



15 Lenaghan Park, Saintfield Road, Belfast, BT8 7JA

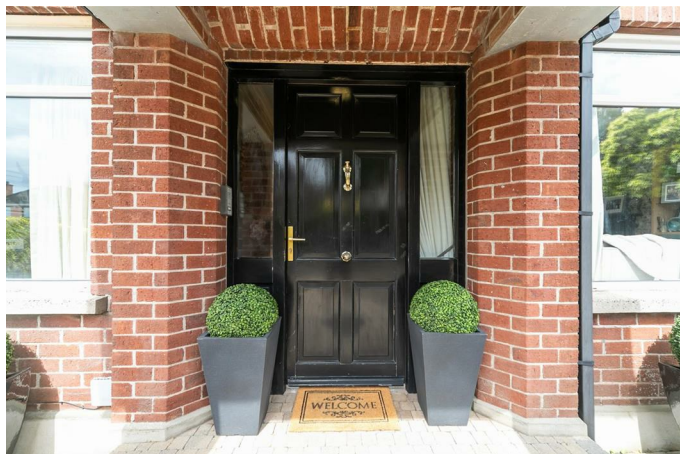
Asking Price £450,000

We are delighted to bring to the open market, this substantially extended and modernised double fronted detached family home that offers well proportioned accommodation comprising of five bedrooms, one with en-suite shower and walk in robe and an additional bathroom with separate shower cubicle on first floor. On the ground floor there is a large lounge / dining room that runs front to back that overlooks the rear patio with another living room to the front. From the deluxe fitted kitchen / casual living there is direct access to the hallway with downstairs w/c and access to the lower floor which enjoys another fantastic living area, suitable for many uses. The property also benefits from oil fired central heating system, double glazing, driveway with sliding gates to off street parking which leads to the attached garage. The property itself is positioned on a generous site with mature gardens and large patio areas to the rear. From the upper floors there are also beautiful city views A short walk provides access to the Saintfield Road with great transport links to most parks of the City and leading schools, both primary and post primary. This home now comprises approximately 2000 sq ft of accommodation having been heavily extended approximately 15 years ago and really needs to be seen to be fully appreciated. An excellent family home, perfect for those with and expanding family with all the hard work already done, it is also in superb order throughout leaving any purchaser with little to do but add furniture.

- Substantial extended detached home
- Three reception rooms
- Deluxe kitchen with casual living area
- Deluxe white bathroom suite with additional shower cubicle
- Oil heating / double glazed windows
- Five good size bedrooms
- Additional lower floor living area
- En-suite and dressing room
- Ground floor w/c
- Off street parking / garage

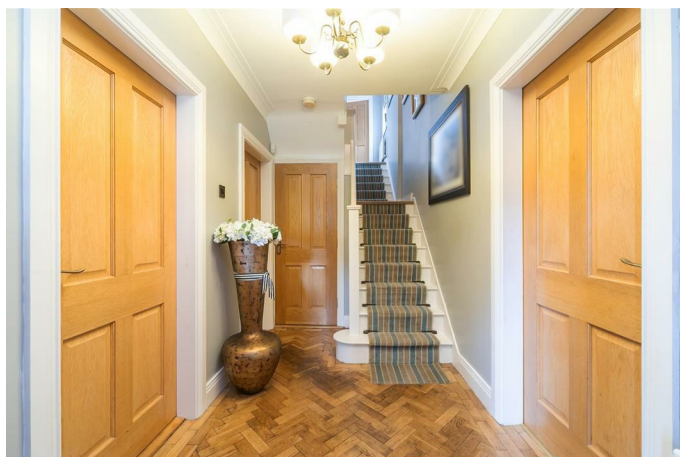
Energy Efficiency Rating		
	Current	Potential
Very energy efficient - lower running costs		
(92-100) A		
(81-91) B		
(69-80) C		
(55-68) D		
(39-54) E		
(21-38) F		
(1-20) G		
Not energy efficient - higher running costs		
Northern Ireland	61	65
EU Directive 2002/91/EC		

The accommodation comprises



Hardwood front door leading to the entrance hall.

Entrance hall



Solid wood herring bone floor, under stairs cloaks.

Lounge 19'4 x 10'6 (5.89m x 3.20m)



Feature cast iron fireplace with raised marble hearth, solid wood flooring. Sliding doors that lead to the dining room.

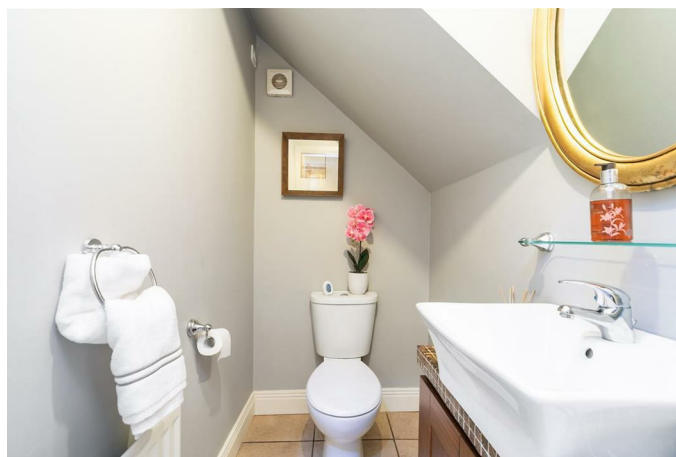
Family room 11'0 x 10'2 (3.35m x 3.10m)



Rear hallway

Tiled floor. Access to the lower floor.

Cloaks 5'8 x 3'8 (1.73m x 1.12m)



Ground floor w/c comprising low flush w/c, wash hand basin with storage below, extractor fan, tiled floor.

Utility room 10'5 x 6'6 (3.18m x 1.98m)



Range of high and low level units, single drain sink unit with mixer taps, works surfaces, part tiled walls, plumbed for washing machine, extractor fan, tiled floor.

Kitchen 16'8" x 15'5" at widest points (5.08m x 4.70m at widest points)



Full range of high and low level units, granite work surfaces, 1 1/4 bowl sink unit with mixer taps, 4 ring hob and under oven, integrated dishwasher and microwave, tiled floor, open to the casual living area. Access to the dining room.

Additional kitchen image



Dining room 14'11 x 10'2 (4.55m x 3.10m)



2 x roof windows, double glazed French doors to the Juliet balcony.

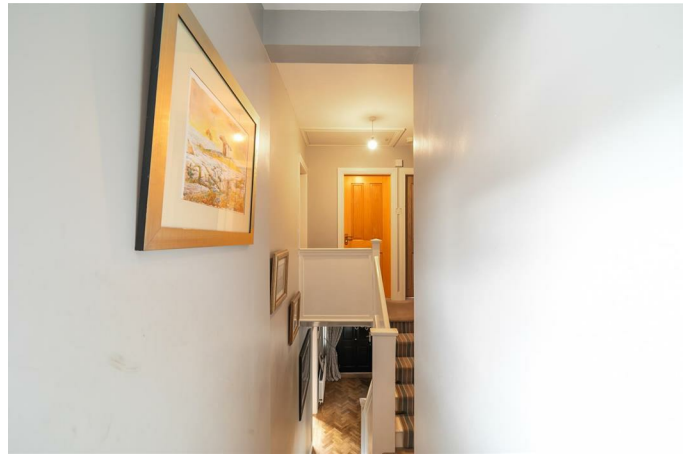
Stairs to the lower floor

Lower living room 18'8 x 16'0 (5.69m x 4.88m)



At widest points.

1st floor



Landing, access to the roof space via a slingsby ladder approach.

Bedroom 1 12'1 x 10'9 (3.68m x 3.28m)



Bedroom 2 15'4 x 10'5 (4.67m x 3.18m)



Additional bathroom image



Bedroom 3 10'6 x 8'6 (3.20m x 2.59m)



Extension bedrooms

Bedroom 4 12'7 x 11'1 (3.84m x 3.38m)



Bathroom 10'5 x 8'3 (3.18m x 2.51m)



Luxury white suite comprising tiled panelled bath, low flush w/c, pedestal wash hand basin, corner shower cubicle with Triton Enrich shower, fully tiled walls, tiled floor, recessed spotlights, hot press.

Dual aspect windows, walk in wardrobe.

En-suite 6'8 x 5'4 (2.03m x 1.63m)



Comprising corner shower cubicle with Mira Event shower, low flush w/c, pedestal wash hand basin, extractor fan, tiled floor.

Bedroom 5 11'0 x 7'8 (3.35m x 2.34m)

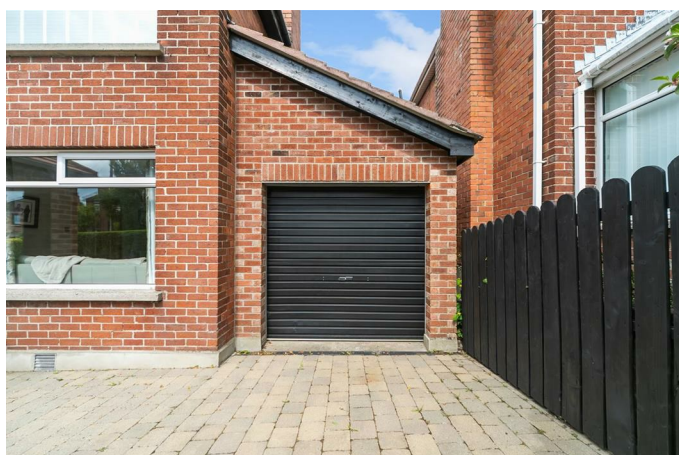


Solid wood flooring, built in robes.

Outside

Sliding gate (which is wired) to the brick paved driveway providing off street parking and access to the attached garage.

Attached garage 16'5 x 9'1 (5.00m x 2.77m)



Roller door. light and power.

Front gardens

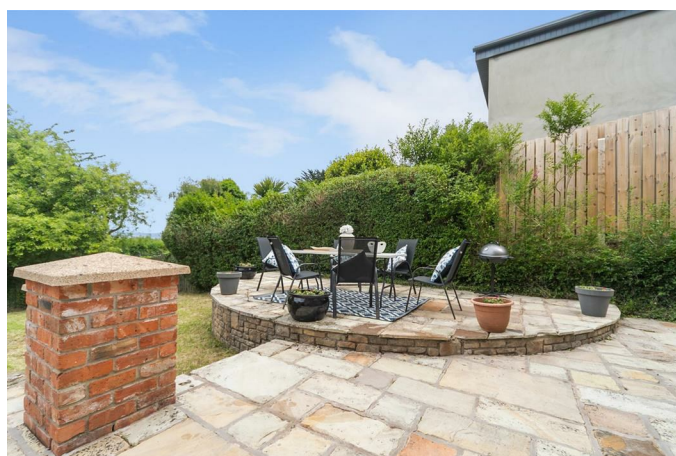
Low maintenance brick paved front gardens with loose stone beds. Access to the side basement room, housing oil fired boiler.

Rear gardens



Good size enclosed rear gardens laid in lawn with additional sandstone patio areas. Range of plants, trees and shrubs,

Additional garden image



Rear elevation

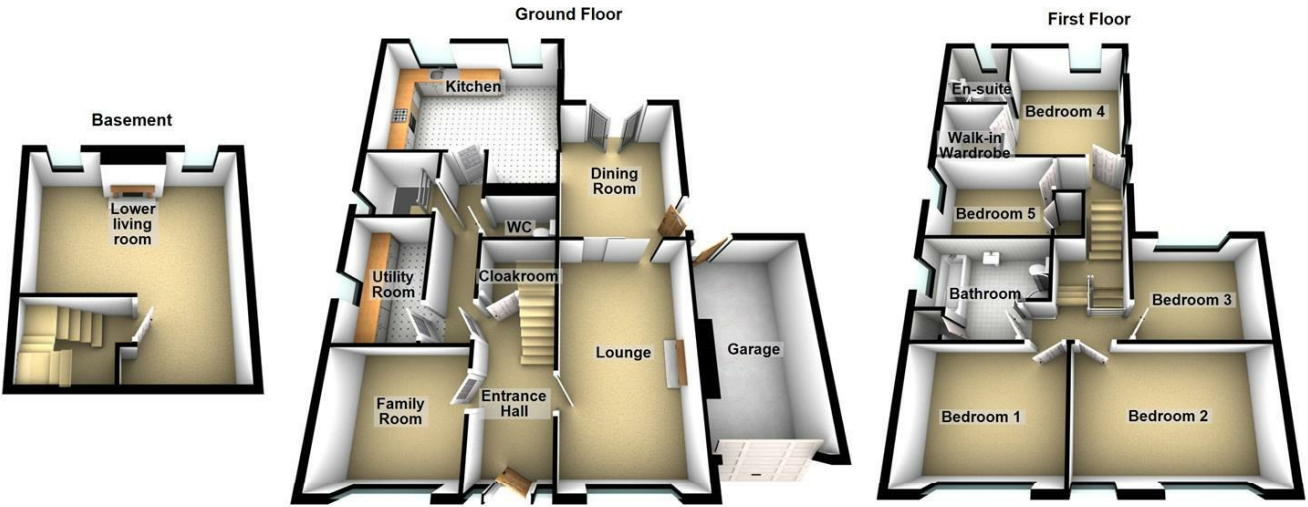


Views

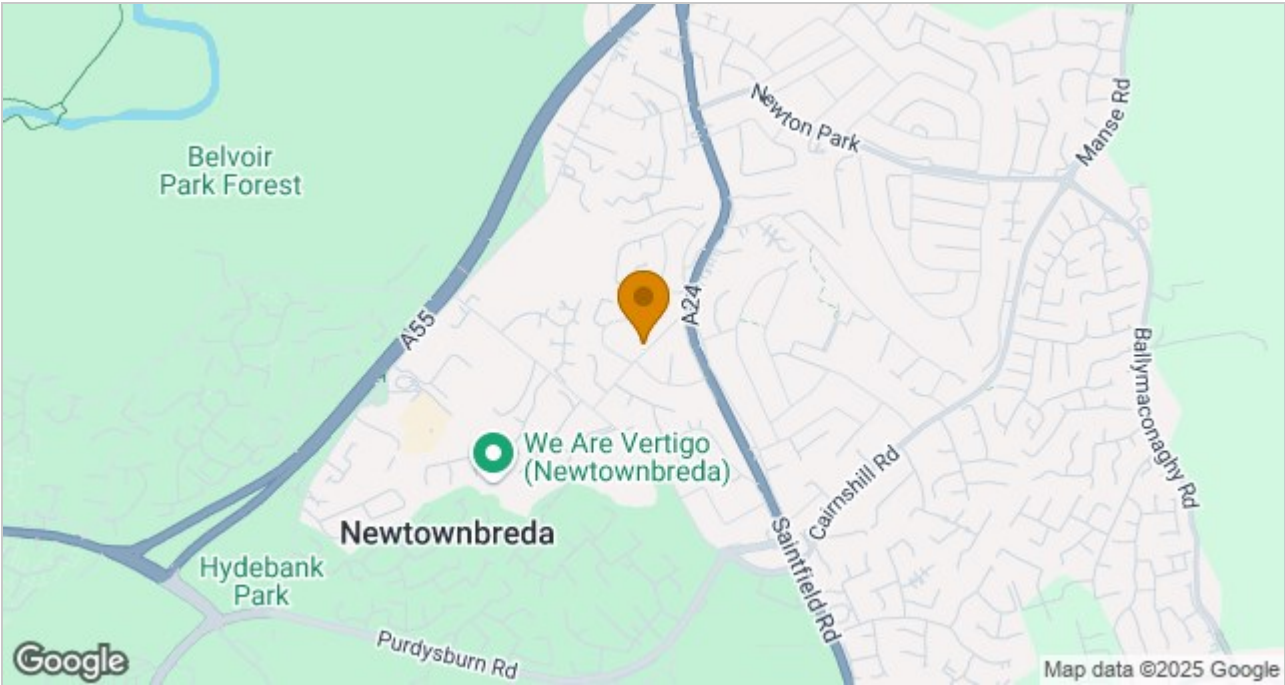


Superb views from the rear.

Floor Plan



Area Map



These particulars, whilst believed to be accurate are set out as a general outline only for guidance and do not constitute any part of an offer or contract. Intending purchasers should not rely on them as statements of representation of fact, but must satisfy themselves by inspection or otherwise as to their accuracy. No person in this firms employment has the authority to make or give any representation or warranty in respect of the property.

ULSTERPROPERTYSALES.CO.UK