

21 Spring Meadows

Warrenpoint, Newry, BT34 3SU

Offers Over £485,000

Welcome to your dream home, perfectly positioned in one of Warrenpoint's most sought-after areas.

This beautifully presented property offers the ideal blend of comfort, style, and functionality—tailor-made for modern family living.

This substantial 5 bedroom property offers spacious interiors that flow seamlessly into a stunning outdoor living area, designed to bring the indoors out.

This home requires no further outlay, allowing you to move in and start enjoying your new lifestyle immediately. Its exclusive nature adds to the appeal, making it a rare find in the market. If you are looking for a family home that combines comfort, style, and a touch of luxury, this property in Spring Meadows is not to be missed.

Spring Meadows is within walking distance of schools, shops and other local amenities. It is 3 miles from the village of Rostrevor, 7 miles from Newry and 1 hour from Belfast & Dublin.

21 Spring Meadows

Warrenpoint, Newry, BT34 3SU



- Exclusive home in a desirable location
- Contemporary Interior design
- Exceptional outdoor living space
- Oil Fired Central heating and double glazing
- Mature gardens with ample Parking
- Detached garage and outdoor office

Entrance Porch
8'3" x 4'4" (2.53 x 1.33)

Entrance Hall
7'8" x 4'4" (2.35 x 1.33)

Sitting Room
12'9" x 17'1" (3.91 x 5.22)

Bedroom 1
12'9" x 11'2" (3.91 x 3.41)

WC
6'5" x 7'10" (1.97 x 2.41)

Kitchen
11'1" x 19'4" (3.39 x 5.91)

Living Room
11'1" x 13'8" (3.39 x 4.18)

Utility
4'6" x 7'10" (1.38 x 2.41)

Stairs leading to first floor

Bedroom 2
12'9" x 13'4" (3.91 x 4.08)

Bathroom
8'9" x 7'10" (2.69 x 2.41)

Bedroom 3
11'3" x 15'4" (3.44 x 4.69)

Bedroom 4
12'9" x 13'2" (3.91 x 4.03)

Bedroom 5/Masterbed
11'3" x 12'1" (3.44 x 3.69)

Ensuite
8'0" x 12'1" (2.44 x 3.69)

Attic

Garage
14'5" x 17'9" (4.40 x 5.43)

Office / Garden room
8'2" x 9'1" (2.49 x 2.79)

External

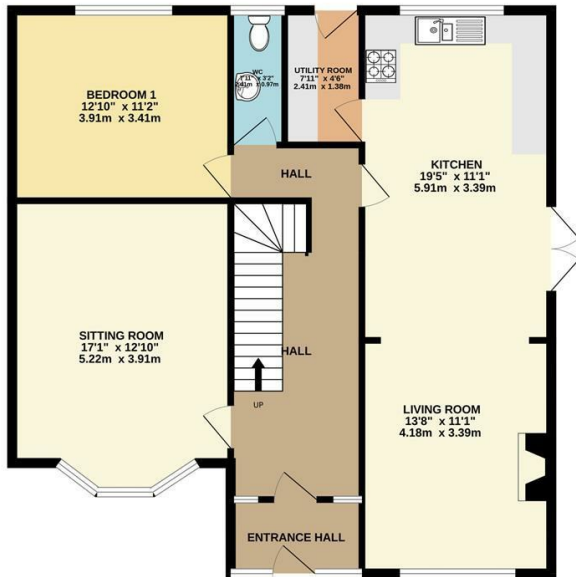


Energy Efficiency Rating		
	Current	Potential
Very energy efficient - lower running costs		
(92 plus) A		
(81-91) B		
(69-80) C		
(55-68) D		
(39-54) E		
(21-38) F		
(1-20) G		
Not energy efficient - higher running costs		
	61	70
Northern Ireland		EU Directive 2002/91/EC

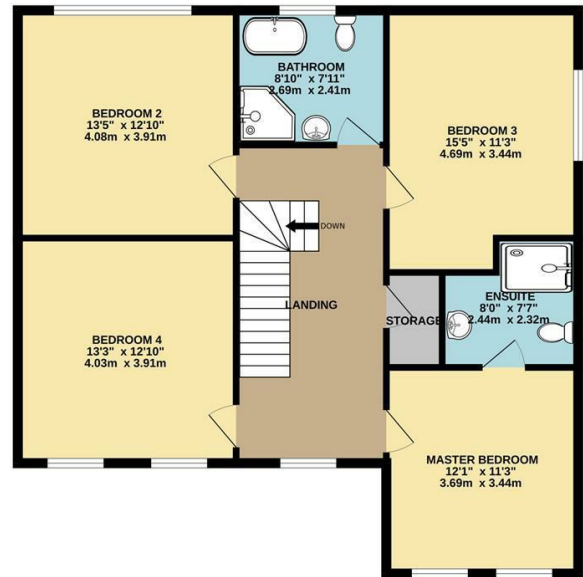


Floor Plan

GROUND FLOOR
967 sq.ft. (89.8 sq.m.) approx.



1ST FLOOR
949 sq.ft. (88.1 sq.m.) approx.



TOTAL FLOOR AREA : 1916 sq.ft. (178.0 sq.m.) approx.

Whilst every attempt has been made to ensure the accuracy of the floorplan contained here, measurements of doors, windows, rooms and any other items are approximate and no responsibility is taken for any error, omission or mis-statement. This plan is for illustrative purposes only and should be used as such by any prospective purchaser. The services, systems and appliances shown have not been tested and no guarantee as to their operability or efficiency can be given.
Made with Metropix ©2025

We look forward to working with you...



We get there together

Our experienced and trusted team have assisted 1000's of people with buying, selling and letting.



We're here for you

Client care is at the very heart of what we do. We will guide and support you every step of the way.



Always close by

With multiple offices and a leading marketing team, we will make sure that you get the very best result.

Newry:
30 Monaghan Street, Newry, Co.Down, BT35 6AA
T: 028 300 50633 E: newry@bradleyeni.com

Warrenpoint:
25 Duke Street, Warrenpoint, Co.Down, BT34 3JY
T: 028 417 73777 E: warrenpoint@bradleyeni.com

Rostrevor:
14 Bridge Street, Rostrevor, Co.Down, BT34 3BG
T: 028 417 39999 E: rostrevor@bradleyeni.com

Belfast:
55-59 Adelaide Street, Belfast, Co.Antrim, BT2 8FE
T: 028 962 09909 E: belfast@bradleyeni.com

These particulars, whilst believed to be accurate are set out as a general outline only for guidance and do not constitute any part of an offer or contract. Intending purchasers should not rely on them as statements of representation of fact, but must satisfy themselves by inspection or otherwise as to their accuracy. No person in this firms employment has the authority to make or give any representation or warranty in respect of the property.