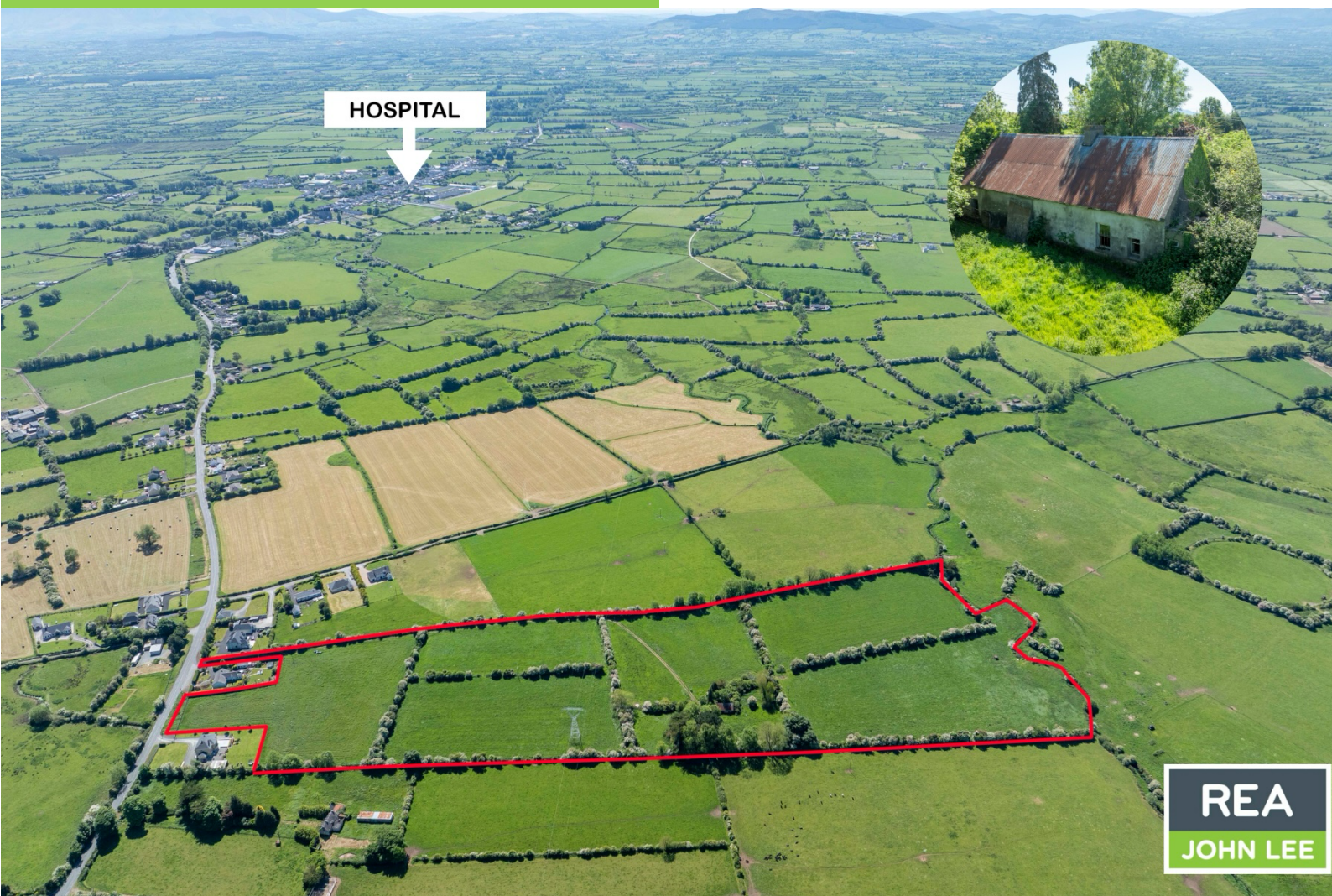


**For Sale**  
By Private Treaty

Guide Price  
**€P.O.A.**

**REA**  
**JOHN LEE**

**PRIME ROADSIDE LANDS**



## **BALLYNAMONA**

HOSPITAL, CO. LIMERICK.

**Top Class Agricultural Holding c. 26 acres  
with Derelict Dwelling thereon.**

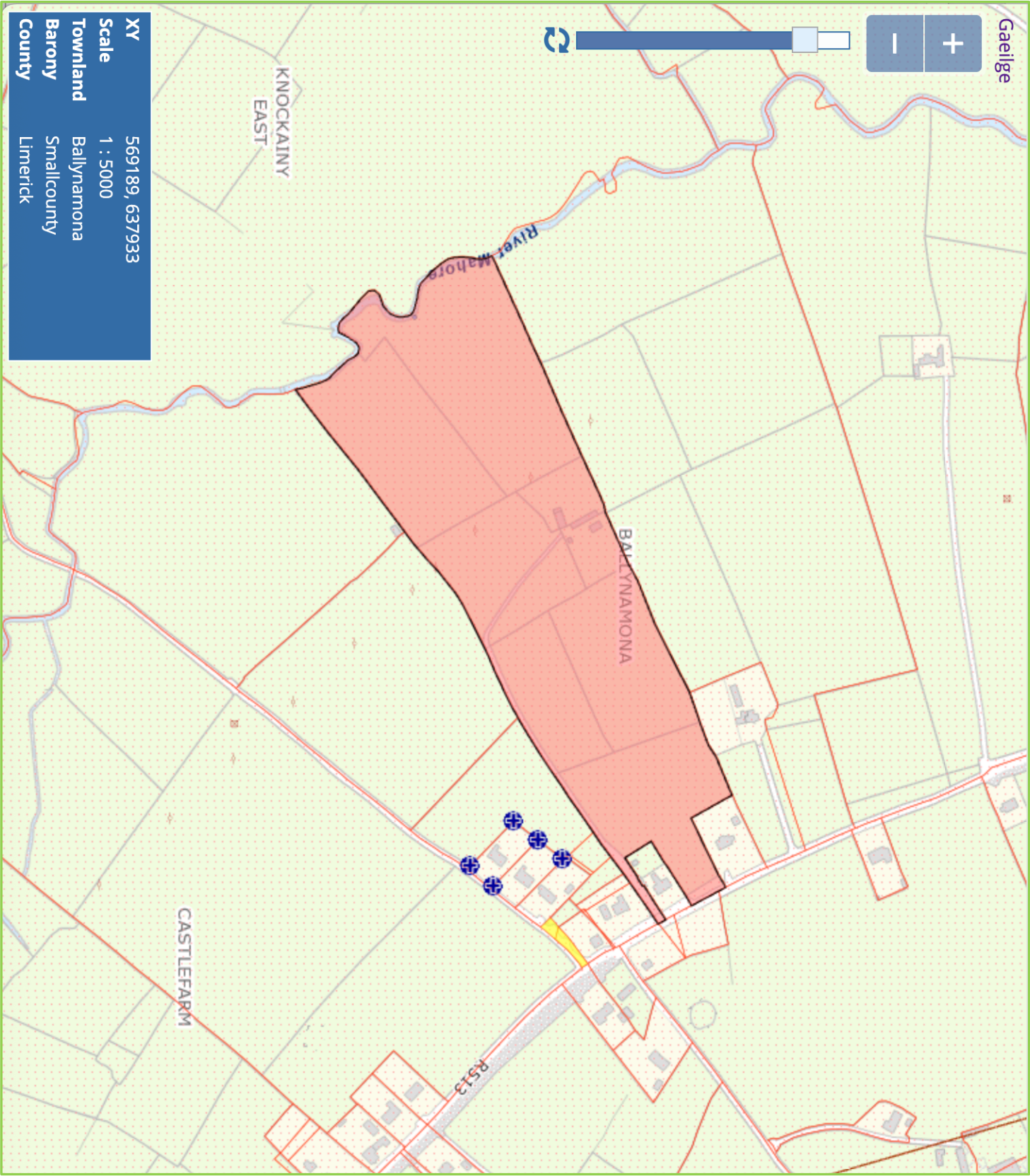


**reajohnlee.ie**

PSRA: 002764



Map:



Not to Scale. For Identification Purposes Only.

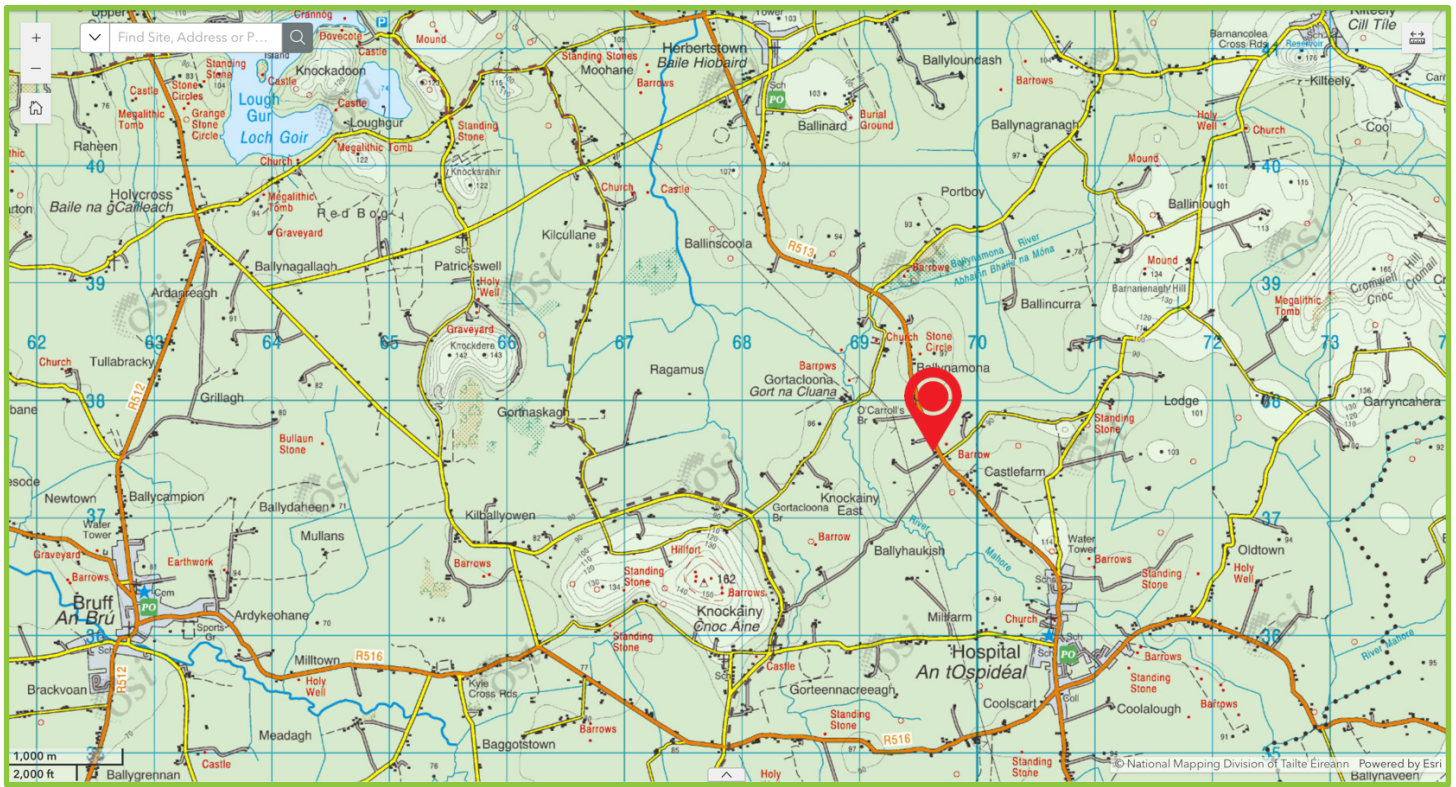
Call 061 378 121



| Aerial Photo:







## The Lands

### c. 26 Acres – Prime Agricultural Lands in Excellent Location!

This superb holding is of a highly productive nature, laid out in easily managed fields with ample road frontage and excellent roadway access. The lands are backing onto the River Mahore to the rear with a derelict residence thereon. They are in excellent condition and consist of some of the very best Golden Vale lands in the area.

☎ 061 378121 or ✉ [info@reajohnlee.ie](mailto:info@reajohnlee.ie) for maps & more info

## Viewing

By prior appointment.

## Directions

The lands are situated on the R513 Limerick road, 2km from Hospital, 4.5km from Herbertstown and 10km from Bruff.

## Price: P.O.A.



## Selling agents

**REA John Lee**  
Main Street,  
Newport,  
Co. Tipperary.  
V94 FC8Y

**T** 061 378121  
**E** [info@reajohnlee.ie](mailto:info@reajohnlee.ie)  
**W** [www.reajohnlee.ie](http://www.reajohnlee.ie)

## Sales agent

**James Lee**  
BSc. Hon's., MRICS MSCSI  
Director

**T** (086) 235 1221  
**E** [james@reajohnlee.ie](mailto:james@reajohnlee.ie)

**CONDITIONS TO BE NOTED:** The terms set out herein are by way of partial summary. Intending purchasers should obtain a copy of the Conditions of Sale where the matters are dealt with comprehensively. Particulars and Conditions of sale are available from the Agents and the Solicitors with carriage of sale. REA John Lee for themselves and for the vendors whose agents they are, give notice that: 1) The particulars are set out in this Brochure and Schedule as a general outline for the guidance of intending purchasers and do not constitute part of an offer or contract. 2) All descriptions, dimensions, references to condition and necessary permissions for the use and occupation and other details are given in good faith and are believed to be correct but any intending purchasers should not rely on them as statements or representations of fact but must satisfy themselves by inspection or otherwise as to the correctness of each of them. 3) No person in the employment of REA John Lee has any authority to make representations or warranty whatsoever in relation to this property. All prices quoted are exclusive of VAT

**reajohnlee.ie**

PSRA: 002764

