



OFFERS AROUND

£250,000

18 Ballymaconnell Road
South
Bangor
BT10 6DQ



pinkertonsni.com

PINKERTONS

Sales, Lettings and Property Management

Charming Three-Bedroom Bungalow with Garden and Garage Near Ballyholme

Located in a highly sought-after area, it's just a short stroll from picturesque Ballyholme, perfect for coastal walks and enjoying local amenities. Inside, the home benefits from oil-fired central heating, creating a warm and cosy

atmosphere throughout the year.

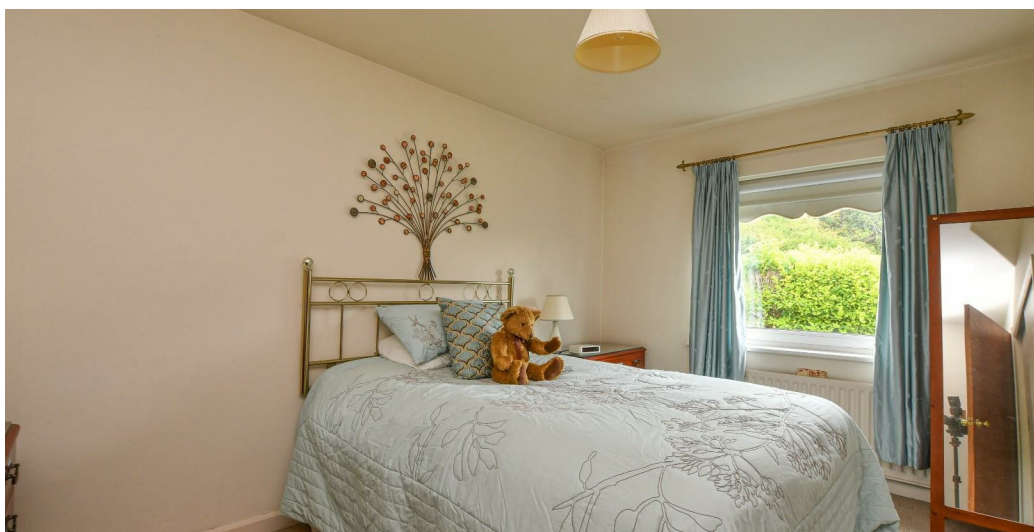
This bungalow is a fantastic opportunity for families or those seeking a peaceful retreat within a vibrant community. With its attractive

features and prime location, it's sure to draw strong interest.

Don't miss your chance to make this lovely home your own.



PROPERTY FEATURES



THIS PROPERTY COMPRISES

Hallway
14'3 x 8'1

Living Room
16' x 11'

Kitchen
19'2 x 9'6

Bathroom
4'9 x 8'4

Bedroom 1
13' x 9'

Storage
1'10 x 5'

Bedroom 2
11'9 x 9'9

Storage
8'9 x 1'10

Bedroom 3
9'9 x 9'

Storage
1'10 x 5'

Garage
17'1 x 10'11

REQUIRED INFO UNDER TRADING STANDARDS GUIDANCE

Tenure - TBC
Ground Rent - TBC
Rates - TBC

Directions
Located off the High Bangor Road

- Located On Ballymacconnell Road South In The Desirable Town Of Bangor
- Charming Three-Bedroom Detached Bungalow
- Immaculate Garden, Perfect For Relaxation Or Entertaining
- Adjoining Garage Offering Ample Storage Or Parking Space
- Long Driveway Offering Ample Parking Spaces For Multiple Vehicles
- Situated In A Highly Sought-After Residential Area
- A Short Distance From Picturesque Ballyholme And Coastal Walks
- Oil-Fired Central Heating And Double Glazed uPVC Windows
- A Rare Opportunity To Own A Well-Located, Attractive Home
- Close To Multiple Schools, Local Amenities, Shops, And Community Facilities

The floor plan shows a house with a central hallway. On the left side, there is a Garage at the bottom, followed by Bedroom 1, Bedroom 2, and Bedroom 3 stacked vertically. A Bathroom is located between Bedroom 2 and Bedroom 3. To the right of the hallway, there is a large Living Room and a Kitchen. The house has multiple windows and doors, including a front door leading into the living room area.




The rating for this property is:

Energy Efficiency Rating		Current	Potential
<p><i>Very energy efficient - lower running costs</i></p> <p>(92 plus) A</p> <p>(81-91) B</p> <p>(69-80) C</p> <p>(55-68) D</p> <p>(39-54) E</p> <p>(21-38) F</p> <p>(1-20) G</p>			
<p><i>Not energy efficient - higher running costs</i></p>			

Northern Ireland

EU Directive
2002/91/EC



* For your information: The UK average rating is 'E50'.



If you need to sell to fund your purchase we are pleased to advise our valuations are free. Contact one of our branches today to find out what your home is worth and why you should sell with Pinkertons.

If you do speak to our team who will be happy to recommend an independent mortgage broker to help you get the mortgage you need for the house you want.

We have the UK's Best Property Management team and Northern Ireland's Best Lettings Department. If you need to let or rent a property you should speak with them first!



info@pinkertonsni.com

PINKERTONS



The above particulars do not constitute any part of an offer or contract. None of the statements contained in this brochure are to be relied on as statements or representations of fact, and any intending purchaser must satisfy himself by inspection or otherwise as to the correctness of these particulars. Neither the vendor, Pinkertons, nor any person employed by Pinkertons has any authority to make, or give any representation or warranty whatsoever in relation to this property. All dimensions are approximate.

