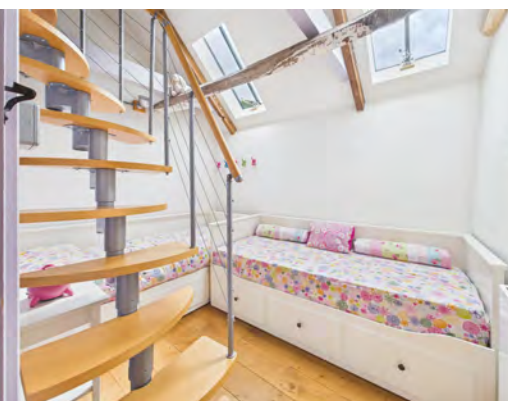




# 2 Brights Cottage South Zeal EX20 2JZ



**Guide Price - £300,000**





# 2 Brights Cottage, South Zeal, EX20 2JZ.

A charming character cottage nestled at the foot of South Zeal, offering two bedrooms, a beautifully landscaped garden, stylish loft office, and seamless blend of period features with contemporary touches...



- Stunning Character Meets Modern Luxury
- Beautifully Restored to High Standard
- Charming Cottage In Idyllic Village
- Open-Plan Living With Character
- Roll-Top Bathroom Retreat Awaits
- Skylit Loft Office Or Studio
- Exposed Beams Add Instant Warmth
- Wisteria-Framed Patio For Entertaining
- Private Garden With Stone Store
- Light-Filled Bedrooms Full Of Charm
- Rustic Elegance In Every Corner
- Council Tax Band - B
- EPC - N/A



Nestled at the foot of the idyllic village of South Zeal, this beautifully finished two-bedroom cottage blends period charm with modern comforts in a way that's both welcoming and wonderfully unique. With its high-specification finish and thoughtfully restored features throughout, this home offers a rare opportunity to enjoy village living in a truly special setting.

The ground floor is a striking open-plan space, where original character details take centre stage. Exposed stonework creates a dramatic backdrop for the generous living area, flowing seamlessly into a rustic-style kitchen that has been tastefully updated with natural materials and warm tones. The layout encourages both relaxed day-to-day living and easy entertaining, with a sense of openness and flow that's rarely found in cottages of this type.

Just off the kitchen area, the ground floor bathroom provides a touch of indulgence. A classic roll-top bath sits elegantly against more exposed stonework, softened by clean white render and complemented by quality fittings, a perfect spot to unwind at the end of the day.

Upstairs, the property offers two well-proportioned bedrooms. The main bedroom is a comfortable double, full of light and character to the front of the home, while the second is currently arranged as a twin room, offering flexibility for guests, children, or additional workspace. Both rooms maintain the cottage's charming feel, with thoughtful décor and finishes that continue the balance of rustic warmth and modern refinement.

A standout feature of this home is the staircase leading up to a converted loft space, currently used as a stylish and practical office area. With exposed beams and a skylight bringing in natural light, it's an ideal retreat for home working, creative projects, or simply enjoying the peaceful surroundings from above.

To the rear, the property boasts a long and very usable garden, beginning with a charming patio area beneath a pergola adorned by mature wisteria, perfect for outdoor dining or morning coffee. The garden continues with a good stretch of lawn, with flower beds running along each side and ends with a stone-built store, ideal for bikes or tools. Next to this is rear gated access leading directly to a nearby car park, offering added convenience without compromising the cottage's private, tranquil feel.



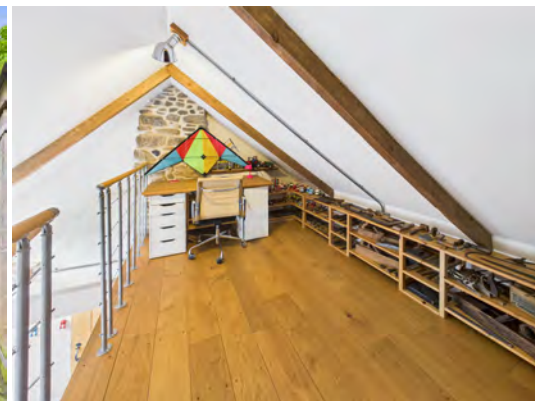
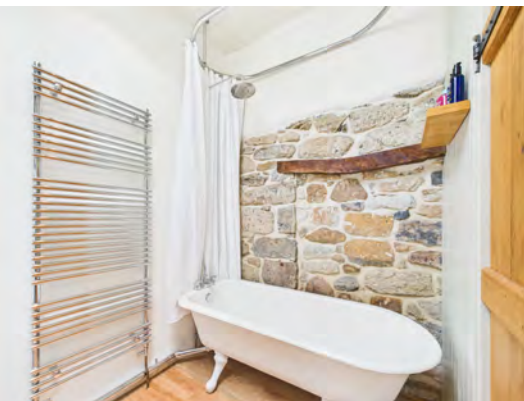


# Changing Lifestyles

The property is situated within the heart of the thriving village of South Zeal, within Dartmoor National Park and a conservation area. The house is within easy walking distance of the primary school, the village hall/pre-school and post office, and two village pubs.

The Oxenham Arms, is a former 12th Century monastery and has hotel accommodation, and the Kings Arms is the social centre of the village. Just a few minutes from the door, you can be on the footpaths up towards Dartmoor's Cosdon Beacon, wild swimming at Shilley Pool and many other fantastic walking trails.

South Zeal is close to Chagford, Throwleigh and Moretonhampstead, home to many independent shops, restaurants, and coffee shops. South Zeal is host to an annual folk festival and many other village events including open gardens and village fayres.



Please do not hesitate to contact  
the team at  
Bond Oxborough Phillips  
Sales & Lettings on  
**01837 500600**  
for more information or to  
arrange an accompanied viewing  
on this property.

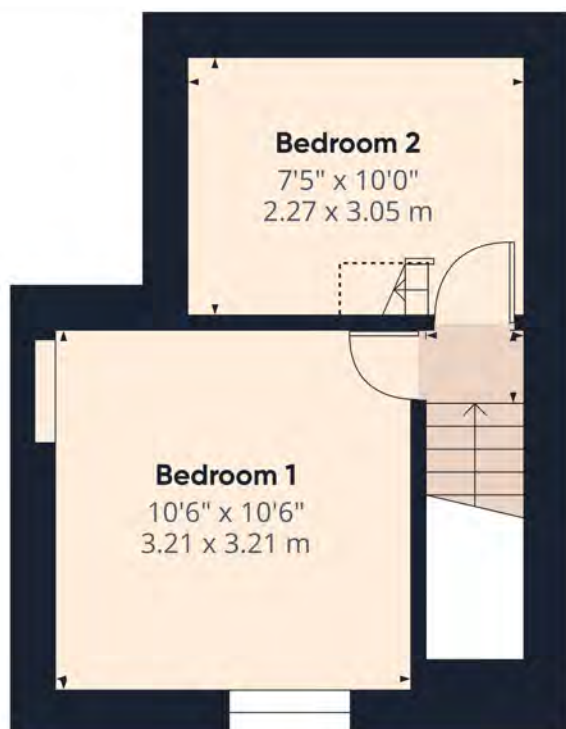
Scan here for  
our Virtual Tour:



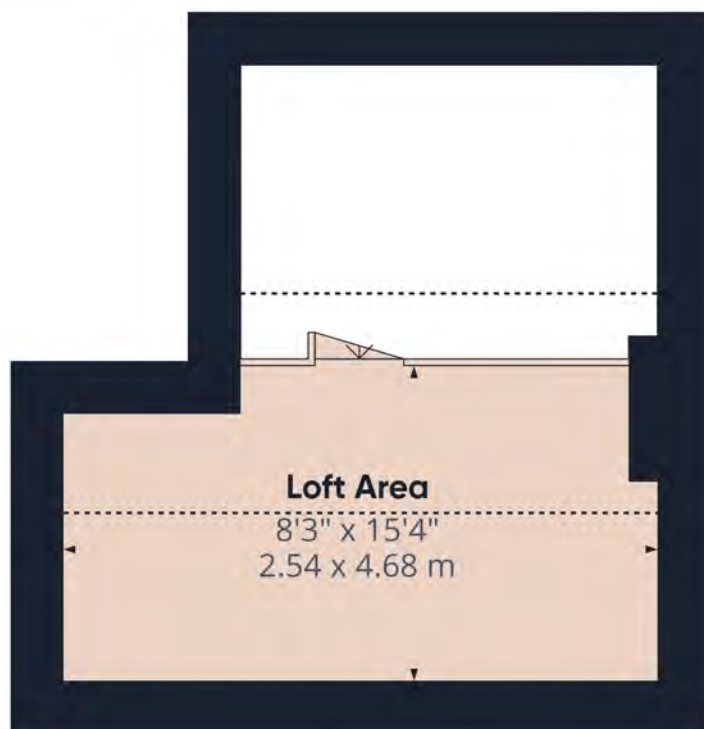
Ground Floor



First Floor



Loft Area



## Have a property to sell or let?

If you are considering selling or letting your home, get in contact with us today on 01837 500600 to speak with one of our expert team who will be able to provide you with a free valuation of your home.

We have the facility to refer purchasers and vendors to conveyancing, mortgage advisors and Surveyors. It is your decision if you choose to deal with any of these companies however should you choose to use them we would receive a referral fee from them for recommending you. We will receive a referral fee between £50 - £300 depending on the company & individual circumstances. We have carefully selected these associates for the quality of their work and customer service levels.

Consumer Protection Regulations: We have not tested any apparatus, equipment, fixtures and fittings or services and so cannot verify that they are in working order or fit for the purpose. References to the Tenure of a Property are based on information supplied by the seller. We have not had sight of the Title Documents. A buyer is advised to obtain verification from their solicitor or surveyor. Floorplans shown are for guidance only and should not be relied upon. Items shown in photographs are NOT included unless specifically mentioned within these details. They may however be able by separate negotiation. You are advised to check the availability of this property before travelling any distance to view. Particulars are produced in good faith to the best of our knowledge and are set out as a general guide only.

### PLEASE NOTE:

Before any sale is formally agreed, we have a legal obligation under the Money Laundering regulations and Terrorist Financing Act 2017 to obtain proof of your identity and of your address, take copies and retain on file for five years and will only be used for this purpose. We carry out this through a secure platform to protect your data. Each purchaser will be required to pay £29.99 upon an offer verbally being agreed to carry out these checks prior to the property being advertised as sale agreed.