



62 The Glade, Newtownabbey, BT36 5NW

£695 Per Month



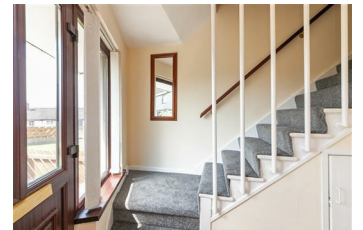
Well presented, two bedroom, mid terrace property with fully enclosed, low maintenance rear garden, conveniently located within the popular Mossley area of Carnmoney, Newtownabbey, in close proximity to local amenities, public transport routes, and main commuter networks.

The property comprises entrance hall, lounge with focal point fireplace, modern fitted kitchen, two well proportioned first floor bedrooms, and bathroom with three piece suite.

Externally, the property enjoys front garden finished in lawn, and fully enclosed low maintenance paved rear garden.

Other attributes include oil fired central heating and PVC double glazing.

Early viewing highly recommended to avoid disappointment.



INVESTORS IN PEOPLE
We invest in people Gold

PRS Property Redress Scheme

Proudly sponsoring



Awards



WE ARE MACMILLAN
CANCER SUPPORT