

Kirkwoods Park, Lisburn, County
Down, BT28

Asking Price: £270,000
Leasehold

 **Reeds Rains**

reedsrains.co.uk

Kirkwoods Park, Lisburn, County Down, BT28
Asking Price: £270,000 Leasehold

Council Tax Band:
EPC Rating: TBC

Stunning detached 4-bedroom house in prime location. This property boasts a spacious garden, off-street parking, and a garage. Ideal for families seeking a peaceful and luxurious living experience. Don't miss this opportunity to make this house your home

Entrance Porch

Entrance Hall
Laminate flooring

Living Room
17'11" x 11'9" (5.46m x 3.58m)
Feature fireplace with open fire inset.

Familty Room
12'1" x 11'6" (3.68m x 3.5m)
Solid wooden flooring, feature stove, granite hearth.

WC
Low level WC, wash hand basin.

Kitchen/ Dining Area
13'5" x 9'5" (4.1m x 2.87m)
Extensive range of modern high and low level units, single drainer stainless steel sink unit, laminate work tops, built-in gas hob and electric oven, open to casual dining area.

Utility Room
9'2" x 5'7" (2.8m x 1.7m)
Range of units, plumbed for washing machine.

Garage
18'5" x 9'2" (5.61m x 2.8m)
Up and over door

Landing

Bedroom 1
13' x 10' (3.96m x 3.05m)

En-suite
Separate shower cubicle with shower unit, low

level WC, wash handbasin,

Bedroom 2
11'7" x 8'5" (3.53m x 2.57m)

Bedroom 3
11'4" x 10' (3.45m x 3.05m)

Bedroom 4
11'7" x 8'5" (3.53m x 2.57m)

Bathroom
White family suite comprising panelled bath, wash handbasin, low level WC, wall and floor tiling.

Driveway / Car Parking
To side.

Enclosed Rear Gardens
Laid in neat lawns, paved patio, outside shed, playing fields to rear.

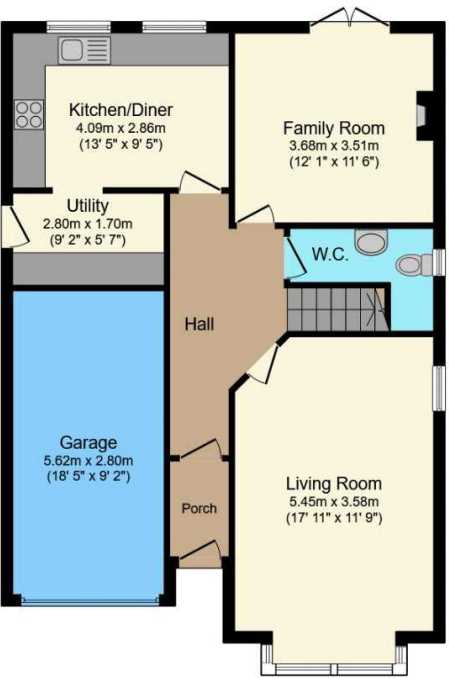
The Reeds Rains branches at 350 Upper Newtownards Road, Ballyhackamore, Belfast, N Ireland BT4 3EX, 18 Main Street, Bangor, Co Down, N Ireland BT20 5AG, Somerset House, 240-242 Ormeau Road, Belfast, Co Antrim, N Ireland BT7 2FZ, 10 High Street, Carrickfergus, Co Antrim, N Ireland BT38 7AF, 8/8A Carnmoney Road, Glengormley, County Antrim, N Ireland BT36 6HN, 14/16 Market Street, Lisburn, County Antrim , N Ireland BT28 1AB and 2 Frances Street, Newtownards, County Down, N Ireland BT23 4JA are operated by Favsko NI Limited which is independently owned and operated under a Licence from Reeds Rains Limited.

All Measurements
All Measurements are Approximate.

Laser Tape Clause
All measurements have been taken using a laser tape measure and therefore, may be subject to a small margin of error.

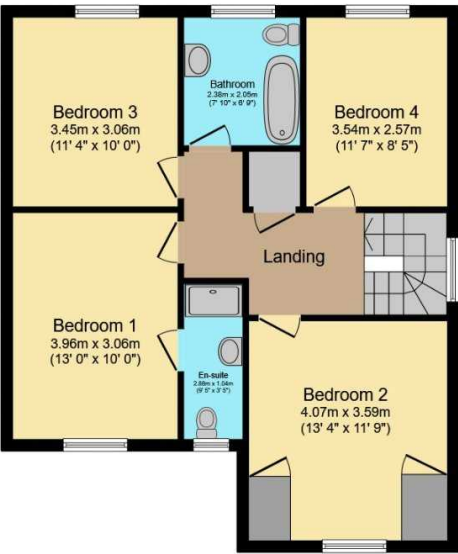
Floorplan Clause
Measurements are approximate. Not to Scale. For illustrative purposes only.

For full EPC please contact the branch.



Ground Floor

Total floor area 153.4 sq.m. (1,651 sq.ft.) approx



First Floor

This floor plan is for illustrative purposes only. It is not drawn to scale. Any measurements, floor areas (including any total floor area), openings and orientation are approximate. No details are guaranteed, they cannot be relied upon for any purpose and they do not form part of any agreement. No liability is taken for any error, omission or misstatement. A party must rely upon its own inspection(s).
Powered by www.focalagent.com

We may refer you to recommended providers of ancillary services such as Conveyancing, Mortgages, Insurance and Surveying. We may receive a referral fee for recommending their services. You are not under any obligation to use the services of the recommended provider, which may also be an associated company of Reeds Rains.

Other important information which you will need to know about this property can be found at reedsrains.co.uk