



Bond
Oxborough
Phillips

Changing Lifestyles

The Chapel

Helstone

PL32 9RL



BRITISH
PROPERTY
AWARDS

2023

★ ★ ★ ★ ★

GOLD WINNER

ESTATE AGENT
IN WADEBRIDGE
& ROCK



Guide Price - £250,000



Changing Lifestyles

01208 814055

The Chapel, Helstone, PL32 9RL



A comfortable and characterful Grade 2 listed home in the heart of the Cornish countryside, perfect for relaxing and exploring the local area.

- Impressive Chapel!
- Family Bathroom
- Unique Build!
- Spacious Open Plan Set Up
- Mezzanine Floor
- Private Outside Space
- Popular Location
- Chain Free
- Council Banding - C
- EPC - E



A truly rare opportunity to acquire this beautifully converted Grade II listed former chapel, originally built in 1826 as Helstone Methodist Church.

Now known simply as The Chapel, this exceptional home is tucked away in the peaceful hamlet of Helstone, just outside Camelford – offering seclusion, character, and excellent access to the A39 and wider Cornish countryside.

Full of warmth and period charm, The Chapel has been thoughtfully reimagined for contemporary living. The entrance opens into a generous hallway, leading to a versatile room to the left – perfect as a study, cloakroom or storage – and to the right, a combined utility room and W.C., equipped with washing machine facilities for everyday convenience.

At the heart of the home is the stunning main chapel space – a striking, open-plan room with soaring ceilings and beautiful natural light. The modern kitchen is set to one side, flowing into flexible living and dining areas ideal for entertaining or quiet evenings in. The master bedroom sits peacefully to the rear with a stylish en suite bathroom for added privacy and comfort.

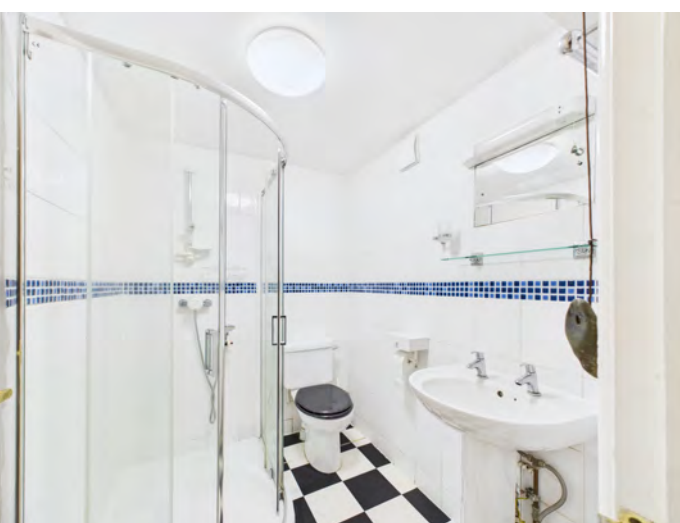
Upstairs, the mezzanine level offers further versatile living space – previously used as a lounge to take full advantage of the beautiful arched west-facing windows, perfect for enjoying sunsets and summer breezes.

A large attic space provides excellent potential for further conversion (subject to necessary permissions), adding exciting scope for future development.

Outside, the property enjoys a sunny, sheltered patio with southerly and westerly aspects – a real sun trap and wind-free spot, ideal for morning coffee or evening drinks. A small, shrub-lined garden enhances privacy while blending beautifully with the building's charm. The original chapel windows were fully conserved inside and out by a skilled joiner around three years ago, preserving their elegance and historical detail.

The community in Helstone is warm, welcoming, and supportive – offering a lovely sense of connection without being overbearing.

Packed with history, personality, and potential, The Chapel is a truly unique home that needs to be seen to be fully appreciated.



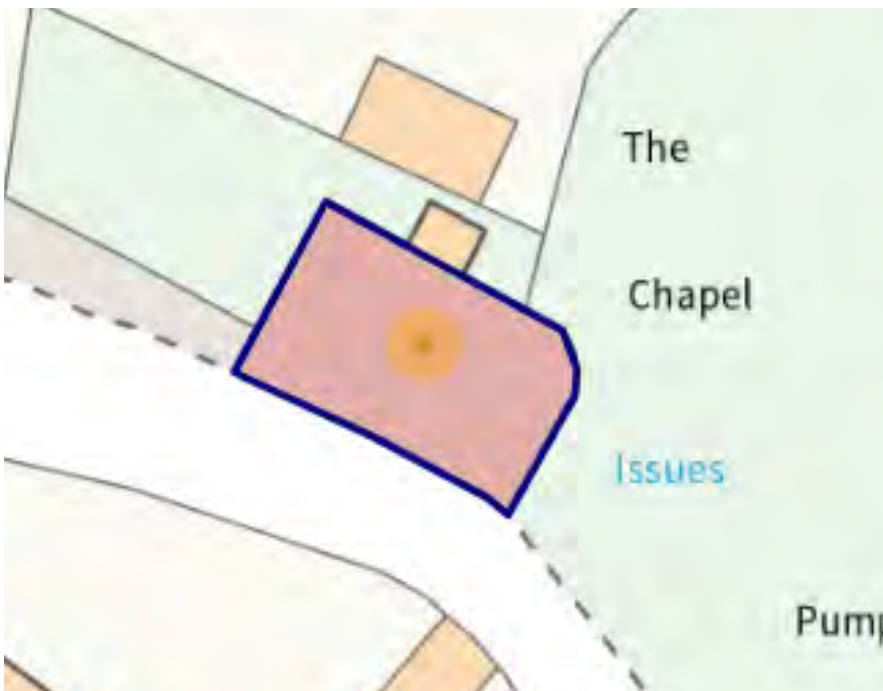
Changing Lifestyles

Helstone is a peaceful and picturesque hamlet nestled in the heart of North Cornwall, offering the perfect balance of rural tranquillity and accessibility. Ideally positioned just a short drive from the bustling town of Camelford, residents benefit from convenient access to local amenities, schools, and services while still enjoying the charm of countryside living.

The hamlet itself is home to a variety of character-filled properties, many of which are of historic interest, contributing to Helstone's unique charm and timeless appeal. Whether you're drawn to stone-built cottages, traditional farmhouses, or homes that tell a story of the area's rich past, Helstone offers a distinct architectural heritage rarely found in modern developments.

The location is superb for lovers of the outdoors, with a wealth of scenic walking routes right on the doorstep, including trails through Bodmin Moor and along the nearby Camel Trail. For beach enthusiasts, Helstone is within easy reach of some of North Cornwall's most celebrated coastal spots. Trebarwith Strand, Polzeath, Daymer Bay, and the iconic surfing destination of Newquay are all easily accessible for day trips and weekend escapes.

Charming villages such as St Teath, Port Isaac, and Tintagel are close by, each offering a mix of local pubs, independent shops, and historical interest. Whether you're looking to explore the coastline, enjoy countryside walks, or relax in a friendly local café, Helstone places you at the centre of it all – a truly idyllic setting for a Cornish lifestyle.



Please do not hesitate to contact
the team at
Bond Oxborough Phillips
Sales & Lettings on
01208 814055
for more information or to
arrange an accompanied viewing
on this property.

Scan here for
our Virtual Tour:





Floor 0



Floor 1



Floor 2

Have a property to sell or let?

If you are considering selling or letting your home, get in contact with us today on 01208 814055 to speak with one of our expert team who will be able to provide you with a free valuation of your home.

We have the facility to refer purchasers and vendors to conveyancing, mortgage advisors and Surveyors. It is your decision if you choose to deal with any of these companies however should you choose to use them we would receive a referral fee from them for recommending you. We will receive a referral fee between £50 - £300 depending on the company & individual circumstances. We have carefully selected these associates for the quality of their work and customer service levels.

Consumer Protection Regulations: We have not tested any apparatus, equipment, fixtures and fittings or services and so cannot verify that they are in working order or fit for the purpose. References to the Tenure of a Property are based on information supplied by the seller. We have not had sight of the Title Documents. A buyer is advised to obtain verification from their solicitor or surveyor. Floorplans shown are for guidance only and should not be relied upon. Items shown in photographs are NOT included unless specifically mentioned within these details. They may however be able by separate negotiation. You are advised to check the availability of this property before travelling any distance to view. Particulars are produced in good faith to the best of our knowledge and are set out as a general guide only.