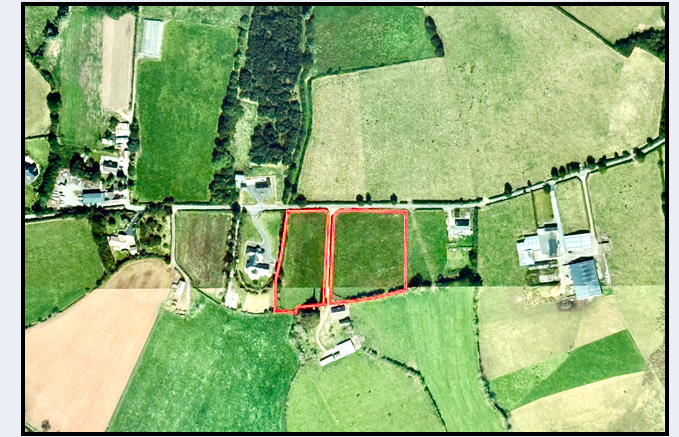


**C. 3 Acres Field Currently In Grass
In A Rural Area Off The Loughgall Road
Suitable For Hobby Farmer Or An Allotment**



**3 Acres Beside 12 Cushenny Road, Portadown, Co Armagh BT62
4JF**

- C. 3 Acres
- Currently in grass
- Ideal for a neighbour
- Or someone with a pony



We have been instructed to offer for sale this field, it extends to approx. 3 acres. The fields are accessible from the Cushenny Road, Portadown and do not currently benefit from Planning Permission. It may be of interest to a neighbouring farmer, or someone seeking land for a horse or sheep.

Please note: there is no access up the laneway between the fields.