



Bond
Oxborough
Phillips

Changing Lifestyles

Dandelion Cottage

Bere Ferrers

PL20 7JL



£1,000 PCM



Changing Lifestyles

01822 600700

Dandelion Cottage, Bere Ferrers, PL20 7JL

A spacious, characterful cottage with fabulous attention to detail throughout, with a rear terrace area adjoining to the outbuilding used as the utility room with potential office space and a front parking space...



- End of Terrace Cottage
- Popular Village Location
- Short Walk to Village Pub
- 2 Double Bedrooms with En-Suites
- 2 Bathrooms & Under Stairs WC
- Off-Road Parking
- Outbuilding/Utility Room
- Charming & Characterful Cottage
- Fabulous Attention to Detail
- No Onward Chain
- Council Tax Band - C
- EPC - C



Dandelion Cottage is a completely renovated 2-bedroom cottage in the heart of Bere Ferrers, on the Bere Peninsula. Not only is it near a vast array of footpaths and bridle paths, but the River Tavy is only a few steps away - perfect for dog owners, hikers or those who enjoy exploring the outdoors!

Meticulously kept and renovated to an extremely high standard to capture modern living with some of the original features still present, the cottage is designed with an upside-down living style. The two double bedrooms downstairs each include en-suite bathrooms; the master bedroom even opens out onto the garden. On the upper level, the contemporary kitchen and dining area flows into a lounge, where a log burner offers a cozy warmth during the cold winter months. Additionally, a window in the eaves affords a beautiful view of the estuary and beyond, while a mezzanine over the kitchen is suitable for a study or crafting space.



Externally, the property features a South facing private courtyard and an outhouse equipped with both electrical and plumbing providing numerous possibilities. A driveway at the side of the cottage provides easy access to the area and off road parking.

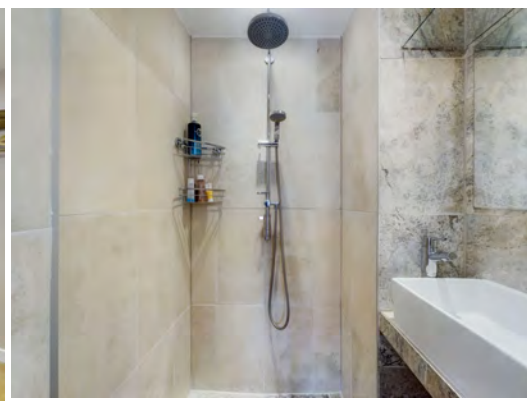
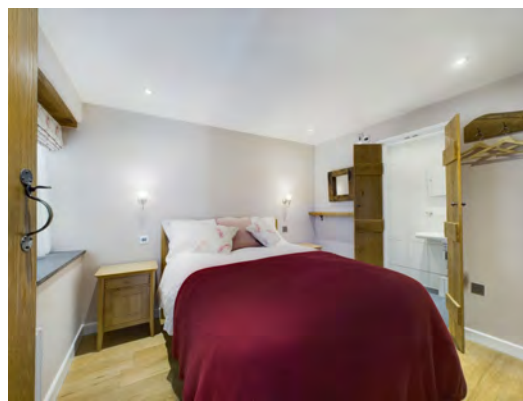
Location:

Changing Lifestyles

Located in the heart of Bere Ferres, on the Bere Peninsula.

Not only is it near a vast array of footpaths and bridle paths, but the River Tavy is only a few steps away - perfect for dog owners, hikers or those who enjoy exploring the outdoors!

There is also the local beloved pub named "The Olde Plough Inn" perfect for taking Family and friends to for some great pub grub.



Please do not hesitate to contact the team at Bond Oxborough Phillips Sales & Lettings on **01822 600700** for more information or to arrange an accompanied viewing on this property.

Scan here for our Virtual Tour:

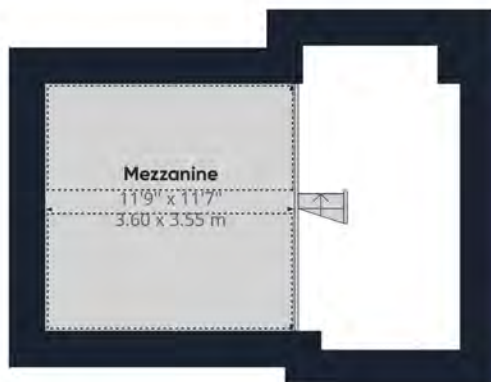




Floor 0 Building 1



Floor 1 Building 1



Have a property to sell or let?

If you are considering selling or letting your home, get in contact with us today on 01822 600700 to speak with one of our expert team who will be able to provide you with a free valuation of your home.

We have the facility to refer purchasers and vendors to conveyancing, mortgage advisors and Surveyors. It is your decision if you choose to deal with any of these companies however should you choose to use them we would receive a referral fee from them for recommending you. We will receive a referral fee between £50 - £300 depending on the company & individual circumstances. We have carefully selected these associates for the quality of their work and customer service levels.

Consumer Protection Regulations: We have not tested any apparatus, equipment, fixtures and fittings or services and so cannot verify that they are in working order or fit for the purpose. References to the Tenure of a Property are based on information supplied by the seller. We have not had sight of the Title Documents. A buyer is advised to obtain verification from their solicitor or surveyor. Floorplans shown are for guidance only and should not be relied upon. Items shown in photographs are NOT included unless specifically mentioned within these details. They may however be able by separate negotiation. You are advised to check the availability of this property before travelling any distance to view. Particulars are produced in good faith to the best of our knowledge and are set out as a general guide only.