

13F BARNIA SQUARE

Rathcoole

Newtownabbey BT37

- Second Floor Apartment
- 2 Bedrooms
- Lounge & Balcony
- Fitted Kitchen
- Modern Shower Room
- PVC Double Glazing
- Superb Views
- Popular Location

Energy Efficiency Rating		
	Current	Potential
Very energy efficient - lower running costs		
(92 plus) A		
(81-91) B		
(69-80) C		
(55-68) D		
(39-54) E		
(21-38) F		
(1-20) G		
Not energy efficient - higher running costs		
Northern Ireland		
		EU Directive 2002/91/EC

Offers Around £64,950

13F Barna Square

Rathcoole, Newtownabbey, BT37 9BY



ACCOMMODATION COMPRISES

SECOND FLOOR

ENTRANCE HALL

Wood laminate flooring,
economy 7 heater, storage
cupboard, access to balcony

BALCONY

Tiled floor

LOUNGE

11'9" x 11'4" (3.58m" x 3.45m")
Economy 7 heater, wood
laminate flooring

KITCHEN

8'3" x 7'11" (2.51m" x 2.41m")
Range of high and low level
units, formica worktop,
stainless steel single drainer
sink unit, built in oven, ceramic
hob, extractor fan, fridge /
freezer space, plumbed for
washing machine, partly tiled
walls

BEDROOM 1

11'0" x 10'11" (3.35m" x 3.33m")
Built in wardrobe and
cupboard, economy 7 heater

BEDROOM 2

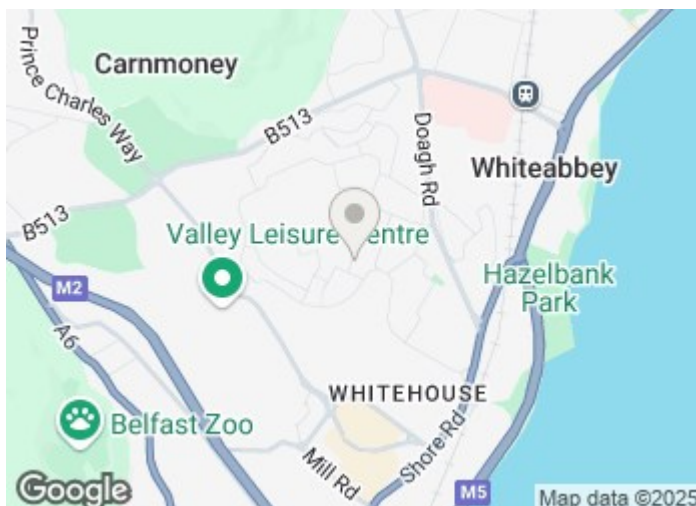
11'6" x 7'11" (3.51m" x 2.41m")
Wood laminate flooring,
economy 7 heater

SHOWER ROOM

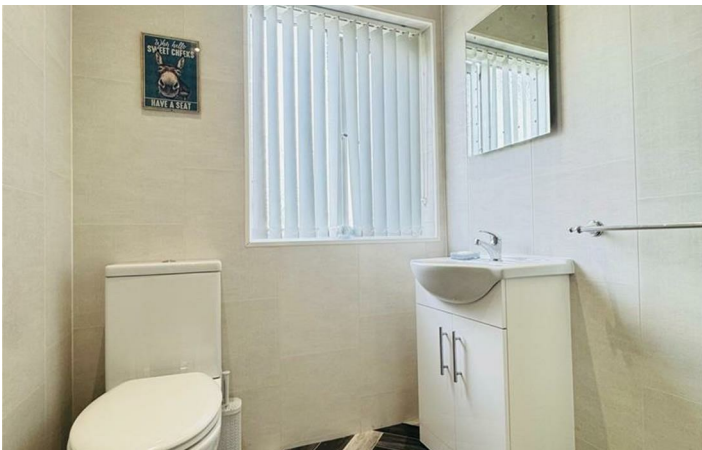
Shower cubicle, electric shower,
vanity unit, low flush wc, fully
pvc panelled walls

OUTSIDE

Communal parking at front
Communal brick paved patio
area and garden in lawn at rear
Your own outhouse



Directions



Floor Plan

These particulars, whilst believed to be accurate are set out as a general outline only for guidance and do not constitute any part of an offer or contract. Intending purchasers should not rely on them as statements of representation of fact, but must satisfy themselves by inspection or otherwise as to their accuracy. No person in this firms employment has the authority to make or give any representation or warranty in respect of the property.

