

For Sale

5 Glengorm Avenue, off Mountsandel Road,
Coleraine, BT52 1TF

Offers Over **£175,000**



Property Overview

- Mid Terrace Townhouse
- 3 Bedrooms, 2 Reception Rooms
- Oil Heating
- uPVC double glazed windows except 2 skylight windows
- Convenient to neighbourhood shops and recreational facilities
- uPVC fascia and guttering
- Rates: The assessment for the year 2024/2025 is £980.40
- EPC Rating - E46

5 Glengorm Avenue, Coleraine, BT52 1TF

Entrance Hall:

With uPVC glass panel front door, tiled floor.



Lounge:

16' 0" X 11' 4" (4.88m X 3.46m) with mahogany surround fireplace, tiled inset and hearth, television point, dado rail, door to:



5 Glengorm Avenue, Coleraine, BT52 1TF



Dining Room:
11' 4" X 11' 2" (3.46m X 3.4m) with patio doors leading to the rear.

5 Glengorm Avenue, Coleraine, BT52 1TF



Kitchen:

11' 2" X 11' 2" (3.4m X 3.4m) with oak eye and low level units including saucepan drawer, pelmet with recess lighting, oven and hob, integrated Prima fridge and dishwasher, housing for microwave, concealed lighting, extractor fan, tiled floor.

Rear Porch:

11' 2" X 4' 8" (3.4m X 1.43m) with tiled floor, boiler, built-in storage, uPVC glass panel rear door. No radiator.

Store:

17' 11" X 9' 5" (5.47m X 2.86 m) (Max) with uPVC glass panel door to the front, strip lighting, power point. No radiator.

5 Glengorm Avenue, Coleraine, BT52 1TF



Shower Room:

Comprising PVC panelled shower enclosure with rainfall and body shower attachment, wash hand basin set in vanity unit, w.c., PVC panelled walls and ceiling, recess lighting, extractor fan, heated towel rail.

5 Glengorm Avenue, Coleraine, BT52 1TF

Landing:

With access to roof space, hot press.

Bedroom 1:

13' 8" X 11' 5" (4.17m X 3.47m) including built-in sliderobes - plus dormer window, skylight window.



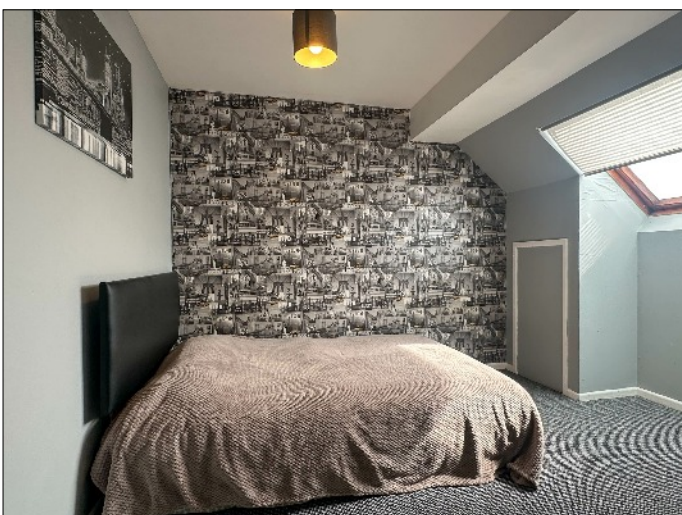
Bedroom 2:

12' 9" X 9' 5" (3.89m X 2.86m) with access to roof space.



Bedroom 3:

9' 5" X 9' 4" (2.88m X 2.85m) plus dormer window, skylight window, access to eaves storage.



5 Glengorm Avenue, Coleraine, BT52 1TF



Bathroom:

Comprising panel bath, telephone hand shower, wash hand basin, w.c., corner shower cubicle with Mira Sprint electric shower fitting, fully tiled walls.

5 Glengorm Avenue, Coleraine, BT52 1TF



EXTERIOR FEATURES:

Garden laid in lawn to the front with screened bed. Concrete driveway. Spacious paved patio area to the rear enclosed by fencing with screened bed. PVC oil tank. Water tap to rear. Outside lights to front and rear. Small decking area outside the patio doors.

5 Glengorm Avenue, Coleraine, BT52 1TF

FLOOR PLANS



Ground Floor



First Floor

For illustrative purposes only. Not to scale.

Whilst every attempt has been made to ensure accuracy of the floor plan all measurements are approximate and no responsibility is taken for any error, omission or measurement.

MISREPRESENTATION CLAUSE: McAfee Sales, give notice to anyone who may read these particulars as follows:

1. The particulars are prepared for the guidance only for prospective purchaser. They are intended to give a fair overall description of the property but are not intended to constitute part of an offer or contract.
2. Any information contained herein (whether in the text, plans or photographs) is given in good faith but should not be relied upon as being a statement of representation or fact.
3. Nothing in these particulars shall be deemed to be a statement that the property is in good condition or otherwise nor that any services or facilities are in good working order.
4. The photographs appearing in these particulars show only certain parts of the property at the time when the photographs were taken. Certain aspects may be changed since the photographs were taken and it should not be assumed that the property remains precisely as displayed in the photographs. Furthermore, no assumptions should be made in respect of parts of the property which are not shown in the photographs.
5. Any areas, measurements or distances referred to herein are approximate only.
6. Where there is reference in the particulars to the fact that alterations have been carried out or that a particular use is made of any part of the property this is not intended to be a statement that any necessary planning, building regulations or other consents have been obtained and these matters must be verified by an intending purchaser.
7. Descriptions of the property are inevitably subjective and the descriptions contained herein are given in good faith as an opinion and not by way of statement of fact.
8. None of the systems or equipment in the property has been tested by McAfee Sales for Year 2000 Compliance and the Purchasers/ Lessees must make their own investigations.


5 Glengorm Avenue, Coleraine, BT52 1TF



Property Location:

On leaving Coleraine along the Mountsandel Road, at the mini roundabout outside the Spar convenience shop turn left onto Glengorm Avenue, continue to the end and Number 5 is situated on the right hand side.

5 Glengorm Avenue, Coleraine, BT52 1TF

Energy Efficiency Rating		
	Current	Potential
Very energy efficient - lower running costs		
A 92 plus		
B 81-91		
C 69-80		
D 55-68		65
E 39-54	46	
F 21-38		
G 1-20		
Not energy efficient - higher running costs		
Northern Ireland		EU Directive 2002/91/EC 
Full EPC available on request		

OFFICE OPENING HOURS

Monday	09:00	-	17:30
Tuesday	09:00	-	17:30
Wednesday	09:00	-	17:30
Thursday	09:00	-	17:30
Friday	09:00	-	17:30
Saturday	09:30	-	12:30
Sunday	Closed		

WEBSITE AND E-MAIL

www.mcafeeproperties.co.uk

coleraine@mcafeeproperties.co.uk

PROPERTY REFERENCE
COL0300 230425/RT

OUR OFFICE LOCATION



mrafee

24 New Row
Coleraine
BT52 1AF



**FOLLOW US
ON FACEBOOK**



Think

FINANCIAL SERVICES

by Clare

- Residential Mortgages
- Re-mortgages
- Self Build Mortgages
- Buy To Let Mortgages
- Holiday Let Mortgages
- Life Cover
- Critical Illness Cover
- Income Protection
- Buildings & Contents Cover
- Landlord Insurance

Contact Clare on 028 7032 8222 / 07739 707 078

Think Financial Services is an Appointed Representative of PRIMIS Mortgage Network. PRIMIS Mortgage Network is a trading name of First Complete Ltd which is authorised and regulated by the Financial Conduct Authority for mortgages, protection insurance and general insurance products.