

33 Rockland Drive, Moneyrea,
Newtownards, BT23

Asking Price: £164,950

 Reeds Rains

reedsrains.co.uk

Rockland Drive, Moneyrea, Newtownards, County Down, BT23

Asking Price: £164,950

EPC Rating: C

DESCRIPTION

An amazing opportunity to purchase a stunning semi-detached home on an impressive corner site in the heart of Moneyreagh.

The home itself offers excellent accommodation throughout, with the ground floor comprising a bright living room with bay fronted window, a recently fitted kitchen with integrated appliances, and a dining space, with patio doors leading to a stunning rear garden. Moving to the first floor, you will find three very well appointed bedrooms and a modern shower room with three piece suite.

On the outside of the property there is a driveway to the front with space for two cars, as well as enclosed front & side gardens which have been laid in lawn. The rear garden is perfect for entertaining and has been beautifully landscaped to include patio, artificial lawn and pebble stone areas.

Early viewing is highly recommended to avoid missing out on all that this amazing home has to offer.

GROUND FLOOR

Entrance Hall

The entrance hall has a laminate floor and PVC front door.

Living Room

A bright living room with a laminate floor and bay window.

Kitchen/Diner

A stunning kitchen with an excellent range of high and low level units, a 1.5 drainer with pull down mixer tap, induction hob, electric oven and extractor hood. The kitchen has been plumbed for a washing machine, and has been beautifully finished with a laminate floor, ceiling spotlighting and partially tiled walls. There is also space for dining and patio doors leading to the rear garden.

FIRST FLOOR

Bedroom One

An excellent double bedroom with built in shelving/wardrobe space, carpet and an outlook to the rear of the property.

Bedroom Two

A double bedroom with carpet and an outlook to the front of the property.

Bedroom Three

A good sized single bedroom currently used as an office space and walk in wardrobe.

Shower Room

A modern shower room with three-piece suite to include a wash hand basin with waterfall mixer tap and vanity unit, a low flush wc, and a shower cubicle with thermo-controlled waterfall shower units. The bathroom walls have been fully tiled and the ceiling has PVC tongue and groove panelling.

OUTSIDE

There is a driveway with space for two cars, beautiful front & side gardens laid in lawn, and a private rear garden which has been landscaped with paved, artificial lawn and pebble stone areas. There is also a large storage room.

The Reeds Rains branches at 350 Upper Newtownards Road, Ballyhackamore, Belfast, N Ireland BT4 3EX, 18 Main Street, Bangor, Co Down, N Ireland BT20 5AG, Somerset House, 240-242 Ormeau

Road, Belfast, Co Antrim, N Ireland BT7 2FZ, 10 High Street, Carrickfergus, Co Antrim, N Ireland BT38 7AF, 8/8A Carrmoney Road, Glengormley, County Antrim, N Ireland BT36 6HN, 14/16 Market Street, Lisburn, County Antrim, N Ireland BT28 1AB and 2 Frances Street, Newtownards, County Down, N Ireland BT23 4JA are operated by Favscos NI Limited which is independently owned and operated under a Licence from Reeds Rains Limited.

All Measurements

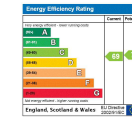
All Measurements are Approximate.

Laser Tape Clause

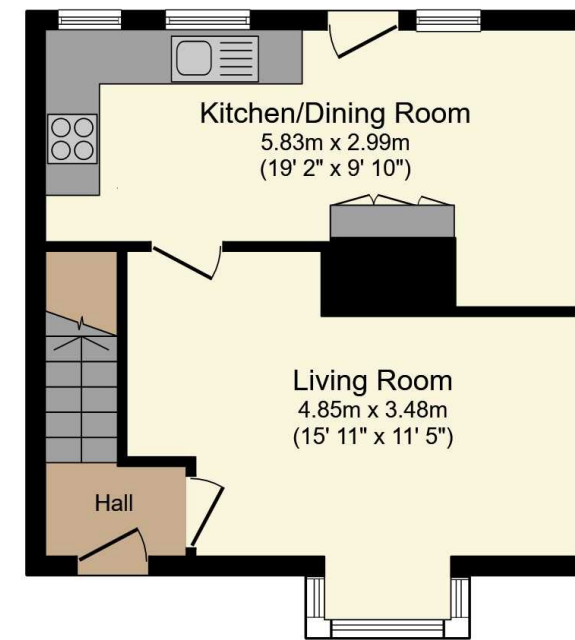
All measurements have been taken using a laser tape measure and therefore, may be subject to a small margin of error.

Floorplan Clause

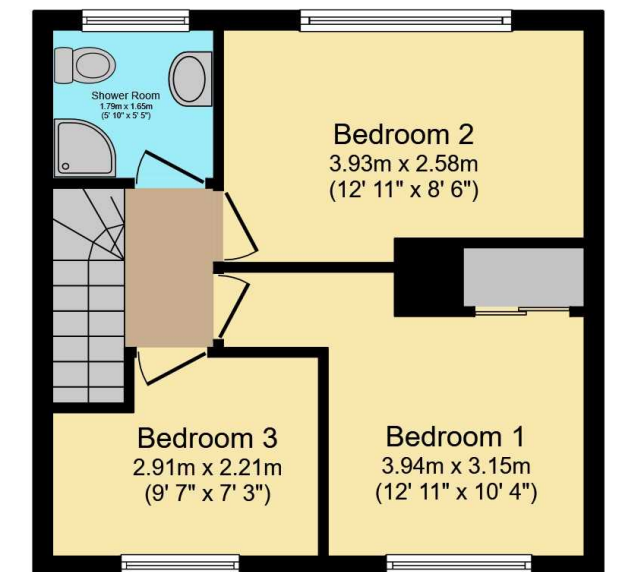
Measurements are approximate. Not to Scale. For illustrative purposes only.



For full EPC please contact the branch.



Ground Floor



First Floor

Total floor area 69.7 m² (750 sq.ft.) approx

This floor plan is for illustrative purposes only. It is not drawn to scale. Any measurements, floor areas (including any total floor area), openings and orientation are approximate. No details are guaranteed, they cannot be relied upon for any purpose and they do not form part of any agreement. No liability is taken for any error, omission or misstatement. A party must rely upon its own inspection(s). Powered by www.focalagent.com