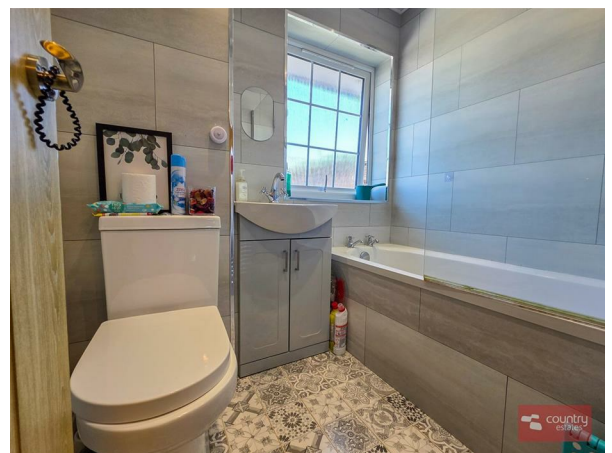


27 Carnroe Drive, Carrickfergus, BT38 8XF



- Superb Mid-Terrace
- Three Well Proportioned Bedrooms
- 1+ Reception
- Modern Shaker Style Fitted Kitchen With Casual Dining Aspect
- White Family Bathroom Suite
- Rear Courtyard Suitable For Family Barbeques
- Beautifully Presented Throughout
- PVC Double Glazed
- Gas Fired Central Heating
- Popular Convenient Location

PRICE Offers Over £114,950

Situated in a popular, convenient location this mid-terraced home enjoys a modern shaker style fitted kitchen with casual dining aspect, a white family first-floor family bathroom suite and three well-proportioned bedrooms. Within close proximity to a host of local amenities, transport options, leisure facilities and schools, this home will ideally suit the first time buyer or young family. An early viewing is highly recommended to avoid disappointment.

>Sales >New Homes >Commercial >Rentals >Mortgages

Antrim
12 Church Street
BT41 4BA
Tel: (028) 9446 6777

Ballyclare
51 Main Street
BT39 9AA
Tel: (028) 9334 0726

Glengormley
9A Ballyclare Road
BT36 5EU
Tel: (028) 9083 0803

ACCOMMODATION

GROUND-FLOOR

ENTRANCE HALL

PVC Double glazed front door with leaded glass inset. Quality laminate flooring.

LOUNGE

14'4" x 14'1" (4.39 x 4.31)

Attractive feature cast iron 'horse shoe' fireplace with tiled hearth & wooden surround. Quality laminate flooring.

MODERN FITTED KITCHEN WITH CASUAL DINING AS

17'5" x 10'2" (5.33 x 3.11)

Shaker style kitchen equipped a range of high and low level fitted units and contrasting worksurfaces. One and a half bowl stainless steel single drainer sink unit with mixer tap. Space for free standing oven with over head extractor fan. Plumbed for washing machine. Plumbed for dishwasher. Space for fridge freezer. Tiled flooring. Recessed spotlights. Complimentary wall tiling. PVC double glazed door to rear garden.

FIRST FLOOR

BEDROOM 1

13'0" x 8'11" (3.96m x 2.72m)

Quality laminate flooring, built-in storage cupboard.

BEDROOM 2

11'1" x 10'3" (3.38 x 3.13)

Quality laminate flooring, built-in storage cupboard.

BEDROOM 3

9'6" x 8'5" (2.92 x 2.59)

MODERN WHITE FAMILY BATHROOM SUITE

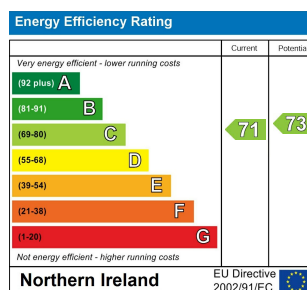
Comprising panelled bath with fixed shower screen & thermostatic drench style shower over bath with hand shower attachment, vanity unit with monobloc tap. Button flush W.C. Quality mosaic style vinyl flooring, complimentary wall panelling, panelled ceiling, recessed spotlights, chrome towel radiator.

OUTSIDE

Neat garden to front laid in lawn with paved walk-ways, screened by perimeter fence.

Fully paved easily maintained courtyard to rear with tiered area suitable for family barbeques, screened by perimeter fence.

IMPORTANT NOTE TO ALL PURCHASERS: We have not tested any of the systems or appliances at this property.



Country Estates (N.I.) Ltd. for themselves and the Vendors of this property whose agents are, give notice that:

These particulars do not constitute any part of an offer or contract

All statements contained in these particulars as to this property are made without responsibility on the part of Country Estates (N.I.) Ltd. or the vendor

None of the statements contained in these particulars as to this property are to be relied on as statements or representations of fact

Any intending purchaser must satisfy himself or otherwise as to the correctness of the statement contained in these particulars

The vendor does not make or give, and neither Country Estates (N.I.) Ltd. nor any person in their employment, has any authority to make or give representation or warranty whatever in relation to this property.