

Tim Martin
— .co.uk



23 Downpatrick Road
Crossgar
BT30 9EQ

Offers Around
£299,950

www.timmartin.co.uk
Telephone 028 97 568300

SUMMARY

An exceptional detached cottage situated on a private site, ideally located a short walk to the centre of the village, the open countryside and only 20 minutes from Belfast.

Internally the vendors have created a delightful contemporary open plan interior finish to an exceptionally high standard. The lounge, dining area and luxurious kitchen have features ranging from the Stovax wood burning stove to the 'Function Design' integrated kitchen which are complimented by an excellent range of integrated appliances. Three double bedrooms, contemporary fitted shower room and first floor fourth bedroom/study with plumbing for an en suite, provide ample space for the growing family and those wishing to work from home.

Externally, a gravelled driveway provides ample parking for several cars. The enclosed private south facing garden to the rear have been beautifully landscaped with a separate party house/garage and adjoining store creating the ideal entertaining area to make this the most attractive setting for this wonderfully curated home.

Crossgar village hosts a selection of amenities within walking distance including supermarket, eateries, churches, dentist and off licence. There are a number of schools in the immediate area with a good bus service providing transport to schools in Downpatrick, Saintfield and Greater Belfast area.

This is a home with style, good taste and sheer luxury and making country living at its finest, which seldom comes to the market.

FEATURES

- Exceptional Detached Cottage Situated on A Private Site and Within Walking Distance to Crossgar Village
- Three Excellent Sized Bedrooms on The Ground Floor and One on The First Floor (With Plumbing Available for An En Suite)
- Beautifully Appointed Lounge with Stovax Wood Burning Stove
- Function Design Luxurious Fitted Kitchen with An Excellent Range of Integrated Appliances Open Through to The Dining Area
- Shower Room with A Contemporary Fitted White Suite
- Gas Fired Central Heating and Double Glazing
- Spacious Driveway to The Front and Side Providing Excellent Parking for Several Cars
- Enclosed Rear Gardens Which Have Been Beautifully Landscaped with Party Room and Store
- Close To Many Amenities Within Crossgar and Local Schools
- Excellent Road Network and Public Transport Links to Downpatrick and Belfast

Entrance Hall

Italian porcelain tiled floor; glazed uPVC entrance door.

Lounge 17'4 x 11'1 (5.28m x 3.38m)

Italian porcelain flagged floor; Stovax wood burning stove; tv aerial connection point.

Kitchen / Dining Area 17'6 x 11'6 (5.33m x 3.51m)

L shaped; Function Design Ltd contemporary fitted kitchen comprising, 1810 recessed sink with Quooker mixer tap; extensive range of eye and floor level cupboards and drawers; integrated Bosch electric oven and matching combi oven; ceramic induction hob with charcoal air pressuriser; integrated Zenith fridge/freezer; Hotpoint dishwasher; illuminated display shelves; formica quartz worktop; vertical wall mounted radiator; LED spot lighting; glazed patio door to rear garden.

Dining Room 10'6 x 9'9 (3.20m x 2.97m)

Imported Italian porcelain flagged floor; open plan to kitchen and lounge.

Wet Room / Shower Room 8'3 x 7'3 (2.51m x 2.21m)

Shower cubicle with thermostatically controlled shower unit with adjustable and rain head shower heads; glass shower panel; recessed accessory shelves; floating vanity unit with fitted porcelain bowl; wall mounted mixer taps; wall mounted wc with concealed cistern; italian porcelain flagged floor; towel radiator; extractor fan.

Bedroom 1 11'3 x 10'5 (3.43m x 3.18m)

Maximum Measurements

Porcelain flagged floor.

Bedroom 2 11'10 x 10'5 (3.61m x 3.18m)

Built-in cupboard with Ideal gas fired boiler; porcelain flagged floor.

Bedroom 3 11'2 x 7'5 (3.40m x 2.26m)

Built-in wardrobe; porcelain flagged floor.

Stairs To First Floor Landing

Attic Storage 12'0 x 8'5 (3.66m x 2.57m)

Access to under eaves storage.

Bedroom 4 16'4 x 9'11 (4.98m x 3.02m)

Built-in storage cupboard; plumbing available for en suite shower room (if desired).

Outside

A private gated entrance with decorative Donegal Gold gravel drive providing ample parking for several cars; fingerprint entry point at pedestrian gate.

Gardens

Enclosed rear gardens laid out in lawn; decorative gravelled area; well stocked flowerbeds.

Party Room 15'4 x 12'5 (4.67m x 3.78m)

Power points (previously was a garage).

Store 15'4 x 8'0 (4.67m x 2.44m)

Lay 2 Spa Hot Tub

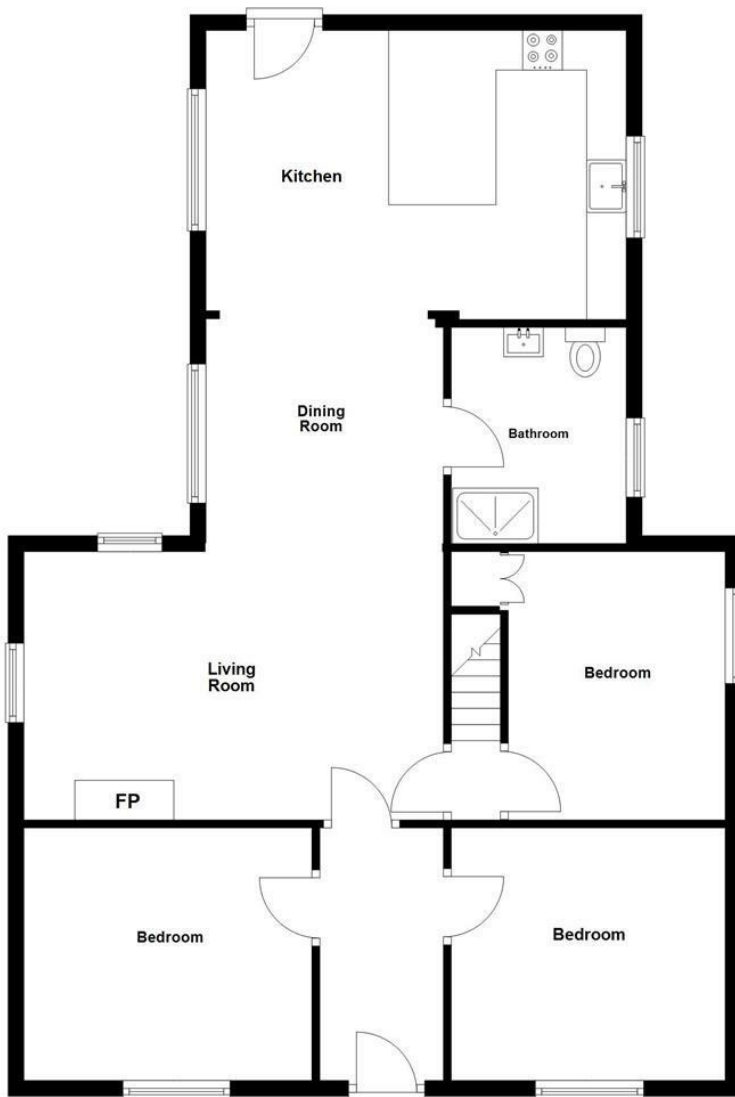
Tenure
Freehold

Capital / Rateable Value

£125,000. Rates Payable = £1,214.75 per annum (approximately).

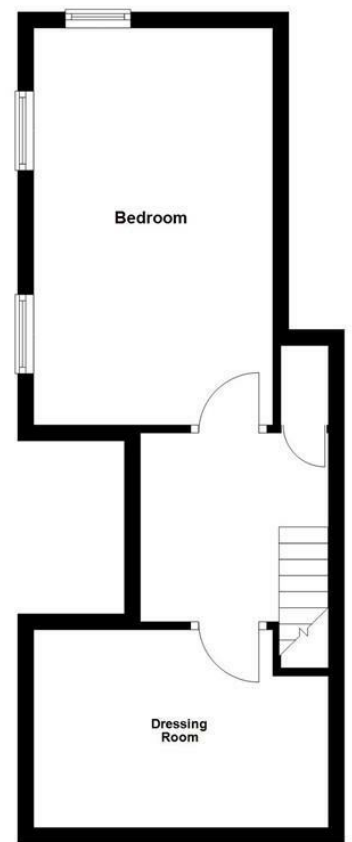
Ground Floor

Approx. 92.6 sq. metres (997.0 sq. feet)



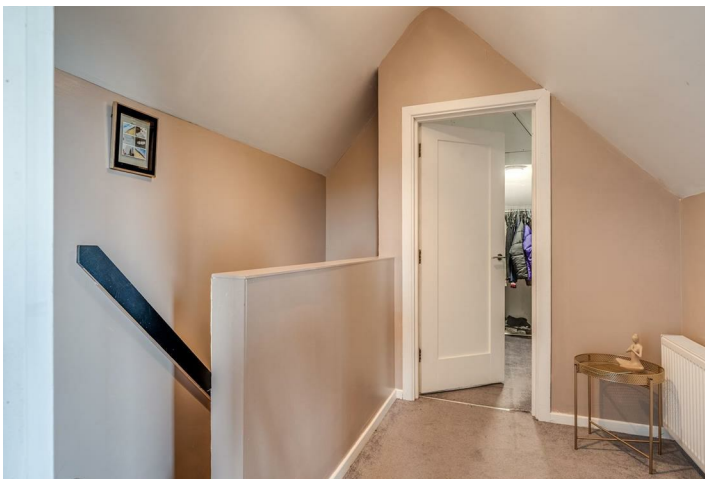
First Floor

Approx. 32.4 sq. metres (348.9 sq. feet)

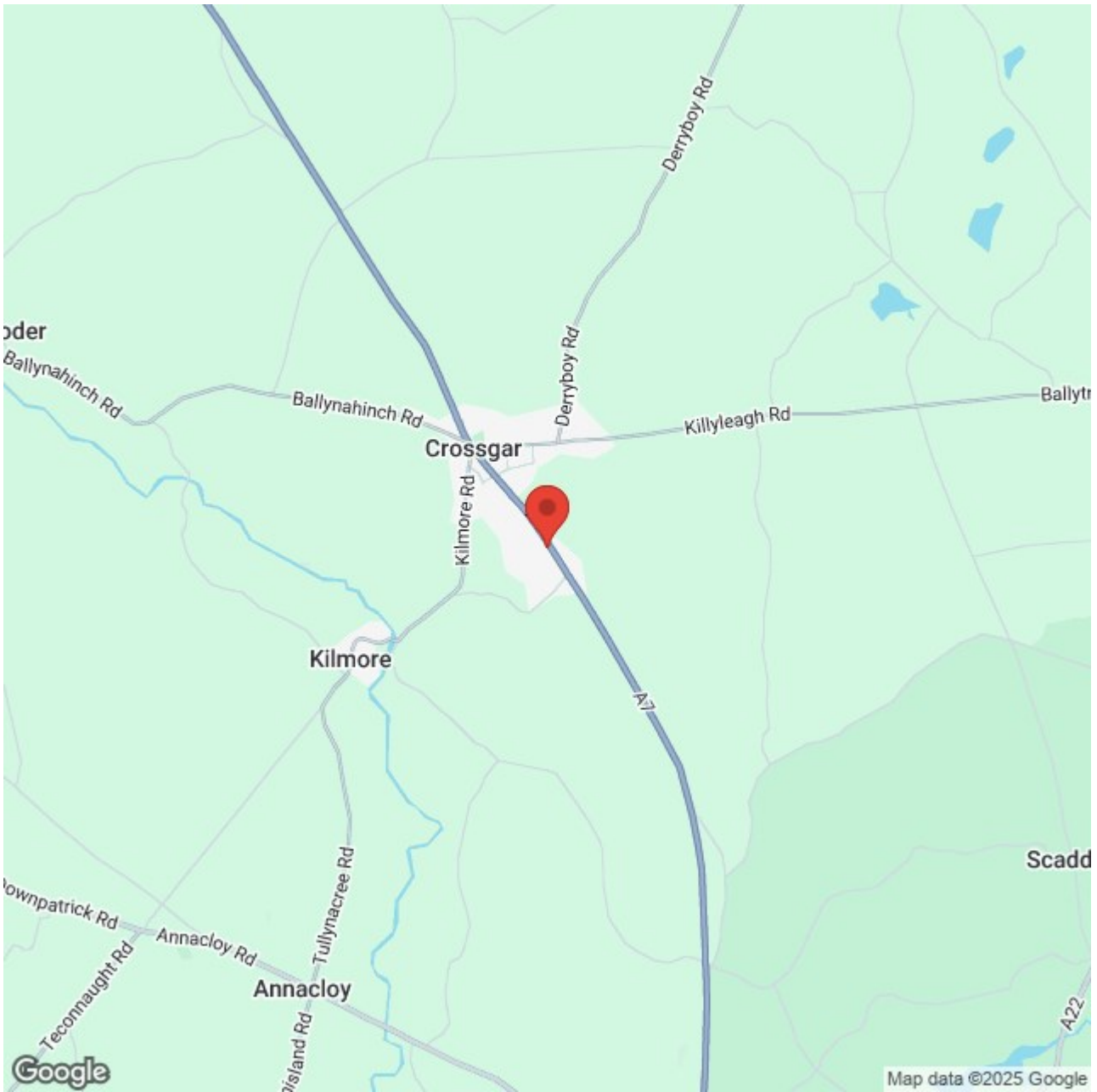


Total area: approx. 125.0 sq. metres (1345.8 sq. feet)









Energy Efficiency Rating		Current	Potential
Very energy efficient - lower running costs			
(92 plus) A			
(81-91) B			
(69-80) C			
(55-68) D			
(39-54) E			
(21-38) F			
(1-20) G			
Not energy efficient - higher running costs			
		65	72

Saintfield
 1B Main Street, Saintfield, BT24 7AA
 T 028 97 568300

Comber
 27 Castle Street, Comber, BT23 5DY
 T 028 91 8789596

Tim Martin & Company for themselves and for the vendors of this property have endeavoured to prepare these sales details as accurate and reliable as possible for the guidance of intending purchasers or lessees. These particulars are given for general guidance only and do not constitute any part of an offer or contract. The seller and us as agents, do not make any representation or give any warranty in relation to the property. We would recommend that all information contained in this brochure about the property be verified by yourself or professional advisors. Services, fittings and equipment referred to in the sales details have not been tested (unless otherwise stated) and no warranty will be given as to their condition. All measurements contained within this brochure are approximate. Please contact us prior to viewing the property. If there is any point of particular importance to you we would be pleased to provide additional information or make further enquiries. We will also confirm that the property remains available. This is particularly important if you are contemplating travelling some distance to view the property.