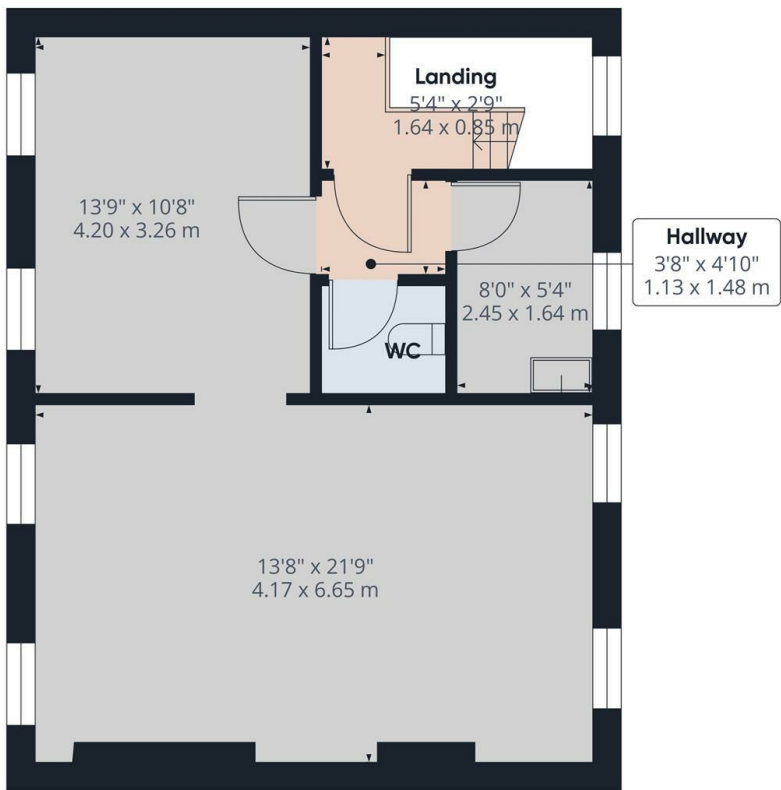




## 115-117 Bridge Street, Portadown, Craigavon, County Armagh, Offers In Excess Of £175,000

- Prominent three-storey building on the outskirts of Portadown town centre
- Desirable location with optimum exposure
- Well-presented throughout
- Approximately 1900 Sq Foot over three floors
- Units currently occupied with sitting tenants

**Hannath**

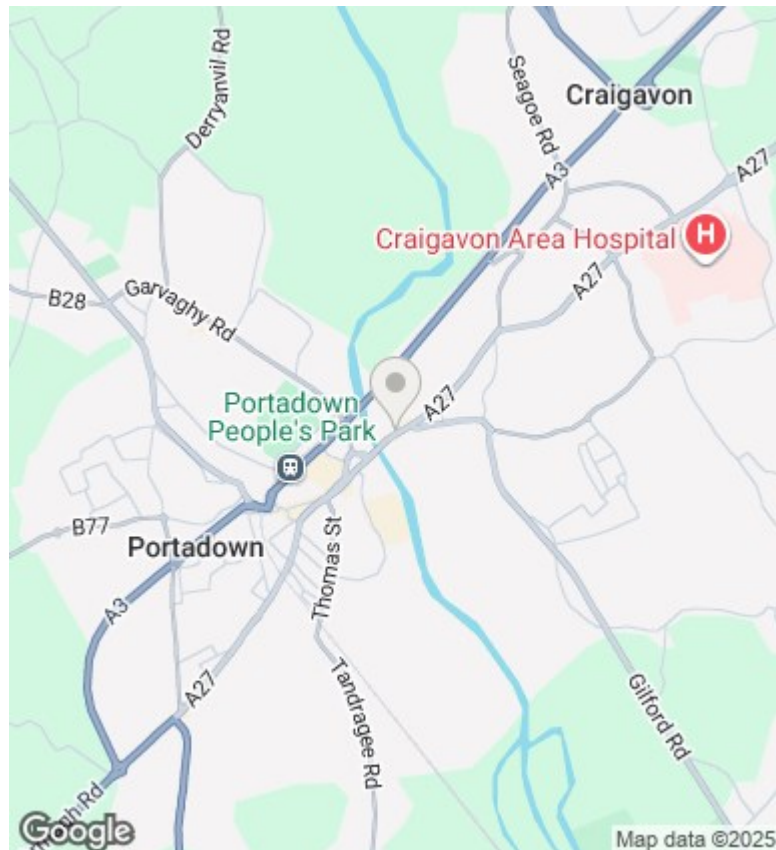


Approximate total area<sup>(1)</sup>  
550.04 ft<sup>2</sup>  
51.1 m<sup>2</sup>

(1) Excluding balconies and terraces

While every attempt has been made to ensure accuracy, all measurements are approximate, not to scale. This floor plan is for illustrative purposes only. Calculations are based on RICS IPMS 3C standard.

GIRAFFE360



## Directions

## Viewings

Viewings by arrangement only. Call 02838 399911 to make an appointment.

## Council Tax Band

Northern Ireland

## EPC Rating:

Energy Efficiency Rating		
	Current	Potential
Very energy efficient - lower running costs		
(92 plus) A		
(81-91) B		
(69-80) C		
(55-68) D		
(39-54) E		
(21-38) F		
(1-20) G		
Not energy efficient - higher running costs		
Northern Ireland	EU Directive 2002/91/EC	