



10 HEDGELEA ROAD

Old Carrick Road
Newtownabbey BT37

- Mid Townhouse
- 3 Beds Master Ensuite
- Lounge
- Fitted Kitchen / Diner
- White Bathroom Suite
- PVC Double Glazing
- Gas Heating
- Popular Location

Energy Efficiency Rating		Current	Potential
Very energy efficient - lower running costs			
(92 plus) A			
(81-91) B			
(69-80) C			
(55-68) D			
(39-54) E			
(21-38) F			
(1-20) G			
Not energy efficient - higher running costs			
Northern Ireland		EU Directive 2002/91/EC	

Price £170,000

10 Hedgelea Road

Old Carrick Road, Newtownabbey, BT37 0WL



ACCOMMODATION COMPRISES

GROUND FLOOR

ENTRANCE HALL

Tiled floor, radiator

LOUNGE

15'11" x 13'6" at widest (4.85m" x 4.11m" at widest)

Inset gas fire, solid oak flooring, radiator, under stairs storage

KITCHEN / DINER

17'0" x 9'9" (5.18m" x 2.97m")

Range of high and low level units, formica worktop, basin 1/2 stainless steel sink unit, built in stainless steel double oven, stainless steel gas hob, stainless steel extractor fan, fridge / freezer space, plumbed for washing machine, gas boiler. tiled floor, radiator, pvc double glazed double doors to rear

FIRST FLOOR

LANDING

Hotpress

BEDROOM 2

12'3" x 9'10" at widest (3.73m" x 3.00m" at widest)

Wood laminate flooring, radiator, walk in wardrobe

BEDROOM 3

9'9" x 9'9" at widest (2.97m" x 2.97m" at widest)

Radiator

BATHROOM

White suite comprising bath, shower attachment, low flush wc, glass wash hand basin, tiled floor, radiator

SECOND FLOOR

LANDING

Access to roofspace

BEDROOM 1

20'9" x 13'4" at widest (6.32m" x 4.06m" at widest)

Radiator

ENSUITE

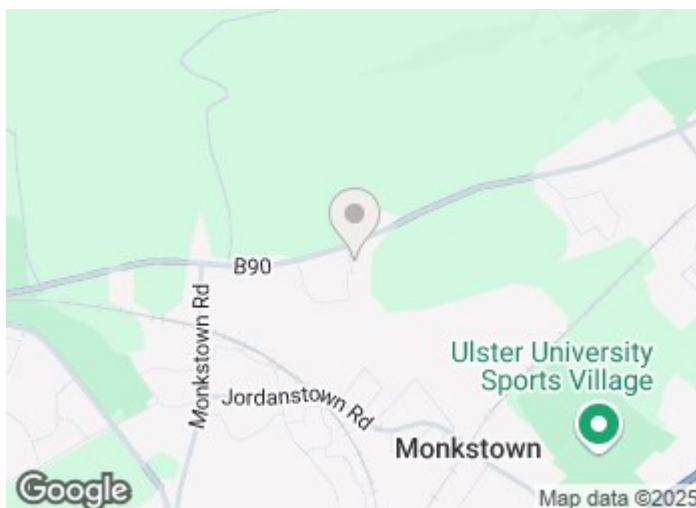
Fully tiled shower cubicle, thermostatic shower, pedestal wash hand basin, low flush wc, tiled floor, radiator, velux window

OUTSIDE

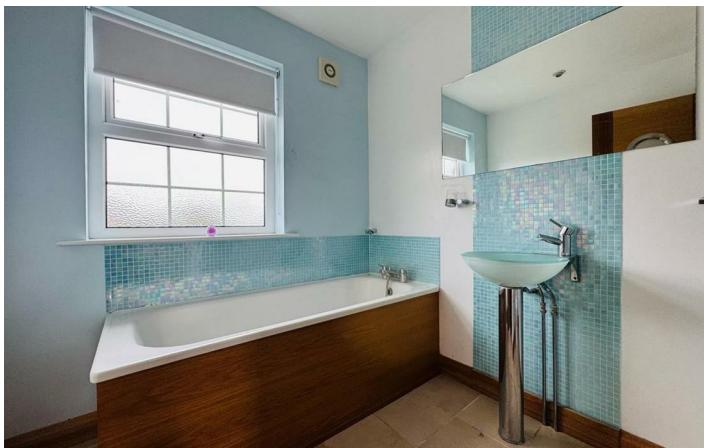
Access at rear for parking.

Garden to front in lawn

Fully enclosed pebbled garden to rear with raised decking area



Directions



Floor Plan

These particulars, whilst believed to be accurate are set out as a general outline only for guidance and do not constitute any part of an offer or contract. Intending purchasers should not rely on them as statements of representation of fact, but must satisfy themselves by inspection or otherwise as to their accuracy. No person in this firm's employment has the authority to make or give any representation or warranty in respect of the property.

