



Bond
Oxborough
Phillips

Changing Lifestyles

93 Plymouth Road
Tavistock
PL19 8BY



Asking Price - £222,500



Changing Lifestyles

01822 600700

93 Plymouth Road, Tavistock, PL19 8BY



- Beautifully Presented Mid-Terrace Home
- Two Generous Double Bedrooms
- Modern Fitted Kitchen & Contemporary Bathroom
- Spacious Living Room with Open Fireplace
- Separate Dining Room with Bay Window
- Level Front and Rear Gardens
- Recently Replaced Mains Gas Combination Boiler



This beautifully presented two-bedroom house, boasting two generous double bedrooms, has been immaculately maintained by the current owners, combining character with modern comfort.



On the ground floor, the accommodation begins with a welcoming entrance hall, leading into a spacious dining room with a charming bay window, filling the room with natural light. The large, full-width living room is an inviting space, perfect for both relaxation and entertaining and benefits from an under-stairs cupboard, providing handy storage space. A working fireplace adds warmth and character to this room, enhancing its homely feel. At the rear of the property is a well-fitted kitchen, offering a practical space with plenty of room for culinary creativity. The ground floor is finished with tastefully chosen décor, showcasing a blend of period charm and contemporary style, and offering ample living space throughout.



This property dates back to the early 1900s, and retains much of its original character, with classic features such as picture rails, original doors, and exposed floorboards. These elements lend a sense of timeless elegance and add to the overall appeal. The spacious rooms and high ceilings typical of a property from this era create a sense of light and airiness, enhancing the overall feel of the home.

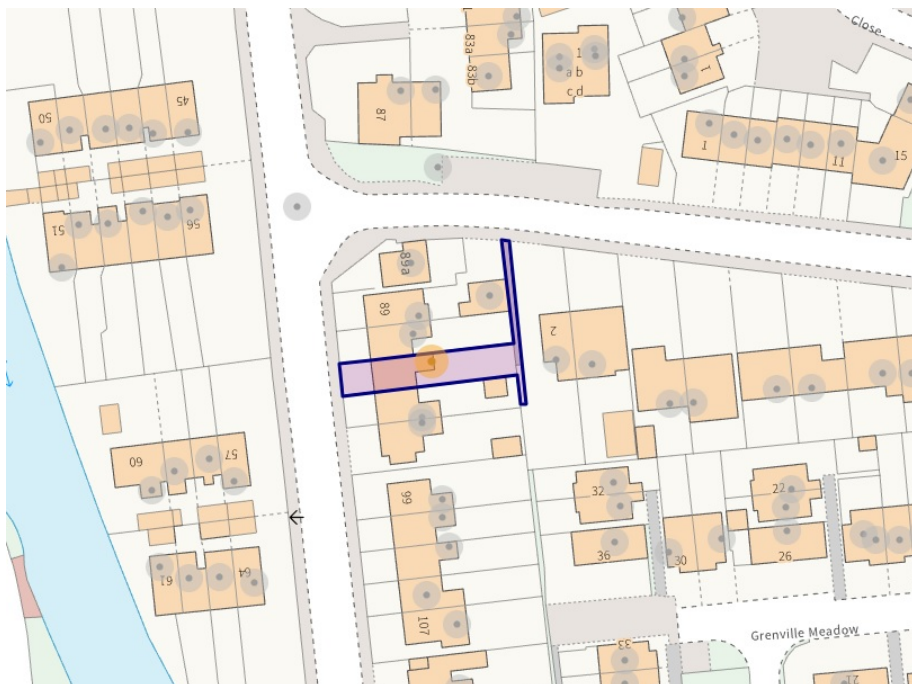
Upstairs, you'll find two well-proportioned double bedrooms, both offering a tranquil retreat with plenty of space for furniture and personal touches. The bathroom is a good size, providing ample room for relaxation and offering potential for further modernisation if desired. From the landing, there is access to a spacious loft, which offers fantastic potential for conversion (subject to necessary building regulations and consents), allowing you to create additional living space to suit your needs.

Externally, to the front of the property, you'll find a charming walled garden, which is beautifully laid to a low-maintenance patio—an ideal spot for enjoying the outdoors or entertaining guests. To the rear is an enclosed, level garden, offering a peaceful retreat with room for outdoor dining, gardening, or simply relaxing. A path at the rear provides convenient access, offering flexibility and additional options for use.

Changing Lifestyles

This well-located property offers the convenience of being within a short, level walk of local schools, a convenience store, petrol station, supermarkets, bus stops, and the popular park 'The Meadows,' as well as the Meadowlands Leisure Centre. A pleasant walk through the park alongside the River Tavy takes you directly to the town centre.

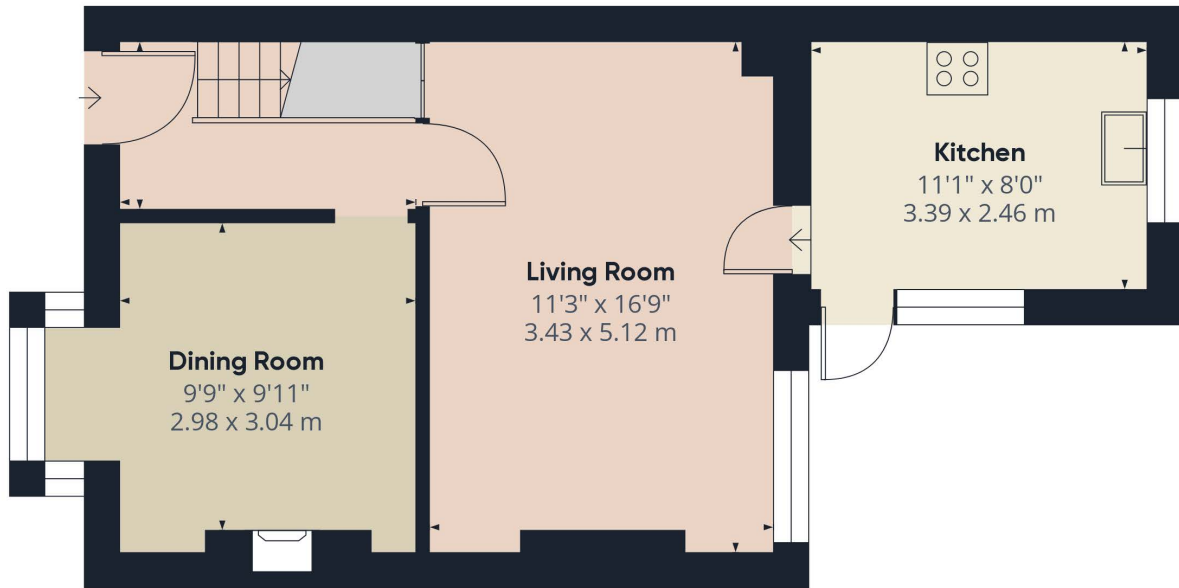
Tavistock is a vibrant Stannary market town in West Devon, situated on the western edge of Dartmoor National Park. Rich in history dating back to the 10th century, Tavistock is renowned for being the birthplace of Sir Francis Drake. The town's charming 19th-century centre is focused around Bedford Square, where you'll find a fantastic range of shopping options, including the renowned Pannier Market and a mix of local and national retailers. Tavistock also boasts a variety of public houses, cafes, restaurants, social clubs, a riverside park, a leisure centre, a theatre, a doctors' surgery, dentists, and Tavistock Hospital.



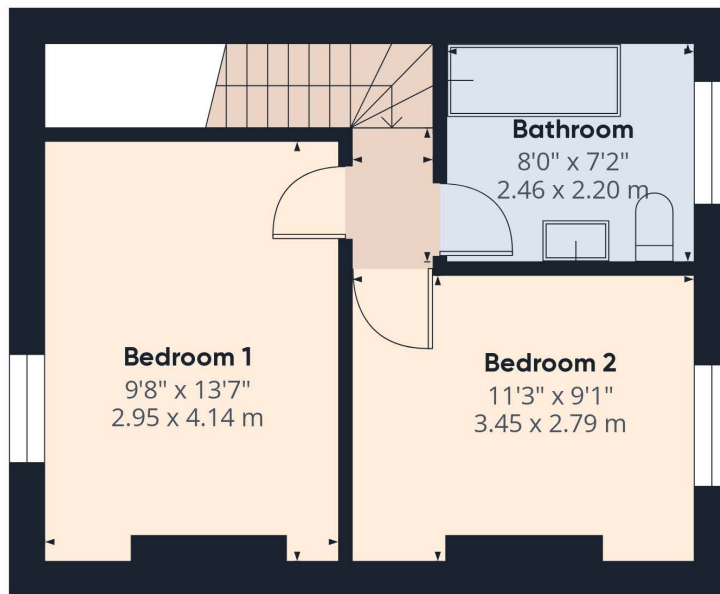
Please do not hesitate to contact
the team at
Bond Oxborough Phillips
Sales & Lettings on
01822 600700
for more information or to
arrange an accompanied viewing
on this property.

Scan here for
our Virtual Tour:





Floor 0



Floor 1

Have a property to sell or let?

If you are considering selling or letting your home, get in contact with us today on 01822 600700 to speak with one of our expert team who will be able to provide you with a free valuation of your home.

We have the facility to refer purchasers and vendors to conveyancing, mortgage advisors and Surveyors. It is your decision if you choose to deal with any of these companies however should you choose to use them we would receive a referral fee from them for recommending you. We will receive a referral fee between £50 - £300 depending on the company & individual circumstances. We have carefully selected these associates for the quality of their work and customer service levels.

Consumer Protection Regulations: We have not tested any apparatus, equipment, fixtures and fittings or services and so cannot verify that they are in working order or fit for the purpose. References to the Tenure of a Property are based on information supplied by the seller. We have not had sight of the Title Documents. A buyer is advised to obtain verification from their solicitor or surveyor. Floorplans shown are for guidance only and should not be relied upon. Items shown in photographs are NOT included unless specifically mentioned within these details. They may however be able by separate negotiation. You are advised to check the availability of this property before travelling any distance to view. Particulars are produced in good faith to the best of our knowledge and are set out as a general guide only.