


Sandymount Close, Lisburn,  
County Down, BT27

**Asking Price: £169,950**  
**Leasehold**

 **Reeds Rains**

reedsrains.co.uk

## Sandymount Close, Lisburn, County Down, BT27

**Asking Price: £169,950 Leasehold**

Council Tax Band:

EPC Rating: D

Beautifully presented semi-detached 3-bedroom house boasting a spacious garden and off-street parking. Modern interiors with ample natural light. Located in a sought-after area, close to amenities and excellent transport links. Perfect for families or professionals seeking a stylish home. Viewing highly recommended.

### Entrance Hall

Laminate flooring

### Living Room

13'8" x 12'2" (4.17m x 3.7m)

Feature fireplace with stove inset, laminate flooring

### Kitchen

15'11" x 8'1" (4.85m x 2.46m)

Extensive range of high and low level units, laminate work tops, single drainer stainless steel sink unit, built-in oven and hob unit, plumbed for washing machine, built-in fridge / freezer.

### Bathroom

White suite comprising panelled bath, wash hand basin, low level WC, wall and floor tiling, built-in hot press, chrome towel rail.

### Landing

#### Bedroom 1

13'8" x 12'2" (4.17m x 3.7m)

#### Bedroom 2

9'5" x 6'10" (2.87m x 2.08m)

#### Bedroom 3

9'5" x 6'7" (2.87m x 2m)

### Driveway/ Car Parking

Recently laid tarmac drive to side, car parking spaces.

### Enclosed to rear

Part paved patio, raised beds, enclosed and private, oil fired boiler, oil storage tank.

The Reeds Rains branches at 350 Upper Newtownards Road, Ballyhackamore, Belfast, N Ireland BT4 3EX, 18 Main Street, Bangor, Co Down, N Ireland BT20 5AG, Somerset House, 240-242 Ormeau Road, Belfast, Co Antrim, N Ireland BT7 2FZ, 10 High Street, Carrickfergus, Co Antrim, N Ireland BT38 7AF, 8/8A Carnmoney Road, Glengormley, County Antrim, N Ireland BT36 6HN, 14/16 Market Street, Lisburn, County Antrim, N Ireland BT28 1AB and 2 Frances Street, Newtownards, County Down, N Ireland BT23 4JA are operated by Favscos NI Limited which is independently owned and operated under a Licence from Reeds Rains Limited.

All Measurements

All Measurements are Approximate.

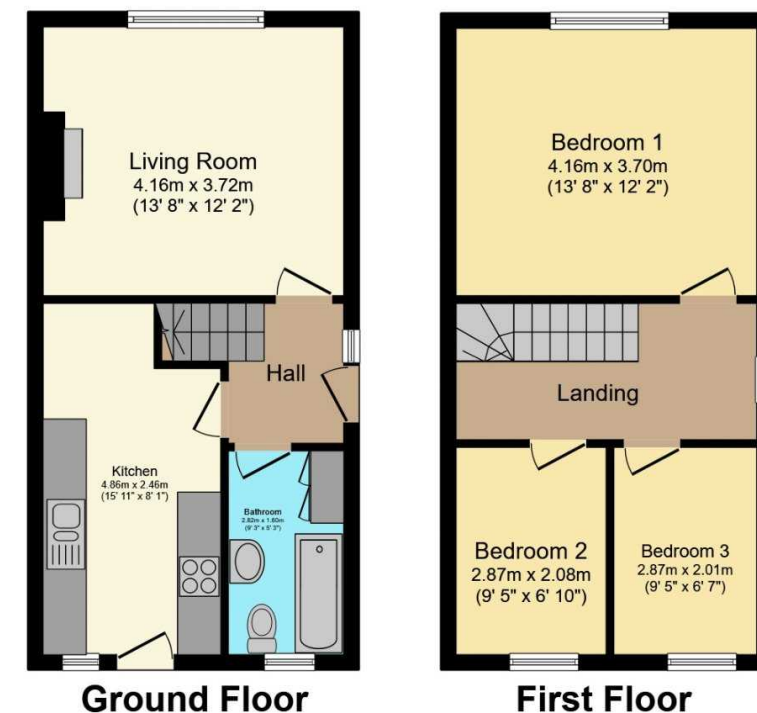
Laser Tape Clause

All measurements have been taken using a laser tape measure and therefore, may be subject to a small margin of error.

Floorplan Clause

Measurements are approximate. Not to Scale. For illustrative purposes only.

For full EPC please contact the branch.



Total floor area 72.1 sq.m. (776 sq.ft.) approx

This floor plan is for illustrative purposes only. It is not drawn to scale. Any measurements, floor areas (including any total floor area), openings and orientation are approximate. No details are guaranteed, they cannot be relied upon for any purpose and they do not form part of any agreement. No liability is taken for any error, omission or misstatement. A party must rely upon its own inspection(s). Powered by [www.focalagent.com](http://www.focalagent.com)

We may refer you to recommended providers of ancillary services such as Conveyancing, Mortgages, Insurance and Surveying. We may receive a referral fee for recommending their services. You are not under any obligation to use the services of the recommended provider, which may also be an associated company of Reeds Rains.

Other important information which you will need to know about this property can be found at [reedsrains.co.uk](http://reedsrains.co.uk)