



APT 4 PIPERS FIELD

BELFAST BT16 2AB

Offers Over

£165,000



APARTMENT | 2  | N/G  | 0 

Add text here

We are delighted to bring to the market this two-bedroom, first floor turnkey apartment located on the Comber Road in Dundonald, near the Ulster Hospital in East Belfast. The property is ideally situated within walking distance to Dundonald Village with its vast range of amenities and provides ease of access to Belfast City Centre and Belfast City Airport for the daily commuter.

This newly refurbished apartment comprises of entrance hall with built in storage, bespoke fitted kitchen open plan to living and dining room, two well-proportioned bedrooms and a contemporary shower room with white suite. The property further benefits from gas fired central heating, UPVC double glazing and private residents parking. All appliances and furniture are included in the sale.

With so many highly sought after attributes that are likely to appeal to a wide range of potential purchasers, this property is sure to gain instant momentum. We recommend viewing this at your earliest convenience.



ROOM DETAILS

COMMUNAL FRONT DOOR:

Stairs to first floor.

FRONT DOOR:

Hardwood front door into reception porch.

RECEPTION

HALL:

Built-in storage cupboard with access to electrics.

MODERN SHOWER ROOM:

Modern white suite comprising low flush WC with push button, vanity unit with chrome mixer taps, fully tiled shower cubicle with

thermostatically controlled valve, telephone hand unit and drencher shower head, fully tiled walls, ceramic tiled floor, chrome heated towel rail, low voltage recessed spotlighting, extractor fan, frosted glass window, built-in storage cupboard, plumbed for washing machine, space for tumble dryer.

BEDROOM (1):

(13'10" x 10'1")

Outlook to rear.

BEDROOM (2):

(9'4" x 8'8")

Outlook to rear.

KITCHEN OPEN PLAN TO LIVING

AND DINING ROOM:

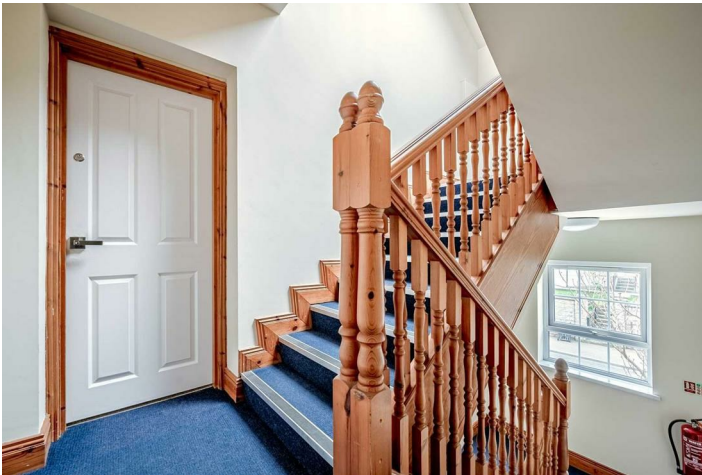
(25'10" x 13'8")

Kitchen with excellent range of high and low level units in high white gloss, laminate worktops, stainless steel sink and half with chrome mixer taps, built-in low level oven, four ring ceramic hob, stainless steel extractor above, part tiled walls, integrated fridge freezer, access to Vokera gas boiler, ceramic tiled floor, low voltage recessed spotlighting, open plan to living and dining space, uPVC double glazed French doors to Juliet balcony.

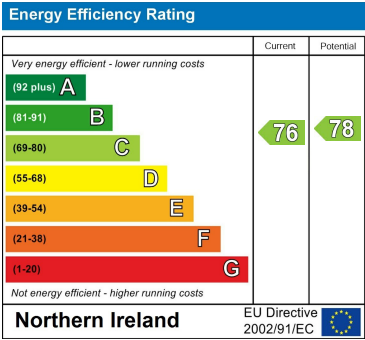


DIRECTIONS

Travelling along the Upper Newtownards Road in the direction of the Ulster Hospital, take a right turn on to Comber Road. Pipers Field is located on the left hand side of the road after the row of shops.



THE LOCAL AREA



Scan QR code for more details and to arrange a viewing.

OUR BRANCHES

B' FAST (028) 9065 3333 H'WOOD (028) 9042 8888 BANGOR (028) 9131 3833 D'DEE (028) 9188 8881 COMBER (028) 9187 1212

property@johnminnis.co.uk JOHNMINNIS.CO.UK

