



To arrange a private consultation appointment, please contact Armstrong Gordon on 028 7083 2000

FREE INDEPENDENT FINANCIAL ADVICE

Mortgage Services:

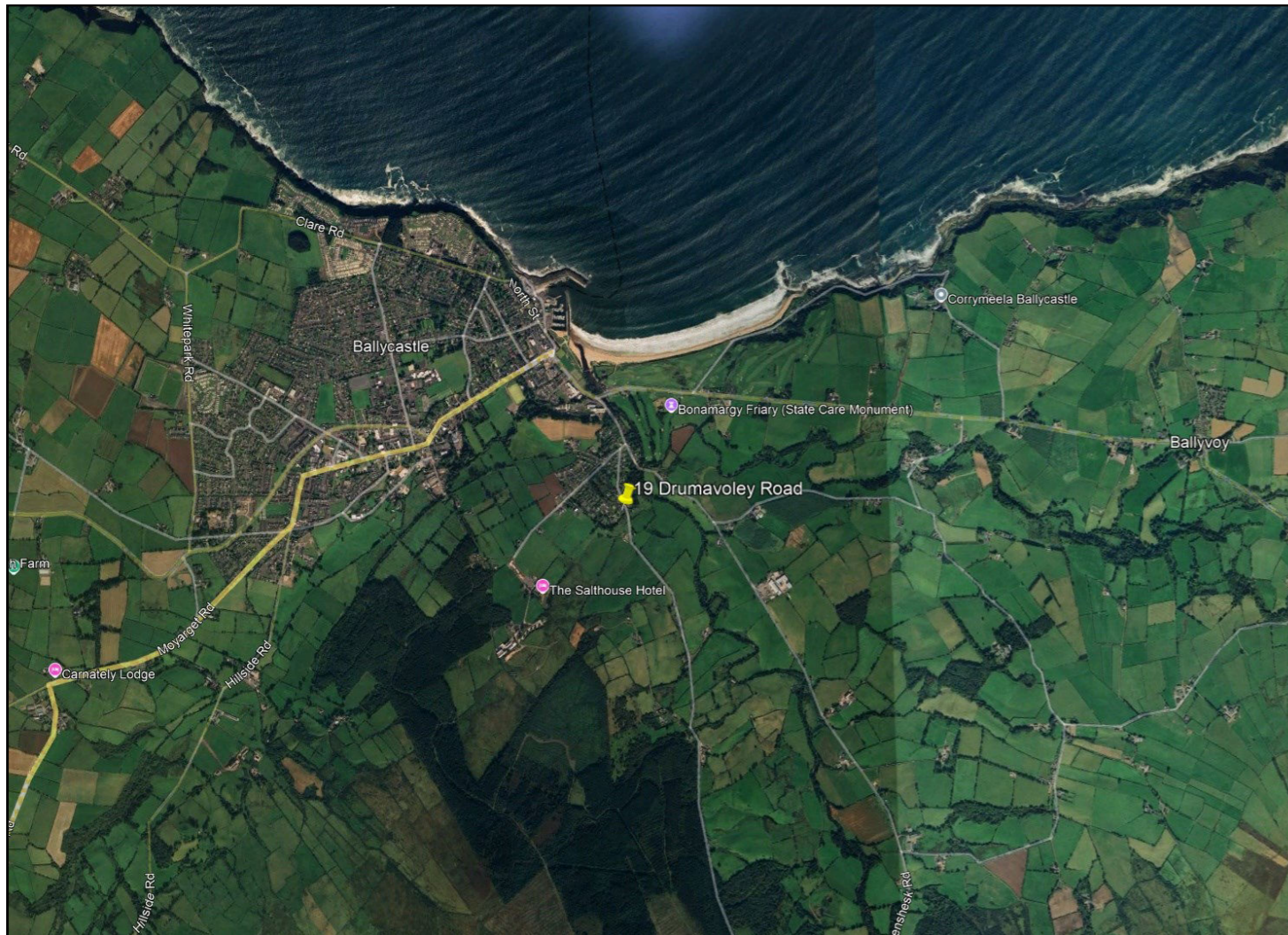
- First Time Buys
- Home Movers
- Remortgaging
- Holiday/ Second Homes
- Holiday Lets
- Buy To Let
- Co-Ownership

Other Financial Services:

- Mortgage Protection
- Life Insurance
- Critical Illness Cover
- Income Protection
- Buildings & Content Insurance
- Landlord Insurance



ARMSTRONG GORDON



19 Drumavoley Road



64 The Promenade Portstewart BT55 7AF
T. 028 7083 2000

F. 028 7083 2950 E. info@armstronggordon.com W. www.armstronggordon.com



BALLYCASTLE

19 Drumavoley Road

BT54 6PG

Offers Over £499,500

Armstrong Gordon & Co. Ltd Estate Agents for themselves and for the vendors and for the lessors of this property whose agents they are given notice that: (1) the particulars are set out as a general outline only for the guidance of intending purchasers or lessees, and do not constitute, nor constitute part of an offer or contract; (2) all descriptions, dimensions, references to condition and necessary permissions for use and occupation and other details are given without responsibility and any intending purchaser or tenants should not rely on them as statements or representations of fact but must satisfy themselves by inspection or otherwise as to the correctness of each of them; (3) no person in the employment of Armstrong Gordon has any authority to give any representation or warranty whatever in relation to this property

028 7083 2000
www.armstronggordon.com

Nestled in the picturesque countryside just minutes from Ballycastle, this exceptional four bedroom home at 19 Drumavoley Road offers a perfect blend of modern luxury and tranquil rural living. Boasting sweeping country views, this beautifully designed property is ideal for families seeking space, comfort, and elegance. Upon entering, you are greeted by five spacious reception rooms, providing versatile living and entertaining areas. The contemporary kitchen is finished to a high standard, featuring quality appliances and ample dining space. Each of the four well-proportioned bedrooms offers comfort and style, with the master suite enjoying stunning views of the surrounding landscape.

Externally, the property benefits from a large double garage, generous private grounds, and a peaceful setting that enhances the home's charm. With its blend of modern living and breathtaking scenery, this is a rare opportunity to acquire a dream home in one of Ballycastle's most desirable locations.

Start at Ballycastle Diamond (Town Centre) and head southwest on Castle Street (B15). Continue on Castle Street for about 1 mile, passing Ballycastle Golf Club on your left. At the roundabout, take the second exit onto Cushendall Road, Continue for approximately 1.5 miles, then turn right onto Drumavoley Road. Follow Drumavoley Road for about 0.8 miles, and the house will be on your right-hand side.

ACCOMMODATION COMPRISES:

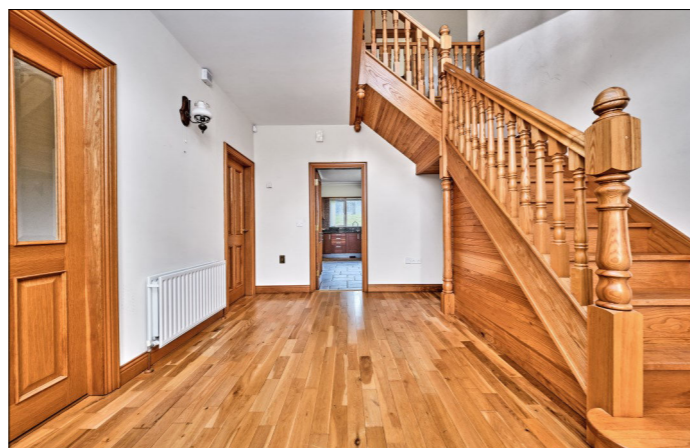
GROUND FLOOR:

Large entrance Hall:

11'10 wide with wiring for wall lights, under stairs storage cupboard, solid oak stairs and floor.

Lounge: 18'11 x 13'5

With marble fireplace and hearth, plaster coving and cornicing, recessed lighting and solid oak floor.



Living Room:

With recessed lighting, solid oak floor and sliding patio doors leading to rear garden . 14'2 x 13'1



Dining Room: 13'11 x 13'8

With wiring for wall lighting, recessed lighting, plaster coving and cornicing, solid oak floor and patio doors leading to:



Large Sun Room:

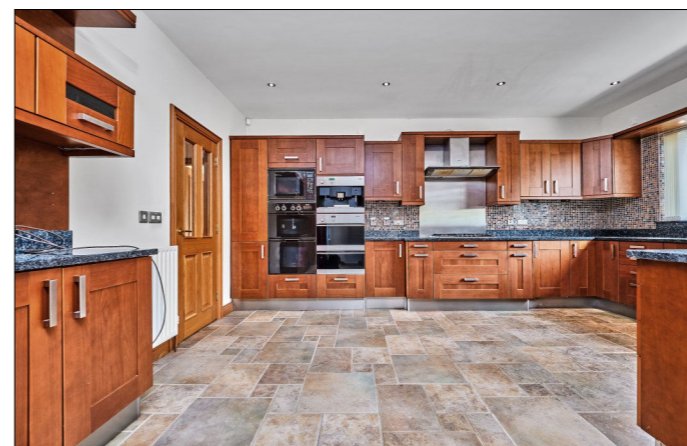
With solid oak floor, high vaulted ceilings with recessed lighting and pedestrian door leading to rear garden. 11'10 x 11'4



Kitchen: 22'2 x 17'1

The bespoke kitchen is well designed, stylish and equipped with high specification finishes and appliances.

With Pronorm kitchen comprising undermount double stainless steel sink unit set in marble worktops and upstands, high and low level built in Maple units with tiling between, integrated eye level 'Miele' double stainless steel oven and 'Miele' double oven, integrated microwave and 'Miele' coffee machine, 5 ring gas 'Neff' cooker with stainless steel splashback, stainless steel 'Neff' extractor fan above, integrated dishwasher, integrated stand alone cupboard, space for American style fridge freezer, glass display cupboard, shelving and glass display cabinets, wine rack, recessed lighting, drawer bank and saucepan drawers, plate warmer, recessed lighting in pelmets, larder cupboards, over head storage and tiled floor.





Separate W.C.:

With wash hand basin set in vanity unit and tiled floor.

Conservatory:

With extractor fan in ceiling and tiled floor. Pedestrian door leading to double garage and patio doors leading to side of property. 17'2 x 12'6



Double Garage:

With double roller door with PVC remote control doors, stainless steel sink unit, low level units, and plumbed for automatic washing machine and tumble dryer. 23'8 x 17'8



FIRST FLOOR:

Landing:

With large open plan area with large built in hot press, area to roof space, large balcony overlooking surrounding countryside and solid oak floor. Area is suitable to use as a study area.



Bedroom 1:

With solid wood floor. 14'3 x 13'5

Ensuite off with w.c., wash hand basin, fully tiled walk in shower cubicle with jet shower, stainless steel towel rail, tiled walls and floor.



Bedroom 2:

With solid oak floor. 14'4 x 10'4



Master Bedroom:

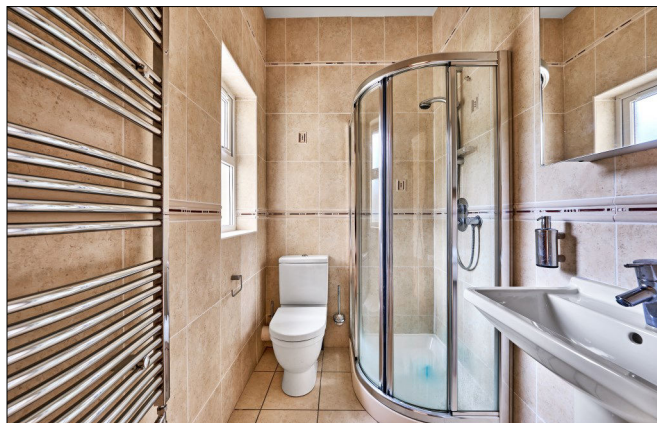
With 'Hulsta' luxury solid wood wall wardrobes with mirrored panels, low level units and sink unit after built in drawers and solid oak floor. 17'6 x 14'0



Bedroom 4:

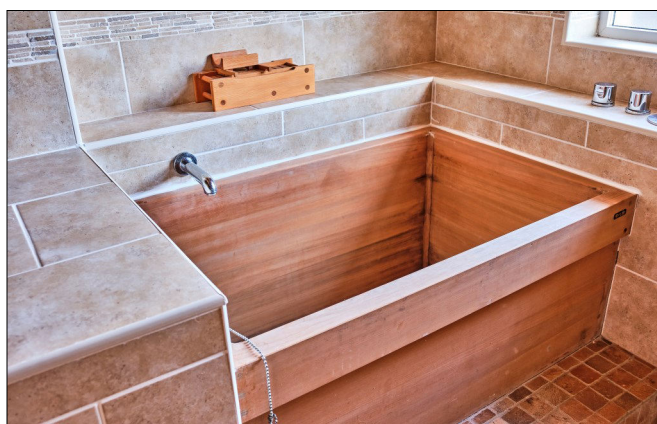
With solid oak floor. 13'5 x 12'2

Ensuite off with w.c., wash hand basin, fully tiled walk in corner shower cubicle, chrome heated towel rail, tiled walls and floor.



Bathroom/Wet Room:

With floating w.c., floating wash hand basin, sunken Japanese bath and wall mounted shower, fully tiled walls, vertical radiator, shelving, tiled floor and pine sheeted ceiling with recessed lighting.



EXTERIOR FEATURES:

Outside to rear there is a large walled in garden with a raised decking and patio area. Outside to front there is a garden laid in lawn with paved driveway extending to detached garage.

SPECIAL FEATURES:

- ** Oil Fired Central Heating
- ** PVC Double Glazed Windows
- ** First Floor Bison Slab Floors
- ** Burglar Alarm
- ** Sun Room & Conservatory To Side & Rear
- ** Extremely Large Room Sizes
- ** Beam Vac System
- ** Kitchen Appliance Are Miele & Have Never Been Used
- ** Good Modern Condition Throughout

TENURE:

Freehold

CAPITAL VALUE:

£290,000 (Rates: £2843.16 p/a approx.)

