



38 Laurel Park

Ahoghill, Ballymena, BT42 1LN

Offers Around £105,000



38 Laurel Park

Ahoghill, Ballymena, BT42 1LN

Offers Around £105,000



ACCOMMODATION

GROUND FLOOR

Entrance Hallway

5'0" x 8'1" (1.53 x 2.46)

Vinyl flooring.

Living Room

12'11" x 14'6" (3.93 x 4.42)

Laminate floor. Under stairs Cupboard

Kitchen With Informal Dining Area

18'0" x 10'6" (5.48 x 3.21)

Stainless Steel Sink. High and Low Level Cupboards. High Gloss White. Space for Dishwasher, Washing Machine, Tumble Dryer, Fridge and Family Dining Table. Halogen Hob and Electric oven. Glass Display Cabinets. Tiled floor and Splash back. Boiler Cupboard

FIRST FLOOR

Landing

Access to roof space.

Bedroom 1- Front

8'8" x 9'1" (2.65 x 2.78)

Bedroom 2

12'0" x 8'11" (3.65 x 2.71)

Built in Storage Cupboard

Bedroom 3- Rear

9'4" x 11'7" (2.84 x 3.54)

Two Built in Storage Cupboards.

Bathroom

6'2" x 5'6" (1.89 x 1.68)

Fully Tiled. Wash Hand Basin. High Flush WC. Electric Shower.

Outside

Front garden in lawn with plants and shrubs.

Enclosed rear yard area with garden and private parking.

Access to outside store.

PVC fascia, soffits and rainwater goods.

Outside tap and lighting



Road Map



Hybrid Map

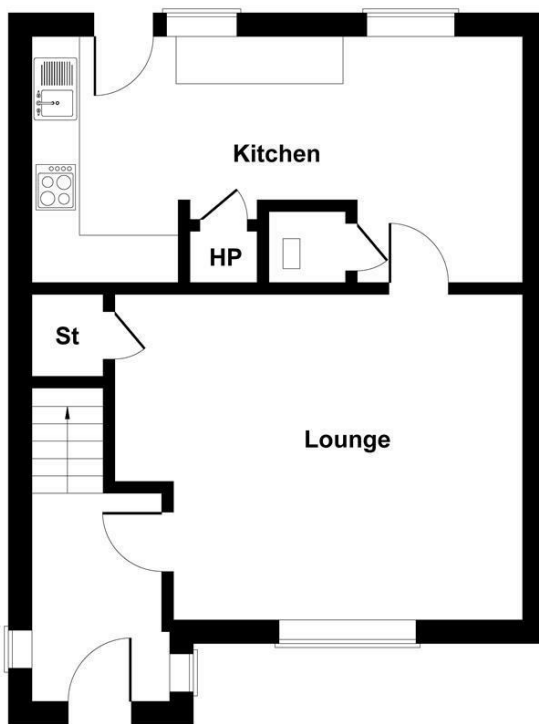


Terrain Map

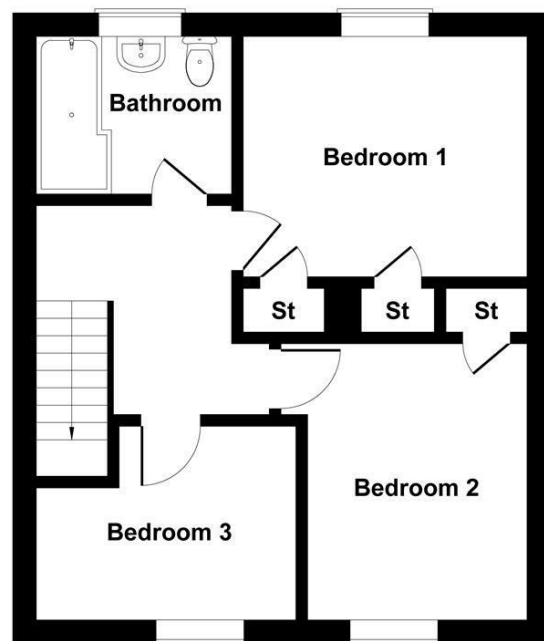


Floor Plan

38 Laurel Park



GROUND FLOOR



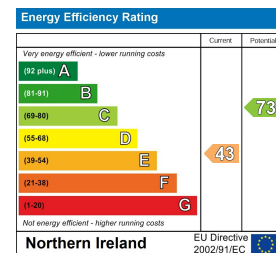
FIRST FLOOR

Not to Scale. Produced by The Plan Portal 2025
For Illustrative Purposes Only.

Viewing

Please contact our Ballymena Office on 02825655733 if you wish to arrange a viewing appointment for this property or require further information.

Energy Efficiency Graph



These particulars, whilst believed to be accurate are set out as a general outline only for guidance and do not constitute any part of an offer or contract. Intending purchasers should not rely on them as statements of representation of fact, but must satisfy themselves by inspection or otherwise as to their accuracy. No person in this firm's employment has the authority to make or give any representation or warranty in respect of the property. Edmondson Estates have not tested any services, equipment, or facilities within the premises and will not be liable, in negligence or otherwise, for any loss arising from the use of these particulars.