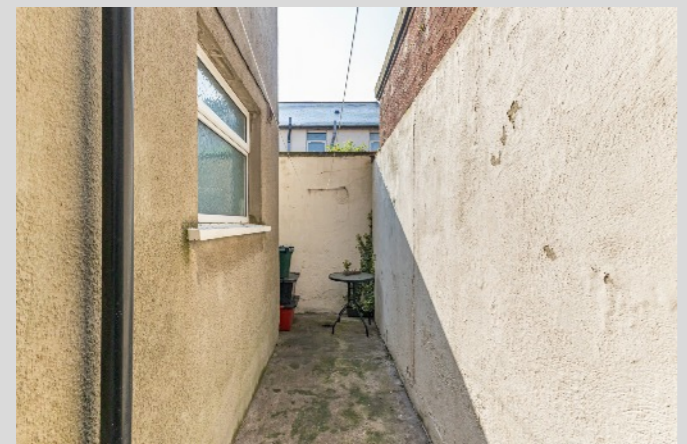


Outside

ENCLOSED REAR YARD: Access to alleyway.

TEMPLETON
ROBINSON

TEMPLETON
ROBINSON



Glenvarlock Street is conveniently located just off the Castlereagh Road, within walking distance of local shops, cafes, a Tesco Superstore and public transport.

Offers Over
£115,000

No 27 benefits from a double storey extension, with the property boasting three good sized bedrooms, lounge, separate kitchen and ground floor bathroom. The property benefits from gas central heating and double glazing.

27 Glenvarlock Street,
Belfast,
BT5 5GS

With a little modernisation, this is a perfect opportunity for a first time buyer to put their own stamp on their starter home. The property will also appeal to investors.

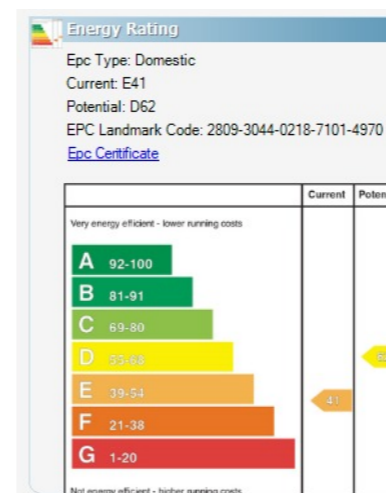
Viewing by
appointment with
& through agent
028 9065 0000

- Ballyhackamore - 028 90 65 0000
- Lisburn Road - 028 90 66 3030
- North Down - 028 90 42 4747
- Lisburn - 028 92 66 1700

www.templetonrobinson.com



These particulars do not constitute any part of an offer or contract. None of the statements contained in these particulars are to be relied on as statements or representations of fact and intending purchasers must satisfy themselves by inspection or otherwise to the correctness of each of the statements contained in these particulars. The Vendor does not make or give, neither Templeton Robinson, nor any person in its employment has any authority to make or give, any representation or warranty whatever in relation to this property. All dimensions are taken to nearest 3 inches.



27 Glenvarlock Street,
Belfast,
BT5 5GS

Property Features

Extended mid terrace property

Lounge, leading to...

Fitted kitchen with understairs storage cupboard

Three double bedrooms

Ground floor bathroom with coloured suite

Gas central heating/uPVC Double Glazing

Within walking distance of cafes, shops and public transport

Price allowing for some updating

Perfect for first time buyers and investors

Property Comprises

Ground Floor

Front door to:

ENTRANCE PORCH: Laminate wood effect floor.

LOUNGE: 14' 0" x 10' 1" (4.27m x 3.07m)

KITCHEN: 11' 4" x 8' 10" (3.45m x 2.69m) Fitted kitchen with range of high and low level units, stainless steel single drainer sink unit, alcove for cooker, extractor hood, part tiled walls, under stairs storage cupboard.

INNER HALLWAY: Cloakroom. Gas boiler cupboard. Glazed door to rear.

BATHROOM: Coloured suite comprising panelled bath, low flush wc, fully tiled shower cubicle with electric shower, part tiled walls, recessed spotlights.

First Floor

LANDING: Access to roofspace.

BEDROOM (1): 13' 11" x 10' 3" (4.24m x 3.12m)

BEDROOM (2): 12' 11" x 7' 10" (3.94m x 2.39m) (at widest points).

BEDROOM (3): 8' 10" x 7' 11" (2.69m x 2.41m)



Location:

Heading out of Belfast on the Castlereagh Road, Glenvarlock Street is located on the left, a few streets before Tesco Superstore.