

## 10 Beech Close

Bleary, Portadown, BT63 5LN

Jones Estate Agents welcome to the market this three bedroom mid terrace property in a quiet cul-de-sac in the village of Bleary. Within walking distance to access to local shops and school. This property offers the chance to live in a peaceful semi-rural location, with the larger neighbouring towns of Portadown, Lurgan and Craigavon just a short drive away.

This property offers well proportioned accommodation with three bedrooms, Living room with modern fireplace and closed fronted fire, kitchen/dining, utility room, downstairs WC and family bathroom. To the rear is a private fully enclosed garden laid in lawn with large patio area.

This is an ideal home for first time buyers who want to take the first steps on the property ladder!  
Early viewing is highly recommended.

**£125,000**

# 10 Beech Close

Bleary, Portadown, BT63 5LN



- Three Bedrooms
- Living Room with Marble Fireplace
- Kitchen/Dining
- Utility Room
- Family Bathroom
- Private Enclosed Rear Garden
- OFCH
- PVC Double Glazing

Entrance Hall

Living Room

12'8" x 12'9" (Deepest Points)

Kitchen/Dining

12'7" x 10'4"

Utility Room

7'3" x 6'6"

Downstairs WC

Stairs and Landing

Bedroom 1

11'4" x 10'5"

Bedroom 2

12'8" x 9'4"

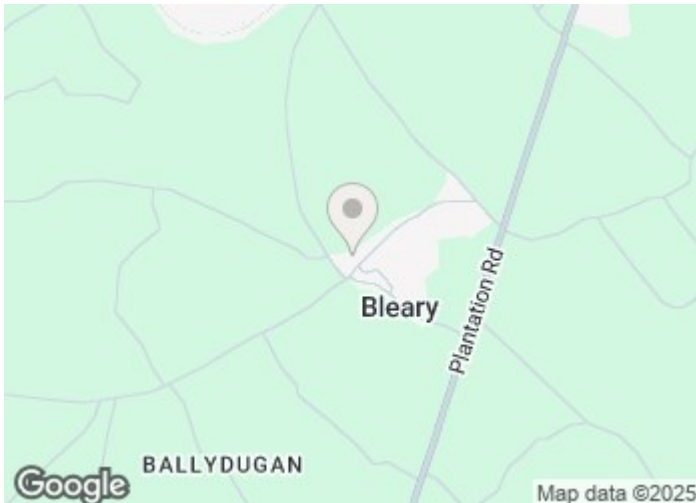
Bedroom 3

8'10" x 8'4"

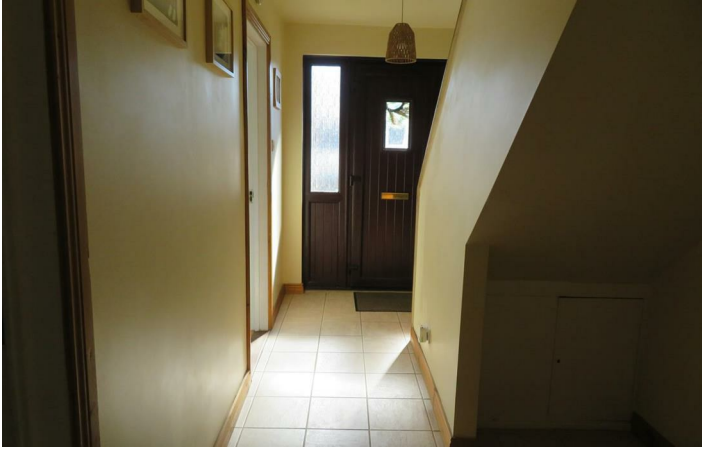
Bathroom

6'6" x 5'7"

Outside



[Directions](#)





## Floor Plan

These particulars, whilst believed to be accurate are set out as a general outline only for guidance and do not constitute any part of an offer or contract. Intending purchasers should not rely on them as statements of representation of fact, but must satisfy themselves by inspection or otherwise as to their accuracy. No person in this firm's employment has the authority to make or give any representation or warranty in respect of the property.

32 High Street, Lurgan, Armagh, BT66 8AW  
Tel: 028 3832 2244 Email: [info@jonesestateagents.com](mailto:info@jonesestateagents.com) [www.jonesestateagents.com](http://www.jonesestateagents.com)

