



Set in the heart of Finaghy this semi-detached home occupies a popular park and enjoys excellent proximity to a broad range of shops and services, transport facilities and schools.

Briefly the accommodation comprises; entrance hall, living room with feature fireplace, separate lounge and modern fitted kitchen. On the first floor there are three well proportioned bedrooms and a modern bathroom.

Externally there are delightful, enclosed rear gardens in lawns with various patio areas, good sized side lawns with mature hedging and garden store.

The property is well cared for throughout.

Suitable for a range of buyers and in a consistently popular location we recommend an internal viewing at your earliest convenience.

Offers Over
£325,000

7 Orpen Park,
BELFAST,
BT10 0BN

Viewing by
appointment
through agent
028 9066 3030



- Well Presented Three Bedroom Semi-Detached with Delightful Landscaped Gardens
- Entrance Hall
- Living Room with Feature Fireplace and Separate Lounge
- Modern Fitted Kitchen
- Three Well Proportioned Bedrooms
- Modern Bathroom
- Gas Heating / Double Glazed Windows
- Popular Park Walking Distance of the Amenities in Finaghy and to the Lisburn Road and Public Transport to the Local Cities
- Ideally Located Close to Many Popular Schools

The Property Comprises:

Ground Floor

uPVC front door to:

ENTRANCE HALL: Wooden floor.



LIVING ROOM: 13' 3" x 10' 4" (4.04m x 3.15m) Painted fireplace with marble inset and hearth, gas coal effect fire, wooden floor. Sliding glazed door to rear. Cornice ceiling.



Telephone 028 9066 3030

www.templetonrobinson.com

LOUNGE: 11' 10" x 11' 0" (3.61m x 3.35m) Painted wooden surround fireplace with marble inset and hearth, laminate wood effect floor, cornice ceiling.



MODERN FITTED KITCHEN: 15' 7" x 8' 1" (4.75m x 2.46m) Range of high and low level units, work surfaces, one and a half bowl single drainer stainless steel sink unit, integrated oven and hob, stainless steel extractor fan over. Integrated dishwasher, integrated fridge/freezer, integrated washing machine. Part tiled walls, ceramic tiled floor, low voltage spotlights, uPVC door to rear.



LANDING: Access to roofspace.



BEDROOM (1): 13' 4" x 10' 8" (4.06m x 3.25m) Range of built-in robes and storage.



BEDROOM (2): 11' 9" x 8' 8" (3.58m x 2.64m) Laminate wood effect floor, built-in robes with mirrored doors.

BEDROOM (3): 8' 7" x 8' 2" (2.62m x 2.49m)



MODERN BATHROOM: White suite comprising low flush wc, pedestal wash hand basin, panelled bath with electric shower, part tiled walls, ceramic tiled floor, low voltage spotlights. Airing cupboard, gas boiler.



Outside

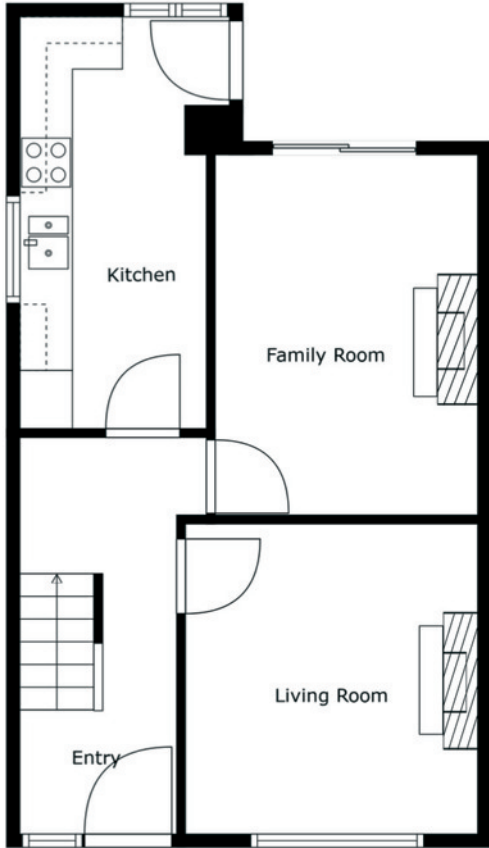
Front garden in lawns and lawn to the side with mature hedging.

Delightful south facing enclosed gardens with various paved patio areas, lawns and boundary fencing. Garden store with space for tumble dryer.

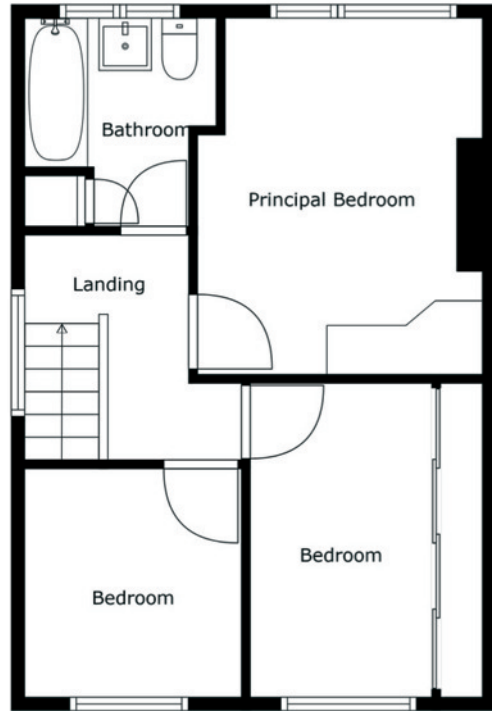


Telephone 028 9066 3030

www.templetonrobinson.com



Floor 1



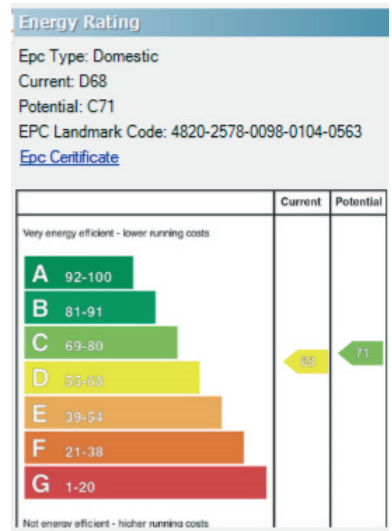
Floor 2

Sizes And Dimensions Are Approximate. Actual May Vary.

Location:

From Finaghy Cross Roads heading towards Lisburn, take left into Orpen Park and the house is on the right hand side.

Lisburn Road - 028 90 66 3030
 Ballyhackamore - 028 90 65 0000
 Lisburn - 028 92 66 1700
 North Down - 028 90 42 4747
www.templetonrobinson.com



These particulars do not constitute any part of an offer or contract. None of the statements contained in these particulars are to be relied on as statements or representations of fact and intending purchasers must satisfy themselves by inspection or otherwise to the correctness of each of the statements contained in these particulars. The Vendor does not make or give, neither Templeton Robinson, nor any person in its employment has any authority to make or give, any representation or warranty whatever in relation to this property. All dimensions are taken to nearest 3 inches.