

For Sale
By Private Treaty

Guide Price
€245,000

REA
JOHN LEE



BER B3

20 The Meadow, Ros Fearna

MURROE, CO. LIMERICK.

V94 W73K

3 Bedroom Mid Terraced Residence c. 94 sq.m.



reajohnlee.ie

PSRA: 002764



| Location

This property is situated a short walk from the centre of Murroe village and is within easy reach of the University of Limerick, only 25 minutes from Limerick City with easy access to the M7 motorway. Schools, shops, childcare, bar, café and church are all within a short stroll.

| Description

REA John Lee are delighted to bring to the market this ideally situated 3 bedroom mid terraced residence within walking distance of the centre of Murroe. The property is well proportioned throughout and has been recently redecorated throughout, ready for immediate occupation. The rear garden features a large patio and lawn area. There is ample parking to the front with a tarmac driveway. It is an ideal home for a first time buyer or investor within easy commuting distance of Limerick City and University. Appointment to view can be arranged through the agent agents.

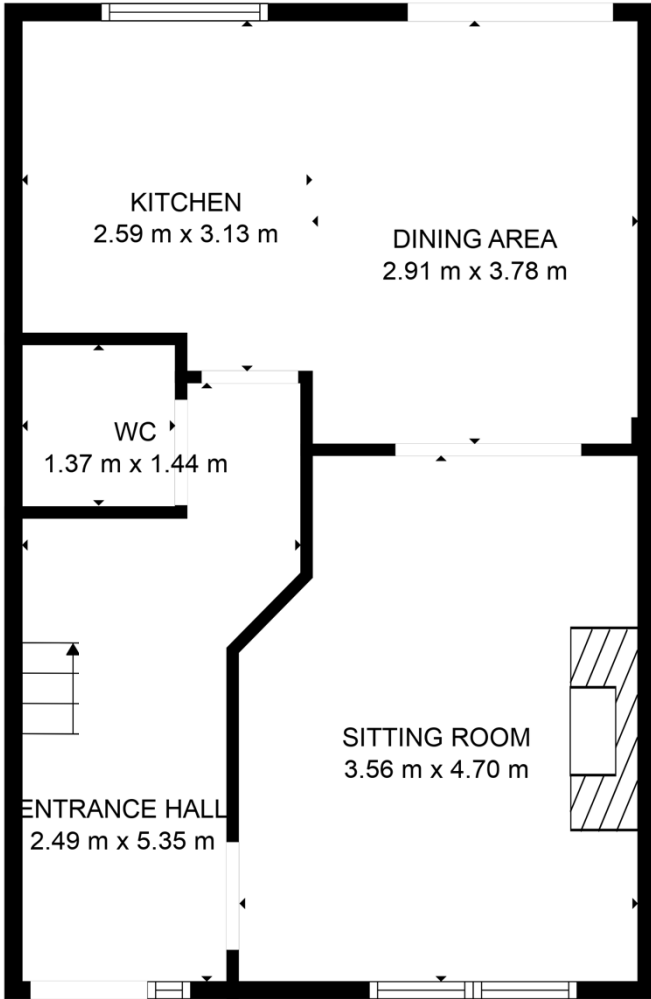
Services include; Mains ESB, Mains Water, Oil Fired Central Heating, Mains Sewerage, upvc double glazed windows.

Built c. 2004. c. 98 sq.m.

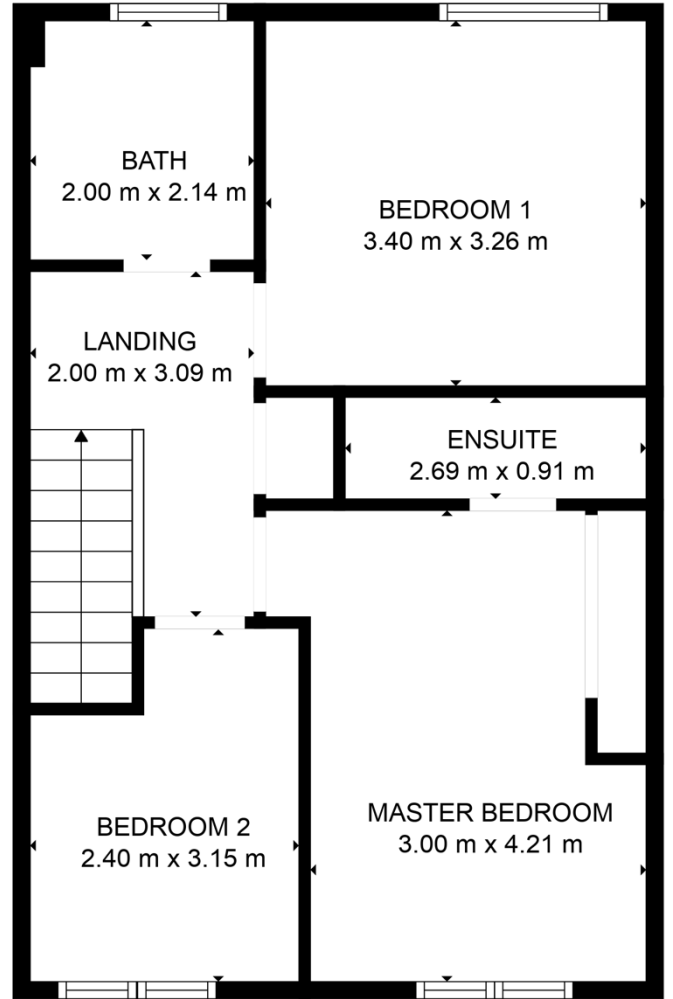
Call 061 378 121



| Accommodation

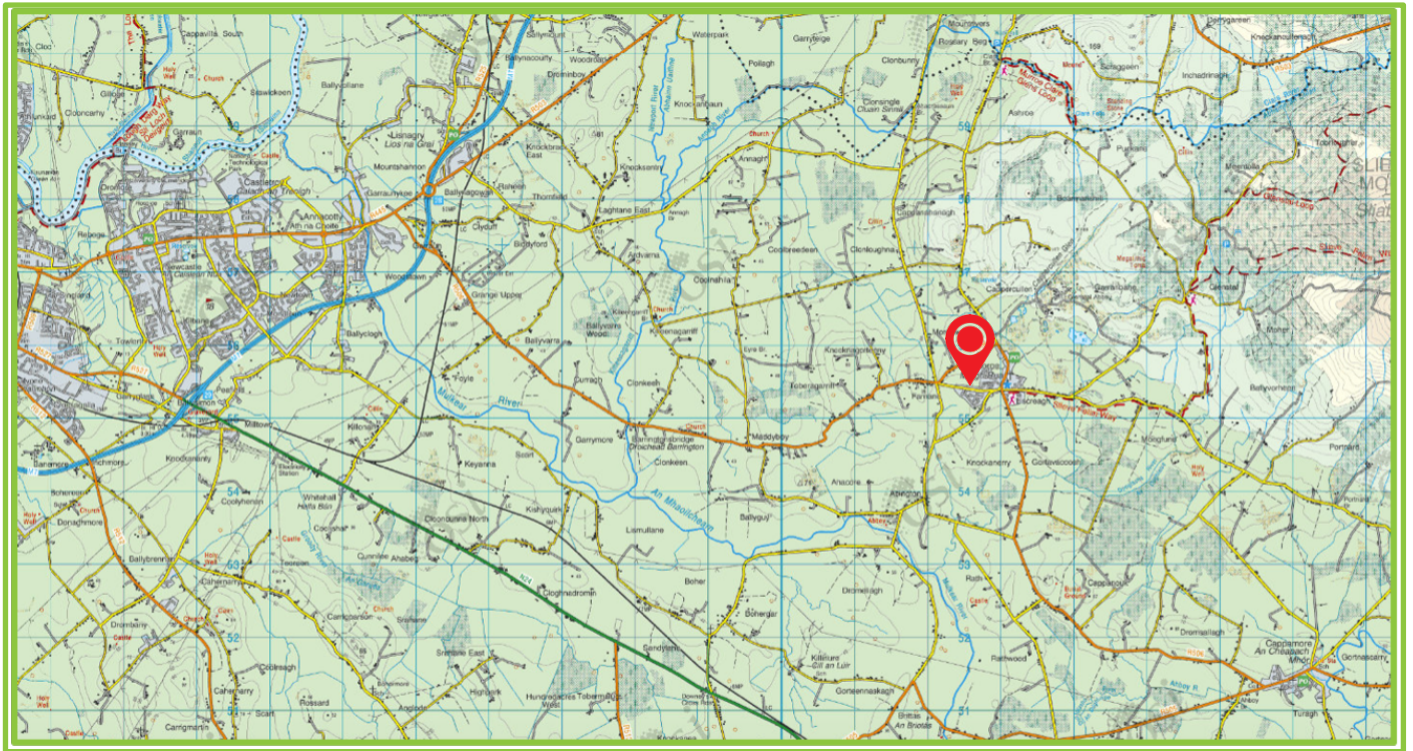


FLOOR 1



FLOOR 2

FLOOR PLAN CREATED BY CUBICASA APP. MEASUREMENTS DEEMED HIGHLY RELIABLE BUT NOT GUARANTEED.



| Outside

The property enjoys an excellent location a short distance from Murroe village with ample parking to the front and enclosed garden to the rear with patio area.

| BER

B3
149.33 kWh/m²/yr
BER No. 111122693

| Viewing

By prior appointment.

| Directions

Coming into Murroe from Limerick veer right at the 5 Roads. Take 1st right turn into Ros Fearná, take 1st right and the property is a short distance on the left after the creche.
Eircode: V94 W73K

| Price

€245,000



| Selling agents

REA John Lee
Main Street,
Newport,
Co. Tipperary.
V94 FC8Y

T 061 378121
E info@reajohnlee.ie
W www.reajohnlee.ie

| Sales agent

James Lee
BSc. Hon's., MRICS MSCSI
Director

T (086) 235 1221
E james@reajohnlee.ie

CONDITIONS TO BE NOTED: The terms set out herein are by way of partial summary. Intending purchasers should obtain a copy of the Conditions of Sale where the matters are dealt with comprehensively. Particulars and Conditions of sale are available from the Agents and the Solicitors with carriage of sale. REA John Lee for themselves and for the vendors whose agents they are, give notice that: 1) The particulars are set out in this Brochure and Schedule as a general outline for the guidance of intending purchasers and do not constitute part of an offer or contract. 2) All descriptions, dimensions, references to condition and necessary permissions for the use and occupation and other details are given in good faith and are believed to be correct but any intending purchasers should not rely on them as statements or representations of fact but must satisfy themselves by inspection or otherwise as to the correctness of each of them. 3) No person in the employment of REA John Lee has any authority to make representations or warranty whatsoever in relation to this property. All prices quoted are exclusive of VAT

reajohnlee.ie PSRA: 002764

