



485 Lisburn Road, Belfast, BT9 7EZ  
Tel: 02890 661111  
Email: [info@fetherstons.com](mailto:info@fetherstons.com)  
Web: [www.fetherstons.com](http://www.fetherstons.com)

**20 Sharman Way**

Stranmillis  
BT9 5FU

**Offers Over £425,000**



## 20 SHARMAN WAY, BT9 5FU

- **Attractive Detached Family Home in a Quiet Cul de Sac Location**
- **Lounge with Feature Fireplace**
- **Separate Family Room**
- **Modern Fitted Kitchen Open Plan to Dining Area/Separate Utility Room**
- **4 Bedrooms Including Master with Ensuite Shower Room**
- **Family Bathroom / Ground Floor Cloakroom with WC**
- **Exceptionally Presented Throughout**
- **Gas Central Heating/Double Glazed Windows**
- **Enclosed and Private Rear Garden with Sheltered Sitting Area**
- **Convenient to Amenities Including Shops, Public Transport and Leading Schools**

This attractive, extended detached property is situated in a prime end of cul de sac location just off Stranmillis Road.

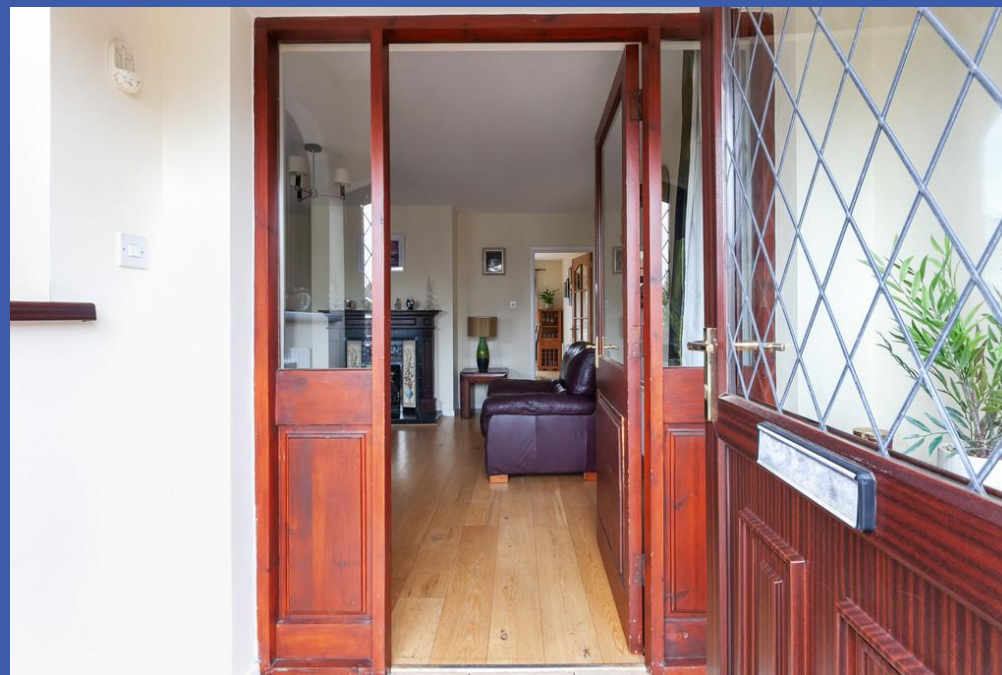
The property is well-presented and tastefully decorated by the current owner and offers spacious, well proportioned accommodation which is finished to a high specification throughout.

The internal accommodation offers spacious family accommodation which briefly comprises, on the ground floor, an entrance hall, bright lounge, separate living room along with a superb kitchen which is open plan to dining and family areas and has a separate utility room and guest wc.

On the first floor there are four bedrooms, including master with ensuite shower room and a family bathroom.

Externally the property offers private enclosed gardens to the rear with a generous sheltered patio sitting area.

This fine home is ideally located close to many local amenities including shops and public transport whilst being convenient to leisure facilities at The Belfast Boat Club and The Lagan Towpath. In addition, there are numerous leading schools in close proximity, including Stranmillis Primary School.









## PROPERTY COMPRISES

Mahogany effect uPVC double glazed front door with double glazed side windows to..

**ENTRANCE HALL** Tiled floor, glazed door to..

**LOUNGE 17' 0" x 14' 4" (5.18m x 4.37m)** Wood flooring, attractive mahogany fireplace with cast iron and tiled inset and tiled hearth with gas coal effect fire, bow window

**KITCHEN OPEN PLAN TO DINING ROOM 17' 0" x 15' 11" (5.18m x 4.85m)** (overall at widest points) Extensive range of high and low level units, work surfaces, 1.5 bowl single drainer stainless steel sink unit with mixer tap, Whirlpool 4 ring gas hob with Zanussi electric oven under and extractor fan over, integrated dishwasher, wine rack, breakfast bar, integrated fridge and freezer, part tiled walls, tiled floor to kitchen area, wood flooring to dining area, understairs storage and bespoke built in drawers, mahogany effect uPVC double glazed patio doors to rear

**FAMILY ROOM 13' 8" x 8' 1" (4.17m x 2.46m)** Laminate wood effect floor

**UTILITY ROOM 13' 4" x 8' 0" (4.06m x 2.44m)** Range of high and low level units, work surfaces, single drainer stainless steel sink unit with mixer tap, plumbed for washing machine, tiled floor, part tiled walls, concealed gas fired boiler, uPVC double glazed door to rear

**CLOAKROOM** White suite comprising low flush wc, pedestal wash hand basin with splash tiling, tiled floor, extractor fan







**1ST FLOOR LANDING** Velux window, extensive range of built in storage, shelving and hanging space

**BEDROOM 12' 8" x 9' 10" (3.86m x 3m)** Wall to wall range of built in robes and storage, access to roof space

**ENSUITE** White suite comprising low flush wc, vanity unit with storage, fully tiled shower cubicle, chrome heated towel rail, fully tiled walls, tiled floor, panelled ceiling with low voltage spots and extractor fan

**BEDROOM 12' 10" x 8' 8" (3.91m x 2.64m)** Built in robes and storage

**BEDROOM 14' 2" x 8' 1" (4.32m x 2.46m)**

**BEDROOM 9' 8" x 7' 10" (2.95m x 2.39m)**

**BATHROOM** White suite comprising panelled bath with mixer tap and telephone hand shower, low flush wc, pedestal wash hand basin, walk in shower cubicle with rainwater shower, chrome heated towel rails, fully tiled walls, tiled floor, low voltage spots, access to roof space

**OUTSIDE** Tarmac driveway parking to front with parking for two cars along with flowerbeds and boundary wall. Delightful enclosed and private level rear garden in lawns with sheltered paved patio area and westerly aspect. Garden shed and boundary fence







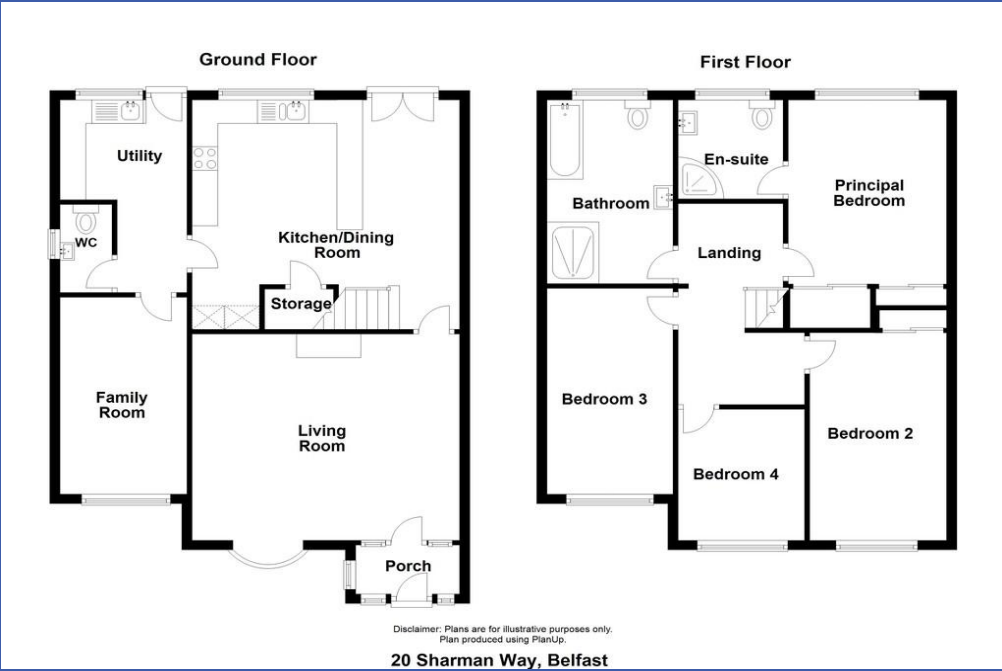




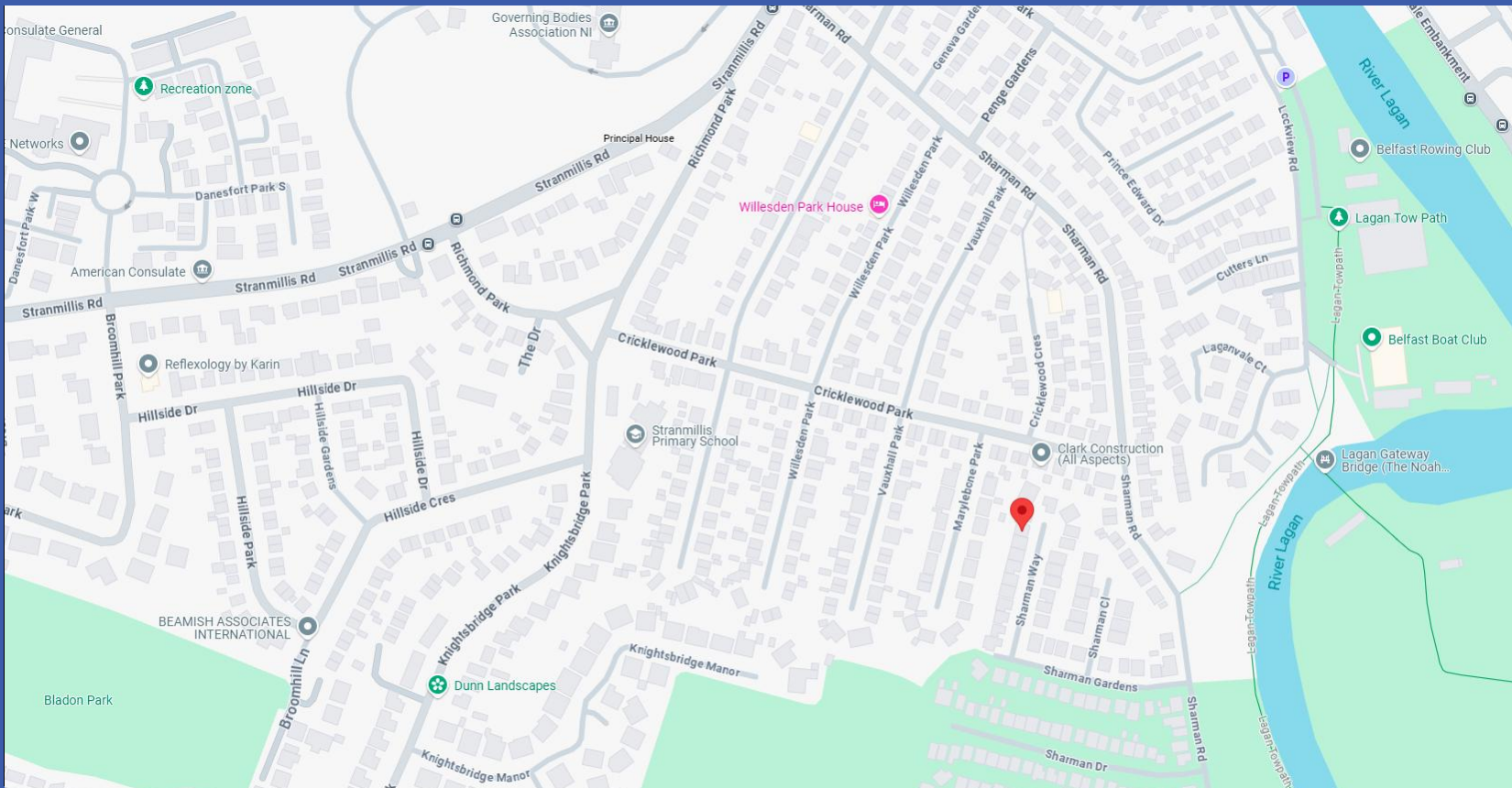












**Directions:**  
From Stranmillis Road, turn on to Sharman Road, turn right in to Sharman Gardens and Sharman Way is on the right

Score	Energy rating	Current	Potential
92+	A		
81-91	B		
69-80	C	71 C	75 C
55-68	D		
39-54	E		
21-38	F		
1-20	G		



Fetherstons Estate Agents for themselves and for the Vendors or Lessors of the property whose agents they are give notice that; i) these particulars are given without responsibility of Fetherstons or the Vendors or Lessors as a general outline only, for the guidance of prospective purchasers or tenants, and do not constitute the whole or any part of an offer or contract; ii) Fetherstons cannot guarantee the accuracy of any description, dimensions, references to condition, necessary permissions for the use and occupation and other details contained herein and any prospective purchasers or tenants should not rely on them as statements of representation of fact but must satisfy themselves by inspection or otherwise as to the accuracy of each of them; iii) no employee of Fetherstons has authority to make or give any representation or warranty or enter into any contract whatsoever in relation to the property; iv) VAT may be payable on the purchase price and / or rent, all figures are quoted exclusive of VAT, intending purchasers or tenants must satisfy themselves as to the applicable VAT position, if necessary by taking the appropriate professional advice; v) Fetherstons will not be liable in negligence or otherwise, for any loss arising from the use of these particulars; vi) Appliances not tested or verified.