

Approximate total area⁽¹⁾

707.83 ft²

65.76 m²

Reduced headroom

14.32 ft²

1.33 m²

(1) Excluding balconies and terraces

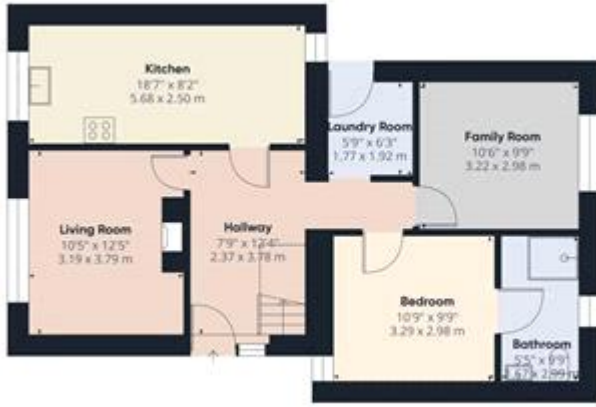
Reduced headroom

----- Below 5 ft/1.5 m

While every attempt has been made to ensure accuracy, all measurements are approximate, not to scale. This floor plan is for illustrative purposes only.

Calculations were based on RICS IPMS 3C standard. Please note that calculations were adjusted by a third party and therefore may not comply with RICS IPMS 3C.

GIRAFFE360



Plan 0



Approximate total area*

120.00 m²

1290.00 sq. ft.

1.000.00

1.000.00

1.000.00

1.000.00

1.000.00

1.000.00

1.000.00

1.000.00

1.000.00

1.000.00

1.000.00

1.000.00

1.000.00

1.000.00



Plan 1



Approximate total area*

120.00 m²

1290.00 sq. ft.

1.000.00

1.000.00

1.000.00

1.000.00

1.000.00

1.000.00

1.000.00

1.000.00

1.000.00

1.000.00

1.000.00

1.000.00



Plan 2



Plan 3



Approximate total area*

120.00 m²

1290.00 sq. ft.

1.000.00

1.000.00

1.000.00

1.000.00

1.000.00

1.000.00

1.000.00

1.000.00

1.000.00

1.000.00

1.000.00

1.000.00

1.000.00

1.000.00



Floor 0



Floor 1



Approximate total area
 1,000 sq ft
 1,000 sq ft

10/10/2020

Energy Efficiency Rating

	Current	Potential
Very energy efficient - lower running costs		
(92-100) A		
(81-91) B		
(69-80) C	71	72
(55-68) D		
(39-54) E		
(21-38) F		
(1-20) G		

Viewing by appointment only
 Best Lets & Sales NI - Head Office
 128 Main Street, Larne, County Antrim BT40 1RG
 Tel: 02828580400 Email: enquiries@bestletsandsalesni.com Website:
<https://www.bestletsandsalesni.com/>

