


Ayrshire View, Lisburn, County Down, BT28

Asking Price: £199,950
Freehold

 **Reeds Rains**

reedsrains.co.uk

Ayrshire View, Lisburn, County Down, BT28

Asking Price: £199,950 Freehold

Council Tax Band:

EPC Rating: B

Mid-terraced 3-bedroom house featuring a charming garden. This property is ideal for first-time buyers or investors looking for a great opportunity. Located in a sought-after area with convenient access to local amenities and transport links. Don't miss out on this fantastic property!

Entrance Hall

Laminate flooring

WC

Low level WC, wash hand basin.

Living Room

12'6" x 11'8" (3.8m x 3.56m)

Laminate flooring

Kitchen/ Utility/ Dining

15'8" x 14'7" (4.78m x 4.45m)

Stunning fitted range of high and low level units, laminate work tops, single drainer stainless steel sink unit, mixer tap, built-in gas hob and electric oven, integrated dishwasher/ fridge freezer, open to casual dining area with French doors to rear, tiled flooring.

Landing

Bedroom 1

15'9" x 9'8" (4.8m x 2.95m)

Panelling

Bedroom 2

12'7" x 10'10" (3.84m x 3.3m)

Bedroom 3

10'3" x 7'2" (3.12m x 2.18m)

Bathroom

White suite comprising panelled bath, wash hand basin, low level WC, wall and floor tiling.

Outside

Block pavior to front/ car parking spaces,

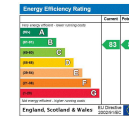
enclosed rear gardens in neat lawns, composite decking area.

The Reeds Rains branches at 350 Upper Newtownards Road, Ballyhackamore, Belfast, N Ireland BT4 3EX, 18 Main Street, Bangor, Co Down, N Ireland BT20 5AG, Somerset House, 240-242 Ormeau Road, Belfast, Co Antrim, N Ireland BT7 2FZ, 10 High Street, Carrickfergus, Co Antrim, N Ireland BT38 7AF, 8/8A Carrmonee Road, Glengormley, County Antrim, N Ireland BT36 6HN, 14/16 Market Street, Lisburn, County Antrim, N Ireland BT28 1AB and 2 Frances Street, Newtownards, County Down, N Ireland BT23 4JA are operated by Favscos NI Limited which is independently owned and operated under a Licence from Reeds Rains Limited.

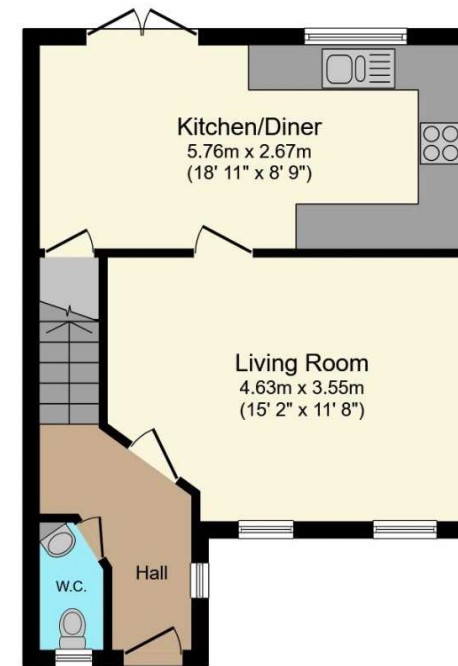
All Measurements
All Measurements are Approximate.

Laser Tape Clause
All measurements have been taken using a laser tape measure and therefore, may be subject to a small margin of error.

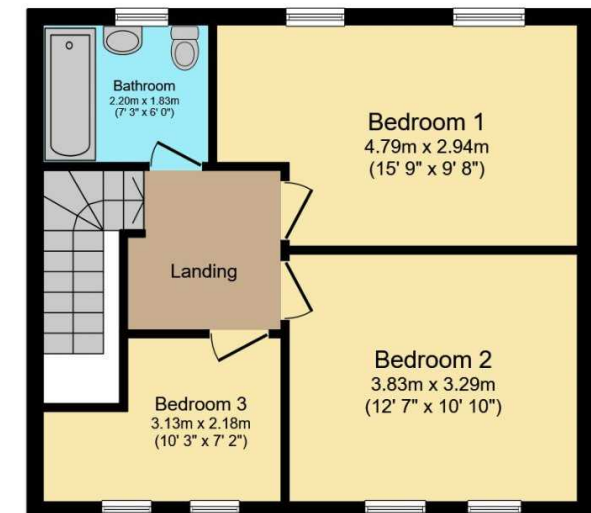
Floorplan Clause
Measurements are approximate. Not to Scale. For illustrative purposes only.



For full EPC please contact the branch.



Ground Floor



First Floor

Total floor area 84.0 m² (904 sq.ft.) approx

This floor plan is for illustrative purposes only. It is not drawn to scale. Any measurements, floor areas (including any total floor area), openings and orientation are approximate. No details are guaranteed, they cannot be relied upon for any purpose and they do not form part of any agreement. No liability is taken for any error, omission or misstatement. A party must rely upon its own inspection(s).
Powered by www.focalagent.com

We may refer you to recommended providers of ancillary services such as Conveyancing, Mortgages, Insurance and Surveying. We may receive a referral fee for recommending their services. You are not under any obligation to use the services of the recommended provider, which may also be an associated company of Reeds Rains.

Other important information which you will need to know about this property can be found at reedsrains.co.uk