

Gravelhill Road, Lisburn, County Down, BT27

Asking Price: £415,000

Freehold

 **Reeds Rains**

[reedsrains.co.uk](https://www.reedsrains.co.uk)

Gravelhill Road, Lisburn, County Down, BT27

Asking Price: £415,000 Freehold

Council Tax Band:

EPC Rating: TBC

Charming 4-bedroom detached house with a spacious garden in a sought-after location. This beautifully presented property boasts modern interiors, a stylish kitchen, and ample living spaces. Ideal for families seeking a peaceful retreat with convenient access to local amenities.

Reception Hall

Tiled flooring.

Living Room

11'5" x 10'11" (3.48m x 3.33m)

Feature stove -double fronted through to dining area.

Family Room

11'2" x 10'10" (3.4m x 3.3m)

Feature fireplace

Luxury Fitted Kitchen/ Dining With Island

22'7" x 15'4" (6.88m x 4.67m)

Stunning array of luxury fitted high and low level cabinets, quartz work tops, built-in coffee machine, island unit with ceramic hob unit, integrated wine cooler, over extractor fan,built-in electric ovens, inlaid ceramic sink unit, mixer tap, tiled flooring, open to casual dining area with feature double ended stove.

Utility Room

8'7" x 6'10" (2.62m x 2.08m)

Range of units, plumbed for washing machine, sink unit, tiled flooring.

Shower Room

Separate shower cubicle with controlled shower, wash hand basin, low level WC, tiled flooring.

Landing

Bedroom 1

11'2" x 10'10" (3.4m x 3.3m)

En-suite

Separate shower cubicle with controlled shower, wash hand basin, low level WC, tiled flooring.

Bedroom 2

10'11" x 9'10" (3.33m x 3m)

Built-in robes

Bedroom 3

11'7" x 10'11" (3.53m x 3.33m)

Bedroom 4

11'8" x 9'8" (3.56m x 2.95m)

Built-in robes

Bathroom

Comprising free standing panelled bath, wash hand basin, low level WC, separate shower cubicle with controlled shower, tiled flooring

Car Parking/ Driveway Spaces

Private Enclosed Patio

Laid in block pavior.

Detached garage

17'3" x 9'5" (5.26m x 2.87m)

Roller door. Light and power.

The Reeds Rains branches at 350 Upper Newtownards Road, Ballyhackamore, Belfast, N Ireland BT4 3EX, 18 Main Street, Bangor, Co Down, N Ireland BT20 5AG, Somerset House, 240-242 Ormeau Road, Belfast, Co Antrim, N Ireland BT7 2FZ, 10 High Street, Carrickfergus, Co Antrim, N Ireland BT38 7AF, 8/8A Carnmoney Road, Glengormley, County Antrim, N Ireland BT36 6HN, 14/16 Market Street, Lisburn, County Antrim, N Ireland BT28 1AB and 2 Frances Street, Newtownards, County Down, N Ireland BT23 4JA are operated by Favscos NI Limited which is independently owned and operated under a Licence from Reeds Rains Limited.

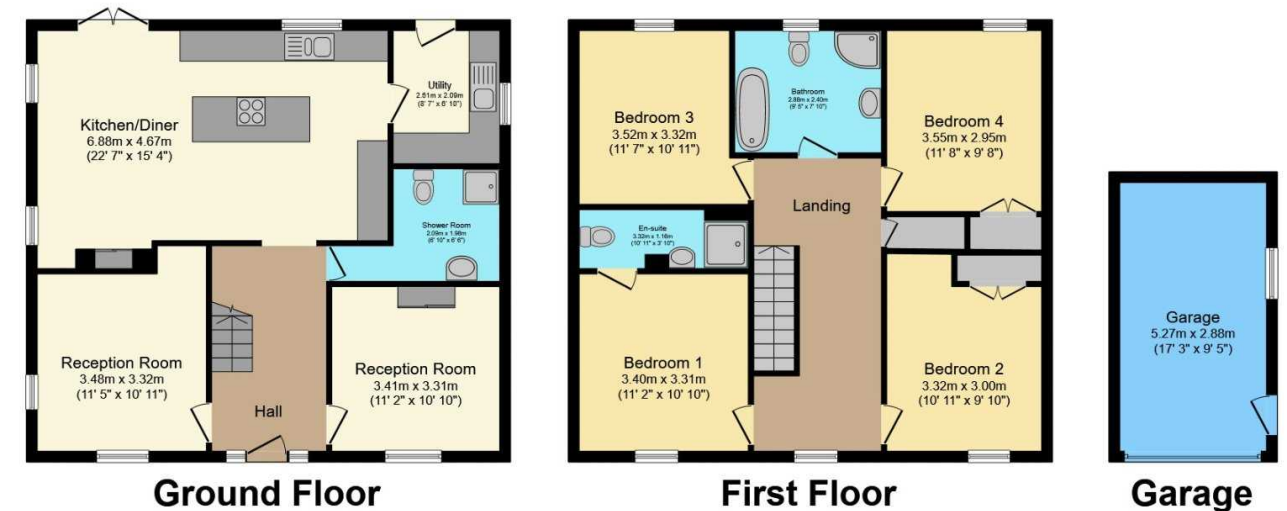
All Measurements
All Measurements are Approximate.

Laser Tape Clause
All measurements have been taken using a laser tape measure and therefore, may be subject to a small margin of error.

Floorplan Clause
Measurements are approximate. Not to Scale. For illustrative purposes only.

We may refer you to recommended providers of ancillary services such as Conveyancing, Mortgages, Insurance and Surveying. We may receive a referral fee for recommending their services. You are not under any obligation to use the services of the recommended provider, which may also be an associated company of Reeds Rains.

For full EPC please contact the branch.



Total floor area 164.8 m² (1,774 sq.ft.) approx

This floor plan is for illustrative purposes only. It is not drawn to scale. Any measurements, floor areas (including any total floor area), openings and orientation are approximate. No details are guaranteed, they cannot be relied upon for any purpose and they do not form part of any agreement. No liability is taken for any error, omission or misstatement. A party must rely upon its own inspection(s). Powered by www.focalagent.com

Other important information which you will need to know about this property can be found at reedsrains.co.uk