



THE JUNIPER

THE KEATING

Computer Visual



The Juniper & The Keating

The Juniper (with Sunroom) - 1120 sq ft approx. / (without Sunroom) - 1030 sq ft approx. / The Keating - 1140 sq ft approx.

The Juniper & The Keating

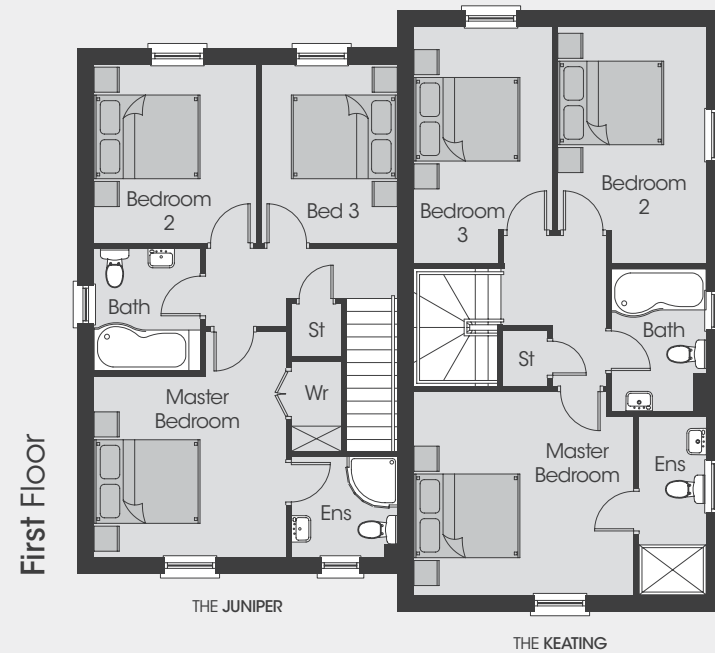
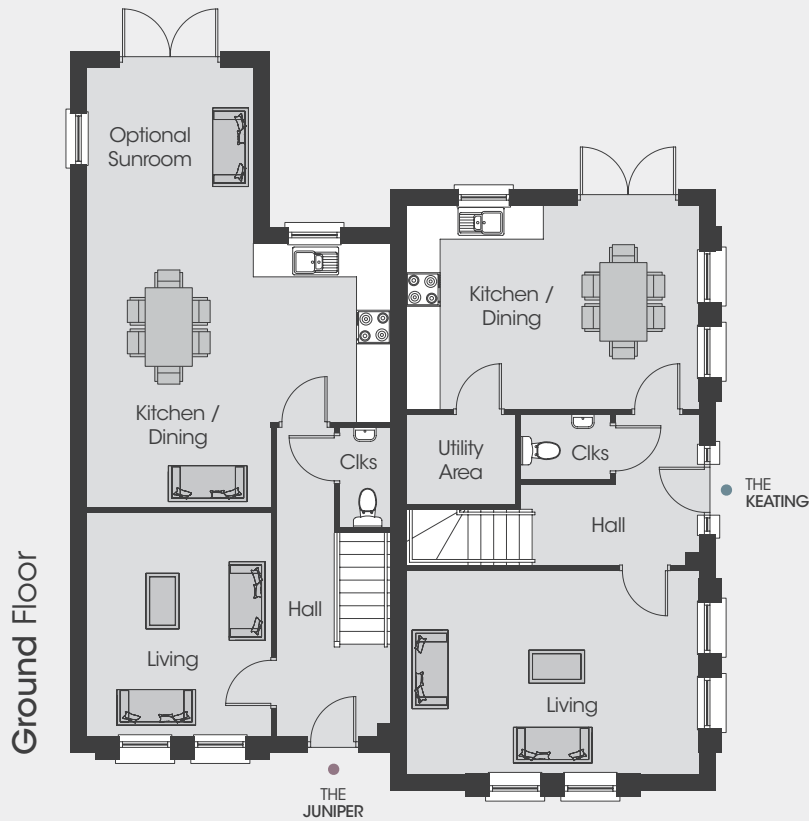
3 Bedroom Semi-Detached Home

Total Floor Areas – **The Juniper** (with Sunroom) - **1120 sq ft** approx.

The Juniper (without Sunroom) - **1030 sq ft** approx.

The Keating - **1140 sq ft** approx.

All dimensions are approximate and 3D computer generated images are for illustration purposes only, both of which may be subject to change.



Ground Floor – The Juniper

Entrance Hall	
Living	13'1" x 10'9"
Kitchen / Dining	17'10" x 15'6" <i>Max</i>
Optional Sunroom	9'9" x 9'4"
Cloakroom	5'10" x 5'11"

First Floor – The Juniper

Master Bedroom	11'3" x 10'7"
Ensuite	6'2" x 5'10"
Bedroom 2	10'5" x 9'6"
Bedroom 3	10'5" x 7'11"
Bathroom	7'2" x 6'2"

Ground Floor – The Keating

Entrance Hall	
Living	17'2" x 11'11"
Kitchen / Dining	17'2" x 11'11"
Utility Area	6'4" x 5'2"
Cloakroom	5'2" x 3'9"

First Floor – The Keating

Master Bedroom	12'11" x 11'11"
Ensuite	10'5" x 3'11"
Bedroom 2	13'11" x 8'8"
Bedroom 3	13'11" x 8'1"
Bathroom	8'4" x 5'6"