

## 6 Bridge Street , Lisburn, BT28 1XY

**£12,000 Per Annum**

Welcome to Bridge Street, Lisburn - a prime location for your next commercial venture! This property on Bridge Street offers a fantastic opportunity for those looking to establish or expand their business in a bustling area. Situated in the heart of Lisburn, this commercial property is sure to attract a steady flow of customers and clients.

With its prime location, this property is ideal for a range of businesses, from retail shops to offices or even a cozy cafe. The bustling atmosphere of Bridge Street ensures high visibility and foot traffic, providing an excellent platform for your business to thrive.

Imagine the possibilities of setting up your shop or office in this vibrant area - the convenience of being surrounded by other businesses, cafes, and shops, creating a dynamic and lively environment for both you and your customers.

Don't miss out on this incredible opportunity to establish your business in the heart of Lisburn. Take the first step towards your entrepreneurial dreams and make this commercial property on Bridge Street your own!

# 6 Bridge Street

, Lisburn, BT28 1XY



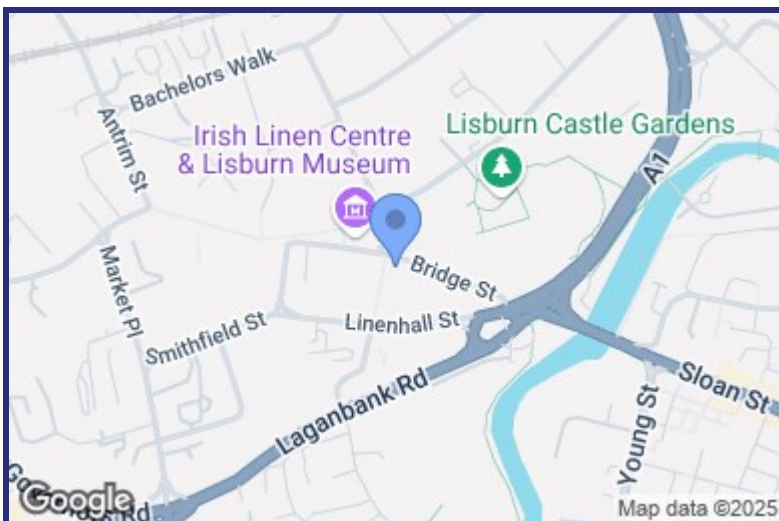
DESCRIPTION

SPECIFICATION

TERMS

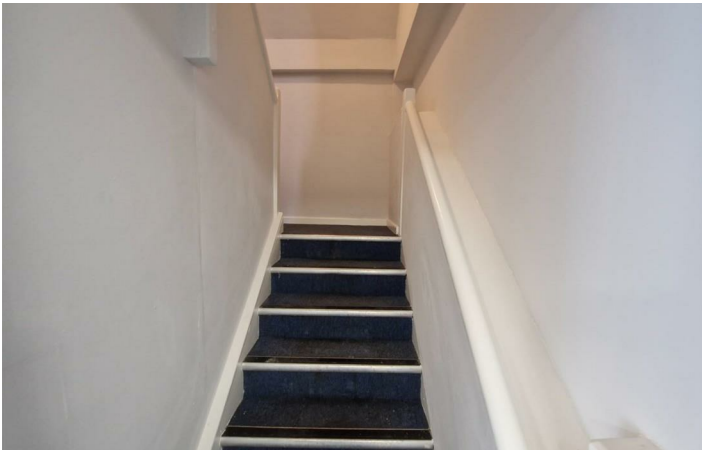
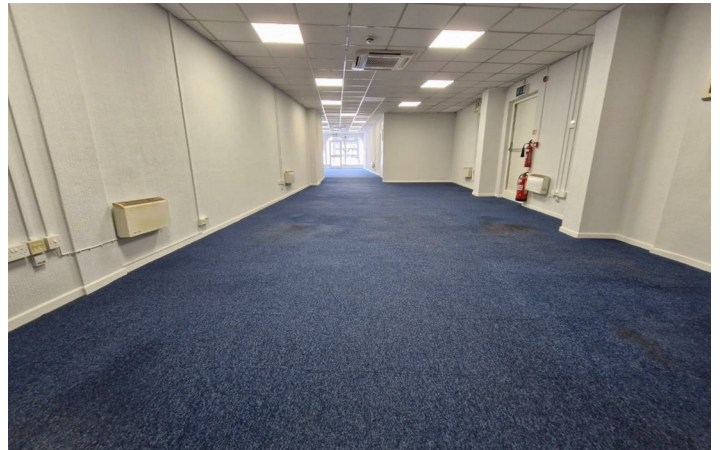
RATEABLE VALUE

VIEWING DETAILS/ FURTHER  
INFORMATION



## Energy Efficiency Rating

	Current	Potential
<i>Very energy efficient - lower running costs</i>		
(92 plus) <b>A</b>		
(81-91) <b>B</b>		
(69-80) <b>C</b>		
(55-68) <b>D</b>		
(39-54) <b>E</b>		
(21-38) <b>F</b>		
(1-20) <b>G</b>		
<i>Not energy efficient - higher running costs</i>		
<b>Northern Ireland</b>	EU Directive 2002/91/EC	



# Floor Plan



TOTAL FLOOR AREA: 2048 sq.ft. (190.3 sq.m.) approx.  
 Whilst every attempt has been made to ensure the accuracy of the floorplan contained herein, measurements of doors, windows, rooms and any other items are approximate and no responsibility is taken for any error, omission or mis-statement. This plan is for illustrative purposes only and should be used as such by any prospective purchaser. The services, systems and appliances shown have not been tested and no guarantee as to their operability or efficiency can be given.  
 Made with Metropix 6/2025

*We look forward to working with you...*



*We get there together*

Our experienced and trusted team have assisted 1000's of people with buying, selling and letting.



*We're here for you*

Client care is at the very heart of what we do. We will guide and support you every step of the way.



*Always close by*

With multiple offices and a leading marketing team, we will make sure that you get the very best result.

**Newry:**  
30 Monaghan Street, Newry, Co.Down, BT35 6AA  
T: 028 300 50633 E: newry@bradleyni.com

**Warrenpoint:**  
25 Duke Street, Warrenpoint, Co.Down, BT34 3JY  
T: 028 417 73777 E: warrenpoint@bradleyni.com

**Rostrevor:**  
14 Bridge Street, Rostrevor, Co.Down, BT34 3BG  
T: 028 417 39999 E: rostrevor@bradleyni.com

**Belfast:**  
55-59 Adelaide Street, Belfast, Co.Antrim, BT2 8FE  
T: 028 962 09909 E: belfast@bradleyni.com

These particulars, whilst believed to be accurate are set out as a general outline only for guidance and do not constitute any part of an offer or contract. Intending purchasers should not rely on them as statements of representation of fact, but must satisfy themselves by inspection or otherwise as to their accuracy. No person in this firms employment has the authority to make or give any representation or warranty in respect of the property.