

An outstanding development of modern family  
homes overlooking the Irish Sea with a backdrop  
of the majestic Mourne Mountains

# Sawhill Park

ANNALONG · COUNTY DOWN



**WILLIAM ROGERS**  
CONSTRUCTION

# Sawhill Park

**This superb new development is located on the outskirts of Annalong with the most wonderful back drop of the majestic Mourne Mountains, and looking out over the Irish Sea.**

Sawhill Park is surrounded by breathtaking scenes and enjoys all the beauty of countryside living yet has all local amenities very close at hand in the picturesque harbour village of Annalong.

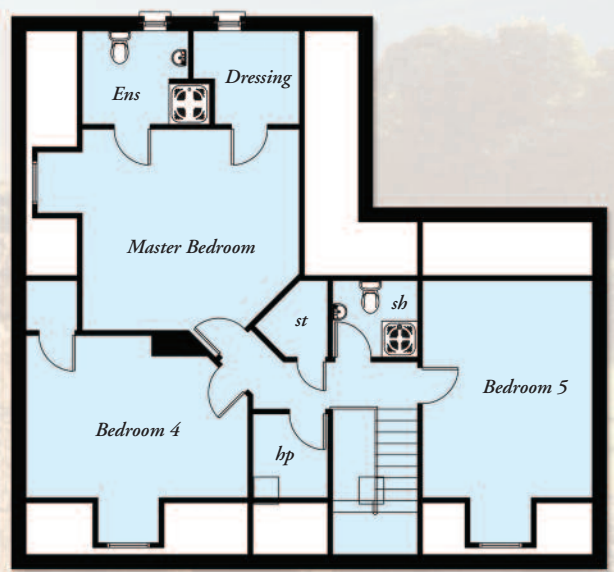
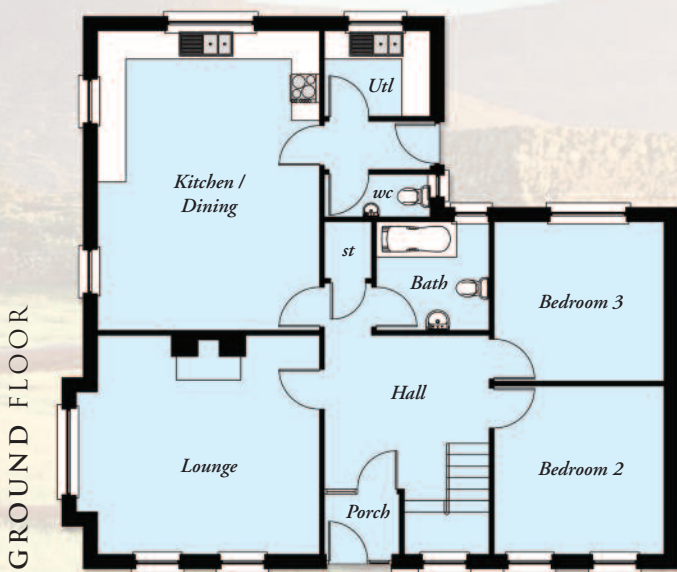
This new development is one of a kind - stylish and modern, it sets new standards in living space for this part of Co. Down. The excellent range of 5 house types have been designed to mirror a location where convenience sits comfortably in a beautiful out of town seclusion.



Sawhill Park will enhance the ambience of this breathtaking part of Co. Down, and will provide a classical look that will maintain its appeal for decades.

*Sawhill Park will be an address in which to live and relax in style - perfect for those who enjoy an active and not so active lifestyle.*

# House Type A



## GROUND FLOOR

Entrance Porch through to Hall	Bedroom 3..... 11'9" x 11'1"
Lounge (max)..... 15'5" x 15'3"	Utility..... 7'4" x 6'0"
Kitchen / Dining..... 20'9" x 15'5"	Bathroom
Bedroom 2..... 11'9" x 11'8"	WC

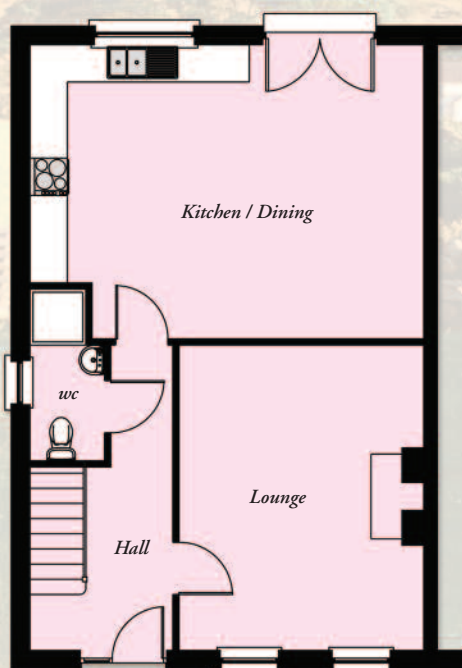
## FIRST FLOOR

Master Bedroom (max).. 15'1" x 14'0"	Bedroom 5 (max)..... 15'1" x 11'9"
Ensuite & Dressing	Shower Room
Bedroom 4 (max)..... 15'4" x 11'3"	

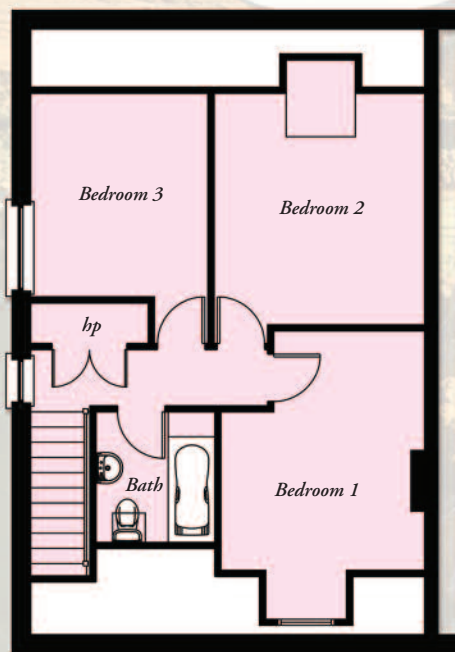
# House Type B



The architectural perspective is for illustration purposes only and as such, the elevation shown may vary from the actual finish on site. Plans are not to scale and all dimensions are approximate. E & O. E.



GROUND FLOOR



FIRST FLOOR

## GROUND FLOOR

Entrance Hall with separate WC  
 Lounge..... 16'1" x 12'9"  
 Kitchen / Dining..... 20'9" x 15'6"

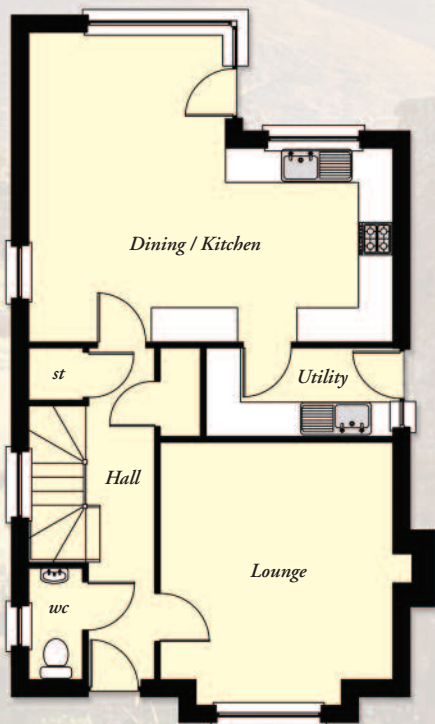
## FIRST FLOOR

Bedroom 1 (max)..... 12'7" x 10'9"  
 Bedroom 2..... 12'2" x 11'1"  
 Bedroom 3..... 12'2" x 9'4"  
 Bathroom

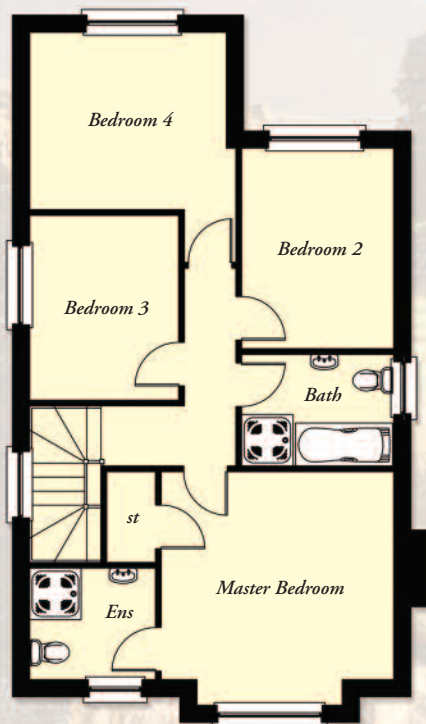
# House Type C



The architectural perspective is for illustration purposes only and as such, the elevation shown may vary from the actual finish on site. Plans are not to scale and all dimensions are approximate. E & O. E.



GROUND FLOOR



FIRST FLOOR

## GROUND FLOOR

- Entrance Hall with separate WC
- Lounge..... 13'6" x 13'4"
- Dining/Kitchen (max)....20'9" x 17'9"
- Utility..... 10'7" x 5'1"

## FIRST FLOOR

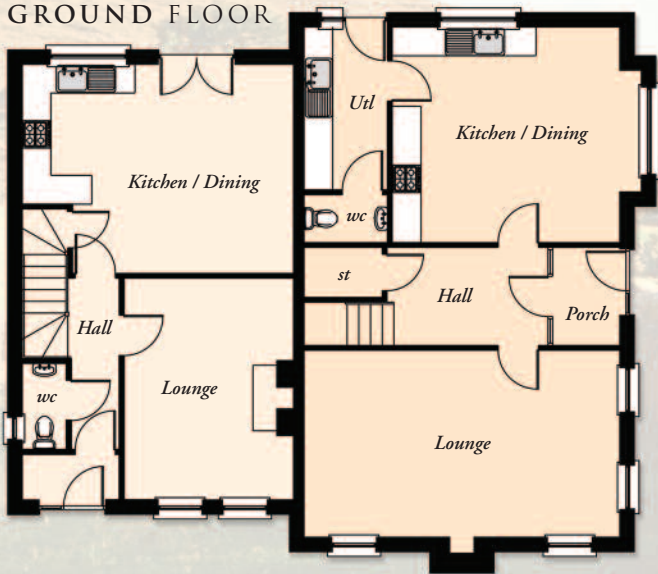
- Master Bedroom (max). 13'4" x 12'0"
- Ensuite
- Bedroom 2..... 11'5" x 8'6"
- Bedroom 3..... 10'7" x 8'7"
- Bedroom 4..... 11'9" x 10'2"
- Bathroom

# House Type D



The architectural perspective is for illustration purposes only and as such, the elevation shown may vary from the actual finish on site. Plans are not to scale and all dimensions are approximate. E & O. E.

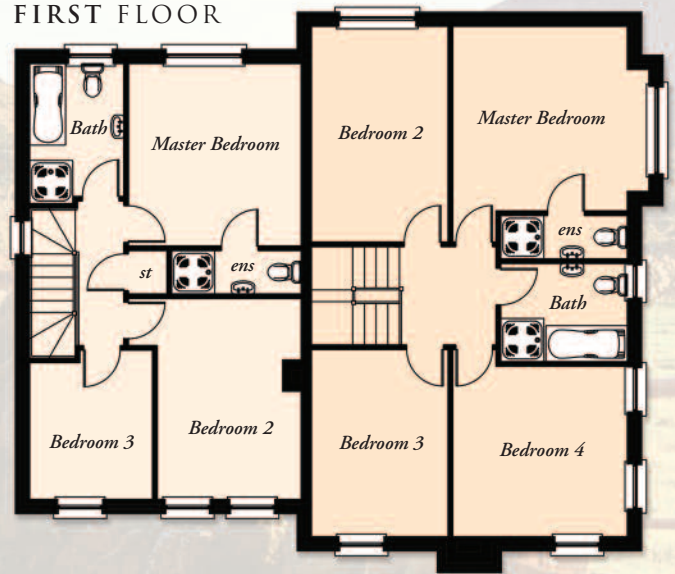
## GROUND FLOOR



### GROUND FLOOR

Entrance Hall with separate WC  
Lounge..... 15'2" x 11'7"  
Kitchen/Dining (max)... 18'6" x 14'4"

## FIRST FLOOR



### FIRST FLOOR

Master Bedroom (max). 12'6" x 11'9"  
Ensuite  
Bedroom 2..... 13'9" x 9'9"  
Bedroom 3..... 10'3" x 8'4"  
Bathroom

### GROUND FLOOR

Entrance Porch through to Hall  
Lounge..... 21'7" x 12'9"  
Kitchen/Dining (max)... 15'7" x 14'9"  
Utility..... 11'2" x 5'9"  
WC

### FIRST FLOOR

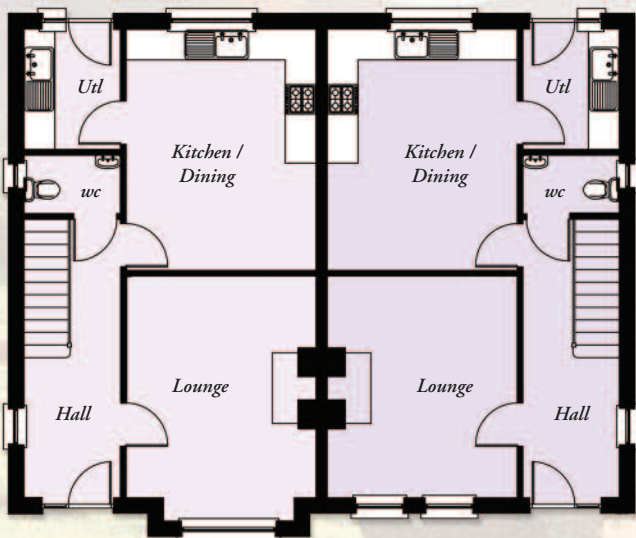
Master Bedroom (max). 12'7" x 12'0"  
Ensuite  
Bedroom 2..... 14'9" x 9'4"  
Bedroom 3..... 12'9" x 9'4"  
Bedroom 4..... 12'0" x 11'6"  
Bathroom

# House Type F

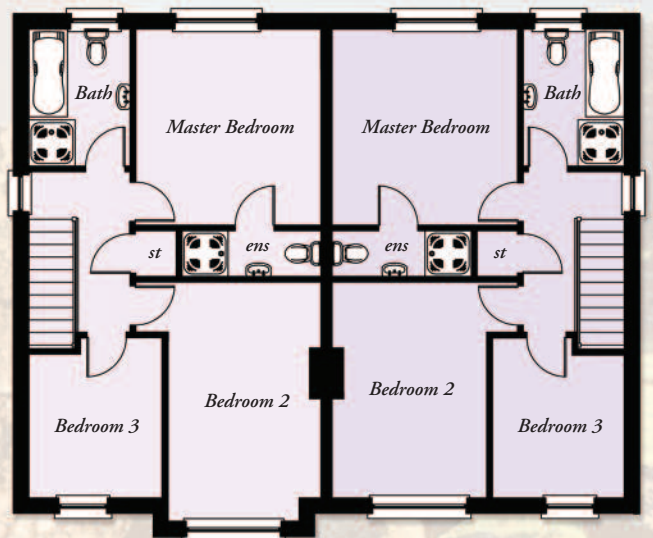


The architectural perspective is for illustration purposes only and as such, the elevation shown may vary from the actual finish on site. Plans are not to scale and all dimensions are approximate. E & O. E.

## GROUND FLOOR



## FIRST FLOOR



### GROUND FLOOR

### GROUND FLOOR

### FIRST FLOOR

### FIRST FLOOR

Entrance Hall with separate WC  
 Lounge (plus bay)..... 14'1" x 12'1"  
 Kitchen / Dining..... 15'4" x 12'1"  
 Utility..... 7'7" x 6'2"








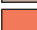
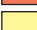
Entrance Hall with separate WC  
 Lounge..... 14'1" x 12'1"  
 Kitchen / Dining..... 15'4" x 12'1"  
 Utility..... 7'7" x 6'2"

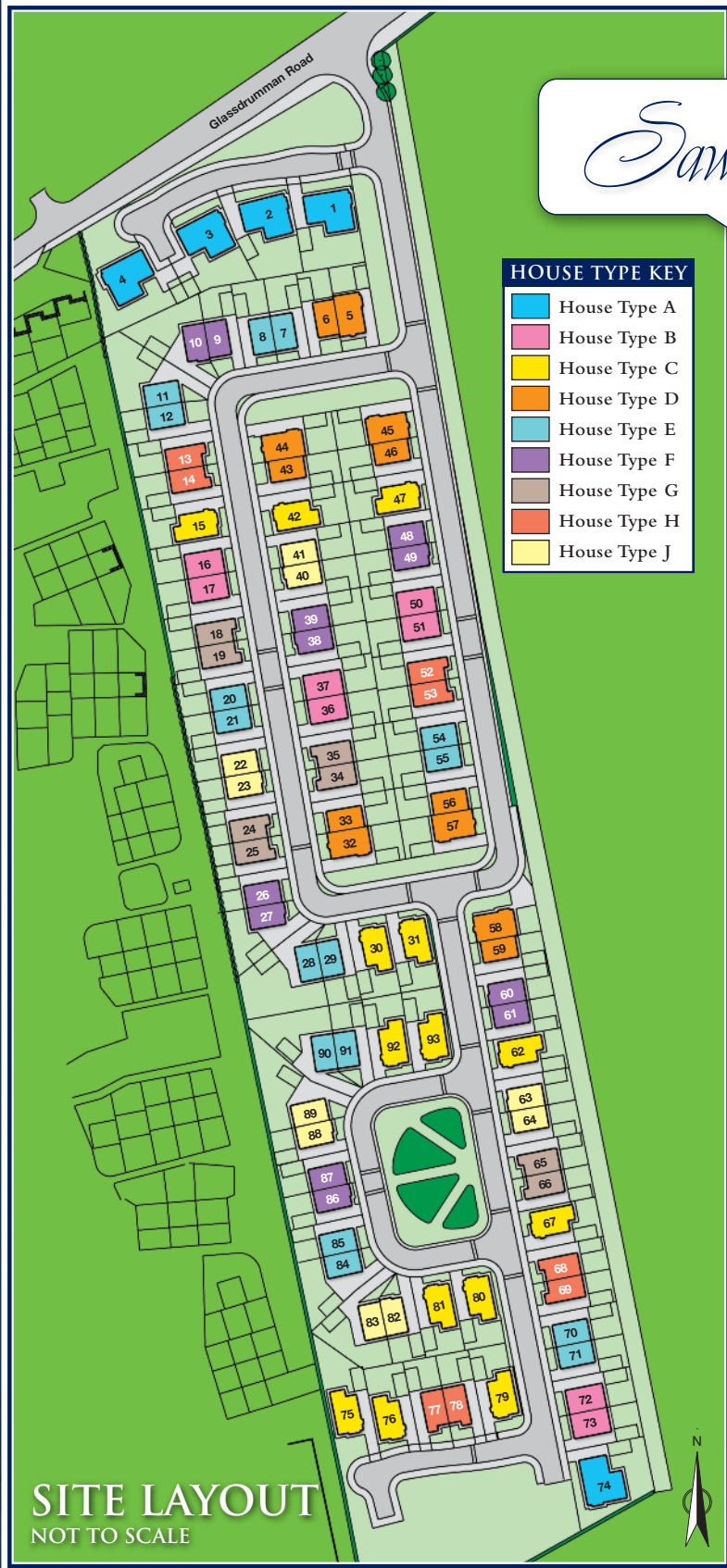
Master Bedroom..... 12'6" x 11'9"  
 Ensuite  
 Bedroom 2 (plus bay)..... 13'9" x 9'9"  
 Bedroom 3..... 10'3" x 8'4"  
 Bathroom

Master Bedroom..... 12'6" x 11'9"  
 Ensuite  
 Bedroom 2..... 13'9" x 9'9"  
 Bedroom 3..... 10'3" x 8'4"  
 Bathroom

# Sawhill Park

## HOUSE TYPE KEY

	House Type A
	House Type B
	House Type C
	House Type D
	House Type E
	House Type F
	House Type G
	House Type H
	House Type J



**SITE LAYOUT**  
NOT TO SCALE



**LOCATION MAP**  
NOT TO SCALE

JOINT SELLING AGENTS

## J. F. Speers & Son

Auctioneers | Valuers | Estate Agents

39 Greencastle Street, Kilkeel

Tel: **028 4176 2212**

Tel: **028 4176 2262**

[www.jfspeersandson.co.uk](http://www.jfspeersandson.co.uk)



58 Main Street, Newcastle

Tel: **028 4372 7222**

Tel: **0845 222 1100**

[www.propertydirections.com](http://www.propertydirections.com)

DEVELOPER



**WILLIAM ROGERS**  
CONSTRUCTION

Tel: 028 4376 7555

[www.williamrogersconstruction.co.uk](http://www.williamrogersconstruction.co.uk)

ARCHITECT



Tel: 028 4176 9748

Mob: 07803 177 197

Whilst we endeavour to make our sales information accurate and reliable, they should not be relied upon as statements or representations of fact and do not constitute any part of an offer or contract. The vendor does not make or give, and neither the selling agent nor any person in their employment has any authority to make or give any representation or warranty in relation to the property. 3D illustrations and photographs used are for illustrative purposes only.

Designed and published by:

**BLOCK**  
creative property marketing

Tel: 028 9077 9076  
Email: [design@blockcpm.com](mailto:design@blockcpm.com)