



# LAGAN MEWS APARTMENTS

HILLSBOROUGH ROAD  
LISBURN







**GROUND FLOOR**



**LAGAN MEWS APARTMENTS**

HILLSBOROUGH ROAD  
LISBURN





**FIRST FLOOR**



**LAGAN MEWS APARTMENTS**

HILLSBOROUGH ROAD  
LISBURN





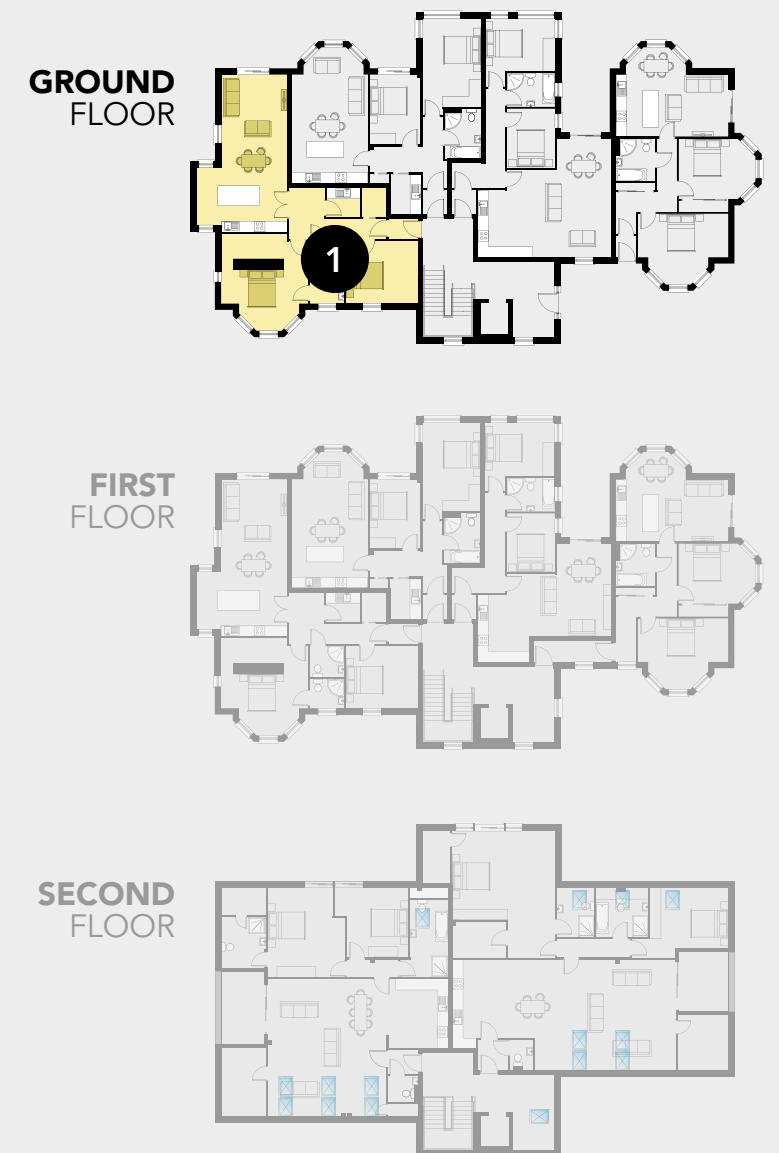
**SECOND  
FLOOR**

# APARTMENT 1

## GROUND FLOOR



TOTAL FLOOR AREA:  
**1,073 FT<sup>2</sup>**



**LAGAN MEWS  
APARTMENTS**

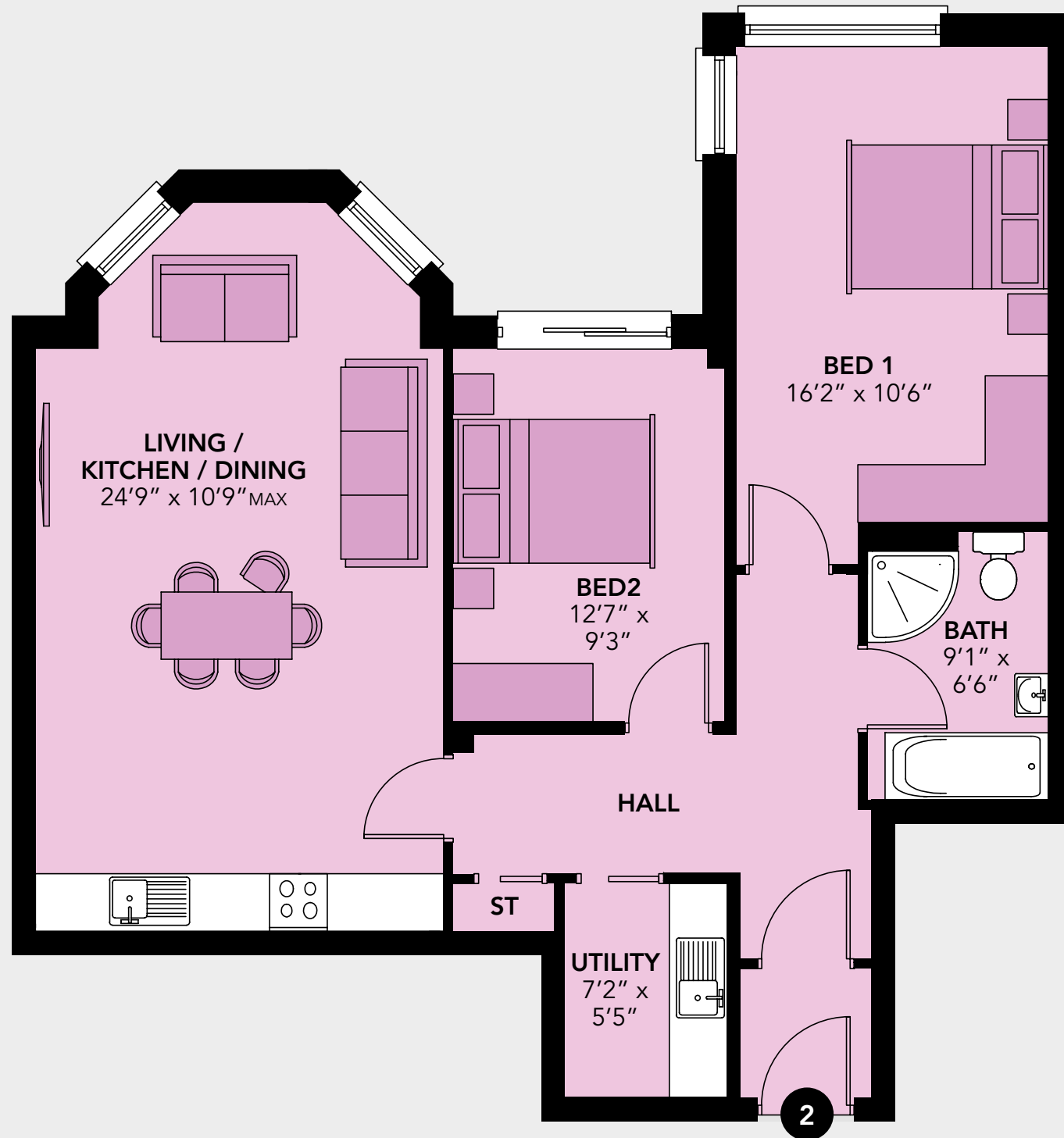
HILLSBOROUGH ROAD  
LISBURN

TEMPLETON  
ROBINSON

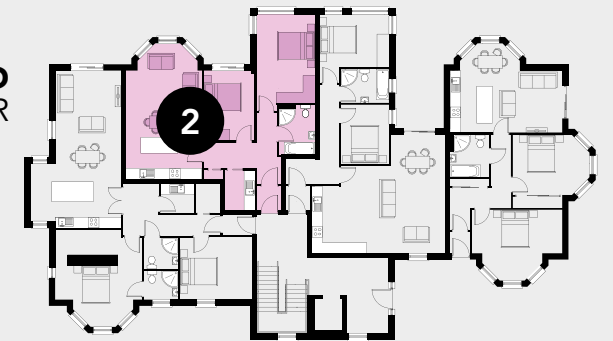
**WGK Homes**

# APARTMENT 2

## GROUND FLOOR



GROUND FLOOR



FIRST FLOOR



SECOND FLOOR



TOTAL FLOOR AREA:  
**875 FT<sup>2</sup>**

TEMPLETON  
ROBINSON

**WGK Homes**

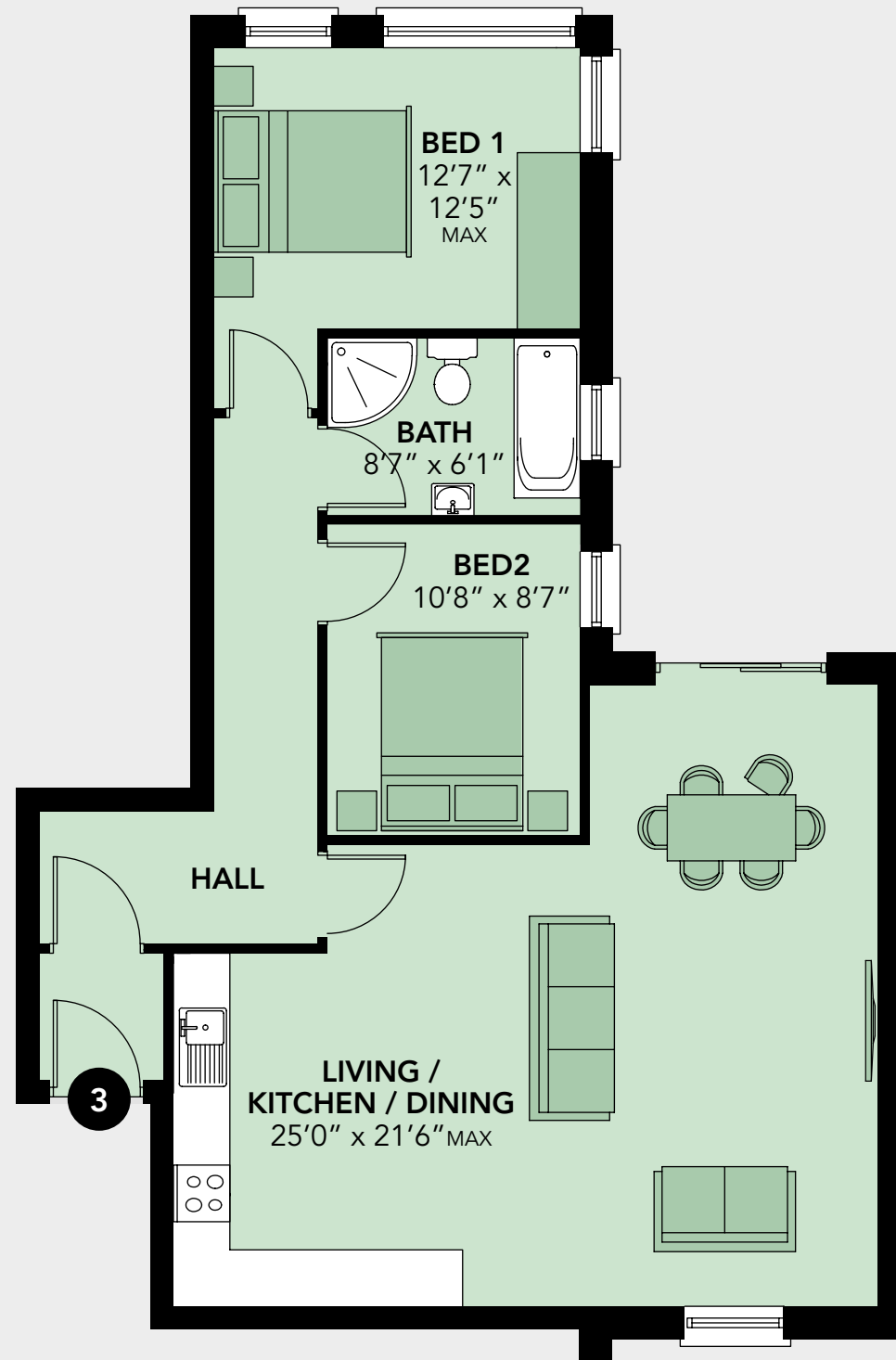


**LAGAN MEWS  
APARTMENTS**

HILLSBOROUGH ROAD  
LISBURN

# APARTMENT 3

## GROUND FLOOR



GROUND FLOOR



FIRST FLOOR



SECOND FLOOR



TOTAL FLOOR AREA:  
**850 FT<sup>2</sup>**

TEMPLETON  
ROBINSON

**WGK Homes**



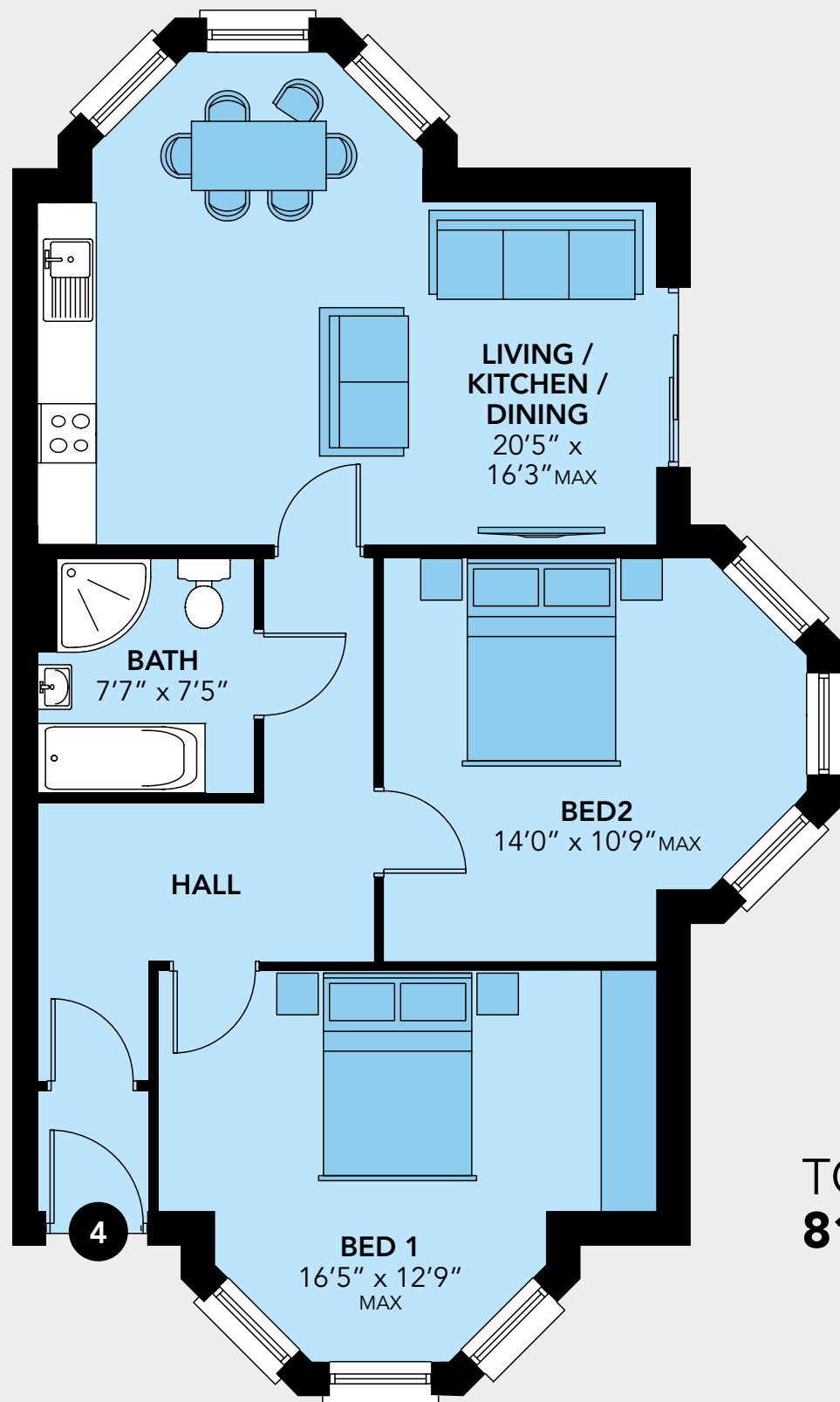
**LAGAN MEWS  
APARTMENTS**

HILLSBOROUGH ROAD  
LISBURN



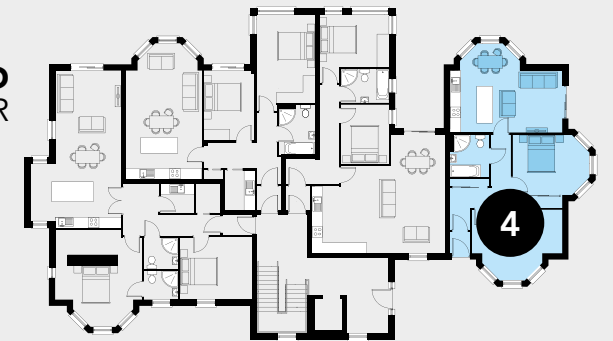
# APARTMENT 4

## GROUND FLOOR



TOTAL FLOOR AREA:  
**819 FT<sup>2</sup>**

GROUND FLOOR



FIRST FLOOR



SECOND FLOOR



**LAGAN MEWS  
APARTMENTS**

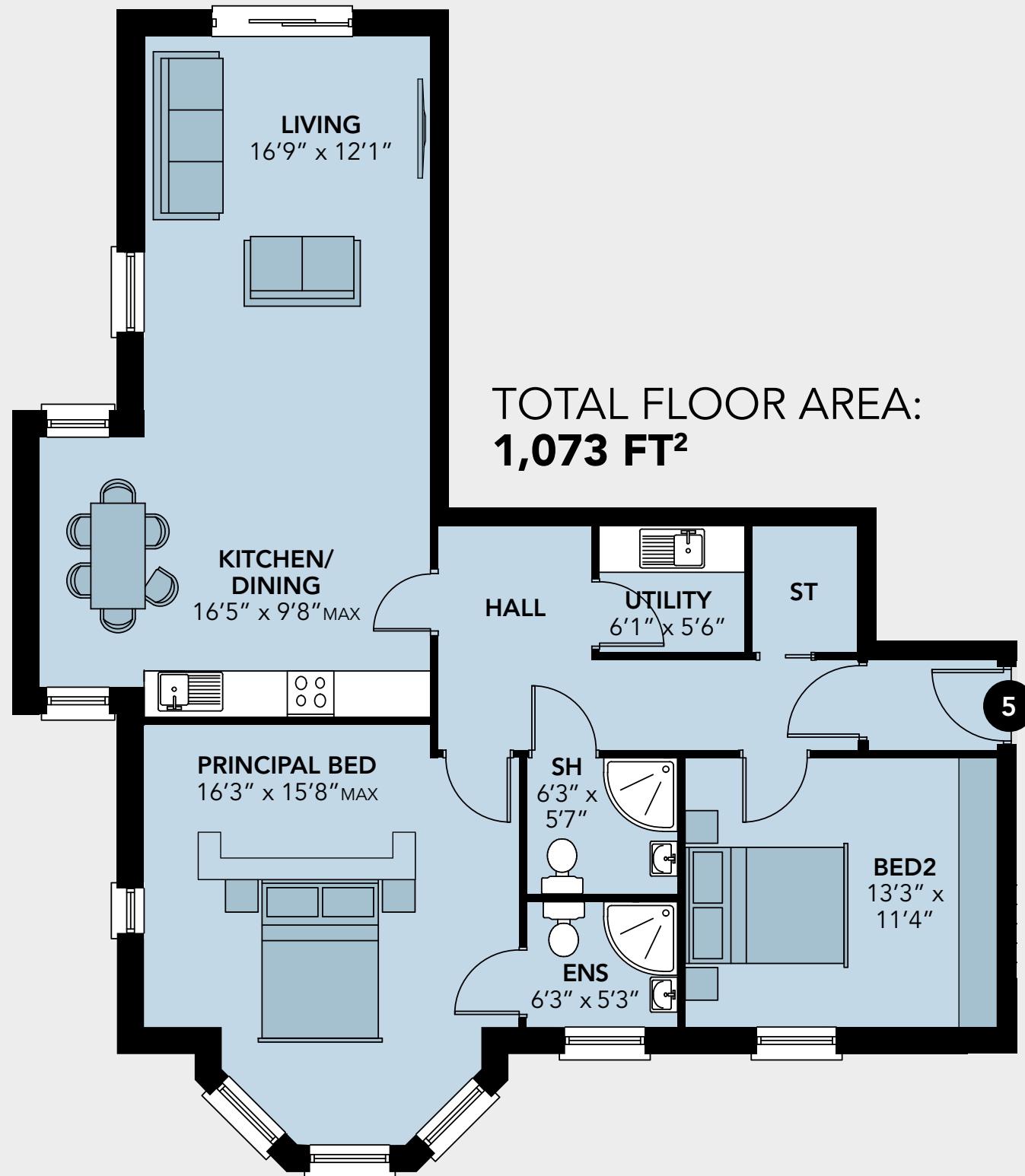
HILLSBOROUGH ROAD  
LISBURN

TEMPLETON  
ROBINSON

**WGK Homes**

# APARTMENT 5

## FIRST FLOOR

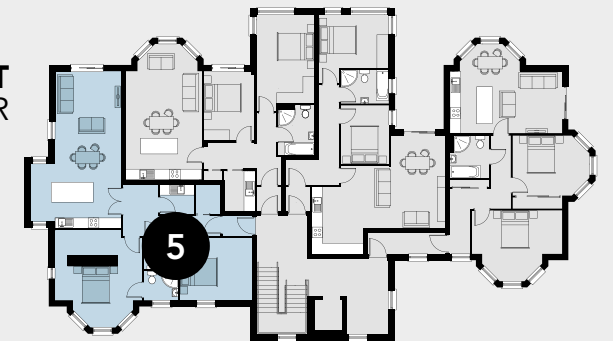


TOTAL FLOOR AREA:  
**1,073 FT<sup>2</sup>**

GROUND  
FLOOR



FIRST  
FLOOR



SECOND  
FLOOR



**LAGAN MEWS  
APARTMENTS**

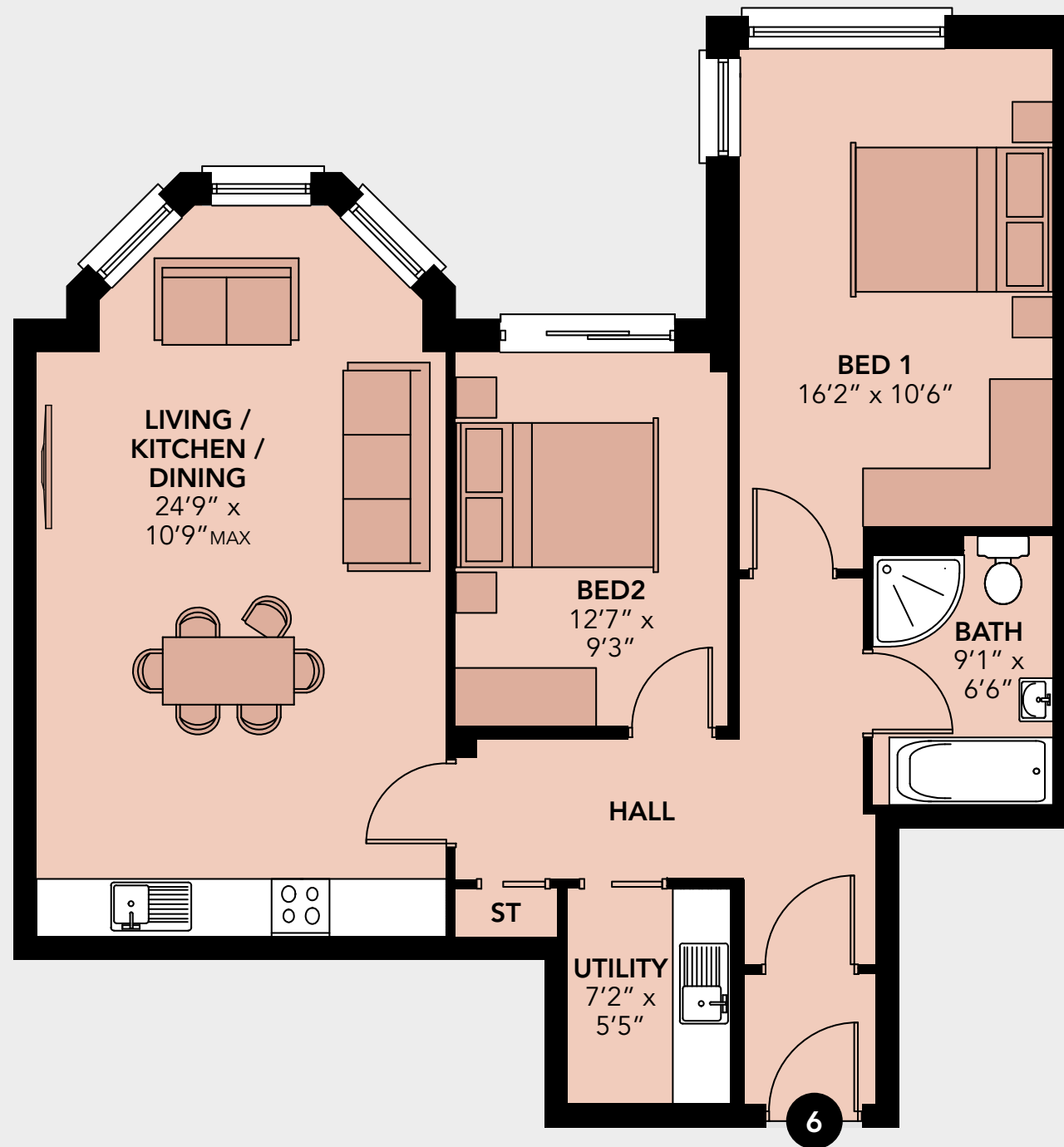
HILLSBOROUGH ROAD  
LISBURN

TEMPLETON  
ROBINSON

**WGK Homes**

# APARTMENT 6

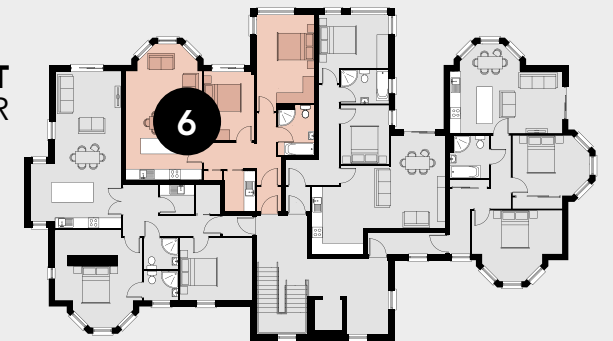
## FIRST FLOOR



GROUND FLOOR



FIRST FLOOR



SECOND FLOOR



TOTAL FLOOR AREA:  
**875 FT<sup>2</sup>**

TEMPLETON  
ROBINSON

**WGK Homes**

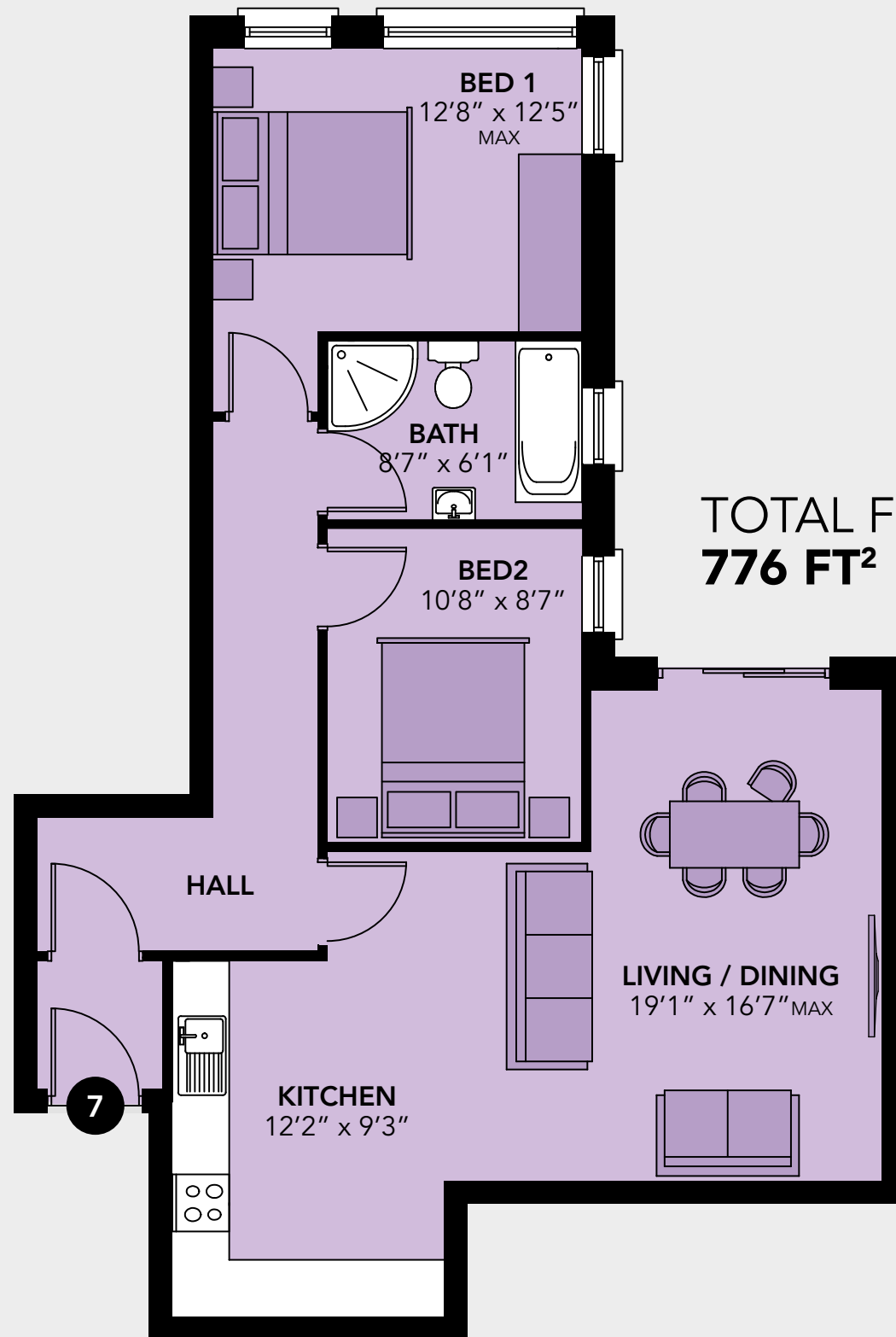


**LAGAN MEWS  
APARTMENTS**

HILLSBOROUGH ROAD  
LISBURN

# APARTMENT 7

## FIRST FLOOR

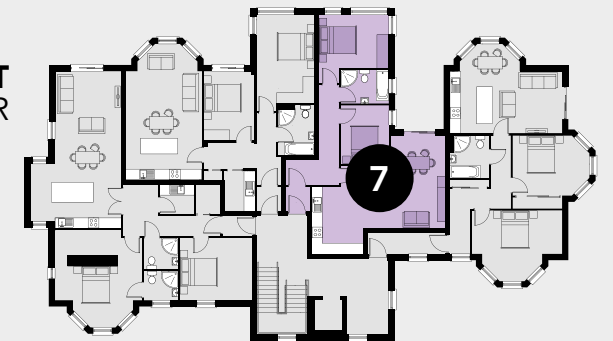


TOTAL FLOOR AREA:  
**776 FT<sup>2</sup>**

GROUND FLOOR



FIRST FLOOR



SECOND FLOOR



**LAGAN MEWS  
APARTMENTS**

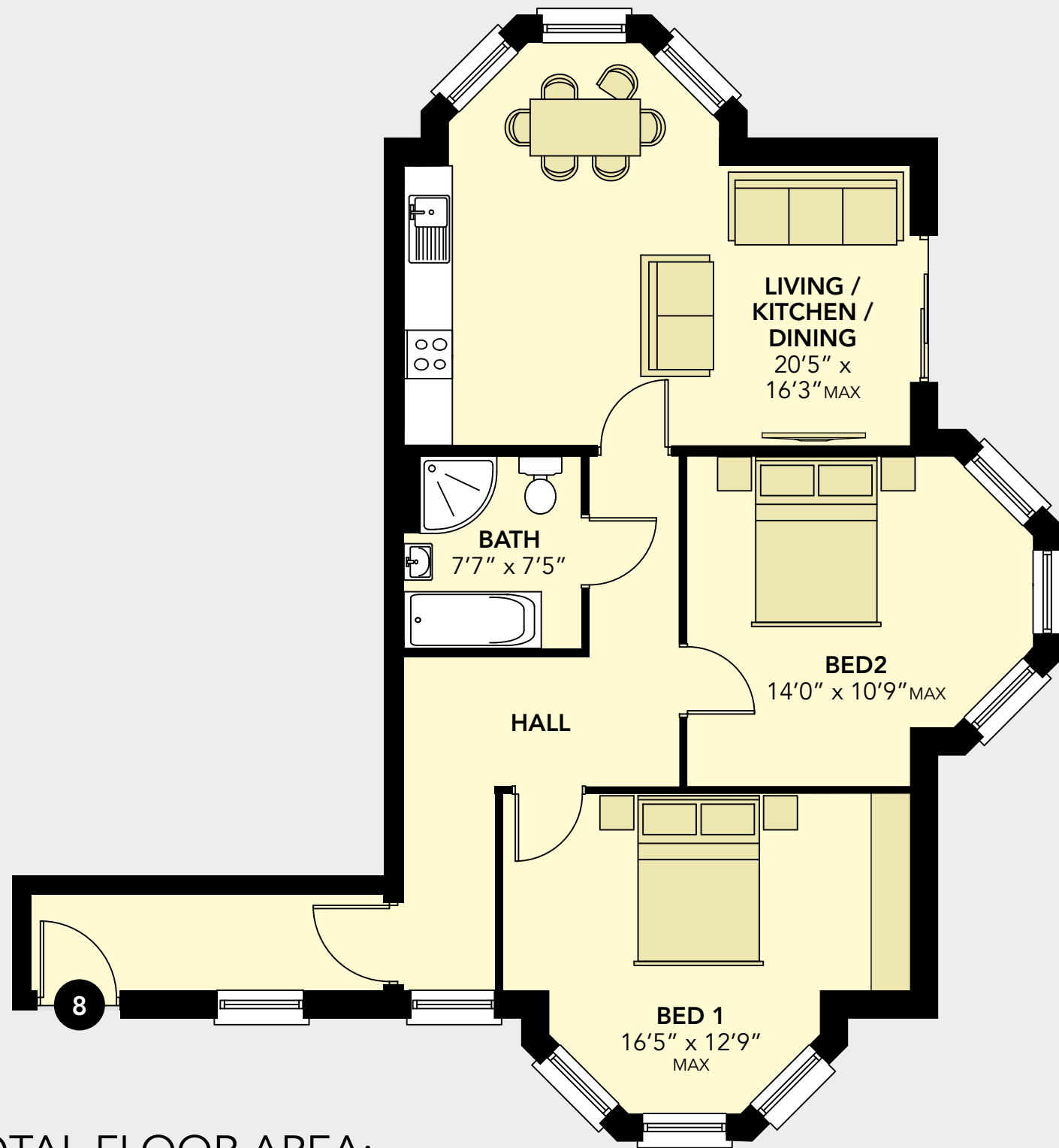
HILLSBOROUGH ROAD  
LISBURN

TEMPLETON  
ROBINSON

**WGK Homes**

# APARTMENT 8

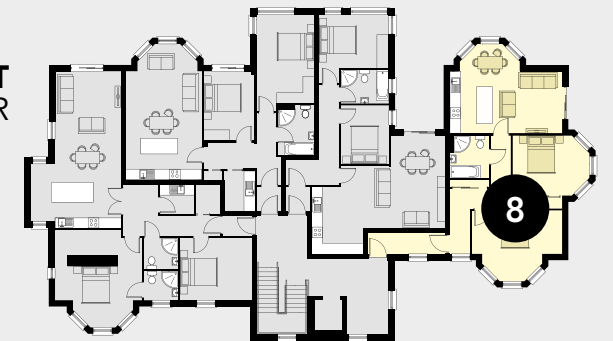
## FIRST FLOOR



GROUND FLOOR



FIRST FLOOR



SECOND FLOOR



TOTAL FLOOR AREA:  
**882 FT<sup>2</sup>**

TEMPLETON  
ROBINSON

**WGK Homes**

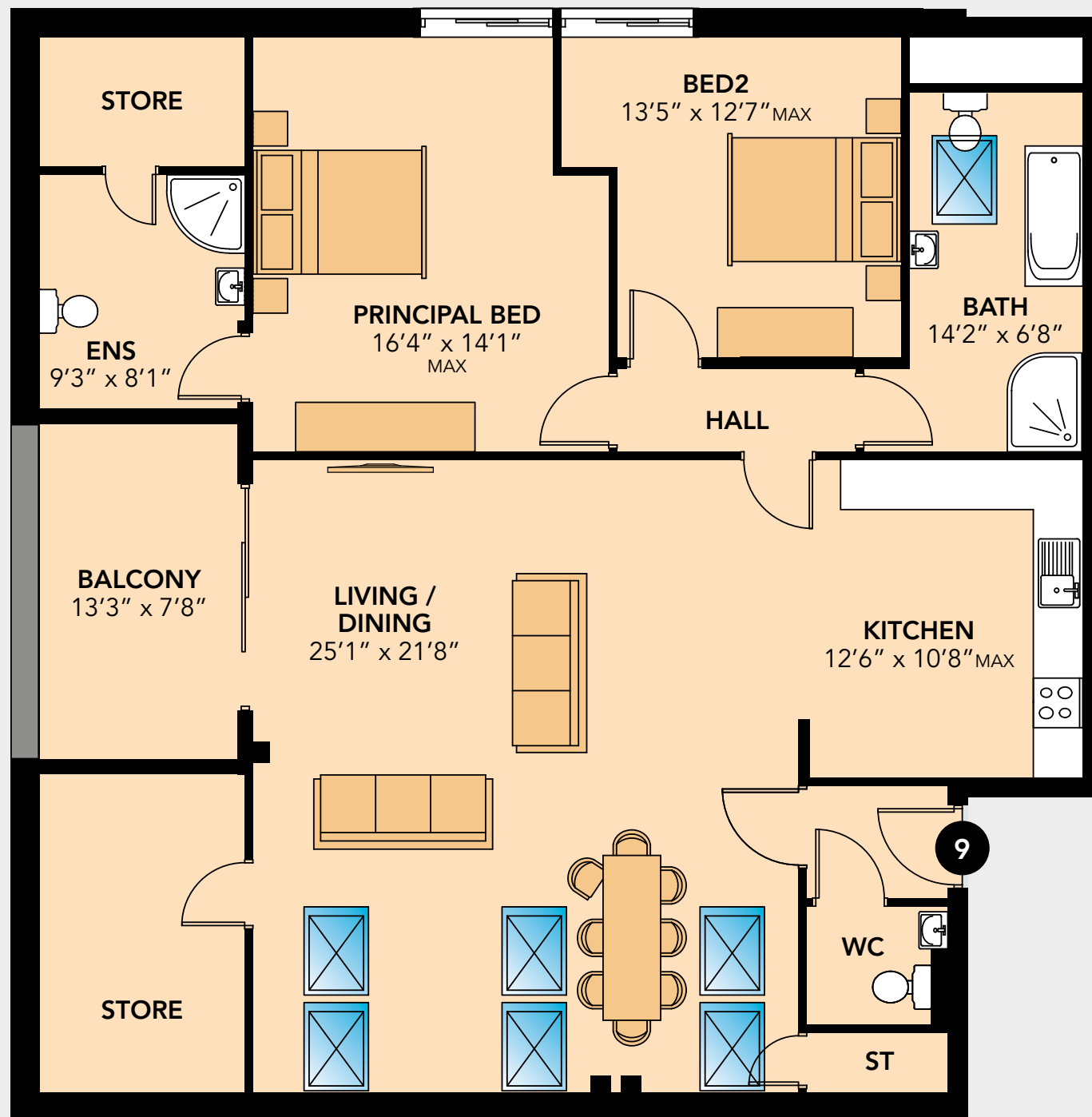


**LAGAN MEWS  
APARTMENTS**

HILLSBOROUGH ROAD  
LISBURN

# PENTHOUSE 9

## SECOND FLOOR



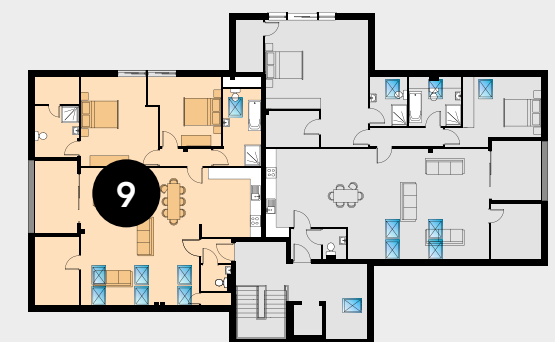
GROUND FLOOR



FIRST FLOOR



SECOND FLOOR



TOTAL FLOOR AREA:  
**1,526 FT<sup>2</sup>**

TEMPLETON  
ROBINSON

**WGK Homes**

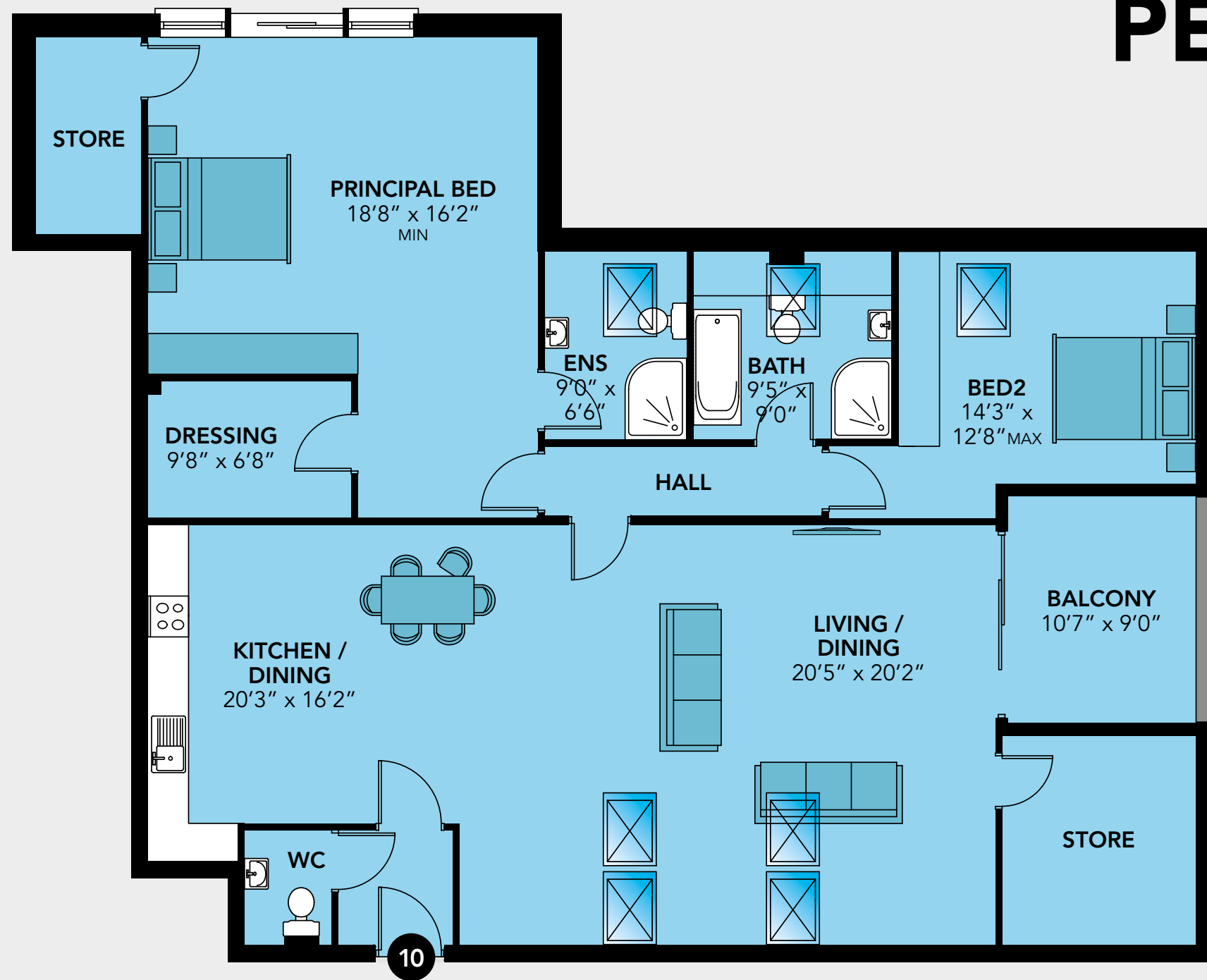


**LAGAN MEWS  
APARTMENTS**

HILLSBOROUGH ROAD  
LISBURN

# PENTHOUSE 10

## SECOND FLOOR



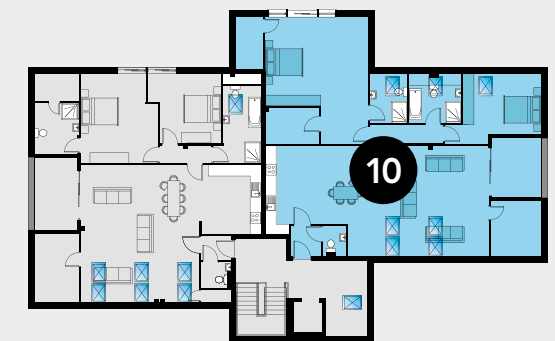
GROUND FLOOR



FIRST FLOOR



SECOND FLOOR



TOTAL FLOOR AREA:  
**1,775 FT<sup>2</sup>**

TEMPLETON  
ROBINSON

**WGK Homes**



**LAGAN MEWS  
APARTMENTS**

HILLSBOROUGH ROAD  
LISBURN

Not to scale



RIVER  
LAGAN

LAGAN VILLAS

LAGAN MEWS  
APARTMENTS  
APARTMENTS 1-10

HILLSBOROUGH ROAD

PREMIER  
INN



**LAGAN MEWS  
APARTMENTS**

HILLSBOROUGH ROAD  
LISBURN



Not to scale



**LAGAN VILLAS**

**LAGAN MEWS APARTMENTS**

APARTMENTS 1-10

PREMIER INN

HILLSBOROUGH ROAD



**LAGAN MEWS APARTMENTS**

HILLSBOROUGH ROAD  
LISBURN

Not to scale



# LAGAN MEWS APARTMENTS

HILLSBOROUGH ROAD  
LISBURN



# LAGAN MEWS APARTMENTS

HILLSBOROUGH ROAD  
LISBURN



Not to scale




**LAGAN MEWS APARTMENTS**  
HILLSBOROUGH ROAD  
LISBURN



**LAGAN MEWS APARTMENTS**  
HILLSBOROUGH ROAD  
LISBURN



TEMPLETON  
ROBINSON

**WGK Homes**



# LAGAN MEWS APARTMENTS

HILLSBOROUGH ROAD  
LISBURN



TEMPLETON  
ROBINSON

**WGK Homes**



# LAGAN MEWS APARTMENTS

HILLSBOROUGH ROAD  
LISBURN



TEMPLETON  
ROBINSON

**WGK Homes**



**LAGAN MEWS  
APARTMENTS**

HILLSBOROUGH ROAD  
LISBURN



TEMPLETON  
ROBINSON

**WGK Homes**



**LAGAN MEWS  
APARTMENTS**

HILLSBOROUGH ROAD  
LISBURN



TEMPLETON  
ROBINSON

**WGK Homes**



**LAGAN MEWS  
APARTMENTS**

HILLSBOROUGH ROAD  
LISBURN



# LUXURY SPECIFICATION

An exceptional quality finish will be incorporated into each of these outstanding homes.

We take our environmental responsibilities seriously - improved insulation and robust windows/doors, in line with new building regulations helps to keep draughts out and retains warmth.

Modern energy efficient heating systems reduce the amount of energy used to heat our homes, reducing carbon emissions and ensuring lower heating bills.

We use sustainable and recycled materials where possible, and fit dual flush toilets and energy saving lightbulbs to help you commit to a more eco-friendly way of life.

## KITCHENS & UTILITY

- Impressive high quality units with choice of doors and handles, work top with upstands and splashback behind hob
- Integrated appliances to include hob, stainless steel electric oven, extractor hood, integrated dishwasher, integrated fridge/freezer and washer dryer
- Kitchen floorplan layouts are for illustrative purposes only

## BATHROOM & ENSUITE

- Contemporary white sanitary ware with chrome fittings
- Heated towel rail to bathroom and ensuite
- Thermostatically controlled shower in bathroom and ensuite (where applicable)

## FLOOR COVERING AND TILING

- Ceramic tiled floor to kitchen, bathroom, ensuite and cloakroom
- Selected tiling to bath and sinks
- Multi panel board to shower enclosure
- Carpets to lounge and bedrooms

## INTERNAL FEATURES

- Insulated to new building regulations
- Natural gas heating
- Walls and ceilings painted throughout
- White painted skirting and architraves
- High specification internal doors with quality ironmongery
- Comprehensive range of electrical points, sockets, television and telephone points
- Wired for Sky Q

- Recessed down-lights to kitchen, ensuite and bathroom
- Mains smoke and carbon monoxide detectors
- Fitted alarm system
- Feature electric fire
- Lift to first and second floors
- Extract ventilation system

## EXTERNAL FEATURES

- uPVC triple glazed and acoustic windows throughout
- Parking to be finished in bitmac
- Solar panels

## COMMON LANDSCAPED AREA

- There will be professionally landscaped entrance and boundaries to be maintained by a management company and paid for by way of an annual management charge

## BUILDING WARRANTY

- Each home will be issued with an NHBC 10 year warranty certificate



## LAGAN MEWS APARTMENTS

HILLSBOROUGH ROAD  
LISBURN



Specification may vary from apartment to apartment and is subject to change.

SELLING AGENT

**TEMPLETON  
ROBINSON**

**Templeton Robinson Lisburn**

17 Market Place

Lisburn BT28 1AN

Telephone 028 9266 1700

[www.templetonrobinson.com](http://www.templetonrobinson.com)

DEVELOPER

