

6ix
BRANTWOOD STREET



CGI shown for illustration purposes only

THE CHESTER

3 BED TOWNHOUSE | c. 840 sq ft approx

GROUND FLOOR

Entrance Hall			
Lounge	ft	13'9" x 13'0"	m 4.22 x 3.94
Kitchen Dining	ft	13'0" x 11'6"	m 3.94 x 3.50
Utility	ft	5'6" x 4'5"	m 1.70 x 1.35
WC	ft	5'6" x 3'2"	m 1.70 x 0.95

FIRST FLOOR

Principal Bedroom	ft	13'5" x 8'9"	m 4.10 x 2.69
Bedroom 2	ft	11'9" x 9'2"	m 3.62 x 2.80
Bedroom 3	ft	8'1" x 7'3"	m 2.46 x 2.20
Bathroom	ft	6'9" x 6'6"	m 2.09 x 1.98



Floor plans are not to scale and all dimensions are approximate

THE CHESTER

3 BED TOWNHOUSE | c. 840 sq ft approx



028 90 832 832
colingrahamresidential.com



028 9068 2777
pinpointproperty.com



bluehousedevlopment.com



THE ALDEN

6ix
BRANTWOOD STREET

THE CHESTER

CGI shown for illustration purposes only

THE ALDEN & THE CHESTER

3 BED SEMI DETACHED | THE ALDEN c. 915 sq ft approx | THE CHESTER: 840 sq ft approx



GROUND FLOOR - THE ALDEN

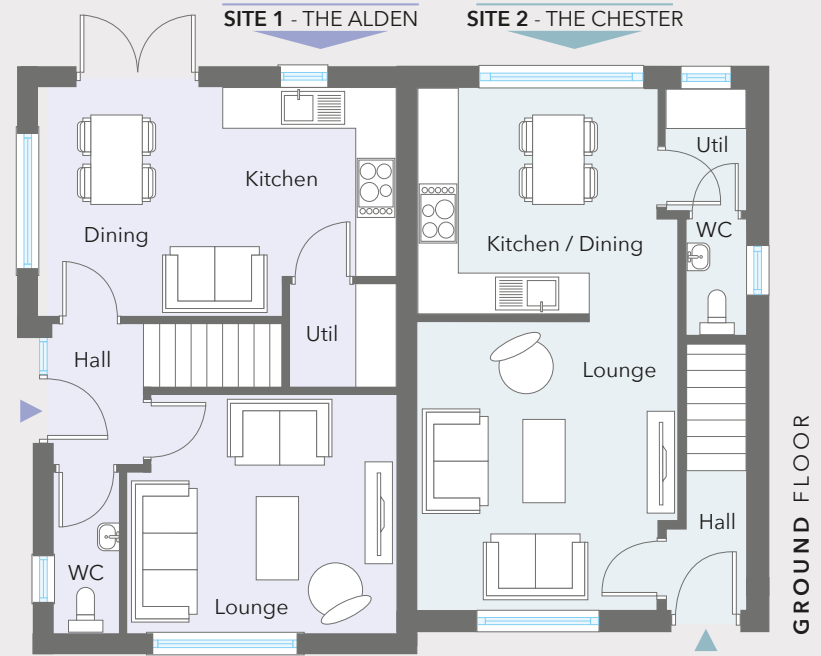
Entrance Hall with separate WC

Lounge	ft	13'2" x 11'8"	m	4.02 x 3.57
Kitchen Dining	ft	17'6" x 11'3"	m	5.35 x 3.44
Utility	ft	5'3" x 5'1"	m	1.60 x 1.55

GROUND FLOOR - THE CHESTER

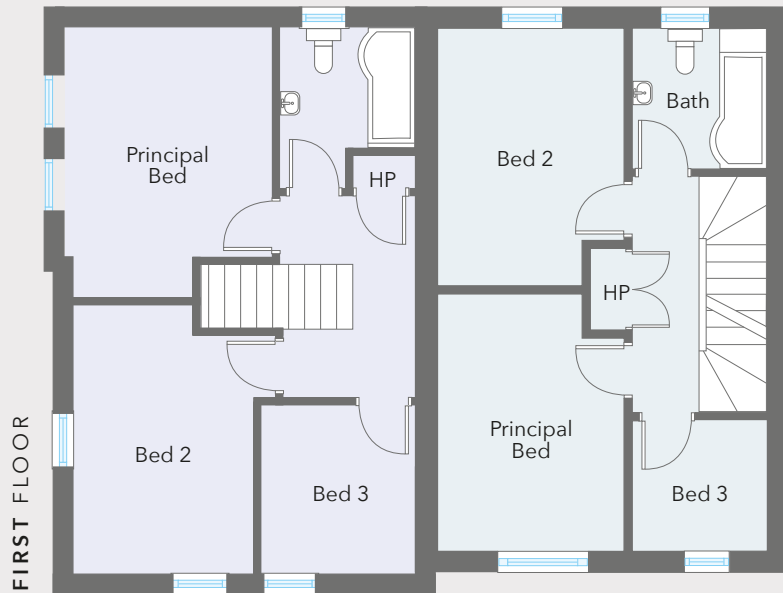
Entrance Hall

Lounge	ft	13'9" x 13'0"	m	4.22 x 3.94
Kitchen Dining	ft	13'0" x 11'6"	m	3.94 x 3.50
Utility	ft	5'6" x 4'5"	m	1.70 x 1.35
WC	ft	5'6" x 3'2"	m	1.70 x 0.95



SITE 1 - THE ALDEN

SITE 2 - THE CHESTER



FIRST FLOOR - THE ALDEN

Principal Bedroom (max)	ft	13'3" x 10'6"	m	4.04 x 3.20
Bedroom 2	ft	13'2" x 8'9"	m	4.02 x 2.68
Bedroom 3	ft	8'4" x 7'7"	m	2.53 x 2.34
Bathroom	ft	7'1" x 5'10"	m	2.15 x 1.80

FIRST FLOOR - THE CHESTER

Master Bed	ft	13'5" x 8'9"	m	4.10 x 2.69
Bedroom 2	ft	11'9" x 9'2"	m	3.62 x 2.80
Bedroom 3	ft	8'1" x 7'3"	m	2.46 x 2.20
Bathroom	ft	6'9" x 6'6"	m	2.09 x 1.98

THE ALDEN & THE CHESTER

3 BED SEMI DETACHED

THE ALDEN c. 915 sq ft approx | THE CHESTER: 840 sq ft approx



028 90 832 832
colingrahamresidential.com



028 9068 2777
pinpointproperty.com



bluehousedevlopment.com