




Carn McCormick Meadow

Quietly connected, grounded in nature and tucked into the countryside.

Turnkey homes Gortnageeragh Road, Cargan, BT43 7JU

HAGAN 
It begins at home

Contents

 Click on number to go to the section

haganhomes.co.uk
Contact: 028 9334 2234
info@haganhomes.co.uk

[Book a viewing](#)

01.

Natural, Quiet,
Tranquil.

3

02.

Created for
living

15

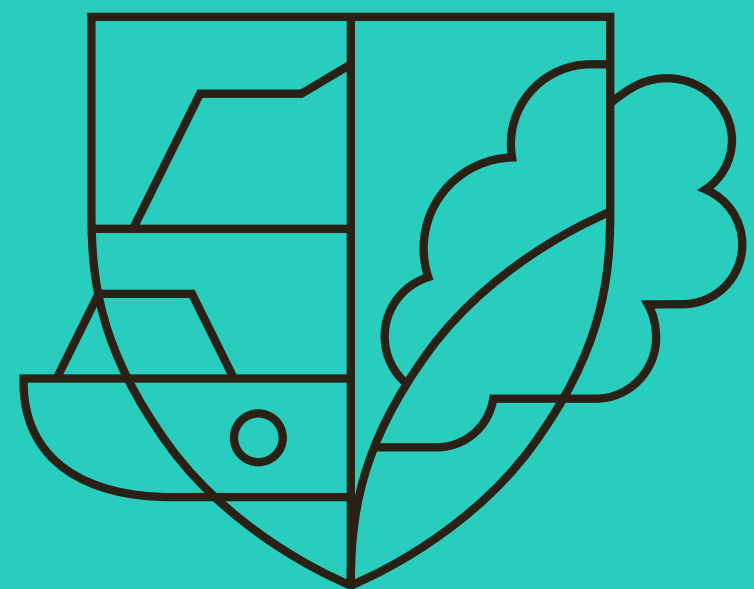
03.

Your home
matters

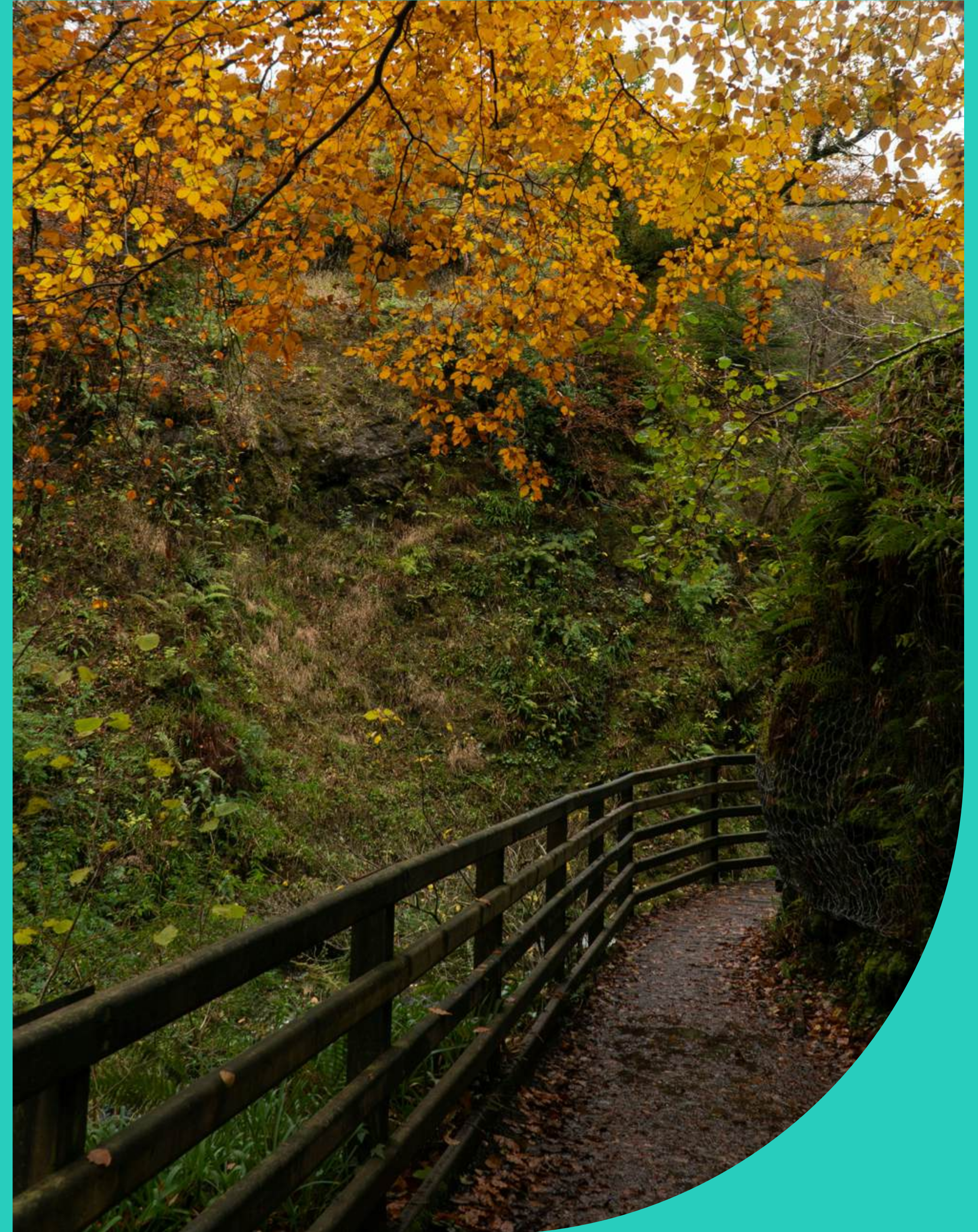
27

Carncormick Meadow

Natural, Quiet, Tranquil.



01.



Quietly connected, grounded in nature and tucked into the countryside.



Computer visual



Wake to birdsong, breathe in mountain air, and set your own rhythm.

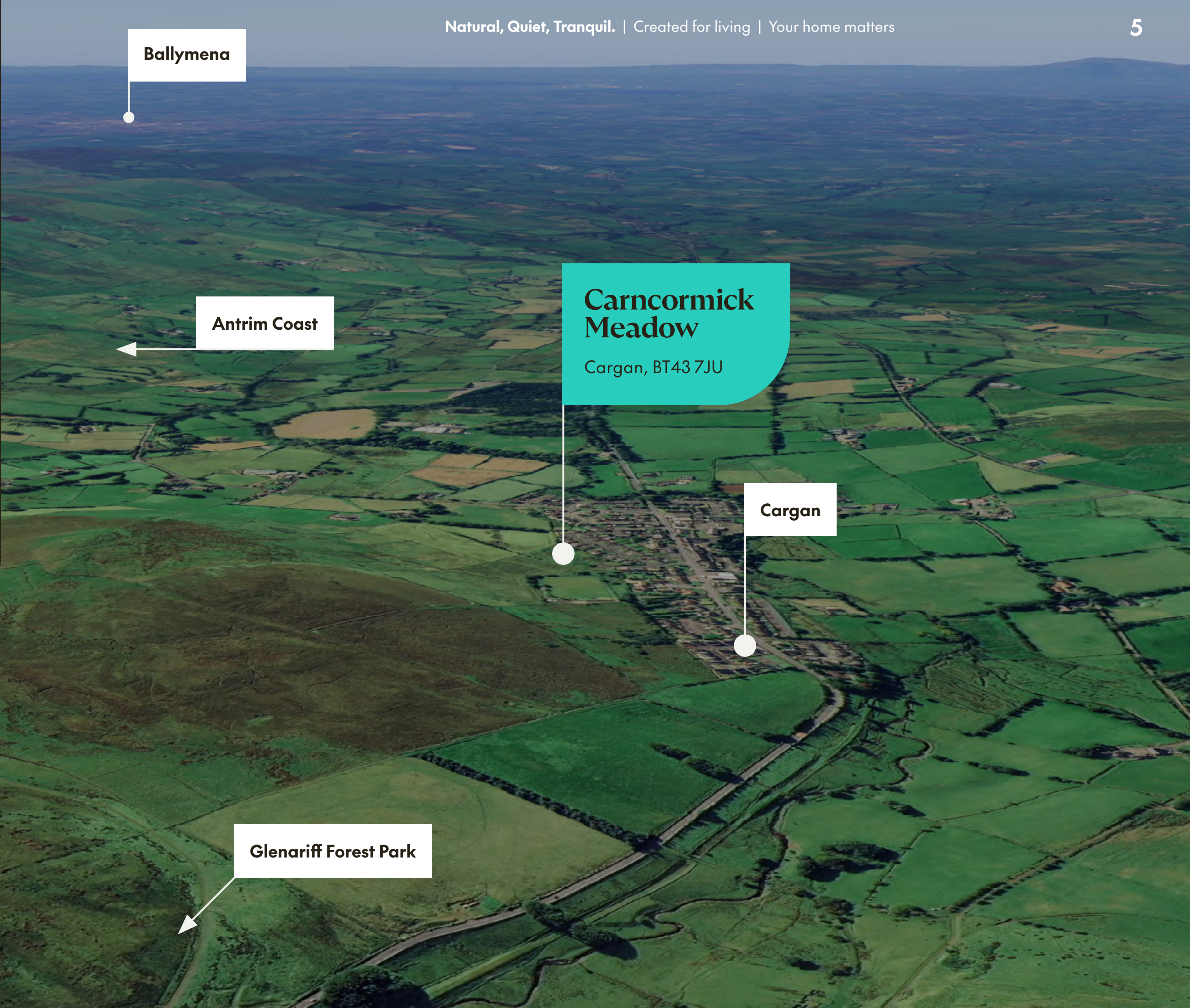
Life at Carncormick Meadow is slower, simpler—whether you're walking out by Cranny Falls, picking up firewood from Kearney's in the village, or heading into Ballymena for schools, shops and the Saturday market. Glenariff Forest Park is just around the corner, with its waterfalls, woodland trails and wild beauty through every season.

This is a new collection of three-bedroom semi-detached and detached homes, offering generous gardens, off-street parking, and smart, modern layouts made for real life. Each home is EPC A-rated for energy efficiency—meaning lower running costs, year-round comfort, and future-ready performance as standard.

Whether you're starting out, upsizing or looking for a quieter setting to come home to, Carncormick Meadow gives you practical space, quality finishes and the ease of a countryside pace—without feeling remote.

Where the landscape lifts and life slows down.

Open roads, wide skies and the calm of the countryside—Carncormick Meadow sits just outside Cargan, with Glenariff Forest, Ballymena and the Antrim coast all close at hand. Whether it's the school run, a hike in the glens or a drive to the sea, every direction brings you somewhere worth being.



Ballymena

Antrim Coast

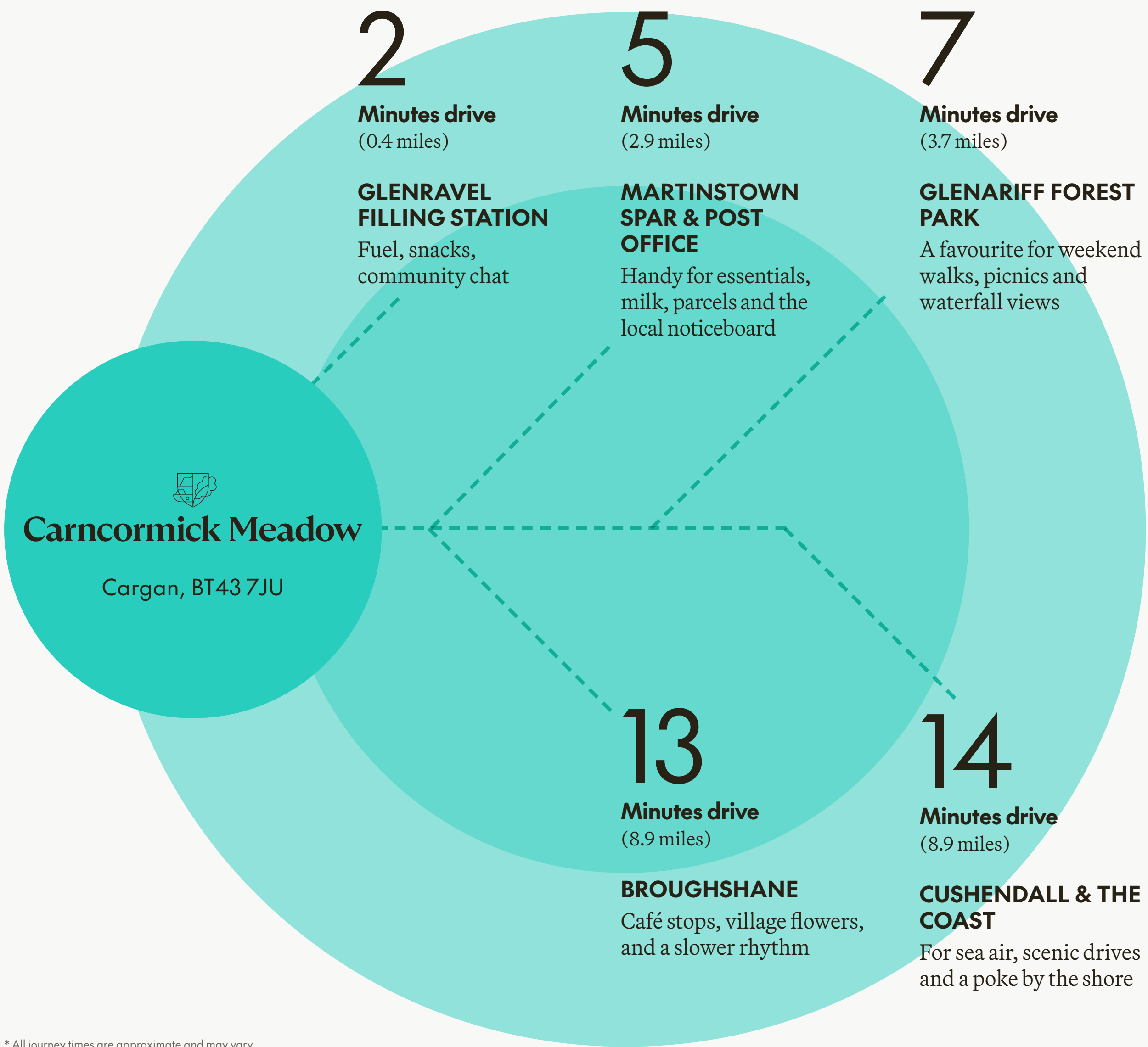
Carncormick Meadow

Cargan, BT43 7JU

Cargan

Glenariff Forest Park

Getting around



* All journey times are approximate and may vary

TRANSPORT

Carncormick Meadow is quietly tucked into the countryside, yet offers straightforward access by road and local bus routes.



Road Links

A43 Glenravel Road

Direct access to Ballymena and the coastal Glens



Airport Access

Belfast International Airport

26.7 miles / 35 min drive

George Best Belfast City Airport

40.6 miles / 45 hour drive



Ballymena Bus & Train Station

11.0 miles / 17 min drive

Links to Belfast, Derry - Londonderry, Larne and beyond

Close to everything that matters

Hospitals & pharmacies

- 1

Ballymena Health & Care Centre

9.8 miles / 14 min drive
- 2

Boots Pharmacy, Fairhill Centre, Ballymena

10.7 miles / 16 min drive
- 3

Galgorm Pharmacy

12.8 miles / 19 min drive

Doctors & health services

- 4

Specsavers Opticians

10.5 miles / 16 min drive
- 5

Riada Dental Surgery, Ballymoney

19.8 miles / 27 min drive
- 6

The Curfew Surgery, Rasharkin

14.1 miles / 23 min drive

Local parks & green open areas

- 7

Broughshane Village Gardens

8.2 miles / 14 min drive
- 8

Glenariff Forest Park

3.7 miles / 7 min drive

Supermarkets, supplies & services

- 9

Texaco (Fry's Filling Station), Ballymena

11.1 miles / 17 min drive
- 10

Lidl, Ballymena

11.3 miles / 18 min drive
- 11

Sainsbury's Ballymena

11.4 miles / 18 min drive
- 12

Tesco Superstore, Ballymena

11.8 miles / 19 min drive
- 13

Glenravel Filling Station

11.5 miles / 24 min drive

Recreation & wellness

- 14

Ballymena Leisure Centre

10.8 miles / 17 min drive
- 15

Galgorm Spa & Resort

13.6 miles / 20 min drive
- 16

Glenariff Beach & Promenade

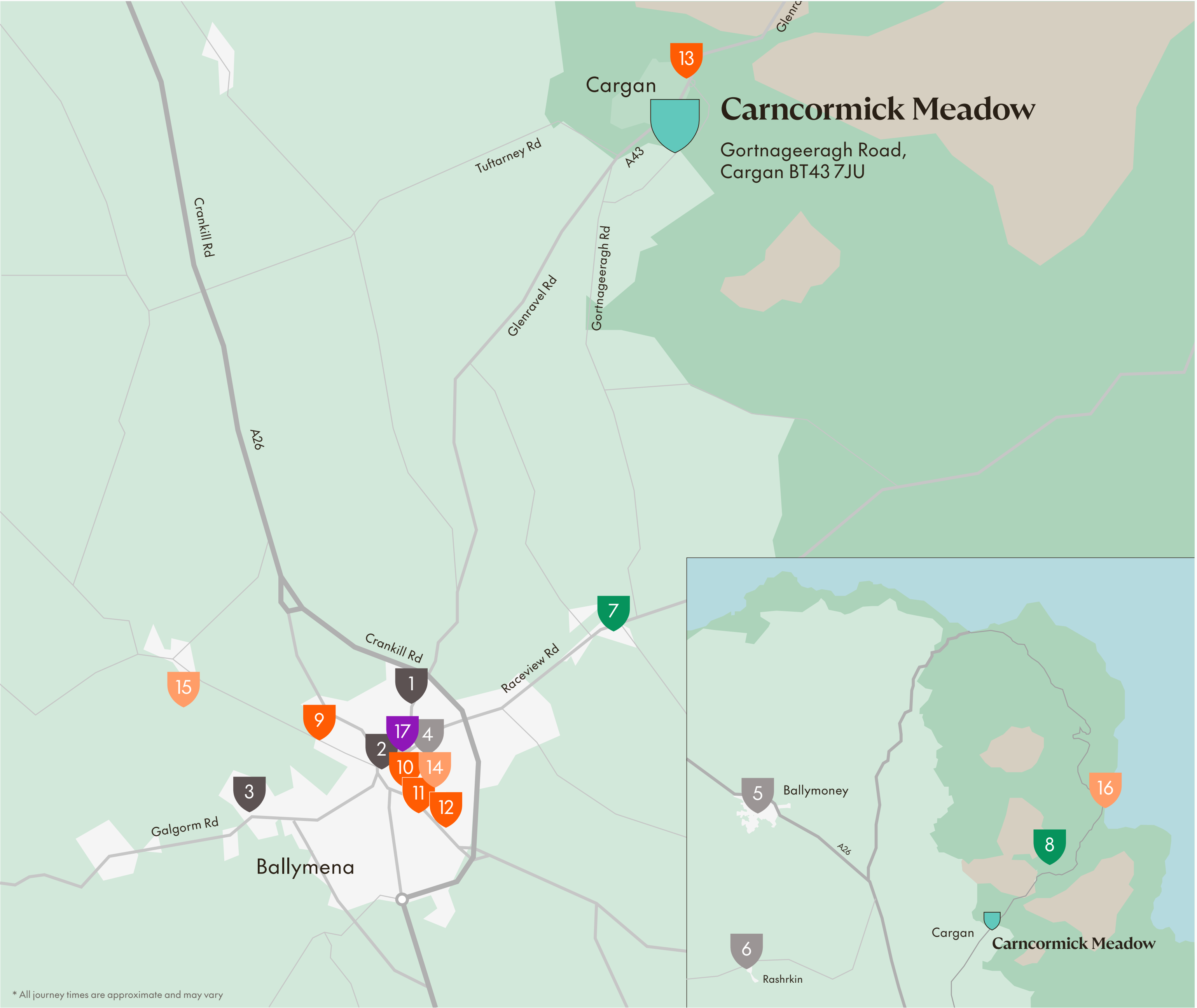
8.3 miles / 14 min drive

Local gems & artisan producers

- 17

The Blackstone Bar & Restaurant, Ballymena

10.5 miles / 16 min drive



A MODERN PACE,
A NATURAL PLACE.
FRESH AIR AND OPEN SPACE.



There's quiet history in these hills. Long before forest trails and picnic spots, Cargan was a working landscape—shaped by coal seams, peat banks, and the narrow-gauge railway that once carried people and produce from the glens to the coast. Farming, mining and quiet resilience built the rhythm of this place—and that rhythm still runs through village life today.

You'll feel it in the pace of a frosty school run. In the weekend drives to Ballymena. In the easy warmth of the local shop or the walks through Glenariff, just over the hill. Life here moves slower, but it moves with purpose.

Carncormick Meadow brings something considered and new to this well-rooted place—a collection of three-bedroom semi-detached and detached homes, designed for the way people live today. With practical layouts, modern finishes, generous gardens and energy-efficient features throughout, these homes offer a quiet kind of confidence—built to last, and made to feel like home from day one.

Looking out to Glenariff, with the coast within easy reach, this is a place to feel grounded. To live more simply, breathe more deeply, and let your future unfold at your own pace.

For bright futures

From **village classrooms** to **top-tier grammar schools**, the Cargan area offers trusted educational options within easy reach.



	Distance	Drive
Pre-school / Nursery		
Little Treasures Day Nursery, Ballymena	11.2 miles	17 min
Carniny Early Years, Ballymena	13.3 miles	19 min
Rascals Day Nursery, Ballymena	11.2 miles	17 min
Primary		
Mary Queen of Peace Primary School (Village-based campus)	0.0 miles	
Mary Queen of Peace Primary School	2.9 miles	5 min
Seaview Primary School	17.7 miles	29 min
Secondary / High school		
St Louis Grammar School, Ballymena	11.1 miles	18 min
Ballymena Academy	11.3 miles	18 min
Slemish College, Ballymena	13.2 miles	19 min
St Killian's College, Carnlough	13.0 miles	23 min

Families typically access provision in nearby Ballymena.

Glenravel Valley local guide

Your own pace, your own place. Where things slow, the air clears, and life falls into step with the land.

Set in the Glenravel Valley, Cargan is quiet by nature—steady, scenic, and close to the coast. At Carncormick Meadow, modern homes meet ancient ground. It's space to grow, calm to return to, and a rhythm that lasts.



Room to move

Green fields, forest trails and coastlines close by—perfect for weekend walks or midweek resets.



Local life, naturally

A Spar, a filling station, and neighbours who know your name—everything you need, nothing you don't.

Discover Glenravel Valley



Well-timed connections
Ballymena is just 20 minutes away for supermarkets, schools and train links.

Ballymena town hall by Lisa Jarvis CC BY-SA 2.0 via en.wikipedia.org
<https://commons.wikimedia.org/w/index.php?curid=9057229>



Tradition meets today
From centuries-old glens to smart new homes with EPC A-rated efficiency, this is the best of both worlds.



Quietly grounded
No noise, no rush—just a landscape that steadies you and a community that welcomes you.



Everyday ease
Trusted GPs, nearby pharmacies and access to care when you need it—without the city stress.

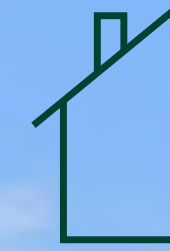
Designed Efficient

Our homes produce electricity, retain heat and save on energy bills.

New homes
built by Hagan:Increase
efficiencyReduce
carbon footprintA-rated Energy
Performance
Certificate (EPC)High specification
insulation
and glazingGood for green
mortgagesLatest heating
technologyModular
construction and
high performance

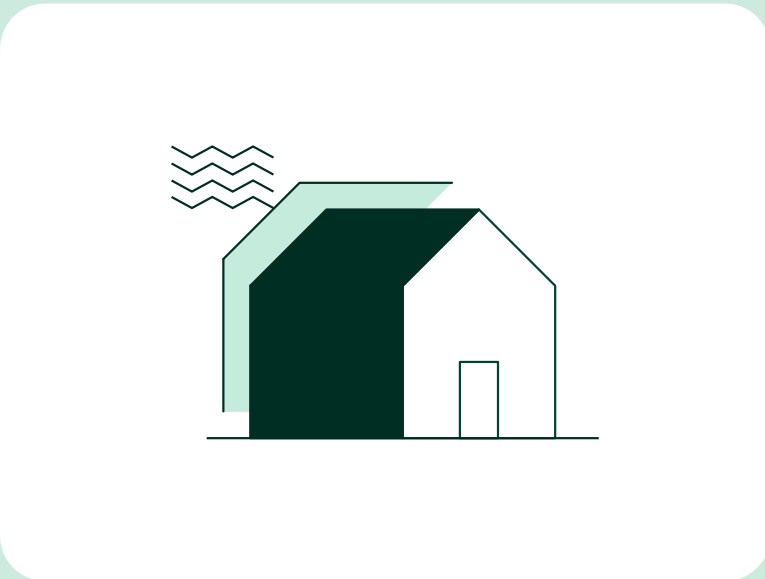
Save up to £500/year on electricity*

*energy provider tariff dependent

**A** RATED
Eco living

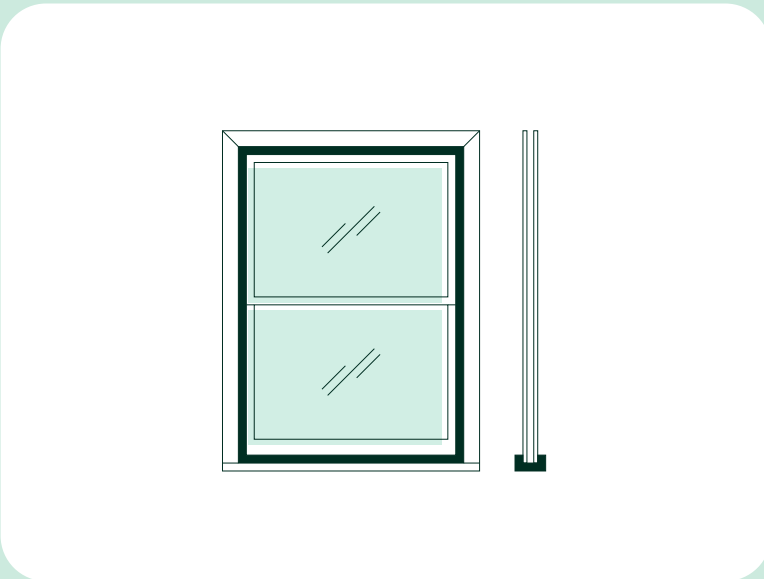
Designed Efficient

The right choices for you and the planet.



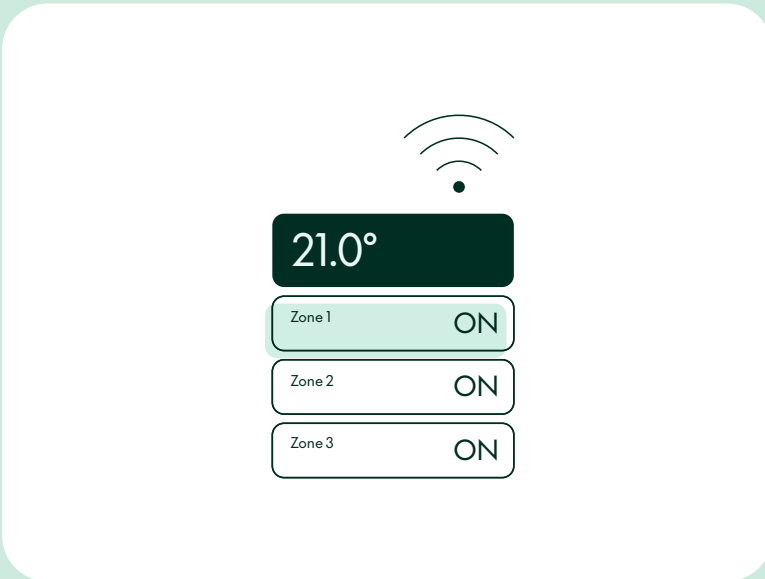
Timber frame construction

Timber frame homes are faster to build-often wind and watertight within two days. High-performance insulation contributes to reducing energy bills by up to 50%. As a renewable material, timber uses 20% less energy in production, with every tree harvested replaced, making it one of the most sustainable construction methods.



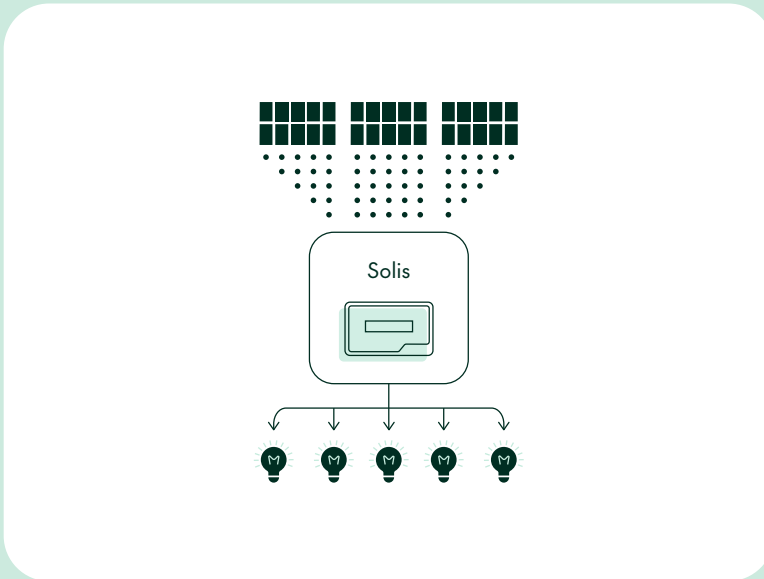
High quality windows & doors

Windows and doors are sustainably made by Baskil Window Systems using wind and biomass energy, with strong recycling and water treatment in place. Double-glazed uPVC windows combine style and performance, while composite entrance doors and hardwood frames offer modern comfort, energy efficiency, and a distinctive finish.



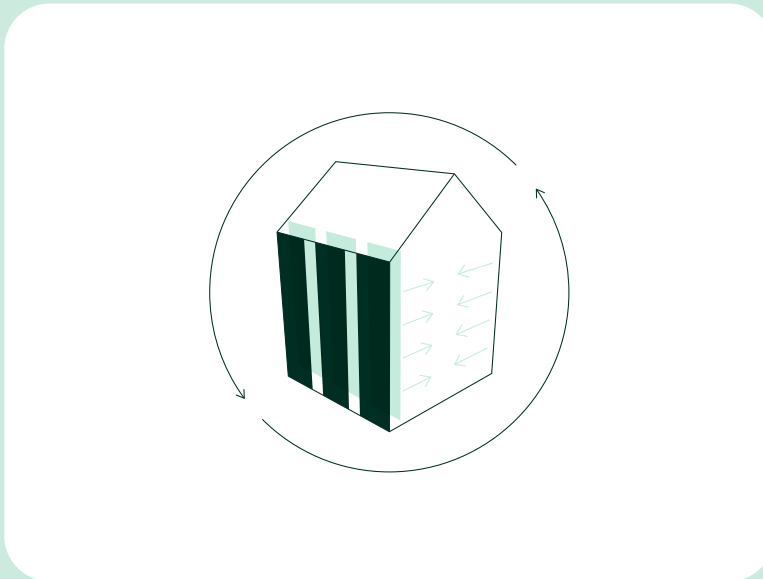
Smart Heating Control System

The Ember PS smart heating system offers convenient, cost-effective control with a free app for multiple users. Manage heating from your phone, at home or abroad. The WiFi-ready RF thermostat communicates with your boiler to maintain ideal temperatures, with features like boost, scheduling, holiday mode, and multi-home control.



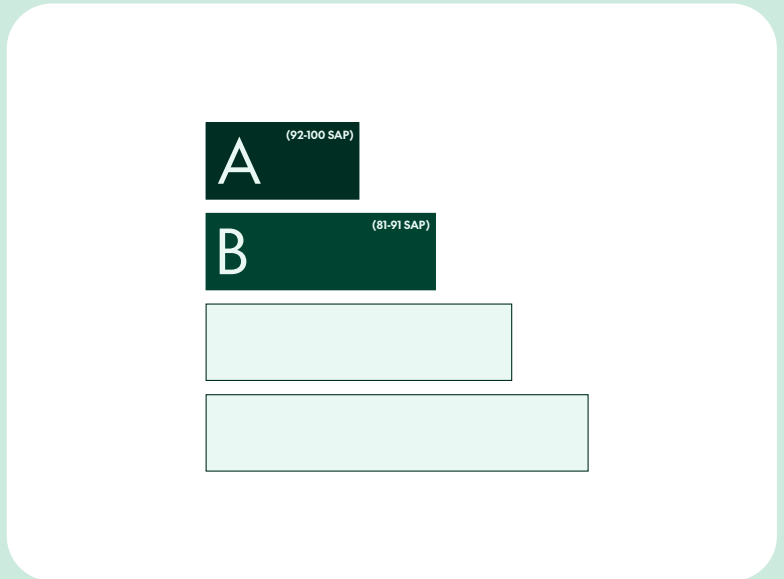
Renewable PV solar panels

Each low-profile roof is integrated with black solar panels, depending on orientation, to support an A-rated energy performance. The system produces electricity even on cloudy days, converted via a Solis Mini Series Inverter, with potential savings of up to £500* a year (*energy tariff dependent).



Thermally efficient insulation

High-performance specification with excellent U-values helps retain heat, reduce emissions, and contributes to lower energy bills. Glass mineral wool insulation in timber walls minimises air movement, cuts heat loss, and absorbs sound. A breathable membrane protects the external walls, insulated ground floor and roof exceeds building regulations-delivering comfort, efficiency, and long-term savings.



Green Mortgages

Green mortgages offer incentives-such as lower interest rates or cashback-for buying energy-efficient new homes. They typically require an EPC rating of A or B, which our homes meet. Benefits include reduced borrowing costs due to lower energy use, aligning with government efforts to promote sustainable, low-carbon housing.

Aspirational new homes, thoughtfully delivered by Hagan.

Every innovative, forward-thinking Carncormick Meadow home is designed by our in-house architects and creative team. For 37 years, Hagan has been making high-quality, competitively priced homes and building thriving communities.

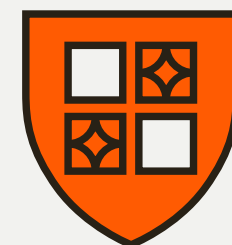
**Experience the Carncormick Meadow
show home yourself**

[Book viewing here](#)



A-Rated Eco Living EPC

Highest rating meaning bills will be lower (EPC = Energy Performance Certificate).



Specification

Best fixtures and fittings, from fitted kitchens and sanitary ware to tiling and appliances.



Safe and sound

Built to advanced standards for security, insulation, fire safety, and comfort.



For modern living

Smartly designed flexible spaces for every lifestyle or family.



High-spec and energy-efficient

Cheaper to run with fixtures, fittings and systems built for elegance and simplicity.



Personalise your new home

Pick the fixtures and finishes you love. (subject to build programme).



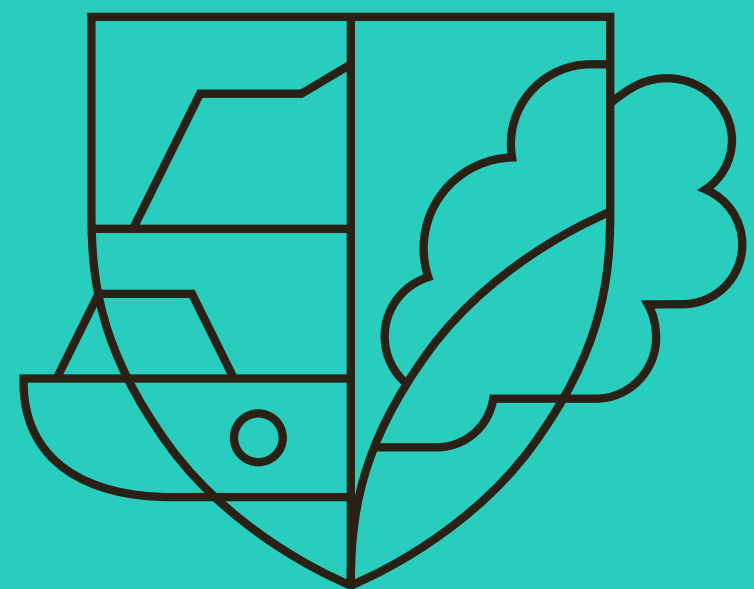
10 Year NHBC guarantee

NHBC provides a 10-year structural warranty, supporting better building standards and protecting homeowners.

Your home, covered.

Carncormick Meadow

Created for living



02.



Specification with modern living in mind



General features

- uPVC double glazed windows
- Internal walls, ceilings and woodwork painted in neutral colours
- Entrance hall, kitchen and dining area floors tiled
- Carpets to lounge and bedrooms
- White four panel doors with chrome handles
- x1 USB double socket in kitchen and all bedrooms
- Ethernet port in smaller bedroom
- Oil fired central heating system with high efficiency boiler and thermostatically controlled radiators
- Extensive electrical specification to include pre-wire for BT and Sky Q
- Ultrafast broadband speeds of up to 1000 Mps available
- Ember PS Smart Heating Control System - you can control heating on mobile app from anywhere
- Mains supply smoke, heat and carbon monoxide detectors
- Photovoltaic (PV) Solar Panels - complete with a minimum of 5 PV panels.
- 2-year defects liability period by Hagan
- 10 year NHBC structural warranty



Kitchen

- A choice of quality kitchen doors, worktop colours and handles
- Contemporary underlighting to kitchen units
- Floor level mood lighting
- Ceramic floor and partial wall tiling from superior range
- Electric oven, hob and stainless steel and glass extractor hood
- Integrated washing machine
- Integrated dishwasher
- Integrated fridge / freezer



Bathroom, ensuite & WC

- Ceramic floor and partial wall tiling fitted from a superior range
- Thermostatically controlled bath / shower mixer and screen
- Contemporary white sanitary ware
- Soft close toilet seat and cover
- Chrome heated towel rail
- Clicker waste system in wash hand basin
- Ensuite (where applicable) with thermostatically controlled shower mixer and screen



Other features

- External lighting to front and rear doors
- Rear gardens to be grassed
- Decorative flagged path around dwellings with bitmac parking area
- Outside water tap
- Extensive landscaping across entire development
- All communal areas / amenity areas maintained by a management company (fee to be confirmed)



Every home is turnkey and finished to the highest standard. Thoughtfully designed inside and out, each home features a refined palette of finishes and smart details that simplify everyday living.

Enjoy your home from day one

Personalise your space with a range of options, from quality doors and worktops to handles, and create a kitchen that's truly yours.

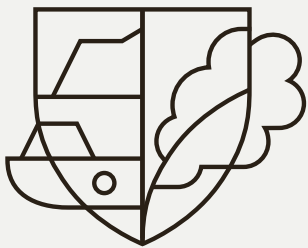


Speak to our Selling Agents about your options.

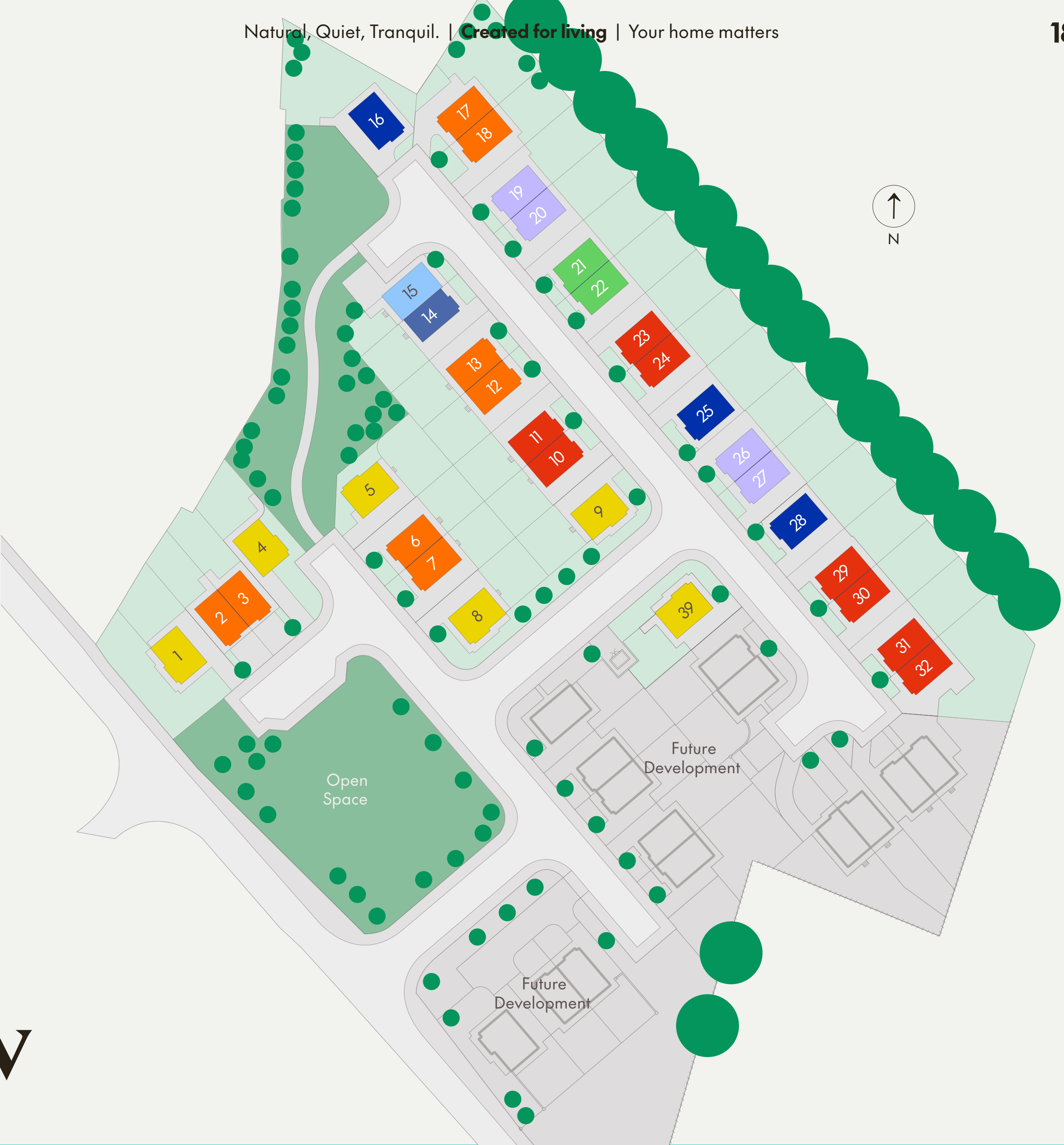
A development that matters

House type key

- The Agnew**
3 Bedroom Detached
- The Collin**
3 Bedroom Detached
- The Crockaneel**
3 Bedroom Semi-Detached
- The Douglas**
3 Bedroom Semi-Detached
- The Knocklayd**
3 Bedroom Semi-Detached
- The Skerry**
3 Bedroom Semi-Detached
- The Soarns**
3 Bedroom Semi-Detached
- The Trostan**
3 Bedroom Semi-Detached



Carncormick Meadow





Computer visual

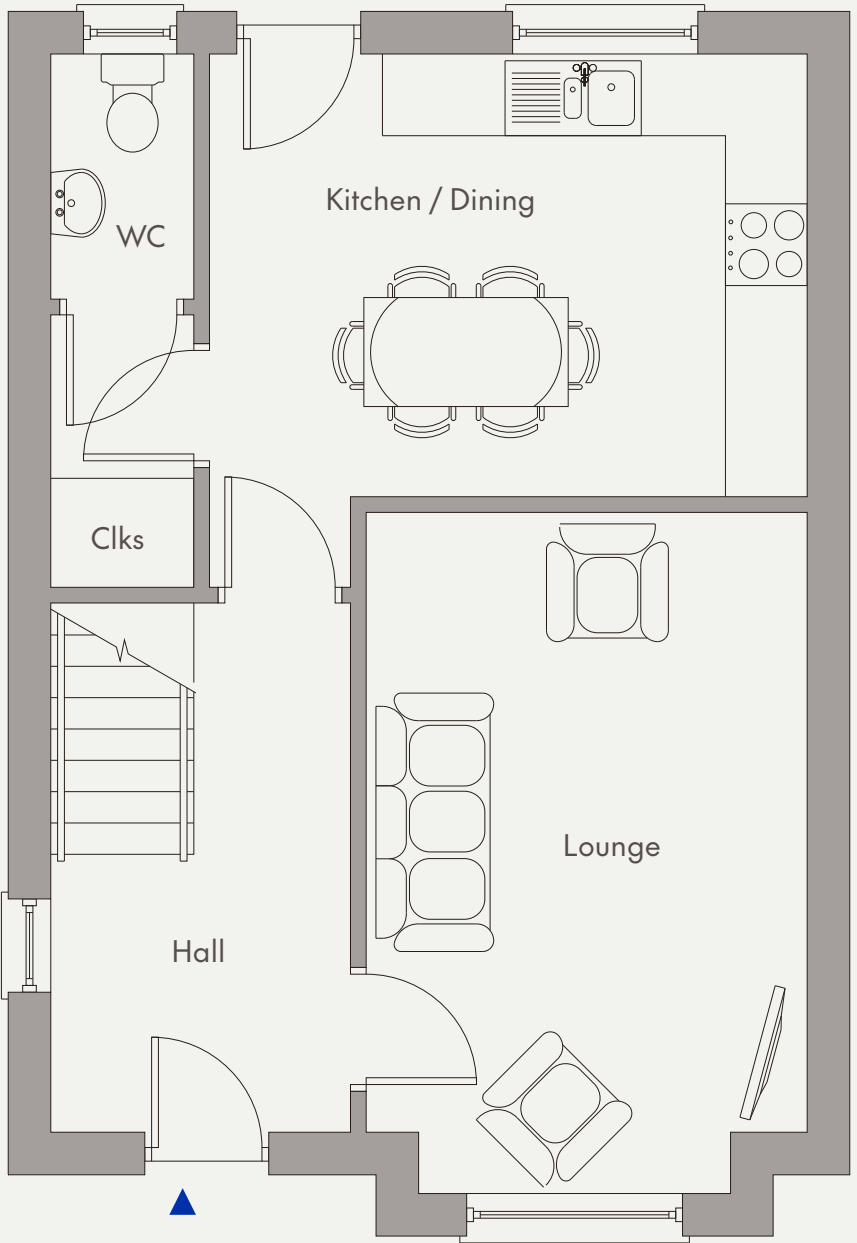
The Agnew

3 Bedroom Detached
Total Floor Area: 968 sq ft (approx)



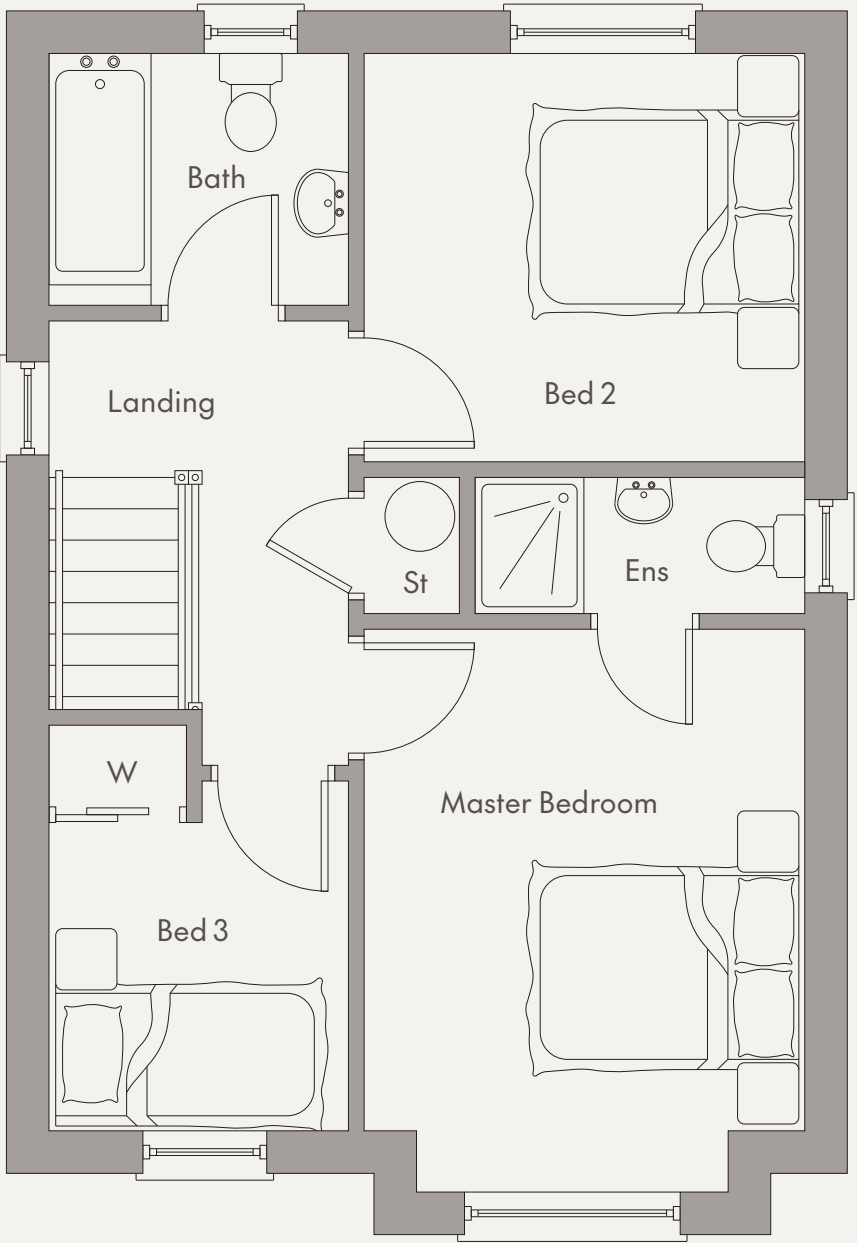
Computer visual

Sites: 16 & 25
Handed version on site:
28



Ground floor

Lounge	16'5" x 10'7" (max)
Kitchen / Dining	14'5" x 12'10" (max)
WC	5'11" x 3'5"



First floor

Master Bedroom	13'7" x 10'7" (max)
Ensuite	7'11" x 3'3"
Bedroom 2	10'7" x 9'10"
Bedroom 3	8'5" x 7'3" (max)
Bathroom	7'3" x 6'1"

The Collin

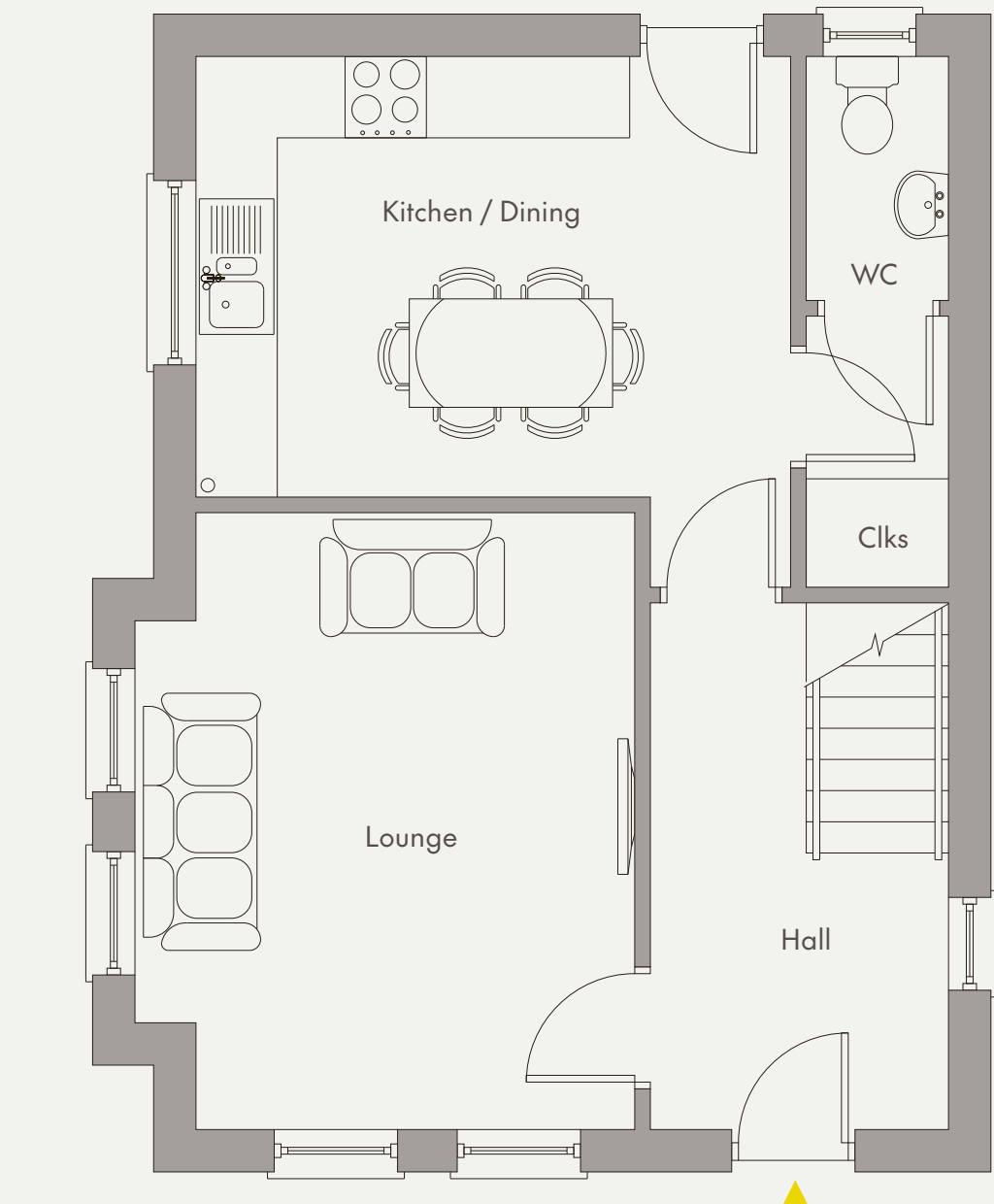
3 Bedroom Detached
Total Floor Area: 974 sq ft (approx)



Computer visual

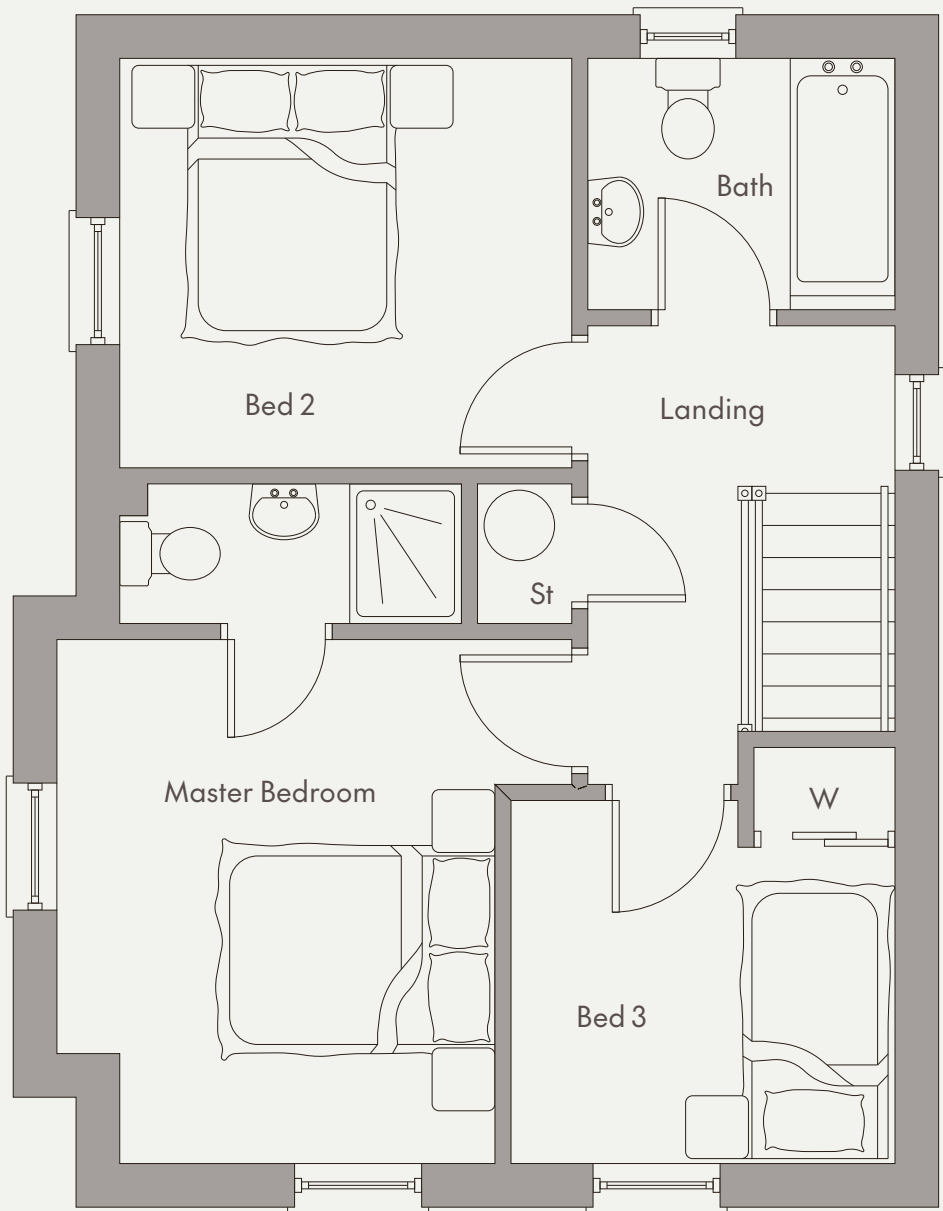
Sites: 1, 5 & 9

Handed version on sites:
4, 8 & 39



Ground floor

Lounge	14'11" x 12'1" (max)
Kitchen / Dining	14'5" x 12'10" (max)
WC	5'11" x 3'5"



First floor

Master Bedroom	12'4" x 12'1" (max)
Ensuite	8'0" x 3'3"
Bedroom 2	10'7" x 9'7"
Bedroom 3	9'0" x 8'6" (max)
Bathroom	7'3" x 5'11"

The Crockaneel & The Douglas

The Crockaneel

3 Bedroom Semi-Detached

Total floor area: 881 sq ft (approx)

Site: 14

The Douglas

3 Bedroom Semi-Detached

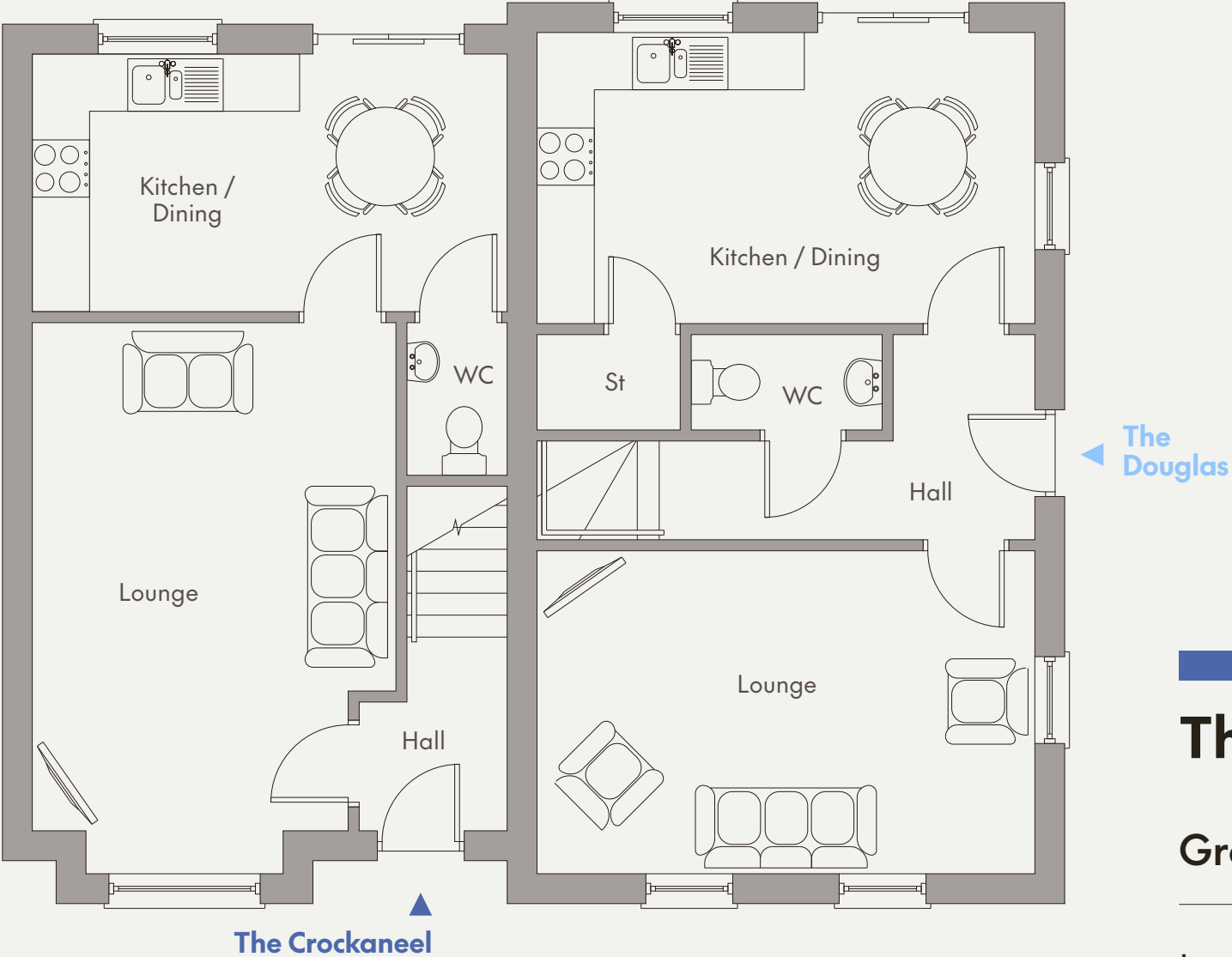
Total floor area: 989 sq ft (approx)

Site: 15

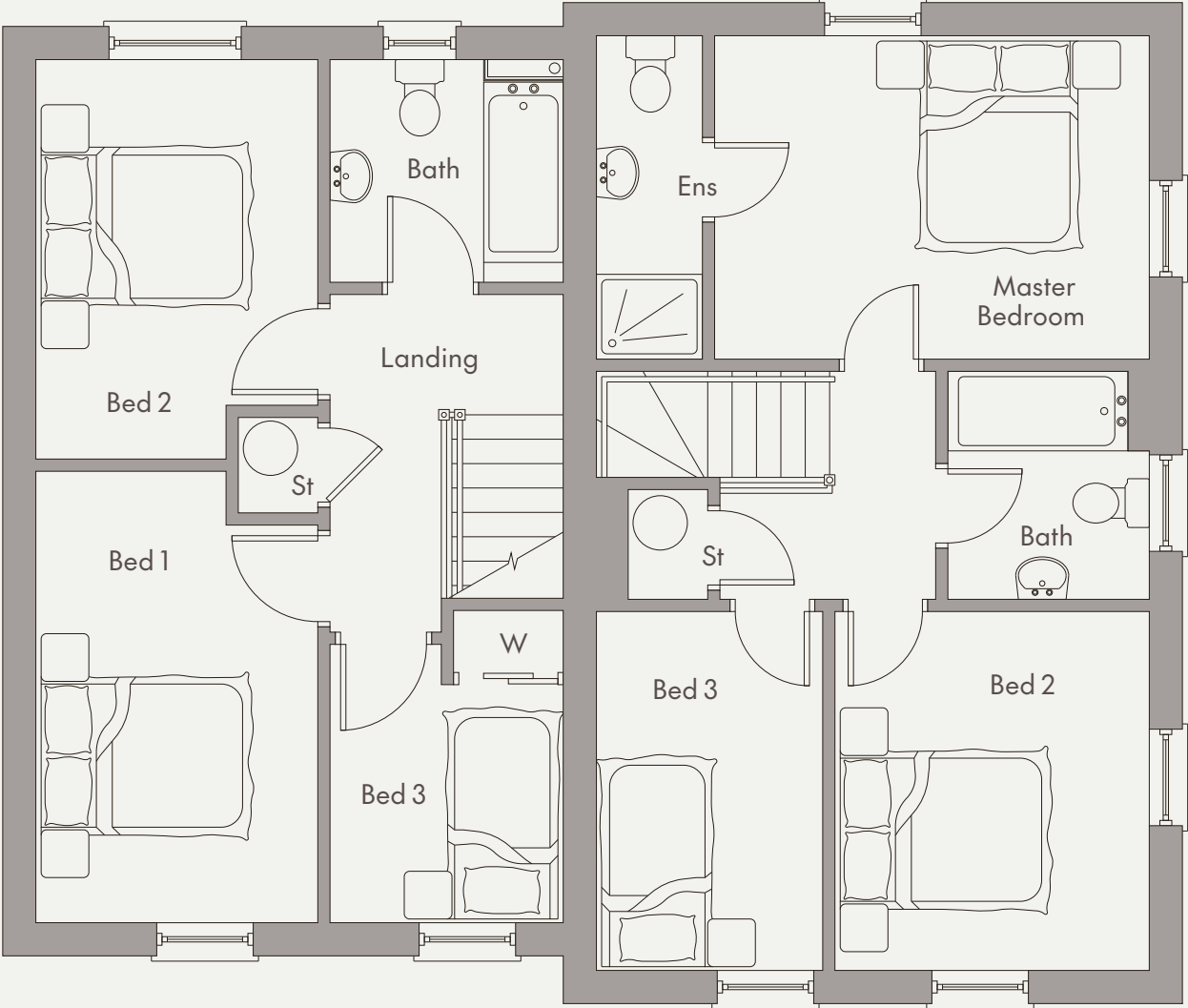


Computer visual

Ground floor



First floor



The Crockaneel

Ground floor		First floor	
Lounge	18'11" x 12'6" (max)	Bedroom 1	14'0" x 8'9" (max)
Kitchen / Dining	16'4" x 8'10"	Bedroom 2	12'4" x 8'9" (max)
WC	5'3" x 3'5"	Bedroom 3	8'7" x 7'3" (max)
		Bathroom	7'3" x 6'11"

The Douglas

Ground floor		First floor	
Lounge	17'1" x 11'1"	Master Bedroom	13'5" x 10'0"
Kitchen / Dining	17'1" x 10'0"	Ensuite	10'0" x 3'3"
WC	6'7" x 3'3"	Bedroom 2	11'1" x 9'9"
		Bedroom 3	11'1" x 7'0"
		Bathroom	7'1" x 6'3"

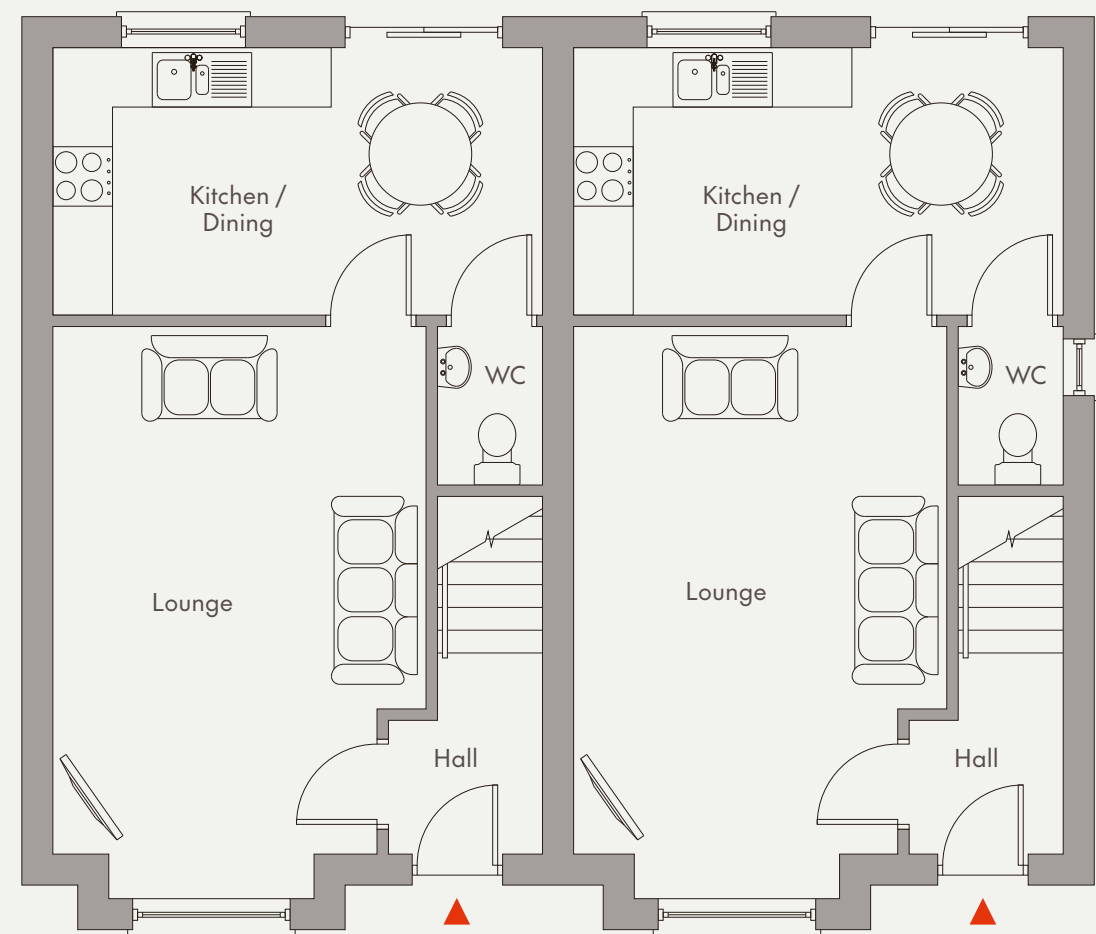
The Knocklayd

3 Bedroom Semi-Detached
Total Floor Area: 873 sq ft (approx)



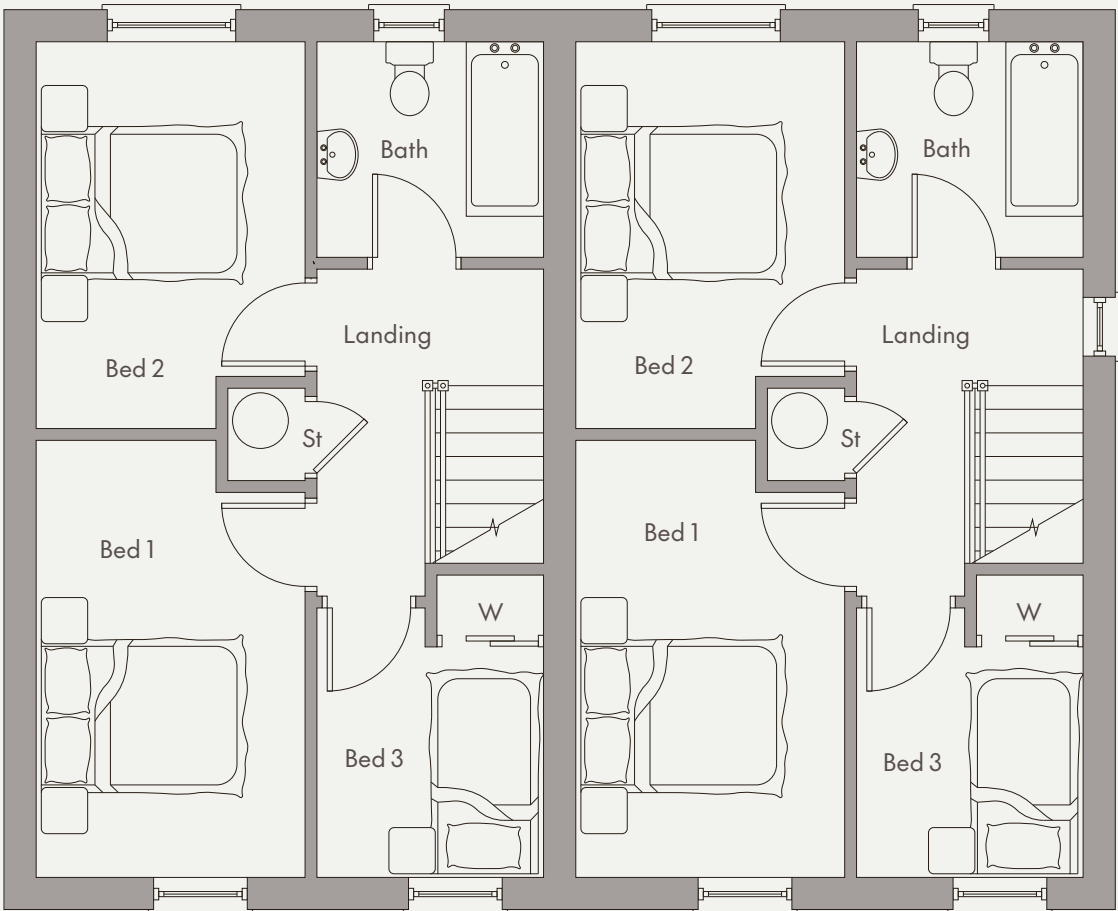
Computer visual

Sites: 10 & 11
Handed version on sites:
23/24, 29/30 & 31/32



Ground floor

Lounge	18'11" x 12'4" (max)
Kitchen / Dining	16'2" x 8'10"
WC	5'3" x 3'6"



First floor

Bedroom 1	14'0" x 8'7" (max)
Bedroom 2	12'4" x 8'7" (max)
Bedroom 3	8'7" x 7'3" (max)
Bathroom	7'3" x 6'11"

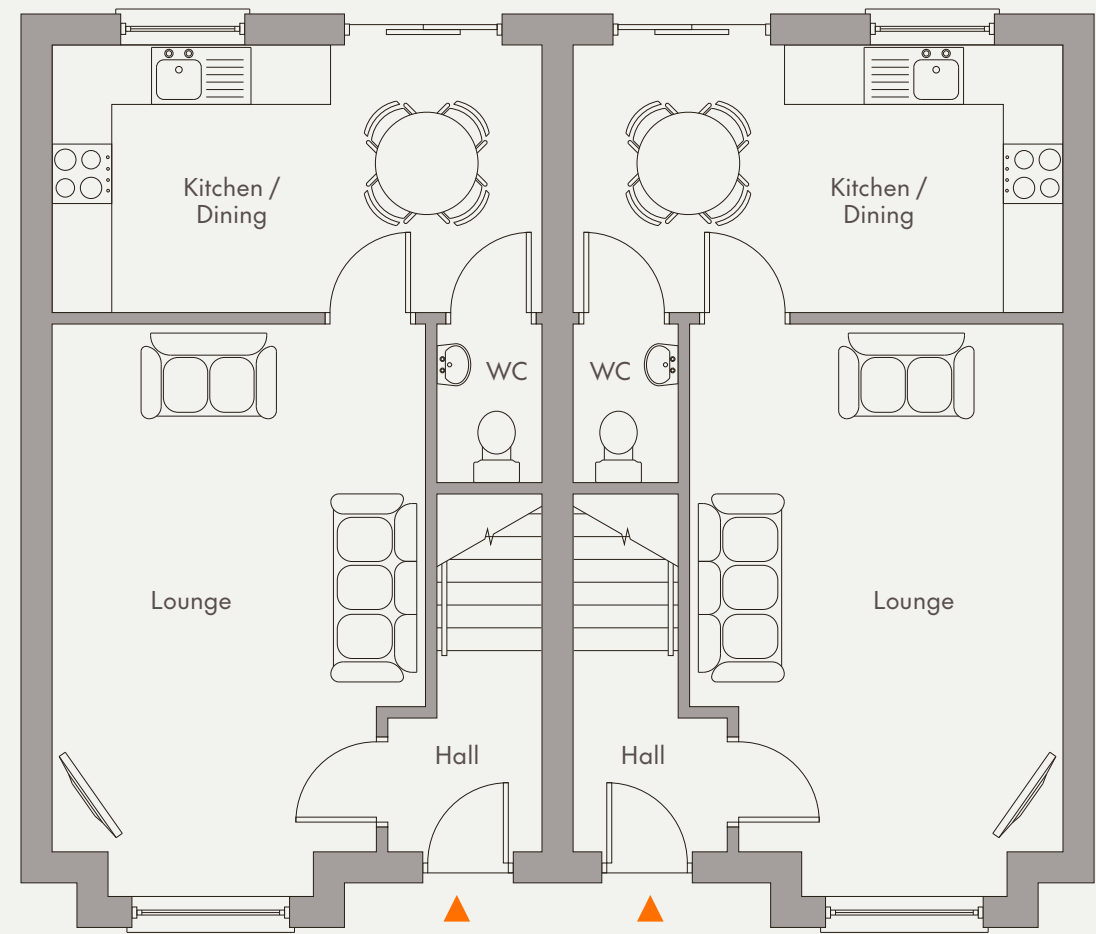
The Skerry

3 Bedroom Semi-Detached
Total Floor Area: 873 sq ft (approx)



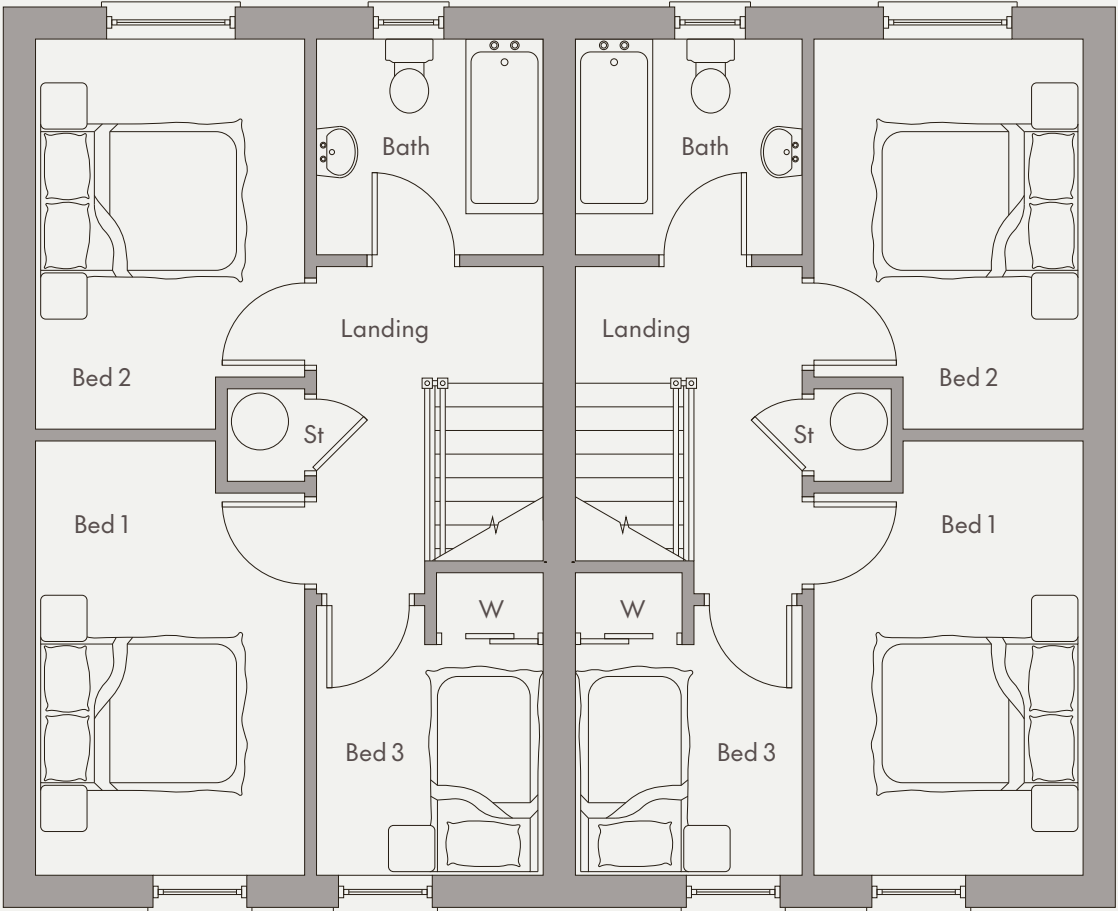
Computer visual

Sites: 2, 3, 6, 7, 12, 13, 17 & 18



Ground floor

Lounge	18'11" x 12'4" (max)
Kitchen / Dining	16'2" x 8'10"
WC	5'3" x 3'6"



First floor

Bedroom 1	13'10" x 8'7" (max)
Bedroom 2	12'6" x 8'7" (max)
Bedroom 3	8'7" x 7'3" (max)
Bathroom	7'3" x 6'11"

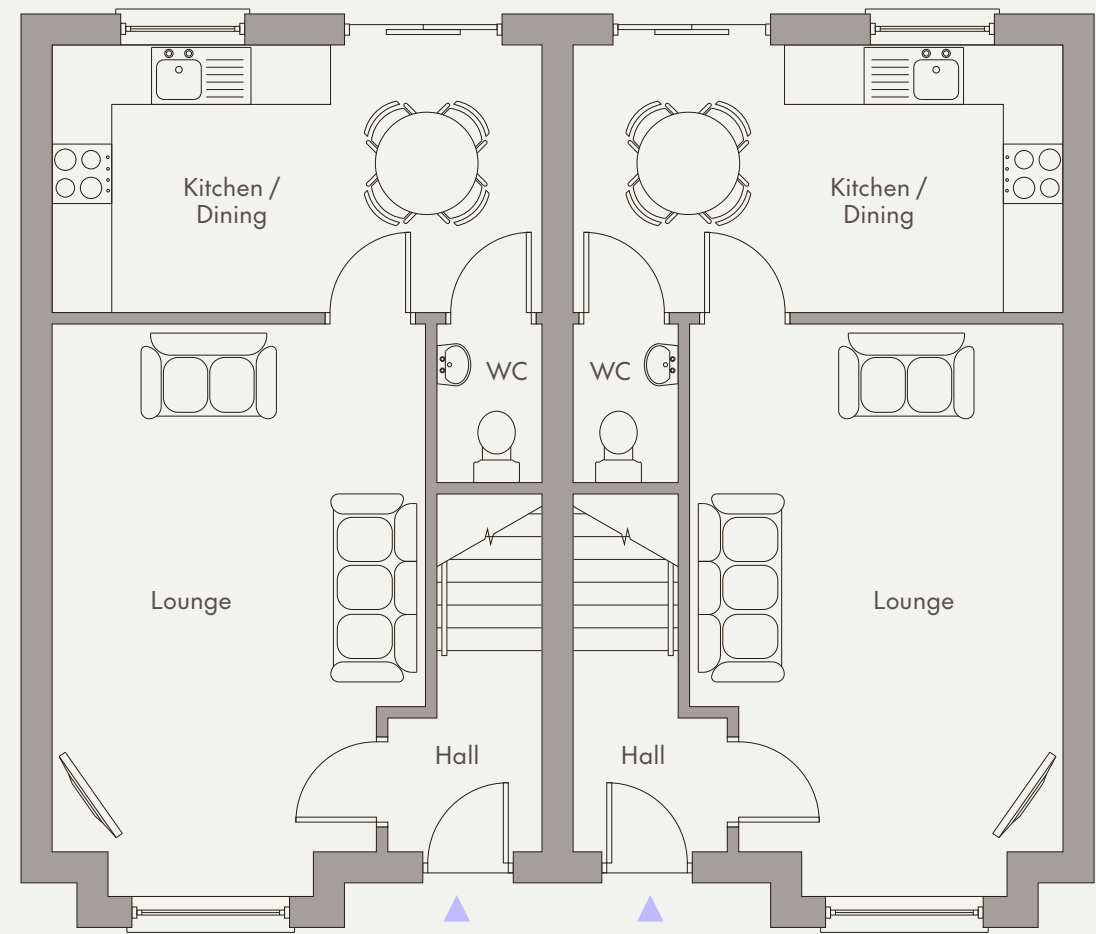
The Soarns

3 Bedroom Semi-Detached
Total Floor Area: 873 sq ft (approx)



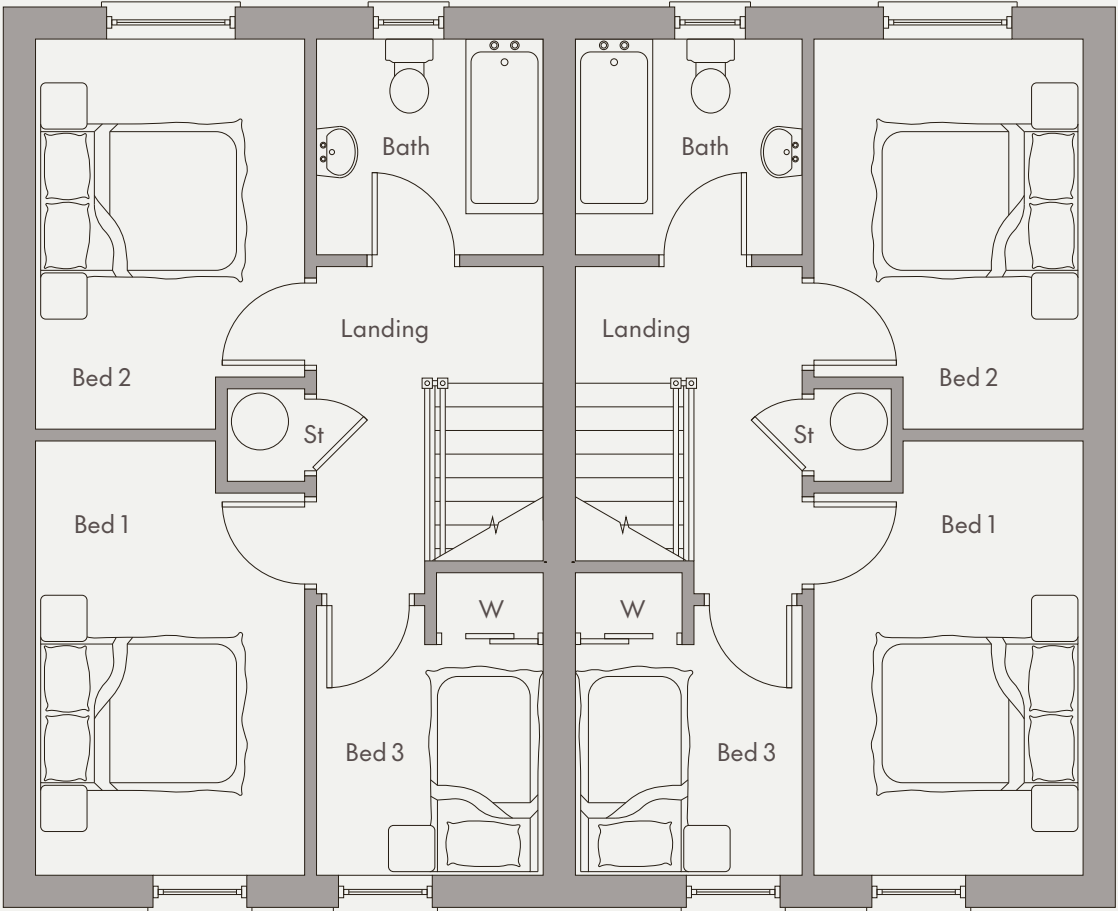
Computer visual

Sites: 19, 20, 26 & 27



Ground floor

Lounge	18'11" x 12'4" (max)
Kitchen / Dining	16'2" x 8'10"
WC	5'3" x 3'6"



First floor

Bedroom 1	13'10" x 8'7" (max)
Bedroom 2	12'6" x 8'7" (max)
Bedroom 3	8'7" x 7'3" (max)
Bathroom	7'3" x 6'11"

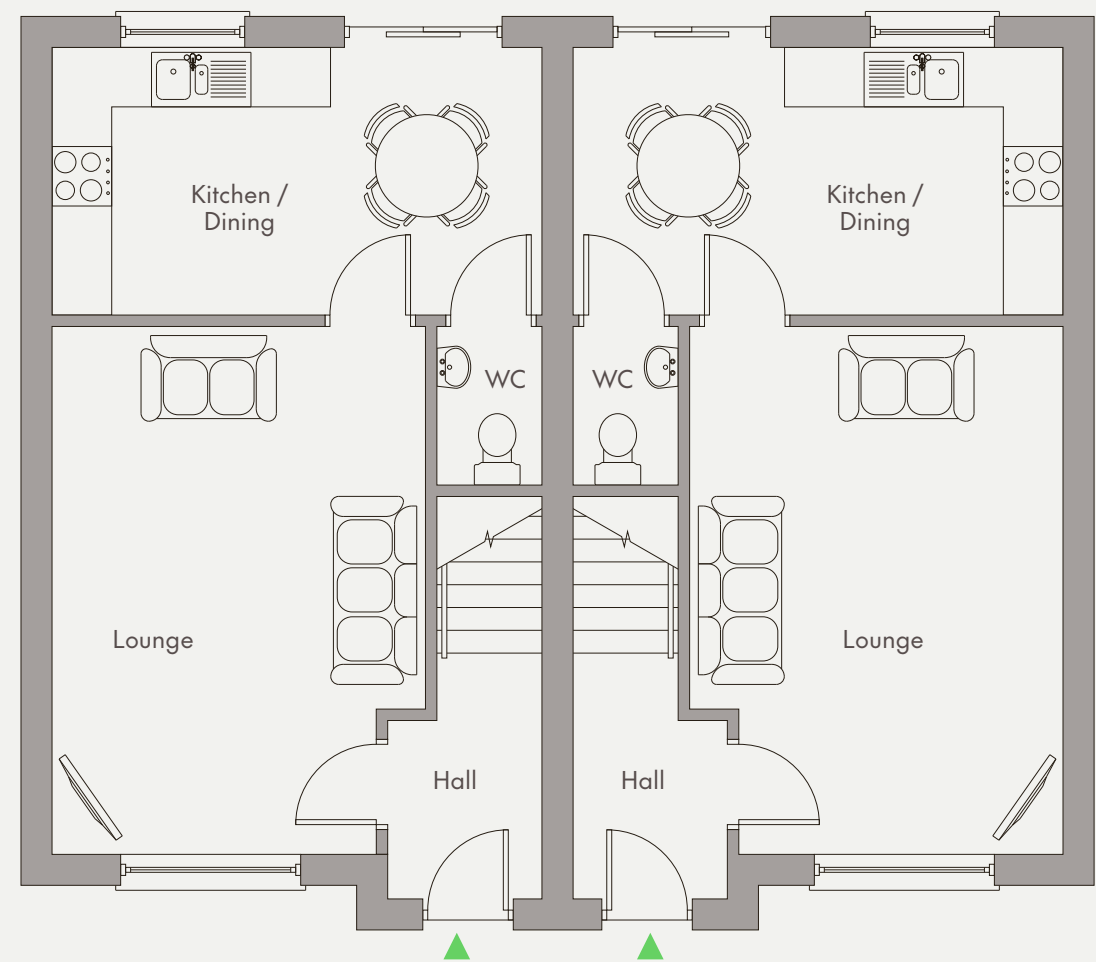
The Trostan

3 Bedroom Semi-Detached
Total Floor Area: 870 sq ft (approx)



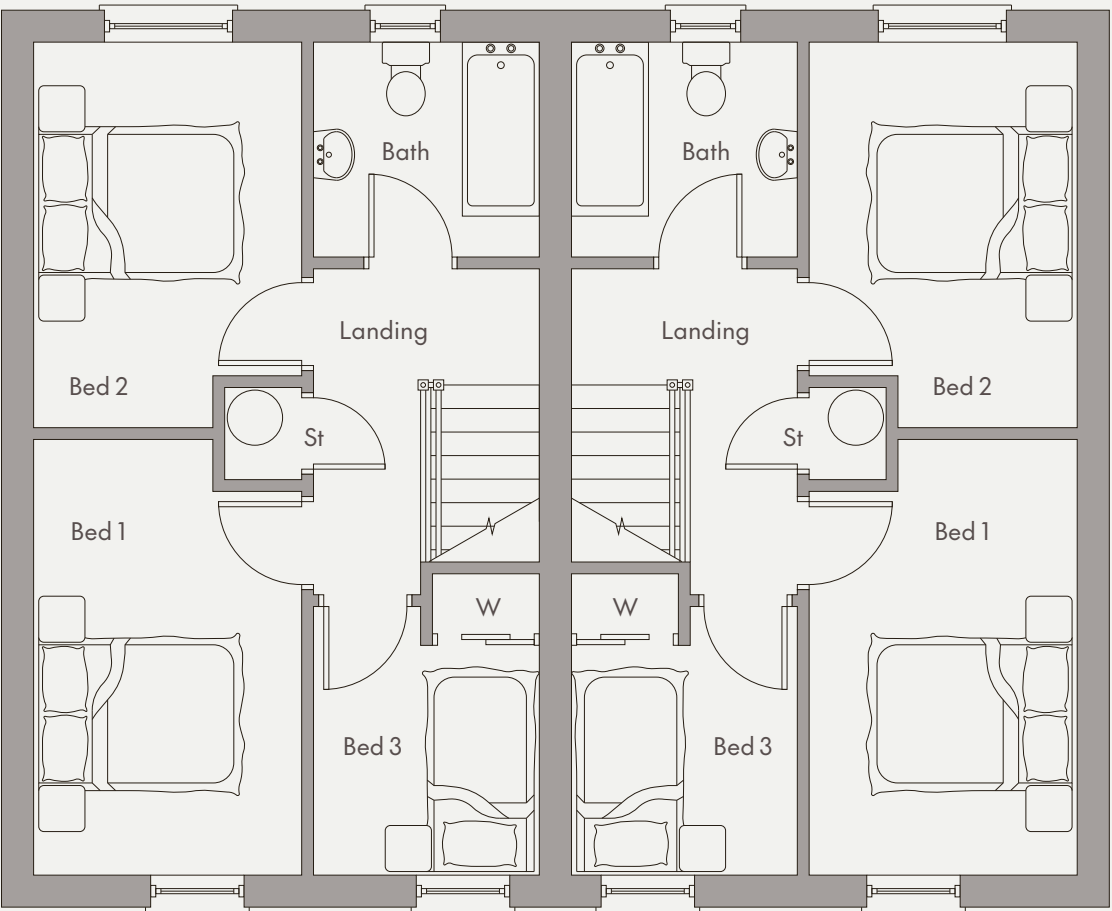
Computer visual

Sites: 21 & 22



Ground floor

Lounge	17'6" x 12'4" (max)
Kitchen / Dining	16'2" x 8'10"
WC	5'3" x 3'6"

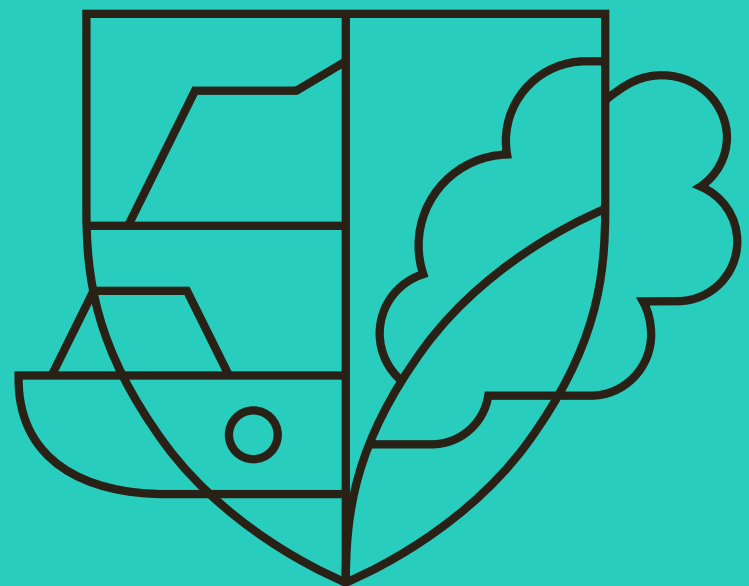


First floor

Bedroom 1	14'0" x 8'7" (max)
Bedroom 2	12'4" x 8'7" (max)
Bedroom 3	8'7" x 7'3" (max)
Bathroom	7'3" x 6'11"

Carncormick Meadow

Your home matters



03.



Your new home in 8 steps:

First-time buyer

Buying your first home is exciting, but knowing where to start can be tricky. That's why we've broken it down into eight simple steps.

First, check if you're eligible for a mortgage. Then, once you've found the right home, secure it with a booking deposit. Our Selling Agent will guide you and request your solicitor's details — if you don't have one, we can recommend trusted options.

Wherever you are on your journey, we're here to help. Let's get you moving!

[See 'First-time buyer guide'](#)

[See 'Existing home owner guide'](#)

1. Secure your mortgage eligibility

2. Choose your home and solicitor

3. Sort your booking and start the process

4. Formalise your mortgage application

5. Select your home finishes

6. Sign your contract and pay deposit

7. Review your final account

8. Completion of your home

Made for living **by Hagan**

1.**Experience that builds better places to live**

With over 37 years of homebuilding behind us, we know what matters. Every home is part of a bigger picture—designed for how people really live, now and in the future.

2.**Beautifully made, built to last**

We set a high bar for quality. Our homes are finished with care, precision and a clear ambition to create something that feels special from day one.

3.**Homes with more vision**

Every layout, detail and finish is shaped by our in-house design team. We focus on flow, character and potential—so your home not only works well, it feels right.

4.**Fairly priced, thoughtfully planned**

We deliver lasting value through good design, lower running costs and homes that hold their worth over time.

5.**Designed efficient**

From insulation to smart heating, our homes retain heat and reduce energy use. Modern systems make life simpler—and more affordable.

6.**We stand by what we build**

Every home comes with two years of cover from Hagan for defects in workmanship or materials. They are also protected by a 10-year NHBC structural warranty.

7.**Support that's genuinely helpful**

We stay involved after you move in, with a dedicated after-sales team and clear, reliable support when you need it most.

8.**Make it your own**

Choose from a wide range of finishes—from worktops to handles and doors. Our visualiser helps you picture your space before it's built.

9.**Part of something bigger**

Our homes are well-placed near schools, shops and green space—and often part of wider regeneration that brings fresh energy to local communities.

10.**A smart move for the future**

With strong resale potential and a reputation for quality, a Hagan home is more than a good place to live—it's a move you can feel confident about.



Support that stays with you

Customer care at Hagan starts the day you reserve your home. From your personal handover with our site team to the welcome pack and walkthrough, we make sure everything feels clear, considered and ready for you.

Every home is carefully inspected before you move in. If anything needs attention, we'll handle it—promptly, with a straightforward process and someone real to talk to.

You're covered too. We take responsibility for any defects in workmanship or materials for the first two years, with NHBC structural protection through to year ten. Appliance warranties are also included.



Because we don't just build homes—we take pride in them. And we look after the people who live in them.

For Hagan, it's personal.



Carncormick Meadow

Visit: haganhomes.co.uk

Contact: **028 9334 2234**

Book a viewing



HAGAN 
It begins at home

Hagan Business Park,
181 Templepatrick Road,
Ballyclare, Antrim, BT39 0RA

JOINT SELLING AGENTS



Edmondson Estates

1 Fenaghy Road,
Ballymena BT42 1HW
Telephone 028 2565 5733
www.edmondsonestates.co.uk



Homes Independent

29 Mill Street,
Ballymena BT43 5AA
Telephone 028 2565 1111
www.homesindependent.co.uk

Please note that any visual or pictorial representations featured in this brochure including 3D computer generated images are intended for illustrative, concept purposes only and are often subject to change. Floor plans and site layouts are not to scale and all dimensions are approximate and subject to change. This brochure does not feature exact location or presence of specific or detailed items such as street lighting, sub stations or full finishes etc. All specific details (chosen plot/immediate boundaries etc.) should be checked with a selling agent, developer, or your legal advisor prior to purchase. Copyright notice: All rights reserved. The contents of this brochure may not be reproduced, copied, redistributed, or otherwise made available in whole or part without the prior written consent from Hagan Homes Ltd.