



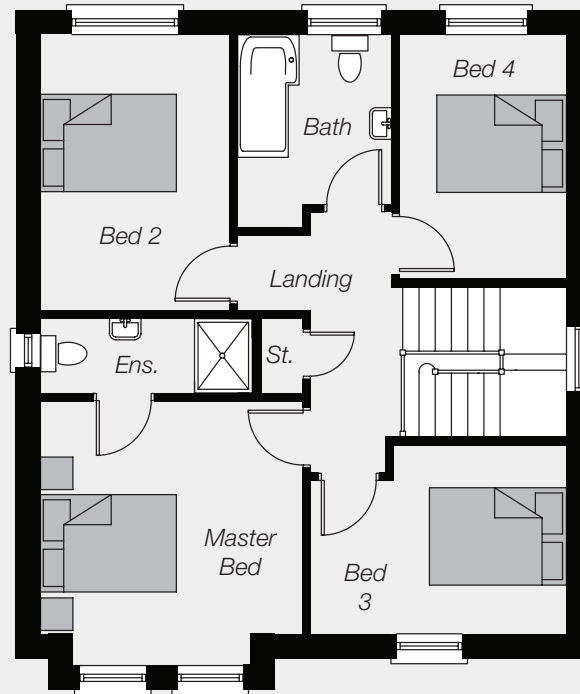
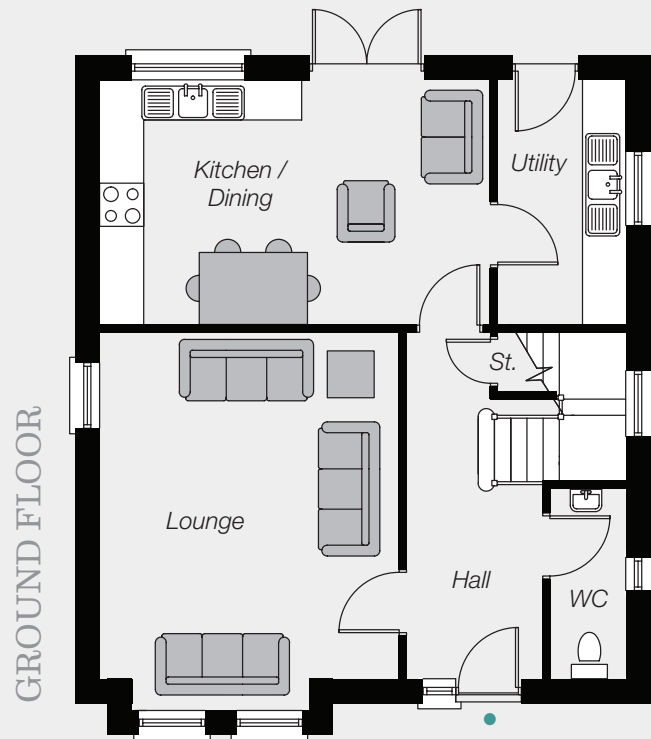
Computer visual.

TYPE B

THE
GALLOWAY
PHASE AT
WOODBROOK

Ballinderry Road
Lisburn

Site Number: 221



TOTAL FLOOR AREA

1,298 sq. ft. approx.



Simon Brien Residential
 525 Lisburn Road
 Belfast BT9 7GQ
Telephone 028 9066 8888
Email southbelfast@simonbrien.com

www.simonbrien.com



Computer visual.

GROUND FLOOR

Entrance Hall (with separate WC)
 Lounge (inc Bay) 16'11" x 13'5"
 Kitchen/Dining 17'6" x 10'11"

FIRST FLOOR

Master Bedroom (max) 11'9" x 11'9"
 Ensuite
 Bedroom 2 12'4" x 8'4"
 Bedroom 3 11'5" x 8'5"
 Bedroom 4 10'11" x 7'4"
 Bathroom

These particulars do not constitute any part of an offer or contract. None of the statements contained in these particulars are to be relied on as statements or representations of fact and intending purchasers must satisfy themselves by inspection or otherwise as to the correctness of each of the statements contained in these particulars. All measurements of area are quoted as Net Sales Area which is calculated in accordance with the RICS Code of Measuring Practice (6th Edition) APP 21. Configurations of kitchens, bathrooms and wardrobes may be subject to alteration from those illustrated without prior notification. Purchasers should satisfy themselves as to the current specification at the time of booking. The Vendor does not make or give, and neither the Selling Agent, nor any person in their employment, has any authority to make or give any representation or warranty whatever in relation to any property. Computer visuals are for illustration only. Plans are not to scale and all dimensions shown are approximate.



www.laganhomes.com