



LANYON HOMES



ORCHARD HALL

CASTLEHILL WOOD, STORMONT



HÖME

IS WHERE THE HEART IS

Orchard Hall sits at the heart of Castlehill Wood and provides an extensive portfolio of one and two bedroom apartment homes that fuse the character and charm synonymous with this part of East Belfast with modern functionality, smart technology and innovative design.

Following the fundamentals of the Lanyon Homes ethos, we have created homes ideally suited to the discerning buyer who wants a unique residence in an exceptional location.

Offering one and two-bedroom formats, this stand-alone block of only sixteen luxury apartments benefits from innovative layouts that fuse natural light with exquisite

kitchens, living areas, and bathrooms to provide a range of unique residences ideally suited to a wide spectrum of potential purchasers.

Each home will feature some of the most innovative smart home devices available on the market today with range of sensors and controls to meet lifestyle needs and manage energy.



LANYON HOMES

At Lanyon Homes our top priority is ensuring that all our buyers, in all of our developments, experience the smoothest possible move into their new home.

We make every effort to take care of everything our buyers require to ensure a successful handover. Our aim is to take care of even the smallest details, enabling you to enjoy an exciting and positive home-buying experience.

Our team will provide as much, or as little, assistance as necessary. Whether you're a first-time buyer or seasoned mover, we'll be here when you need us.

We're conscious that the demands of homeowners are continually evolving and at Orchard Hall, as part of The Lanyon Homes Promise, we are providing a range of options and services to ensure you can get the most out of your home from the moment you turn your key in the door for the first time.



SUBLIME STORMONT

Enjoy the stunning views over Belfast atop Prince of Wales Avenue as Stormont House towers behind you, while away hours with the family exploring Stormont Estate and adventuring in the newly refurbished Mo Mowlam Park or just relax with some award-winning coffee and snacks at The General Merchant bistro/cafe.

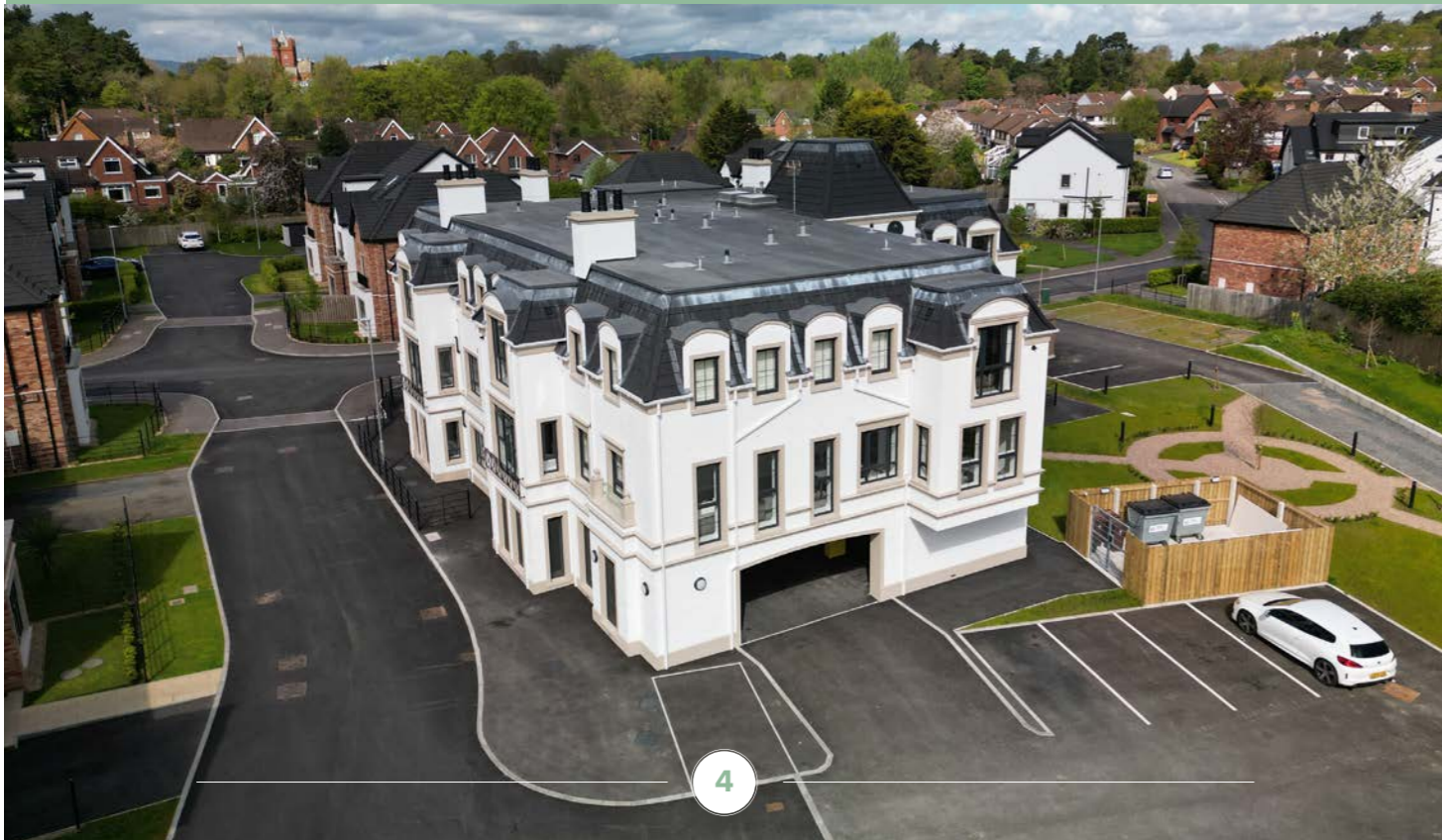
Set alongside towering oaks and cedars that form the perimeter of the historic Stormont Estate, Orchard Hall is nestled within Castlehill Wood and offers a range of exclusive apartments in one of Belfast's most desirable locations.

Providing a sanctuary of peace and quiet, more akin to a development in a rural County Down village, Castlehill Wood is accessed from the mature and leafy Castlehill Road just ten minutes drive from Belfast City Centre.

This unique development offers owners the opportunity to live within a few minutes walk of the stunning Stormont Estate amongst some of the province's leading primary and post-primary schools.

East Belfast offers a plethora of coffee shops, boutiques and some of Belfast's most exclusive restaurants and bars in the vibrant communities of Ballyhackamore and Belmont, both of which have experienced a stunning renaissance throughout the last decade.

Hopping on the newly installed Translink Glider service provides access further afield to Belfast City Centre, Belfast City Airport, and Titanic Quarter while the renowned coastal town of Holywood is also easily accessed by car or public transport.





SPECIFICATION

INTERNAL

- All internal walls and ceilings painted throughout.
- Painted moulded skirting, architraves, stair handrails and balustrades.
- Comprehensive range of electrical sockets, switches, TV, telephone points throughout in flush fitting, including Cat6 wiring throughout.
- Mains supply smoke and heat detectors as standard.
- Gas heating.
- Doors throughout are white 4 panel door with chrome ironmongery.
- Smart tech-controlled heating & lighting

KITCHENS

- Luxury handmade kitchens with soft close doors and drawers.
- Quartz stone worktops & upstand.
- Branded appliances include gas hob, electric oven, integrated fridge freezer, washer dryer & dishwasher.

FLOOR COVERINGS & TILES

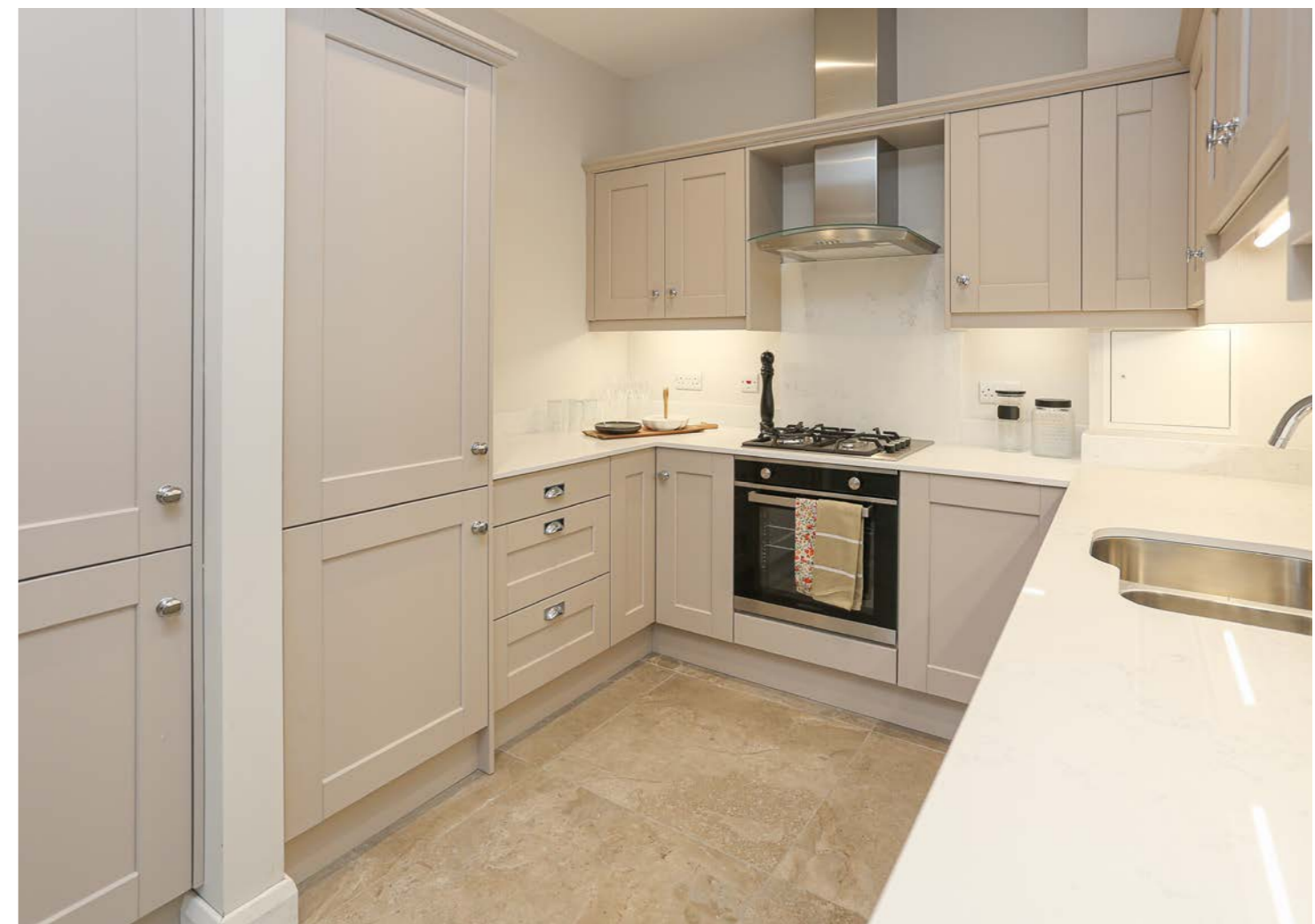
- Luxury porcelain floor tiling to hallway, cloakroom, kitchen/dining, and lounge.
- Carpets to bedrooms.

WARRANTY

- NHBC 10 year warranty.

BATHROOMS, EN-SUITES & W.C.'S

- Heated towel rails.
- Soaker tubs where applicable.
- Walk in showers with drencher shower head and handheld shower.
- Recessed shower shelves (where applicable).
- Roca and Laufen branded sanitaryware with vanity units to all basins.
- Branded brassware throughout.
- LED sensor operated mirrors with a lit mirrored cabinet to the master ensuite.
- Pocket doors to bathroom & ensuite where applicable.







ORCHARD HALL

CASTLEHILL WOOD, STORMONT



GROUND FLOOR

ORCHARD HALL

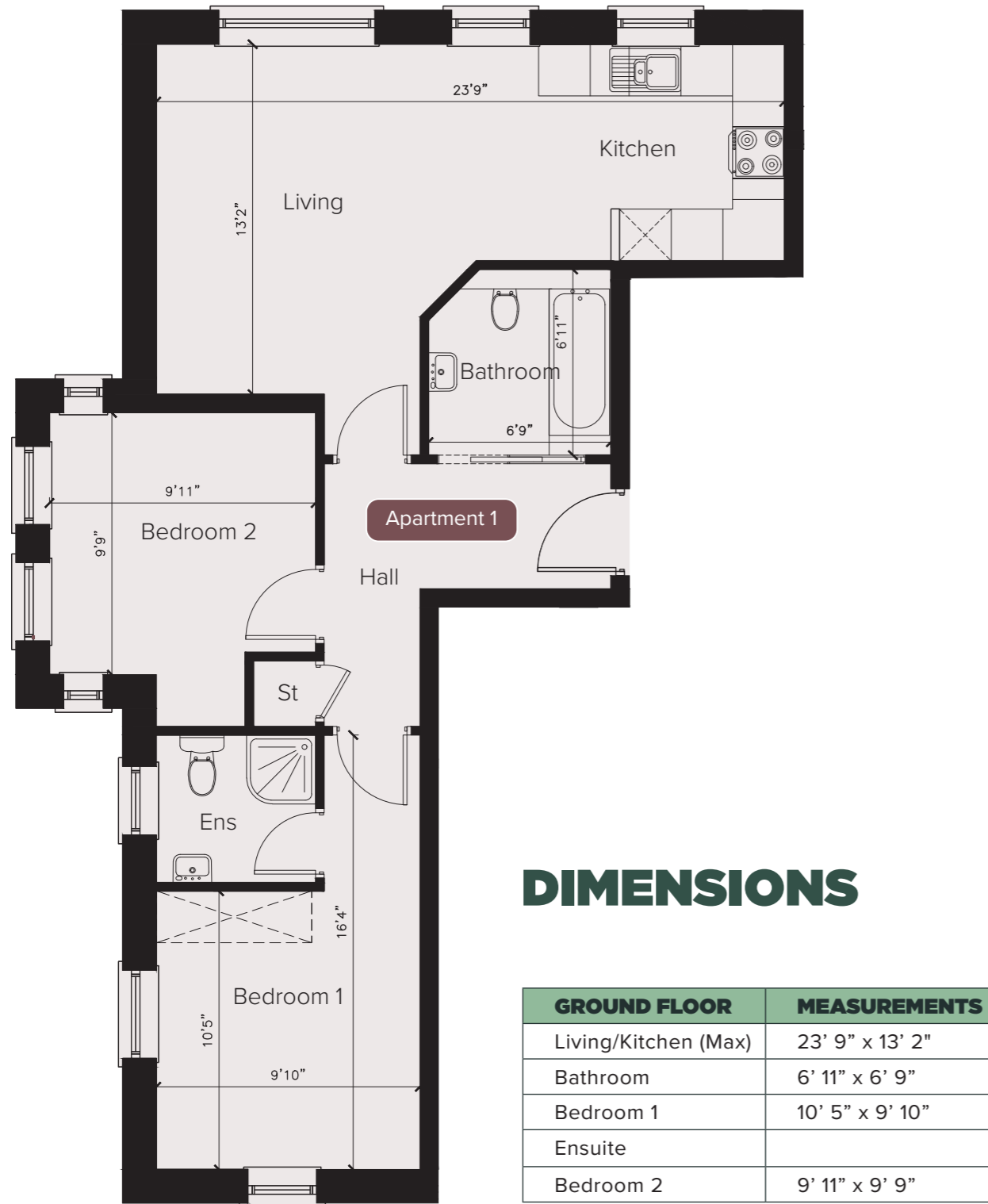
CASTLEHILL WOOD, STORMONT

GROUND FLOOR OVERVIEW

NO	SQ FT	BEDROOMS
1	660	2 BED + ENSUITE
2	726	2 BED + ENSUITE
3	726	2 BED + ENSUITE
4	692	2 BED + ENSUITE



APARTMENT ONE



2 BEDROOMS
+ ENSUITE



GROUND
FLOOR

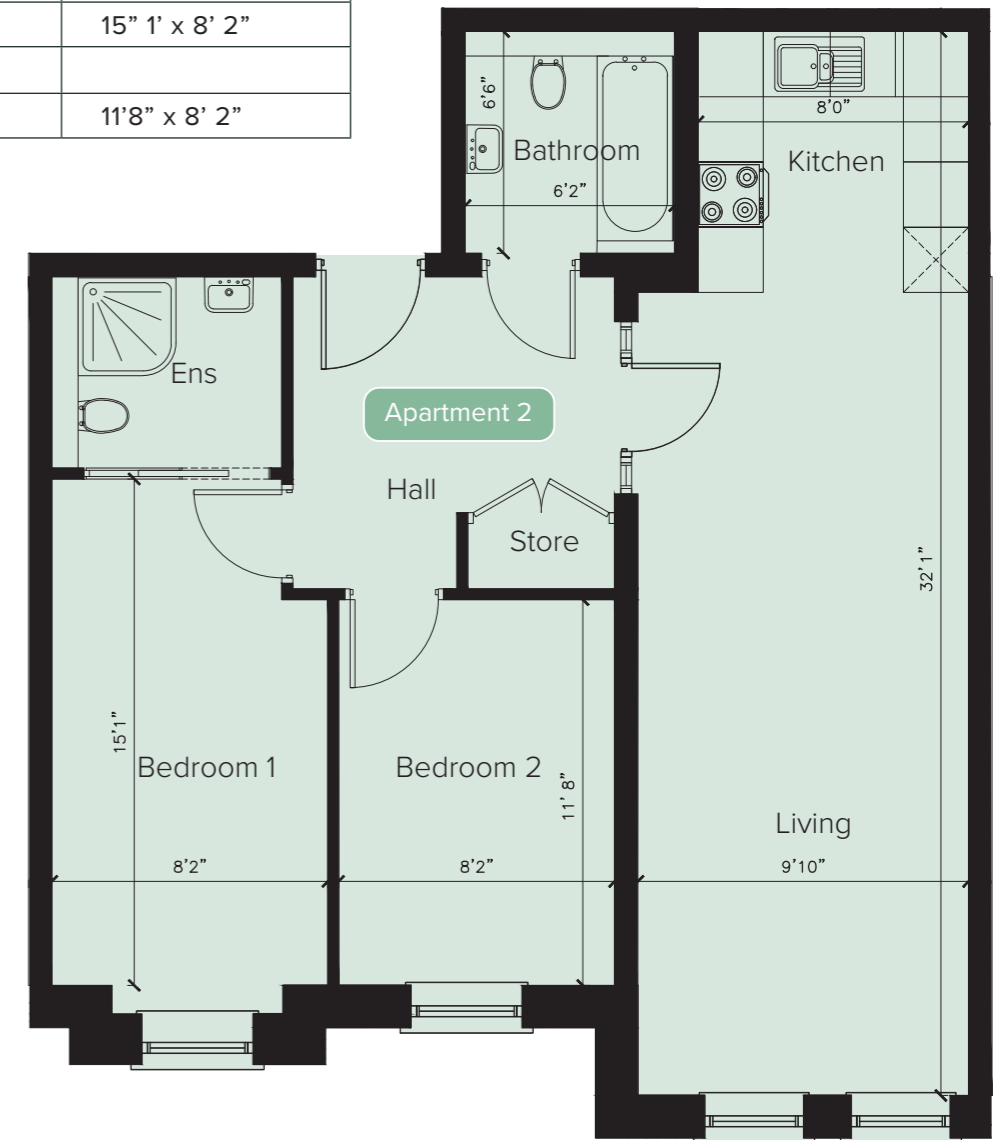


660
SQ FT

APARTMENT TWO

DIMENSIONS

GROUND FLOOR	MEASUREMENTS
Living/Kitchen (Max)	32' 1" x 9' 10"
Bathroom	6' 6" x 6' 2"
Bedroom 1	15' 1" x 8' 2"
Ensuite	
Bedroom 2	11' 8" x 8' 2"



2 BEDROOMS
+ ENSUITE



GROUND
FLOOR

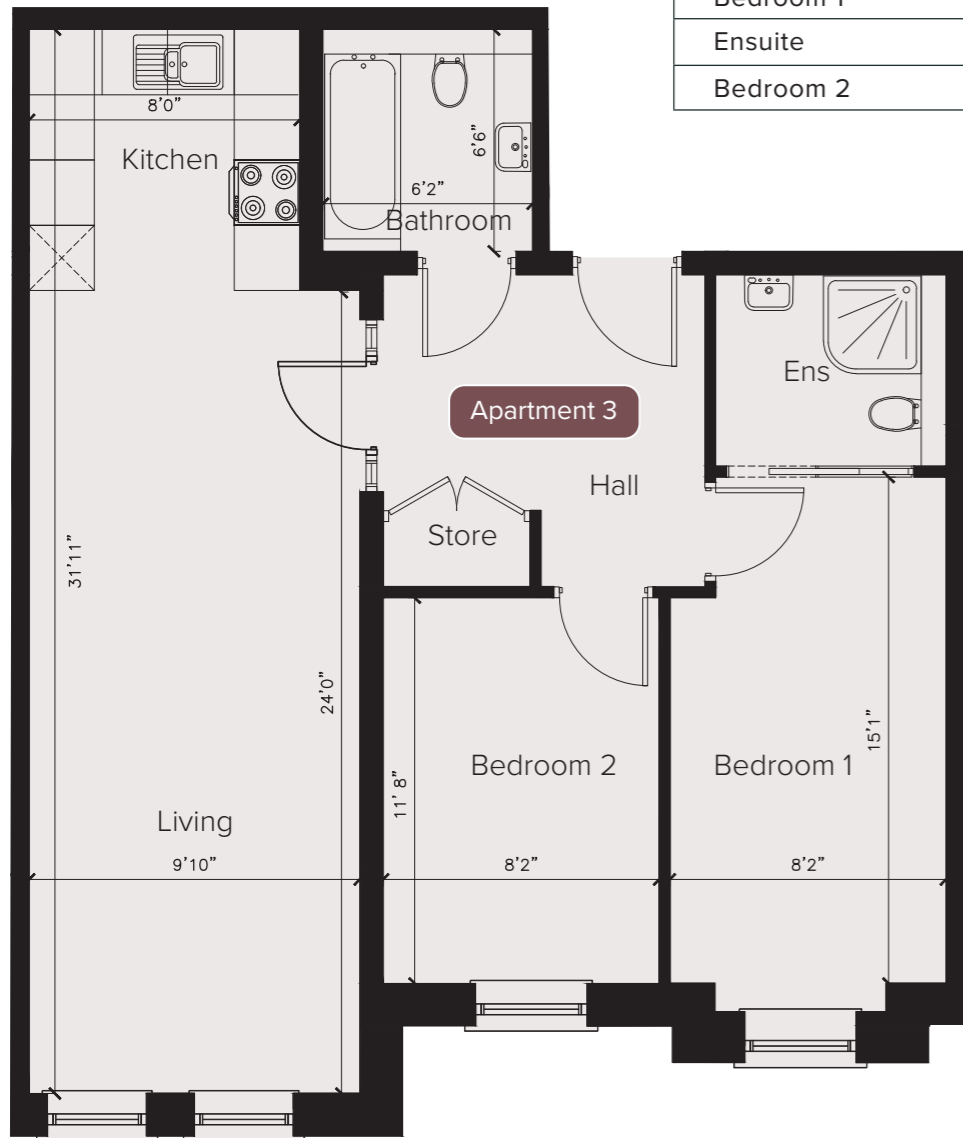


726
SQ FT

APARTMENT THREE

DIMENSIONS

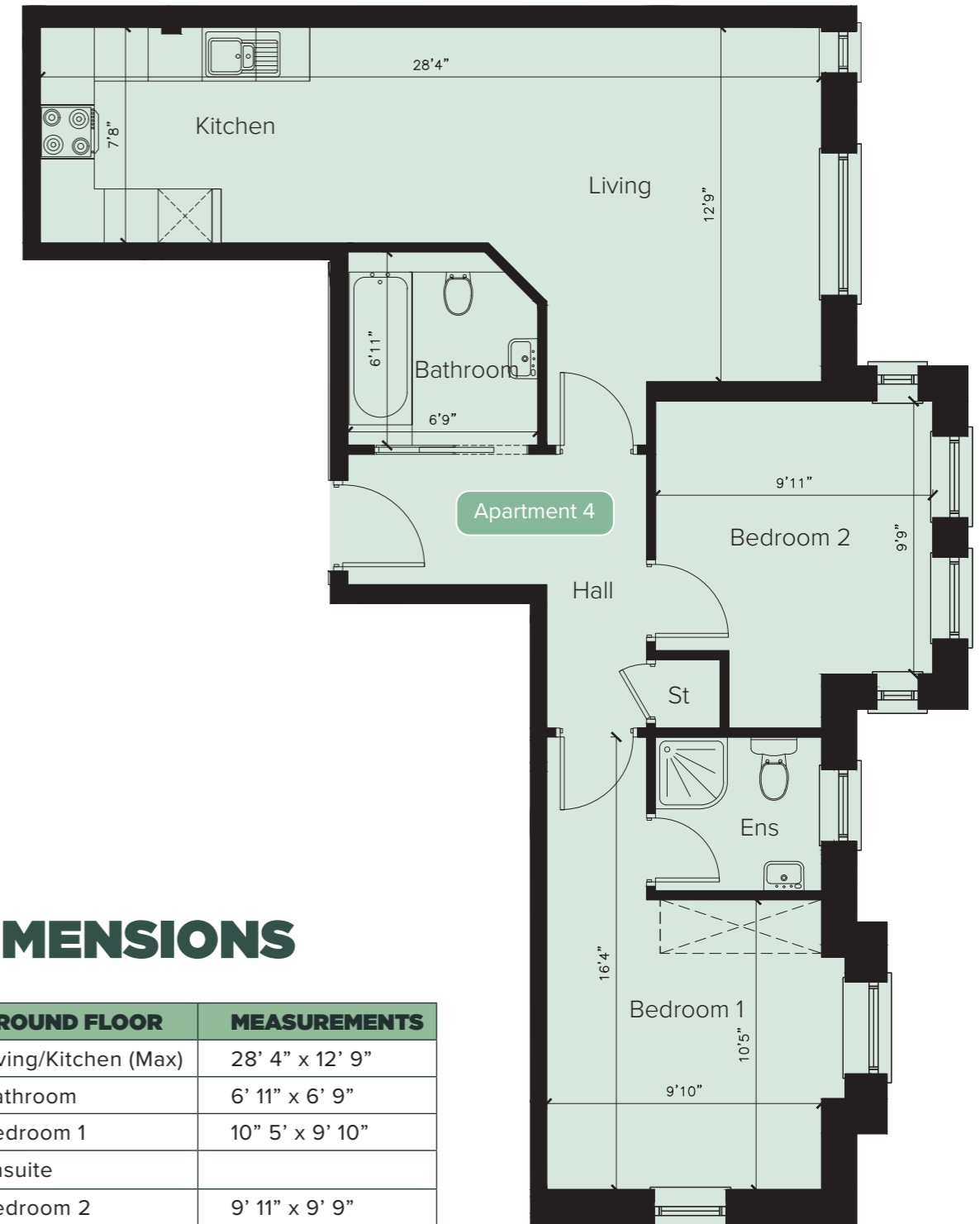
GROUND FLOOR	MEASUREMENTS
Living/Kitchen (Max)	31' 11" x 9' 10"
Bathroom	6' 6" x 6' 2"
Bedroom 1	15' 4" x 8' 2"
Ensuite	
Bedroom 2	11' 8" x 8' 2"



APARTMENT FOUR

DIMENSIONS

GROUND FLOOR	MEASUREMENTS
Living/Kitchen (Max)	28' 4" x 12' 9"
Bathroom	6' 11" x 6' 9"
Bedroom 1	10" 5" x 9' 10"
Ensuite	
Bedroom 2	9' 11" x 9' 9"



2 BEDROOMS + ENSUITE

GROUND FLOOR

726 SQ FT

2 BEDROOMS + ENSUITE

GROUND FLOOR

692 SQ FT



FIRST FLOOR

ORCHARD HALL

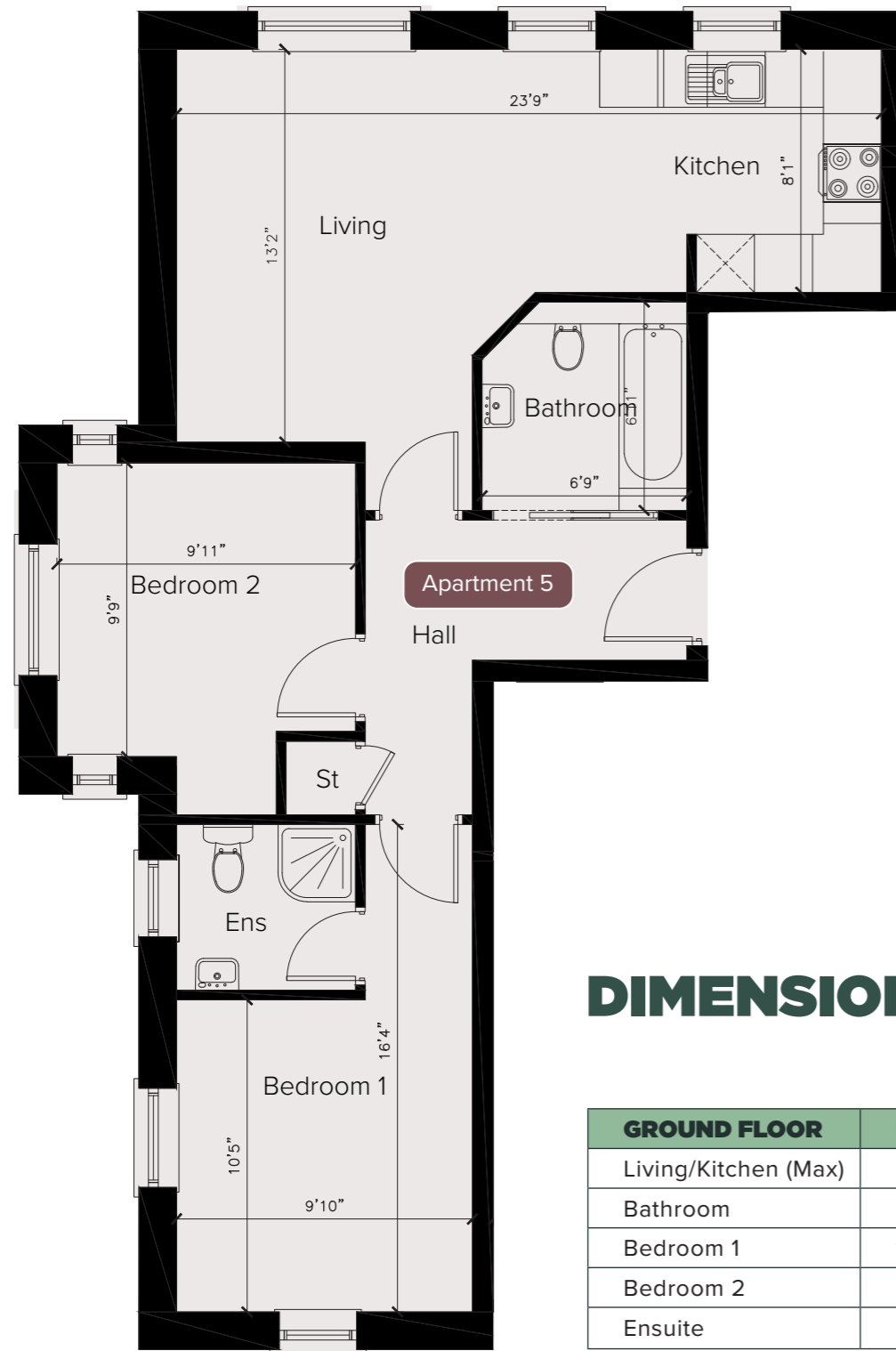
CASTLEHILL WOOD, STORMONT

FIRST FLOOR OVERVIEW

NO	SQ FT	BEDROOMS
5	659	2 BED + ENSUITE
6	722	2 BED + ENSUITE
7	722	2 BED + ENSUITE
8	674	2 BED + ENSUITE
9	690	1 BED
10	816	2 BED



APARTMENT FIVE



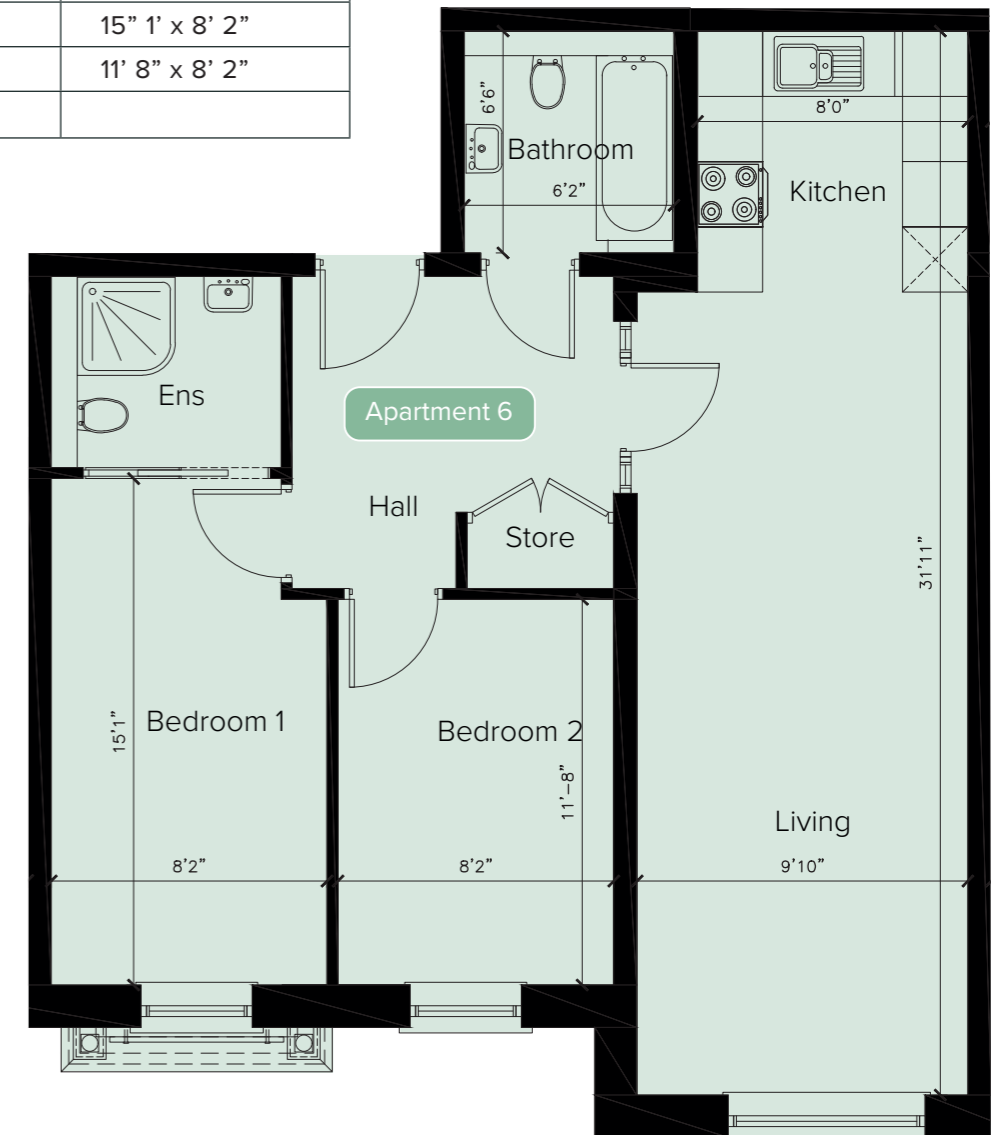
DIMENSIONS

GROUND FLOOR	MEASUREMENTS
Living/Kitchen (Max)	23' 9" x 13' 2"
Bathroom	6' 11" x 6' 9"
Bedroom 1	10' 5" x 9' 10"
Bedroom 2	9' 11" x 9' 9"
Ensuite	

APARTMENT SIX

DIMENSIONS

GROUND FLOOR	MEASUREMENTS
Living/Kitchen (Max)	31' 11" x 9' 10"
Bathroom	6' 6" x 6' 2"
Bedroom 1	15' 1" x 8' 2"
Bedroom 2	11' 8" x 8' 2"
Ensuite	



2 BEDROOMS
+ ENSUITE

FIRST
FLOOR

659
SQ FT

2 BEDROOMS
+ ENSUITE

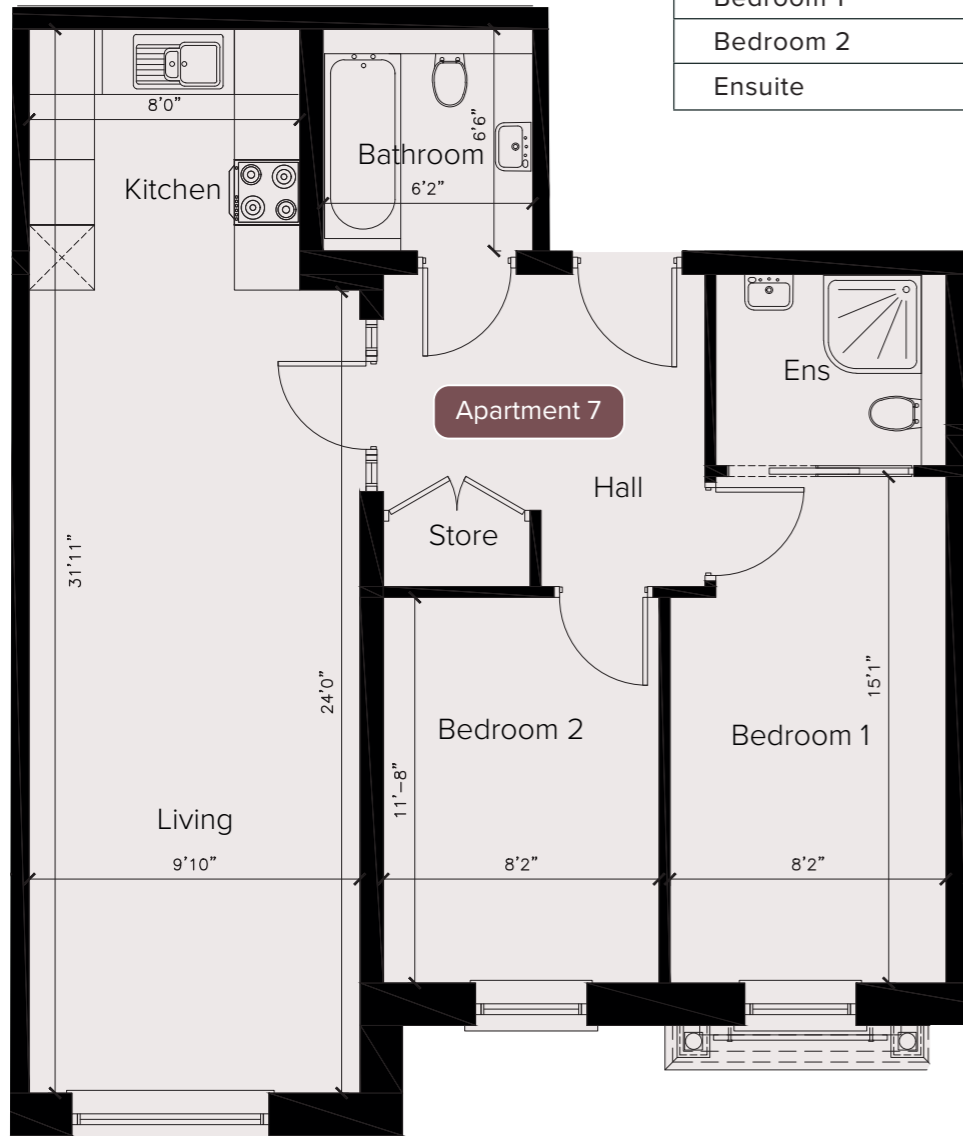
FIRST
FLOOR

722
SQ FT

APARTMENT SEVEN

DIMENSIONS

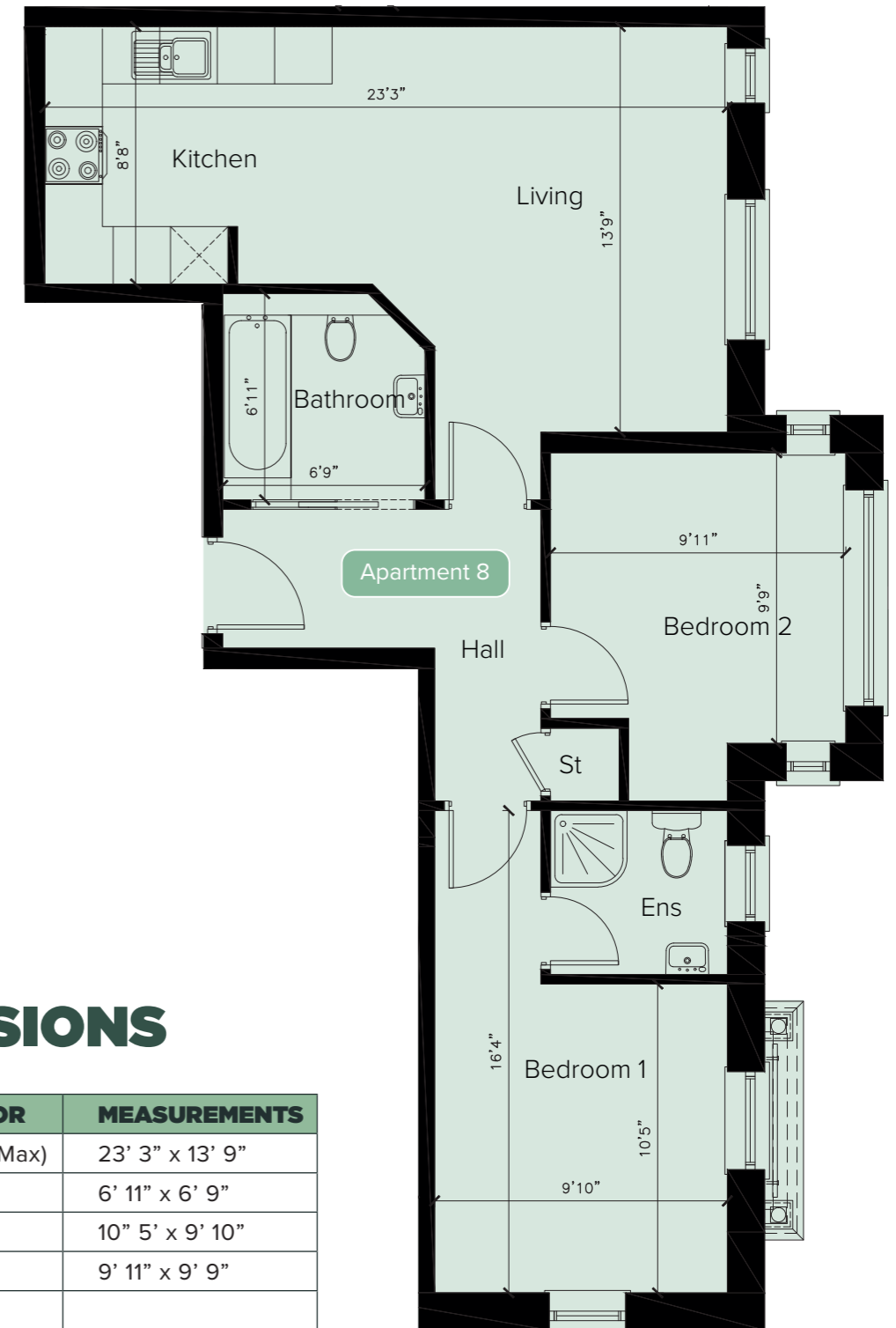
GROUND FLOOR	MEASUREMENTS
Living/Kitchen (Max)	31' 11" x 9' 10"
Bathroom	6' 6" x 6' 2"
Bedroom 1	15' 1" x 8' 2"
Bedroom 2	11' 8" x 8' 2"
Ensuite	




APARTMENT EIGHT

DIMENSIONS


GROUND FLOOR	MEASUREMENTS
Living/Kitchen (Max)	23' 3" x 13' 9"
Bathroom	6' 11" x 6' 9"
Bedroom 1	10' 5" x 9' 10"
Bedroom 2	9' 11" x 9' 9"
Ensuite	



 2 BEDROOMS + ENSUITE

 FIRST FLOOR

 722 SQ FT

 2 BEDROOMS + ENSUITE

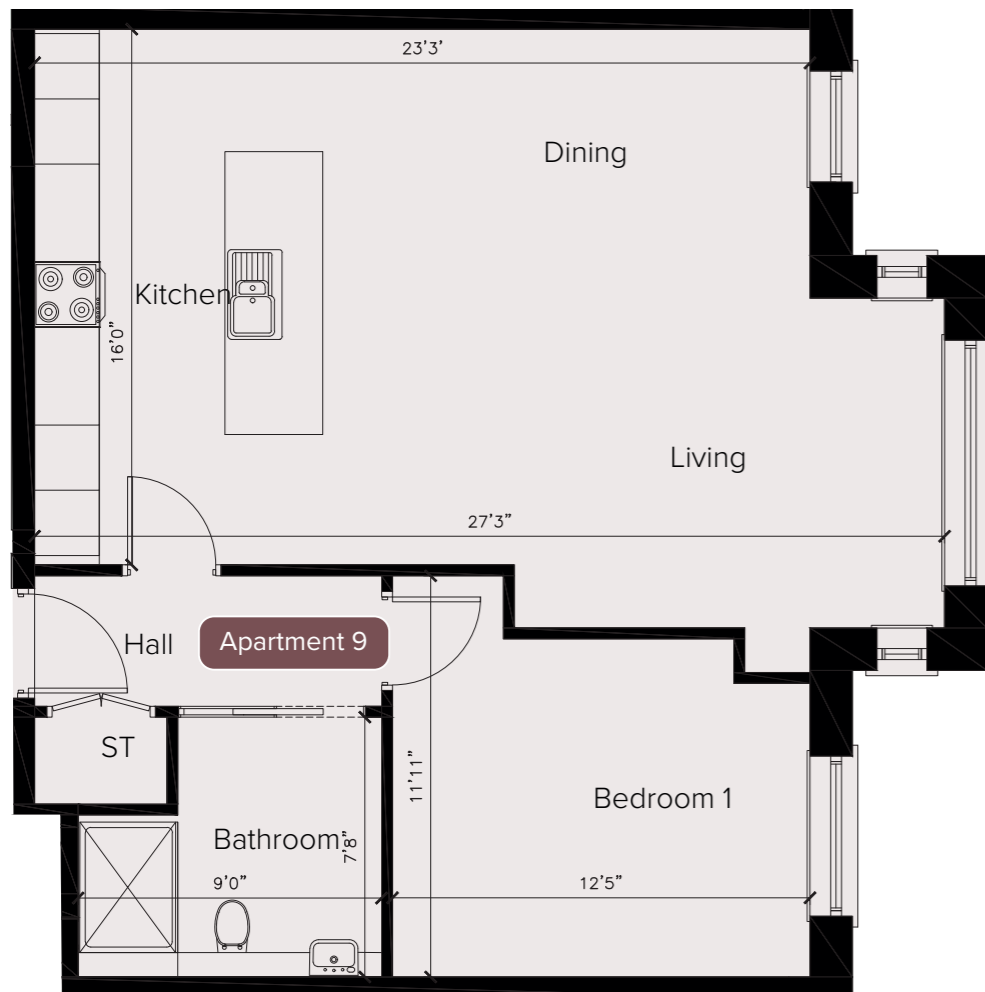
 FIRST FLOOR

 674 SQ FT

APARTMENT NINE

DIMENSIONS

GROUND FLOOR	MEASUREMENTS
Living/Kitchen (Max)	27' 3" x 16' 0"
Bathroom	9' 0" x 7' 8"
Bedroom 1	12' 5" x 11' 11"



APARTMENT TEN

DIMENSIONS

GROUND FLOOR	MEASUREMENTS
Living/Kitchen (Max)	39' 8" x 13' 1"
Bathroom	9' 3" x 7' 10"
Bedroom 1	13' 0" x 10' 5"
Bedroom 2	7' 7" x 11' 4"



 1
BEDROOM

 FIRST
FLOOR

 690
SQ FT

 2
BEDROOMS

 FIRST
FLOOR

 816
SQ FT



SECOND FLOOR

ORCHARD HALL

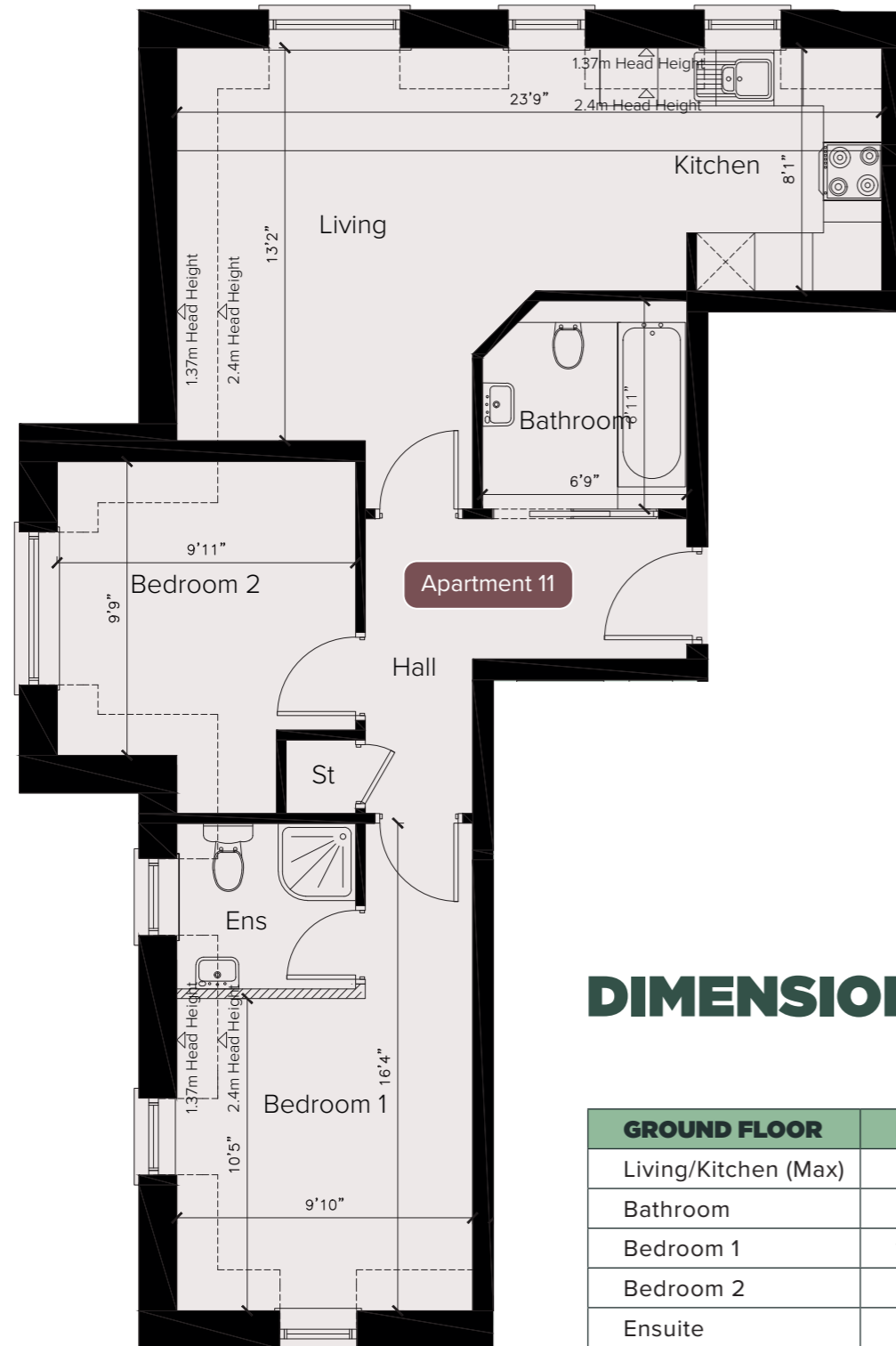
CASTLEHILL WOOD, STORMONT

SECOND FLOOR OVERVIEW

NO	SQ FT	BEDROOMS
11	659	2 BED + ENSUITE
12	722	2 BED + ENSUITE
13	722	2 BED + ENSUITE
14	674	2 BED + ENSUITE
15	690	1 BED
16	816	2 BED



APARTMENT ELEVEN



DIMENSIONS

GROUND FLOOR	MEASUREMENTS
Living/Kitchen (Max)	23' 9" x 13' 2"
Bathroom	6' 11" x 6' 9"
Bedroom 1	10' 5" x 9' 10"
Bedroom 2	9' 11" x 9' 9"
Ensuite	

2 BEDROOMS + ENSUITE

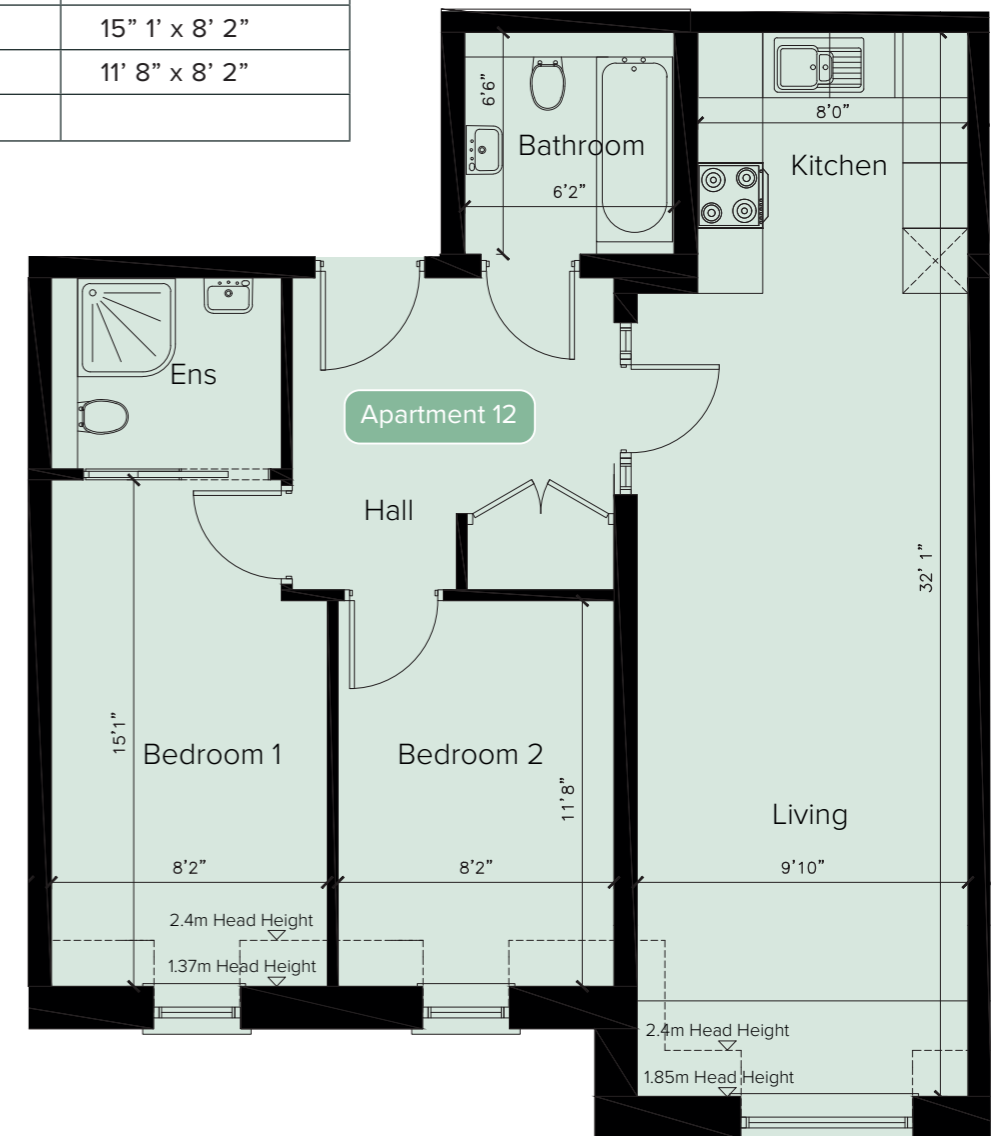
SECOND FLOOR

659 SQ FT

APARTMENT TWELVE

DIMENSIONS

GROUND FLOOR	MEASUREMENTS
Living/Kitchen (Max)	32' 1" x 9' 10"
Bathroom	6' 6" x 6' 2"
Bedroom 1	15' 1" x 8' 2"
Bedroom 2	11' 8" x 8' 2"
Ensuite	



2 BEDROOMS + ENSUITE

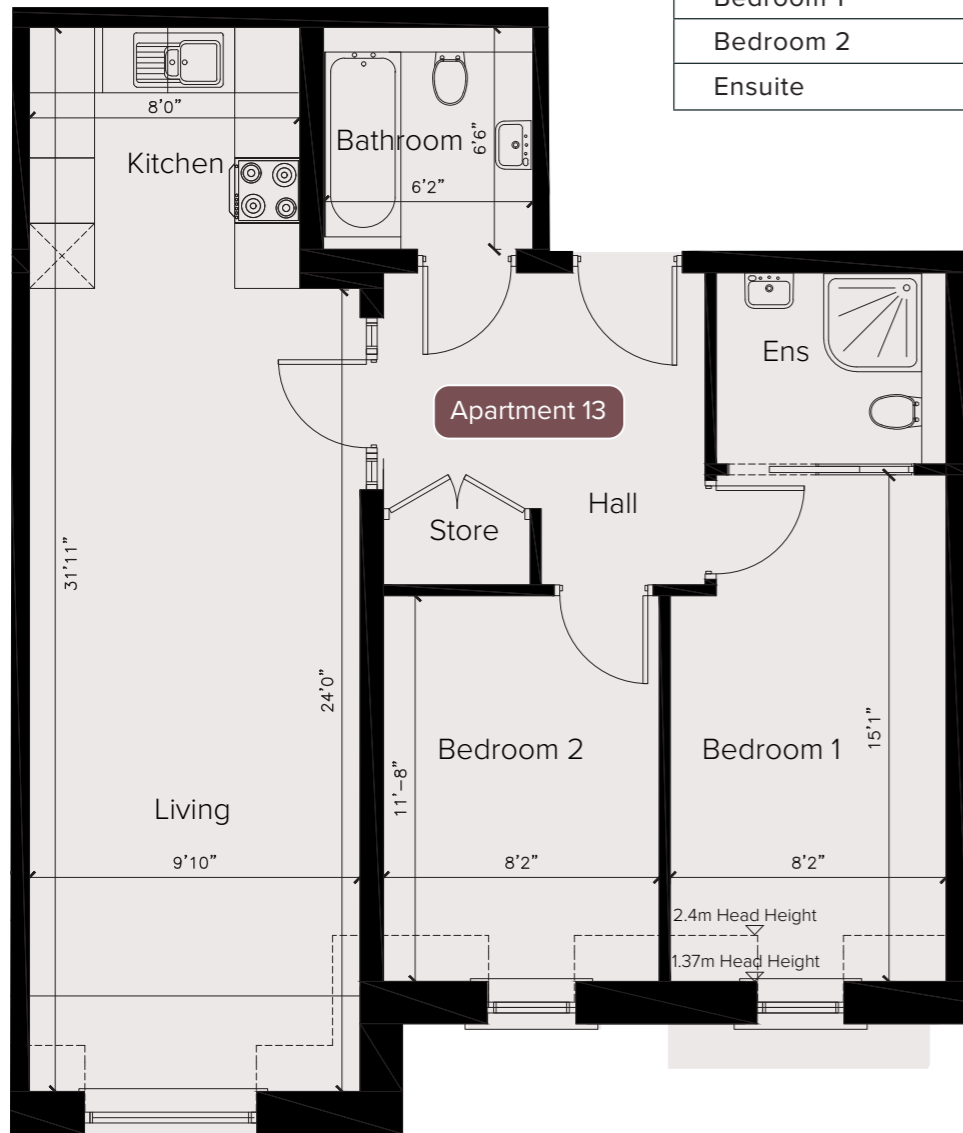
SECOND FLOOR

722 SQ FT

APARTMENT THIRTEEN

DIMENSIONS

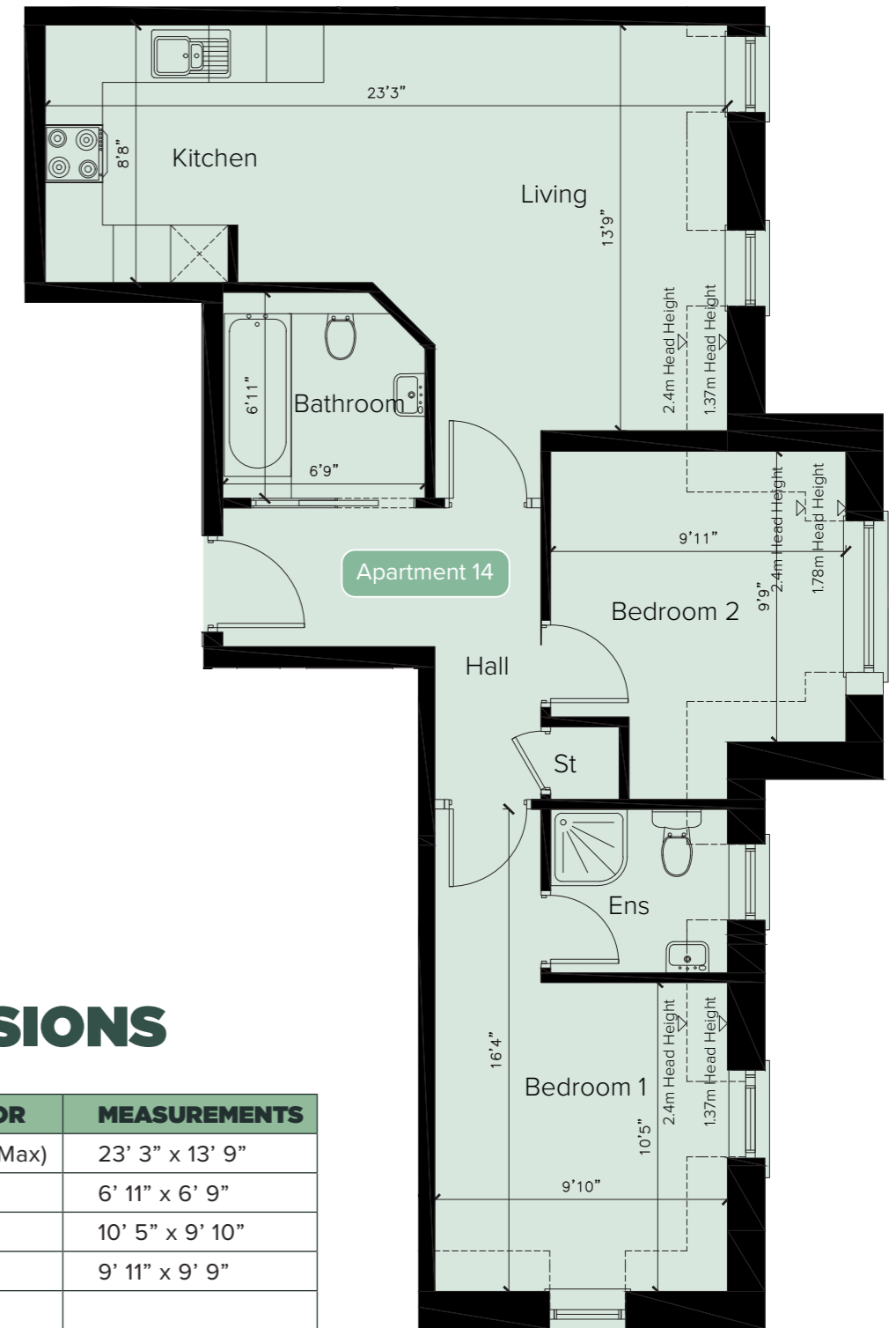
GROUND FLOOR	MEASUREMENTS
Living/Kitchen (Max)	24' 0" x 9' 10"
Bathroom	6' 6" x 6' 2"
Bedroom 1	15' 1" x 8' 2"
Bedroom 2	11' 8" x 8' 2"
Ensuite	



APARTMENT FOURTEEN

DIMENSIONS

GROUND FLOOR	MEASUREMENTS
Living/Kitchen (Max)	23' 3" x 13' 9"
Bathroom	6' 11" x 6' 9"
Bedroom 1	10' 5" x 9' 10"
Bedroom 2	9' 11" x 9' 9"
Ensuite	



2 BEDROOMS + ENSUITE

SECOND FLOOR

722 SQ FT

2 BEDROOMS + ENSUITE

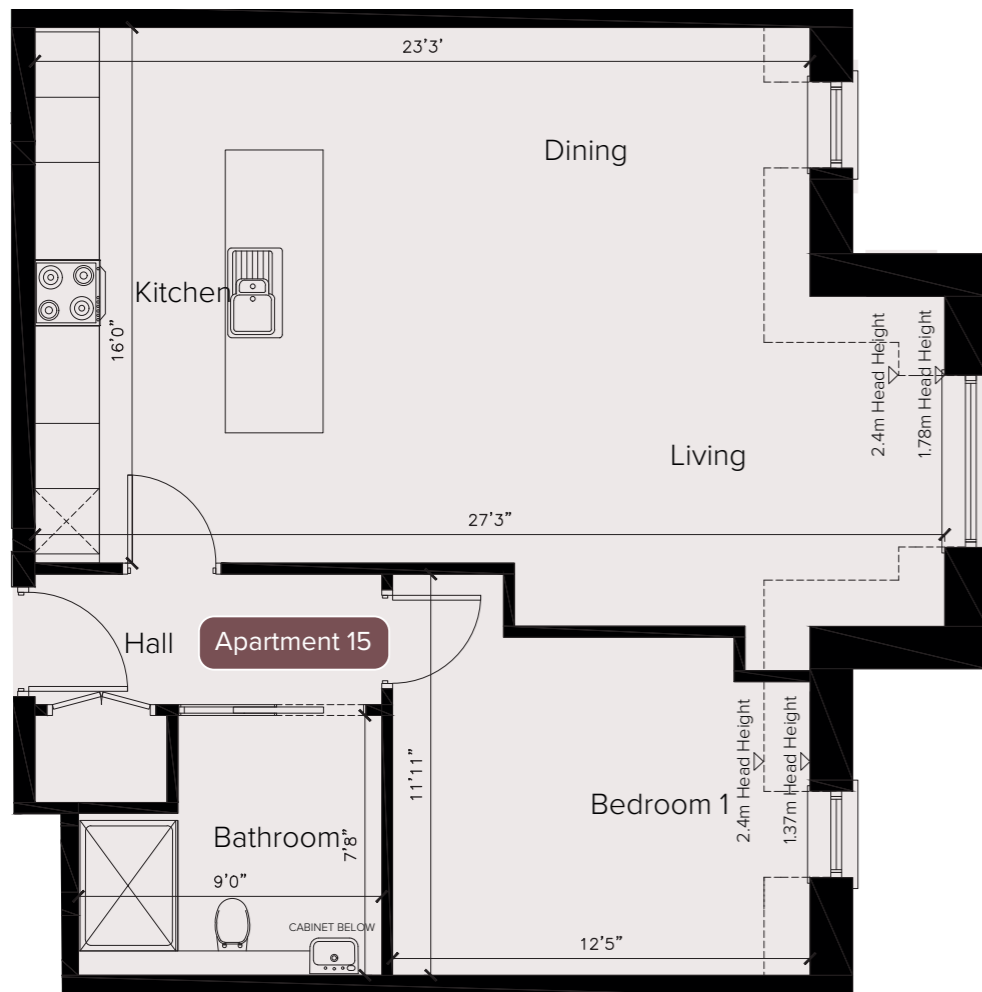
SECOND FLOOR

674 SQ FT

APARTMENT FIFTEEN

DIMENSIONS

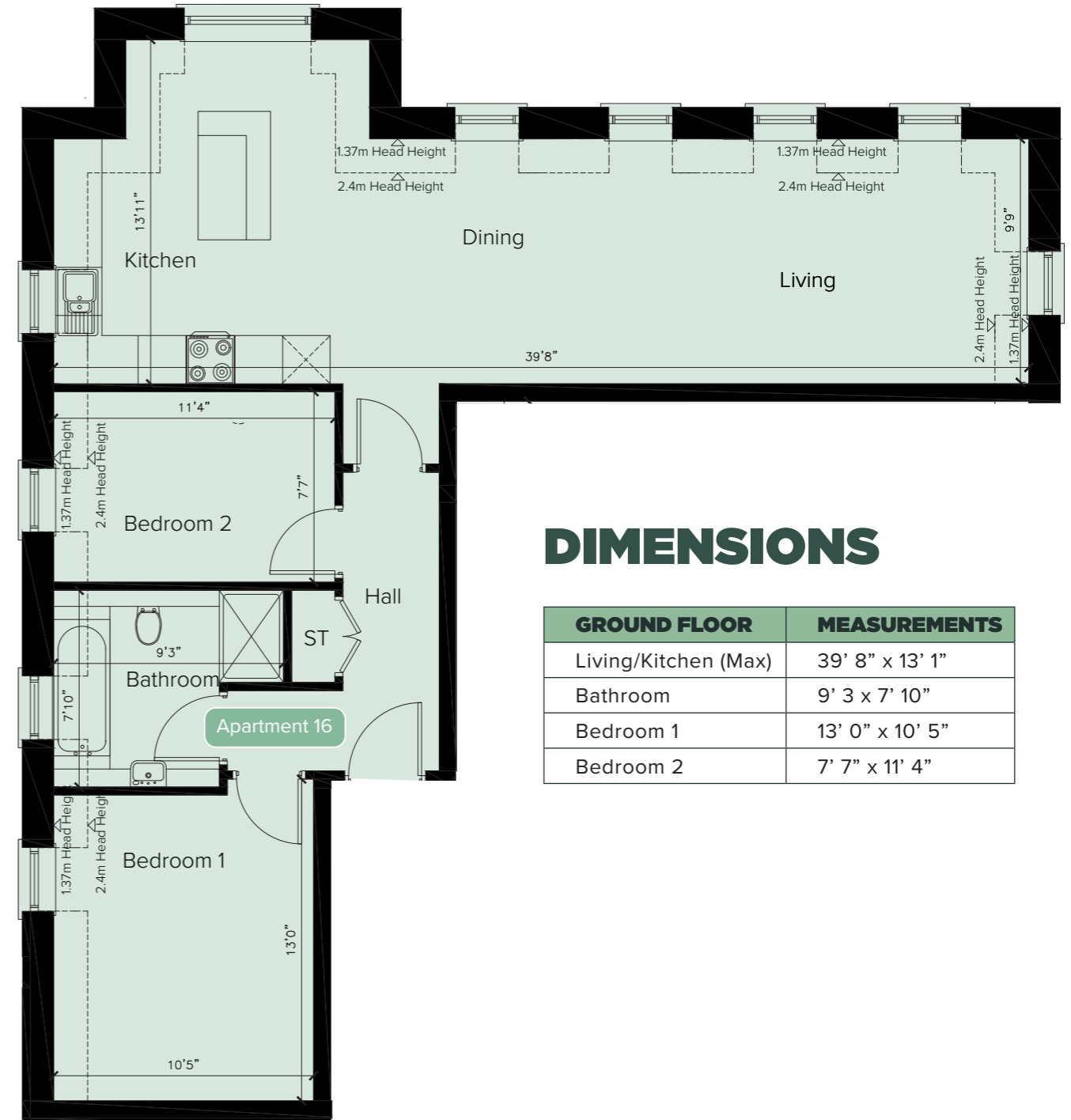
GROUND FLOOR	MEASUREMENTS
Living/Kitchen (Max)	27' 3" x 16' 0"
Bathroom	9' 0" x 7' 6"
Bedroom 1	12' 5" x 11' 11"



APARTMENT SIXTEEN

DIMENSIONS

GROUND FLOOR	MEASUREMENTS
Living/Kitchen (Max)	39' 8" x 13' 1"
Bathroom	9' 3" x 7' 10"
Bedroom 1	13' 0" x 10' 5"
Bedroom 2	7' 7" x 11' 4"



1 BEDROOM

SECOND FLOOR

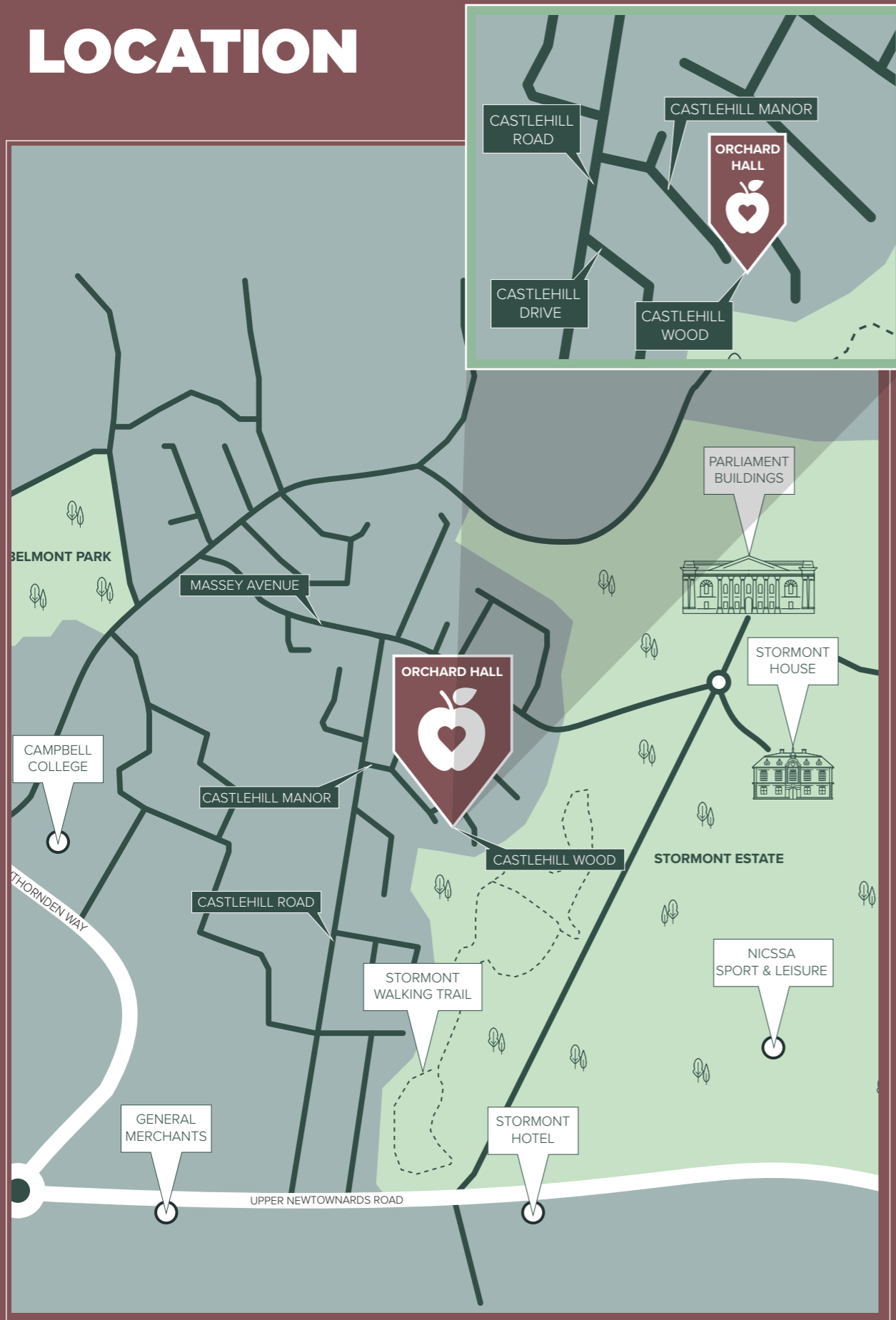
690 SQ FT

2 BEDROOMS

SECOND FLOOR

816 SQ FT

LOCATION





LANYON HOMES



East Belfast Office
237 Upper Newtownards Road
Belfast, BT4 3JF

028 9059 5555 | simonbrien.com

Disclaimer: These particulars do not constitute any part of an offer or contract. None of the statements contained in these particulars are to be relied on as statements or representations of fact and intending purchasers must satisfy themselves by inspection or otherwise correctness of each of the statements contained in these particulars. Configurations of kitchens, bathrooms and wardrobes etc. may be subject to alteration from those illustrated without prior notification. Internal walls within each apartment are also subject to change at the discretion of the developer. Purchasers must satisfy themselves as to the current specification at the time of signing legally binding contracts. The Vendor does not make or give, and neither the Selling Agent, nor any person in their employment, has the authority to make or give any representation or warranty whatever in relation to any property. Artist's impressions, computer generated images and photographs are for illustration only. Plans are not to scale and all the dimensions shown are approximate. The development name is purely for marketing purposes and is not a guarantee that the local council will adopt it in the street naming.