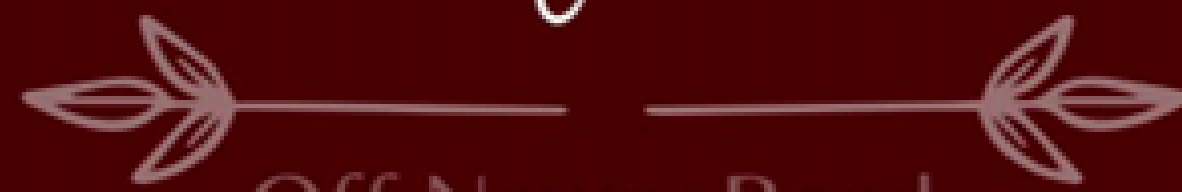


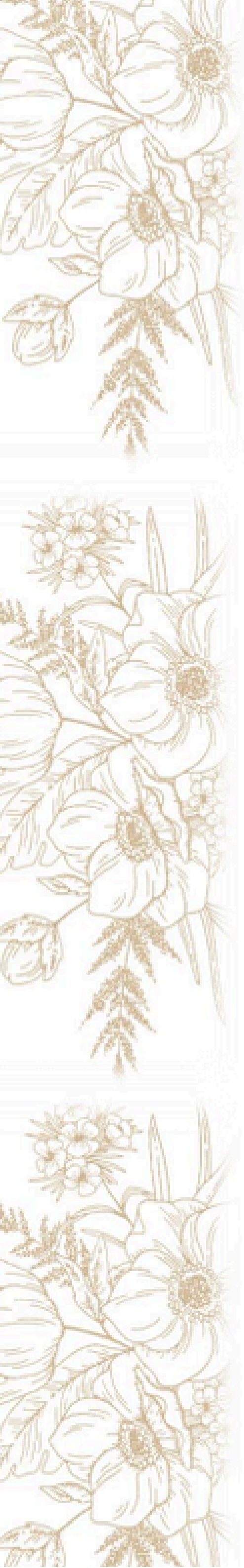
# Ashley Hill



Off Newry Road

Armagh

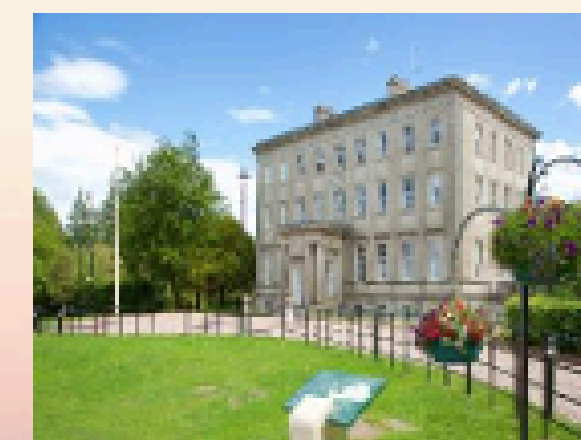
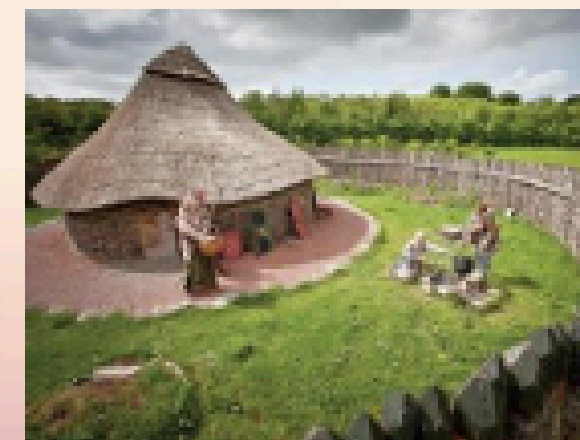


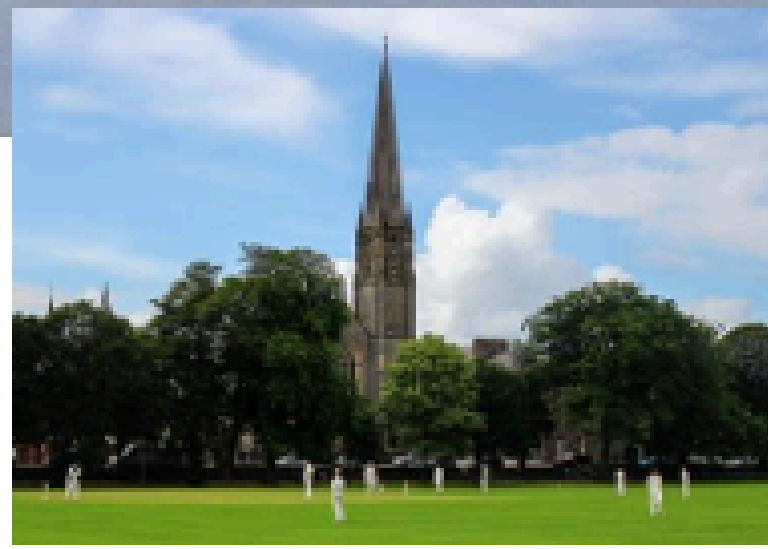
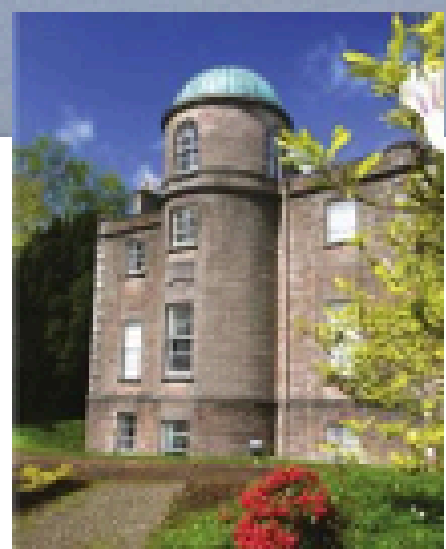


## Convenient, Comfortable Living on the edge of the City

Situated just off the Newry Road, in the Cathedral City of Armagh, bespoke new homes at Ashley Hill showcasing the definition of convenient family living.

Armagh is the home of countless facilities and beautiful outdoor spaces.





Ashley Hill offers a choice of uniquely designed three bedroom detached and semi-detached homes, situated just off the Newry Road, Armagh. The layout of these homes is perfect for modern day living. Each of these homes will be bespoke turnkey complete with landscaped gardens. There has been great thought and attention gone into the planning of these homes, the use of stone and render detail will ensure they will provide a timeless look that will maintain its appeal for decades. These impressive and unique house types, providing great layout and quality finish presents Ashley Hill as something truly special.





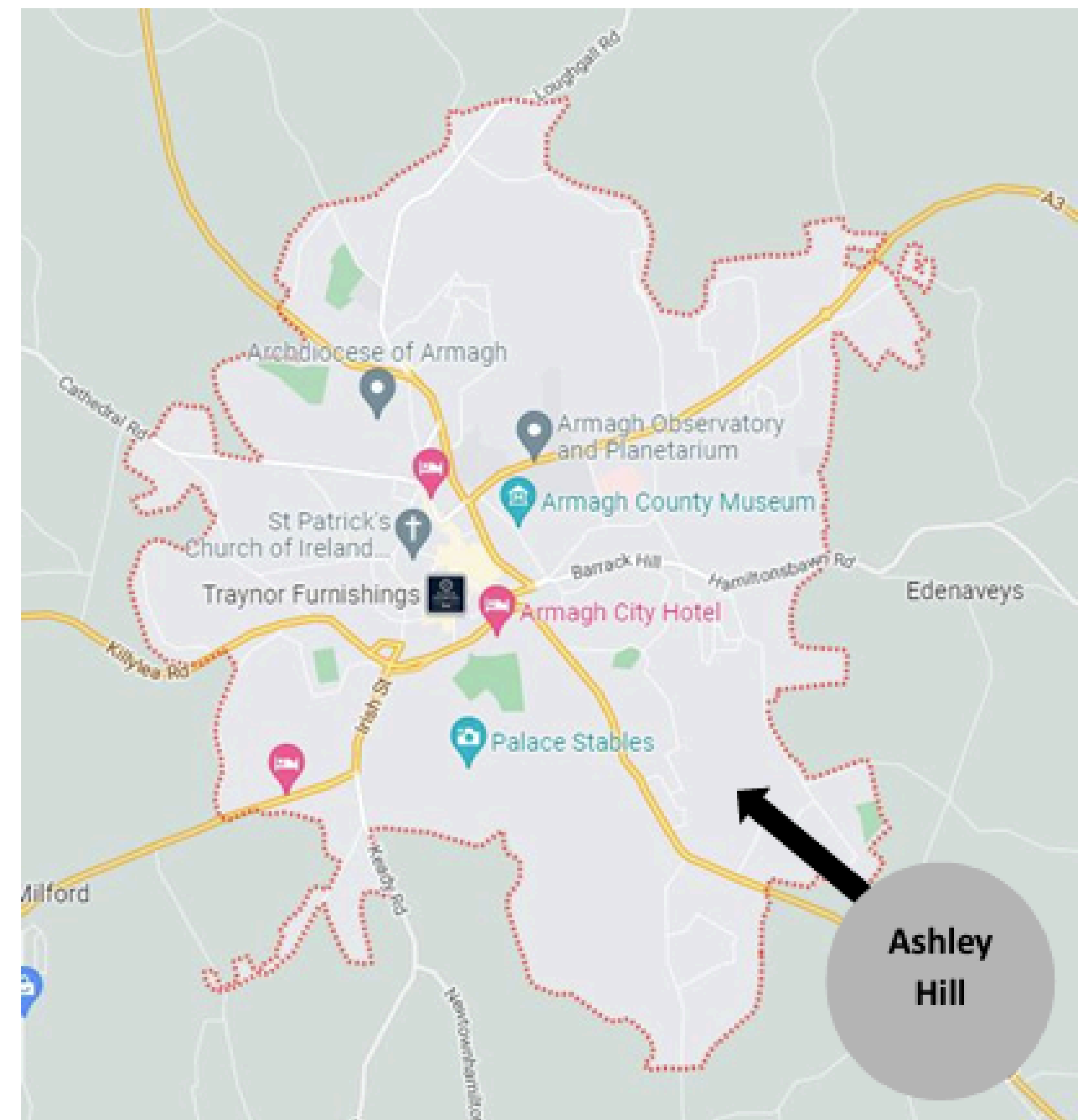
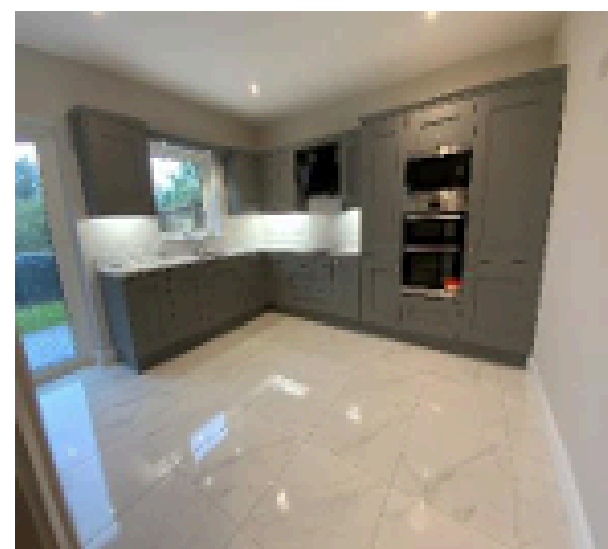
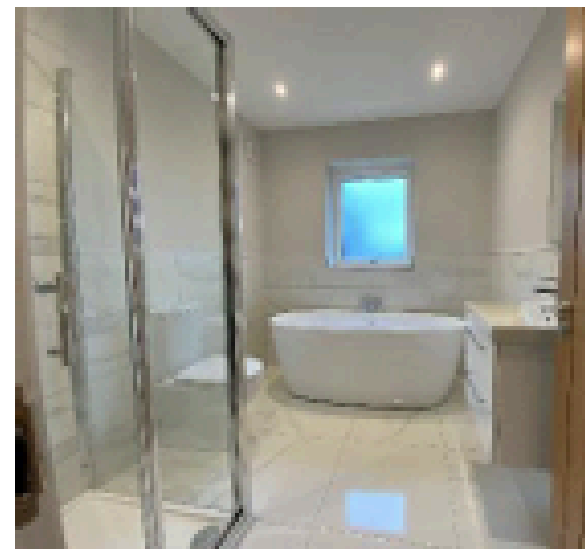
# Building

## houses for over 20 years

With over 20 years' experience in the building trade Orchard County Contracts Ltd, have been building tailor made homes in the County Armagh Area, catering to all needs, from first time buyers to large families.

All customers can enjoy the stress-free process from start to finish when buying their new property. The commitment and dedication of working to high standards and excellent customer care has been recognised.

With the turnkey options and outstanding service, it is not difficult to see why customers have chosen to buy a home from Orchard County Contracts Ltd.



### Travelling Distances

**Armagh – 1.3 Miles**

**Markethill – 6.6 Miles**

**Moy – 8.7 Miles**

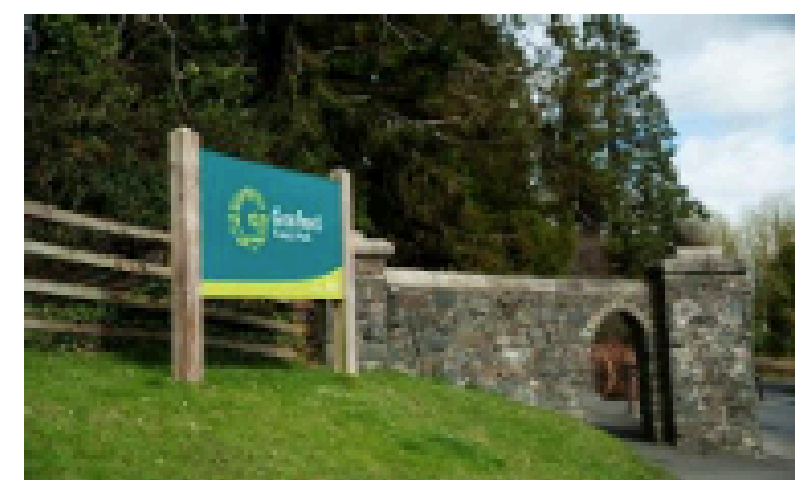
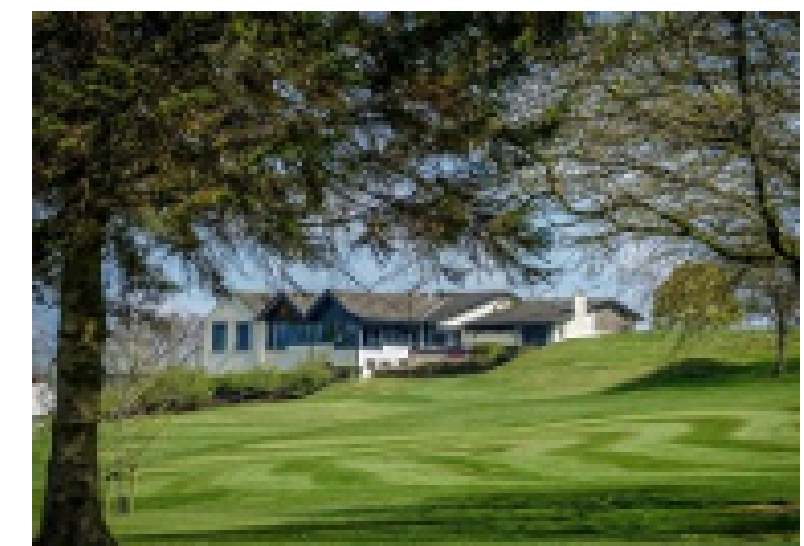
**Portadown – 10.7 Miles**

**Newry – 18.0 Miles**

**Monaghan – 17.6 Miles**

**Lisburn – 13.0 Miles**

**Belfast – 40.4 Miles**



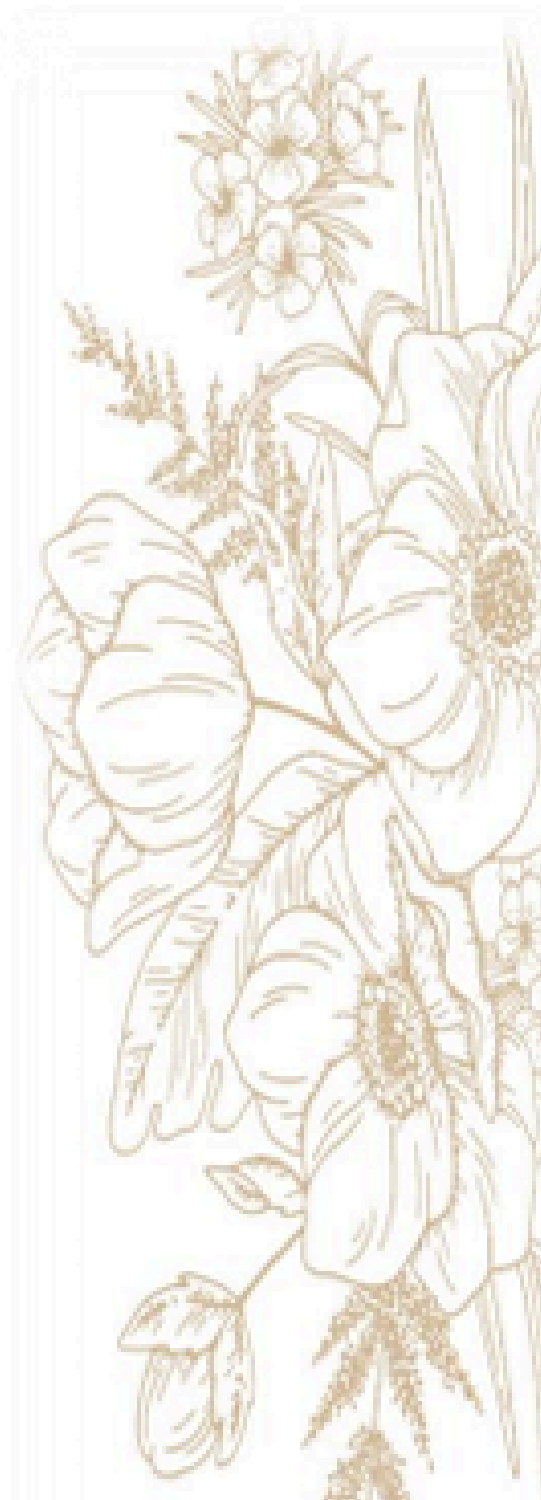




Ashley Hill  
Off Newry Road  
Armagh

**House Type A & B**

**Total Floor Area: 1288 sq ft approx.**

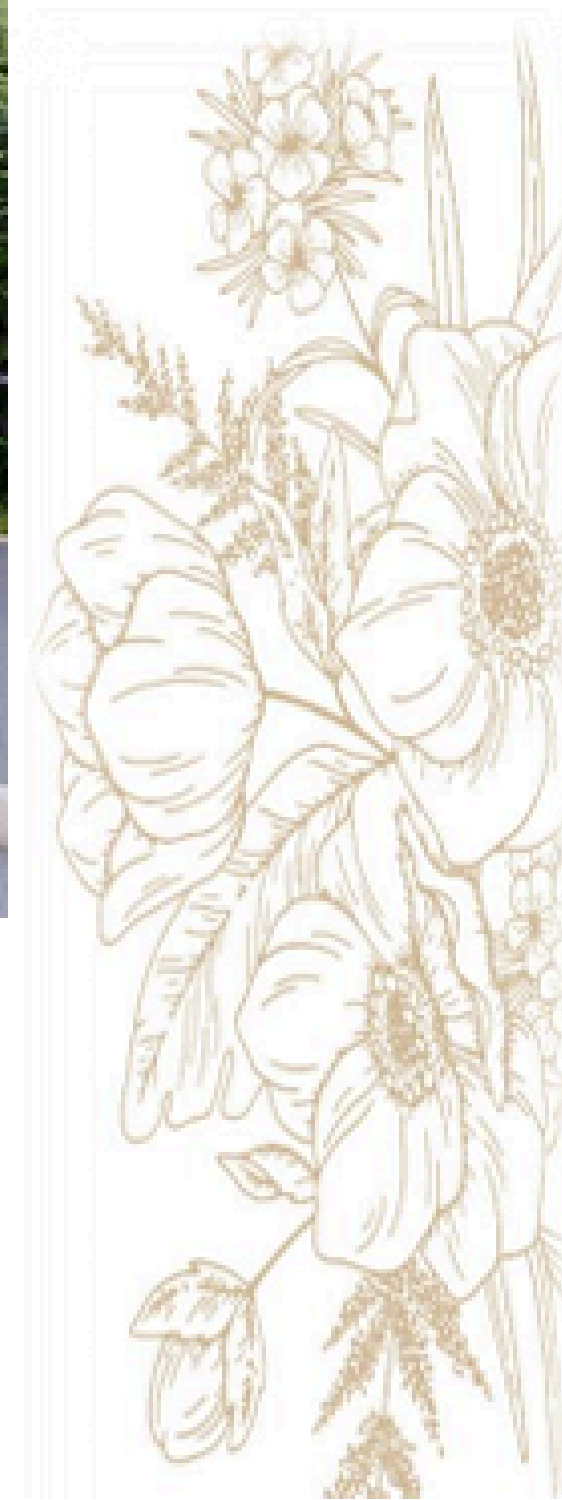




Ashley Hill  
Off Newry Road  
Armagh

**House Type C**

**Total Floor Area:** 1274 sq ft approx.





Ashley Hill  
Off Newry Road  
Armagh

**House Type D & D1**

**Total Floor Area:** 1149 sq ft approx.



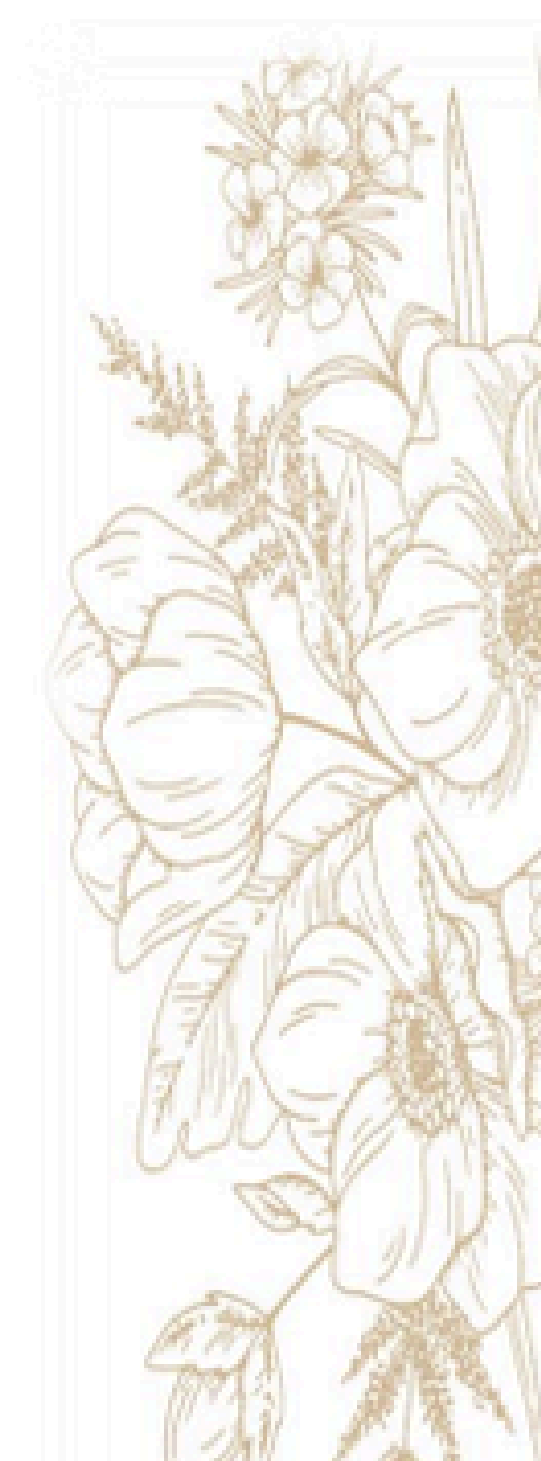




Ashley Hill  
Off Newry Road  
Armagh

**House Type E**

**Total Floor Area:** 980 sq ft approx.





Ashley Hill  
Off Newry Road  
Armagh

**House Type F & G**

**Total Floor Area:** 980 sq ft approx.

