



SHIMNA MILE

Bryansford Road
Newcastle
BT33 0TQ

HAGAN 

HAGAN  [®]
CREATING
HOMES
SINCE 1988

www.haganhomes.co.uk

*At Hagan Homes
we are not developers;
We are home builders.*



With over 35 years experience Hagan Homes prides itself on offering affordable, quality, stylish homes, so go ahead and make your new home a Hagan Home.

Step by Step Guide

Download our **Step by Step** guide to buying a Hagan Home from our website.
www.haganhomes.co.uk



Convenient living with everything on your doorstep

Shimna Mile is positioned at the gateway to some of Northern Ireland's most spectacular landscapes, including coastal views and an array of beautiful, green spaces, including the world-renowned Royal County Down Golf Club in which homeowners can spend the afternoon on the lush fairways of this exceptional course.

Shimna Mile is located just a few minutes' walk from the picturesque Newcastle Beach, providing a great opportunity to experience a fun-filled family day out.

Easily accessible and located in the quaint seaside town of Newcastle, Shimna Mile is situated within reach of a selection of eateries and shops, alongside nearby entertainment and leisure facilities.

Supermarkets including Tesco and Newcastle EuroSpar are situated within a short distance of Shimna Mile, each offering residents an excellent selection of everyday necessities. Local boutiques can also be found along Newcastle's Main Street.

For those undertaking the daily commute, excellent road links to Belfast City Centre and beyond guarantee hassle-free travel for homeowners. For those planning on travelling further afield, George Best City Airport can be reached in just over an hour by car.

Both Tollymore Forest Park and Murlough National Nature Reserve can be found less than five miles away. The nearby Newcastle Tennis Club offers endless possibilities for a range of ages to experience coaching and membership benefits on outstanding all-weather courts.



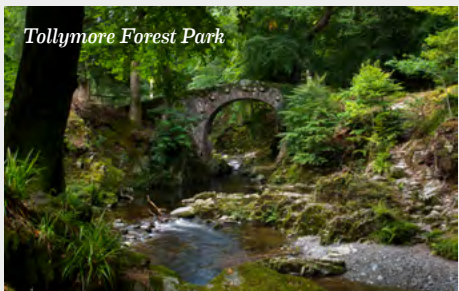


Dog Walking along Murlough Beach



Tesco Superstore

An Ultra Connected Location



Tollymore Forest Park

On foot...

Newcastle Tennis Club	<i>6 minutes</i>
Mauds Café	<i>12 minutes</i>
Lidl	<i>14 minutes</i>
Percy French Inn (Slieve Donard Hotel)	<i>15 minutes</i>
Bryansford GAC	<i>16 minutes</i>
Newcastle Beach	<i>16 minutes</i>
EUROSPAR Newcastle	<i>18 minutes</i>

By Car...

Slieve Donard Hotel	<i>1 mile</i>
Tesco Superstore	<i>1.1 miles</i>
Royal County Down Golf Club	<i>1.2 miles</i>
Tollymore Forest Park	<i>2.7 miles</i>
Murlough National Nature Reserve	<i>4.3 miles</i>
Silent Valley Reservoir	<i>13 miles</i>
Downpatrick	<i>13 miles</i>
Newry	<i>21 miles</i>
Belfast City Centre	<i>33.5 miles</i>
George Best Belfast City Airport	<i>32 miles</i>
Belfast International Airport	<i>42 miles</i>



Slieve Donard Hotel

Royal County Down Golf Club looking towards Newcastle and Slieve Donard



Cycling, Mourne Mountains



Tollymore Forest Park



Entrance to Tollymore Forest Park



Newcastle Town Centre

Homes designed and built with you in mind

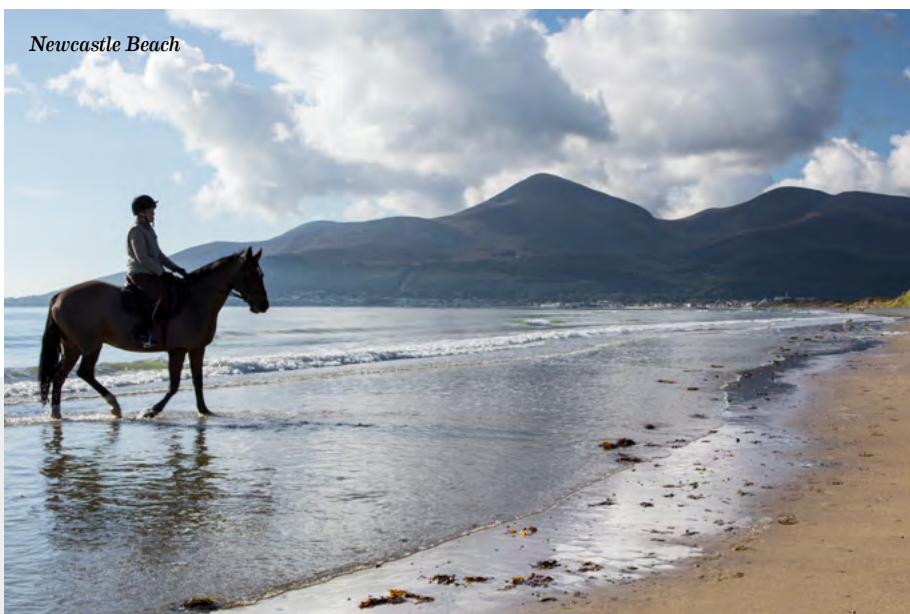
Ideally located at the foot of the breath-taking Mourne Mountains, Shimna Mile is the perfect home for those wishing to live in both a comfortable and modern sanctuary, surrounded by beautiful landscapes, coastal views and picturesque scenery. Boasting convenience and accessibility, the outstanding collection of detached, semi-detached, townhouses and apartments at Shimna Mile are sure to appeal to a wide variety of buyers, from couples to downsizers and everyone in between.

For those who love spending time in nature, look no further than the multitude of stunning outdoor spaces that encompass the homes at Shimna Mile. With Tollymore Forest Park providing a wealth of opportunity to admire local wildlife while strolling through treelined paths, and the sandy shores of both Newcastle Beach and Murlough Beach situated just a short distance away, residents of Shimna Mile are spoilt for choice when it comes to exploring nearby areas of natural beauty. What's more, homeowners can surely appreciate Shimna Mile's close proximity to the impressive Mourne Mountains, which provide an abundance of possibilities to experience adventure and discovery.

Newcastle Town Centre is positioned right on the doorstep, with homeowners having the ability to reap the rewards from the numerous cafés and restaurants that can be reached in just a short walk. The renowned Slieve Donard Hotel offers a luxurious

getaway for those hoping to kick back and relax at the end of a long week with fine dining and rejuvenating spa experiences. Residents of Shimna Mile can also visit the neighbouring town of Downpatrick which includes a multitude of historic landmarks and tourist attractions for all of the family to enjoy.

Impeccably designed, the homes at Shimna Mile benefit from carefully considered internal features throughout each property, alongside attractive exteriors which exude elegance and style. Modern fittings and fixtures within the homes at Shimna Mile ensure minimal upkeep, all the while providing a chic and contemporary haven for residents to relax and unwind. With every property utilising highly efficient energy systems, homeowners can rest assured that their home will not only maintain low energy costs, but also contribute to an environmentally friendly way of life.



*Architecturally designed homes
with a truly unbeatable location*

The Carmeen
Site 62b

The Carmeen
Site 62a





The Binnian
Site 61

The Corragh,
The Finlieve & The Pierce
Sites 58-60

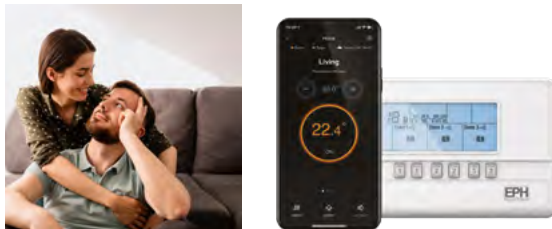
The Corragh,
The Finlieve & The Pierce
Sites 55-57



Making your new house or apartment a home

Careful attention to detail has been given in every element of design and construction at Shimna Mile giving these homes a distinct charm.

Internal



- New Ember PS Smart Heating Control System - Control your heating system anywhere, anytime from the palm of your hand
- x1 USB double socket in kitchen and all bedrooms
- Extensive electrical specification to include prewire for BT and Sky
- Woodburning Stove fitted (houses only)



Kitchen

- A choice of quality kitchen doors, worktop colours & handles
- Contemporary underlighting to kitchen units
- Floor level mood lighting
- Appliances to include electric oven, hob and stainless steel & glass extractor hood



Bathroom / Ensuite / Shower Room



- Contemporary white sanitary ware
- Thermostatically controlled showers
- Ceramic floor and partial wall tiling fitted from a superior range
- Chrome heated towel rail



External

- External lighting to front and rear doors (houses only)
- Extensive trees and landscaping across entire development
- All communal areas and amenity areas are to be maintained by management company



The finer details

Hagan Homes is renowned for its heritage of craftsmanship and reputation for carefully applying the best of modern building technology to every development. The result is a place that is rich in detail, with homes that are stylish, efficient and comfortable.

GENERAL FEATURES

- Gas high efficiency boiler with thermostatically controlled radiators
- Internal doors: White four panel doors with chrome handles
- Extensive electrical specification to include pre-wire for BT & Sky Q
- Ultrafast Full Fibre Broadband available through BT Openreach with up to 1000Mbps download & up to 220Mbps upload speeds available
- Internal walls, ceilings and woodwork painted in neutral colours
- Kitchen / Dining area to have tiled floor (houses only)
- Apartment halls and living areas to have tiled floor
- Carpets to lounge and bedrooms
- Woodburning stoves fitted (houses only)
- New Ember PS Smart Heating Control System - Control your heating system anywhere, anytime from the palm of your hand, with this wifi ready RF thermostat (electronic sensors that communicate by radio signals to the boiler to provide the ideal room temperature) and it's free app, making it possible to add multiple users, boost, change schedules activate holiday mode and more
- x1 USB double socket in kitchen and all bedrooms
- Ethernet port in smaller bedroom

- Mains supply smoke, heat and carbon monoxide detectors
- uPVC double glazed windows
- 2 year defects liability period by Hagan Homes
- 10 year NHBC structural warranty

KITCHEN

- A choice of quality kitchen doors, worktop colours and handles
- Contemporary underlighting to kitchen units
- Floor level mood lighting
- Ceramic floor and partial wall tiling from superior range
- Appliances to include electric oven, hob and stainless steel & glass extractor hood
- Integrated fridge freezer
- Integrated dishwasher
- Integrated washing machine (houses only) except The Corragh which will have a freestanding washing machine and tumble dryer in utility
- Integrated washer / dryer machine (apts only)

BATHROOM / ENSUITE / SHOWER ROOM

- Contemporary white sanitary ware
- Thermostatically controlled bath / shower mixer and screen
- Ensuite / shower room (where applicable) with thermostatically controlled shower mixer and screen

- Soft close toilet seat and cover
- Clicker waste system in wash hand basin
- Chrome heated towel rail
- Ceramic floor and partial wall tiling fitted from a superior range

EXTERNAL FEATURES

- External lighting to front and rear doors (houses only)
- All front and back gardens to be grassed
- Outside water tap
- Bitmac parking areas
- Extensive landscaping across entire development
- All communal areas and amenity areas are to be maintained by a management company, management fee to be confirmed

APARTMENT FEATURES

- Sites 45-50 will have communal entrance hallway with audio intercom communication via keypad at the main communal door
- All other apartments will have individual entrances
- External lighting to entrance doors



Images used are taken from previous Hagan show homes.



Dog Walking along Murlough Beach



Slieve Donard Hotel



Royal County Down Golf Club



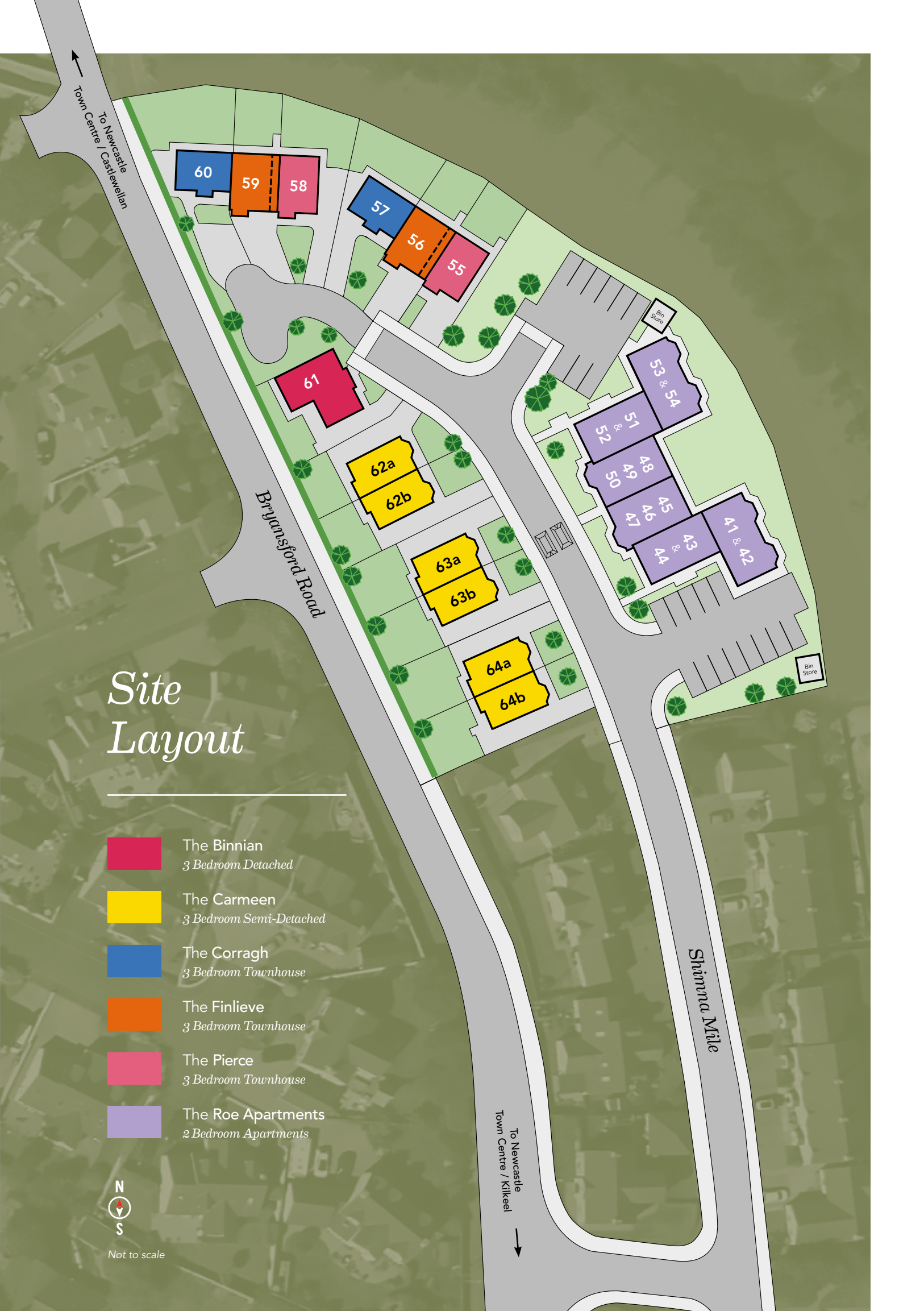
Tollymore Forest Park

Site Layout

- The Binnian
3 Bedroom Detached
- The Carmeen
3 Bedroom Semi-Detached
- The Corragh
3 Bedroom Townhouse
- The Finlieve
3 Bedroom Townhouse
- The Pierce
3 Bedroom Townhouse
- The Roe Apartments
2 Bedroom Apartments



Not to scale





The Binnian

3 Bedroom Detached

Total Floor Area - 1231 sq ft approx.

Ground Floor

ENTRANCE HALL

LOUNGE
17'11" x 10'9"

KITCHEN / DINING
16'1" x 11'10"

MASTER BEDROOM
12'0" x 10'9"

ENSUITE
6'10" x 5'7"

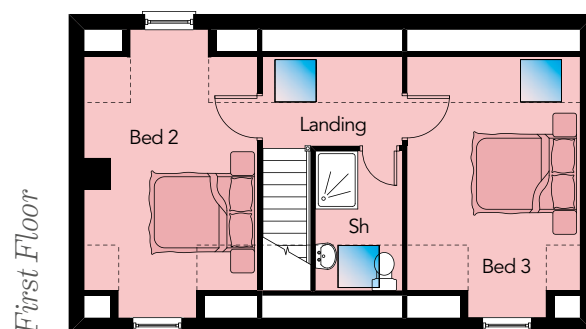
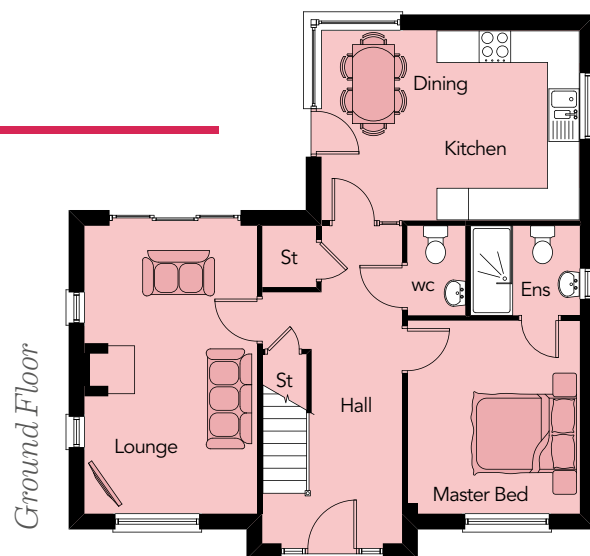
WC
5'7" x 3'7"

First Floor

BEDROOM 2
17'11" x 10'9" max

BEDROOM 3
17'11" x 10'9" max

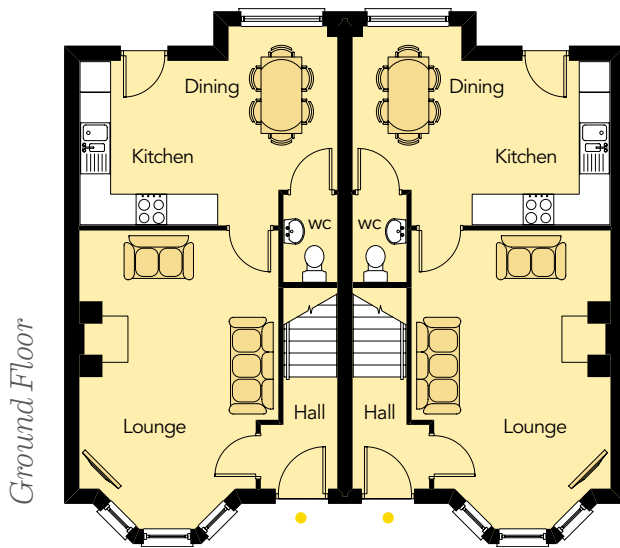
SHOWER ROOM
8'8" x 5'5"



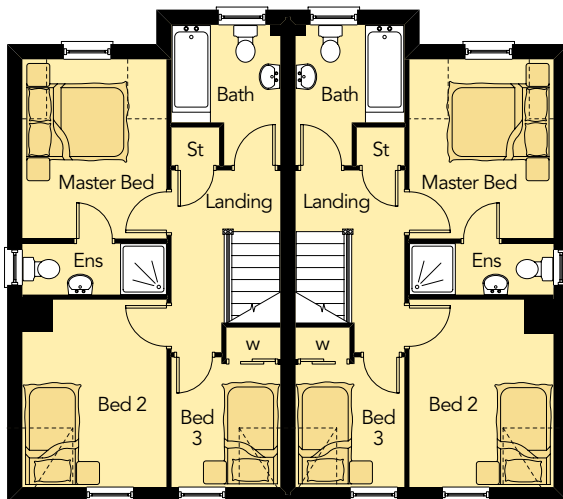


The Carmeen

3 Bedroom Semi-Detached
Total Floor Area - 952 sq.ft approx.



Ground Floor



First Floor

Ground Floor

ENTRANCE HALL

LOUNGE
19'2" x 12'10" max

KITCHEN / DINING
16'7" x 12'10" max

WC
5'8" x 3'6"

First Floor

MASTER BEDROOM
11'6" x 9'3"

ENSUITE
9'3" x 3'3"

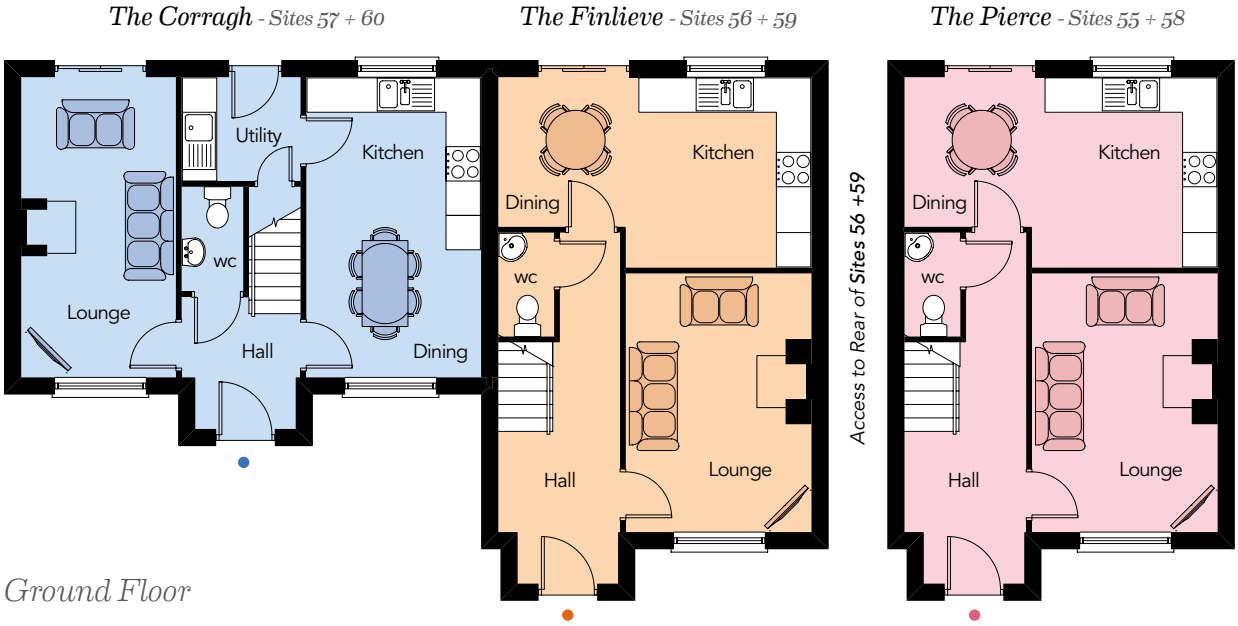
BEDROOM 2
12'1" x 9'3" max

BEDROOM 3
8'4" x 7'0" max

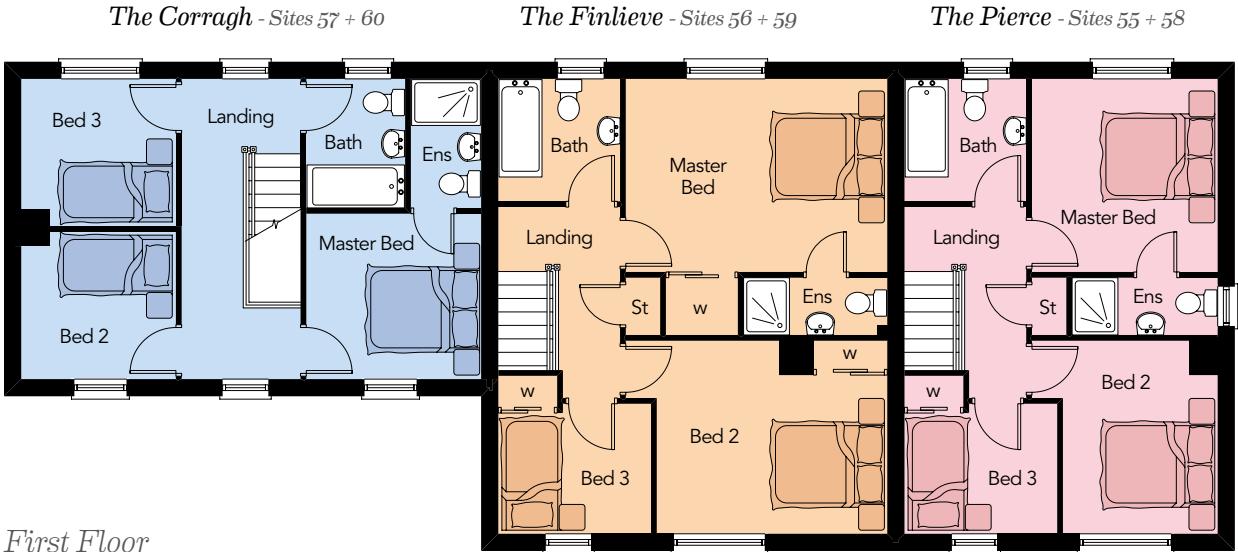
SHOWER ROOM
9'0" x 7'0"

The Corragh, The Finlieve & The Pierce

3 Bedroom Townhouses



Ground Floor



First Floor



The Corragh
Sites 57 + 60

The Finlieve
Sites 56 + 59

The Pierce
Sites 55 + 58

Computer Visual

The Corragh - Sites 57 + 60

Ground Floor

LOUNGE	17'2" x 8'10"
KITCHEN / DINING	17'2" x 10'0"
UTILITY	6'10" x 5'11"
WC	6'0" x 3'6"

First Floor

MASTER BED	10'0" x 9'6"
ENSUITE	7'5" x 4'0"
BEDROOM 2 max	8'10" x 8'5"
BEDROOM 3 max	8'10" x 8'5"
BATHROOM	7'5" x 5'8"

Total Floor Area: 914 sq ft approx.

The Finlieve - Sites 56 + 59

Ground Floor

LOUNGE	14'10" x 10'8"
KITCHEN / DINING max	17'11" x 10'11"
WC	5'11" x 3'2"

First Floor

MASTER BED	15'0" x 11'1"
ENSUITE	8'3" x 3'3"
BEDROOM 2 max	15'0" x 11'1"
BEDROOM 3 max	8'9" x 7'5"
BATHROOM	7'0" x 7'0"

Total Floor Area: 1056 sq ft approx.

The Pierce - Sites 55 + 58

Ground Floor

LOUNGE	14'10" x 10'8"
KITCHEN / DINING max	17'11" x 10'11"
WC	5'11" x 3'2"

First Floor

MASTER BED	11'1" x 10'8"
ENSUITE	8'4" x 3'3"
BEDROOM 2 max	11'1" x 10'8"
BEDROOM 3 max	8'9" x 7'5"
BATHROOM	7'0" x 7'0"

Total Floor Area: 943 sq ft approx.

The Roe

2 Bedroom Apartments

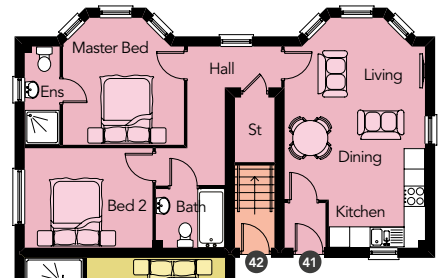
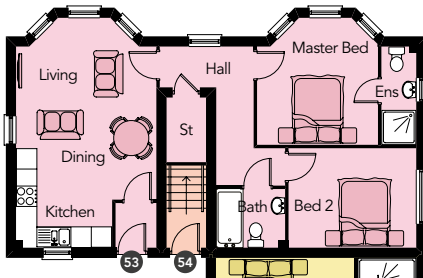




Computer Visual

Apartment 53

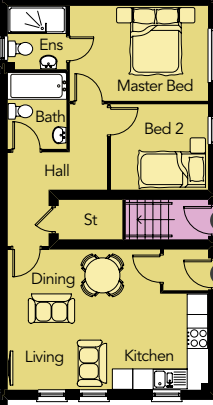
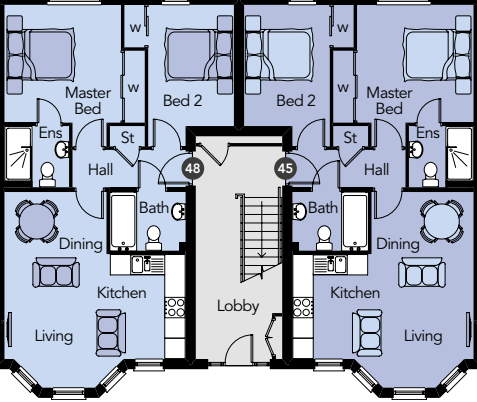
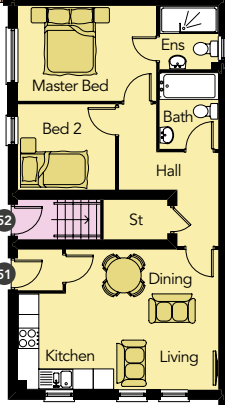
Apartment 41



Ground Floor

Apartment 48

Apartment 45

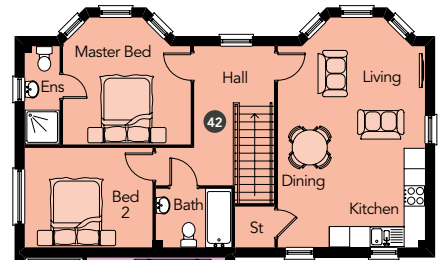
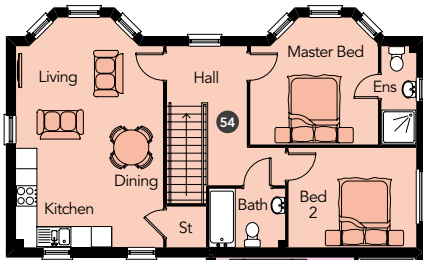


Apartment 51

Apartment 43

Apartment 54

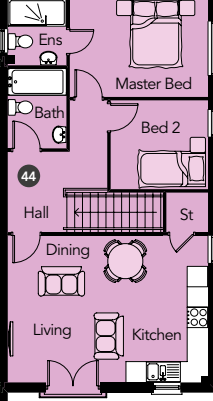
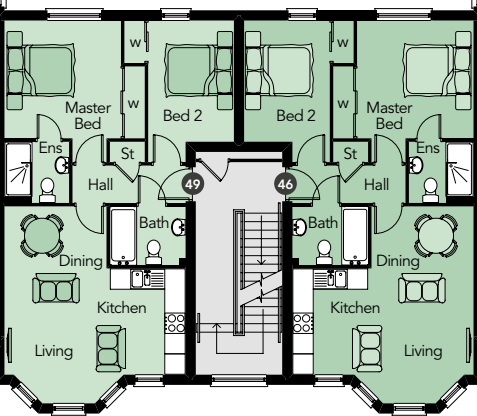
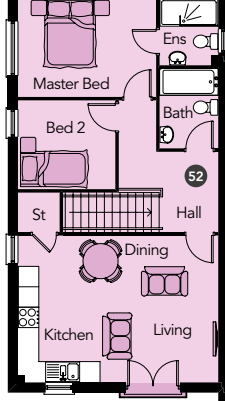
Apartment 42



First Floor

Apartment 49

Apartment 46

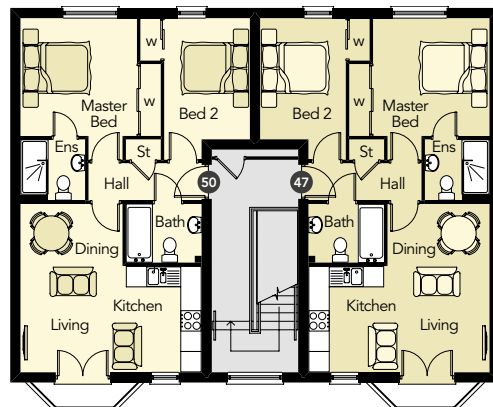


Apartment 52

Apartment 44

Apartment 50

Second Floor



Apartment 50

Apartment 47

The Roe

2 Bedroom Apartments



Computer Visual

Ground Floor

Apartments 41 + 53

LIVING / KITCHEN / DINING max	22'2" x 13'6"
MASTER BED max	12'3" x 11'8"
ENSUITE	9'6" x 3'4"
BEDROOM 2	12'4" x 9'7"
BATHROOM	6'8" x 5'8"

Total Floor Area: 739 sq ft approx.

Apartments 43 + 51

LIVING / KITCHEN / DINING max	19'4" x 13'6"
MASTER BED	13'4" x 9'6"
ENSUITE	6'1" x 5'8"
BEDROOM 2	9'5" x 8'3"
BATHROOM	7'4" x 5'8"

Total Floor Area: 662 sq ft approx.

Apartments 45 + 48

LIVING / KITCHEN / DINING max	18'11" x 17'6"
MASTER BED max	13'8" x 11'3"
ENSUITE	6'3" x 5'11"
BEDROOM 2 max	13'8" x 8'3"
BATHROOM	7'4" x 5'8"

Total Floor Area: 668 sq ft approx.

First Floor

Apartments 42 + 54

LIVING / KITCHEN / DINING max	22'2" x 14'2"
MASTER BED max	12'4" x 12'3"
ENSUITE	9'6" x 3'4"
BEDROOM 2	12'4" x 9'7"
BATHROOM	7'4" x 5'8"

Total Floor Area: 801 sq ft approx.

Apartments 44 + 52

LIVING / KITCHEN / DINING	19'4" x 14'2"
MASTER BED	13'4" x 9'2"
ENSUITE	6'5" x 5'8"
BEDROOM 2	9'5" x 8'7"
BATHROOM	7'8" x 5'8"

Total Floor Area: 724 sq ft approx.

Apartments 46 + 49

LIVING / KITCHEN / DINING max	18'11" x 17'6"
MASTER BED max	13'8" x 11'3"
ENSUITE	6'3" x 5'11"
BEDROOM 2 max	13'8" x 8'3"
BATHROOM	7'4" x 5'8"

Total Floor Area: 668 sq ft approx.

Second Floor

Apartments 47 + 50

LIVING / KITCHEN / DINING max	17'6" x 16'3"
MASTER BED max	13'8" x 11'3"
ENSUITE	6'3" x 5'11"
BEDROOM 2 max	13'8" x 8'3"
BATHROOM	7'4" x 5'8"

Total Floor Area: 646 sq ft approx.

Current Developments



TWO THREE SIX
Belfast BT4 3HZ



BYRON HALT
Hollywood BT18 9JQ



MULBERRY
Coleraine BT52 2QB



FOXLEIGH MEADOW
Ballymoney BT53 6FE



ENLER VILLAGE
Comber BT23 5ZP



WATER'S EDGE
Greenisland BT38 8TZ



BALLYVEIGH
Antrim BT41 2GW

HAGAN[®]
CREATING
HOMES
SINCE 1988

Multi Award Winning Home Builders

PropertyPal Awards
Community (CSR)
Award Winner 2022

Development
Company of the Year
Award Winner 2022

Best Property
Marketing Campaign
of Year
Award Winner 2022

AIB Business Eye
Community (CSR)
Award Winner
2022 & 2021

FSB Small Business
Community Award
Winner 2020

Business Eye
Business Awards 2018
Highly Commended

Belfast Telegraph
Property Marketing
Award 2022 & 2018

Residential
Development
of the Year -
Highly Commended
2022

CEF - Private Housing
Development
Award Winner 2008,
2012, 2014 & 2015

Daily Telegraph
What House?
Award Winner

Sunday Express
National House Builder
Award

Daily Express
British National House
Builder Award



Royal County Down Golf Club



Raising Standards. Protecting Homeowners



www.consumercode.co.uk



In compliance with Consumer Protection from Unfair Trading and Business Protection from Misleading Marketing Regulations, please note that any visual or pictorial representations as featured in this brochure such as 3D computer generated images are purely intended as a guide for illustrative, concept purposes only and often may be subject to change. Any floor plans and site layouts used are not to scale and all dimensions are approximate and subject to change. Also note the brochure does not feature exact location or presence of specific or detailed items such as street lighting, sub stations or full finishes etc.

All specific details to your chosen plot or immediate boundaries etc. should be checked with the agent, developer, or your legal advisor prior to purchase.

Copyright notice: All rights reserved. The contents of this brochure may not be reproduced, copied, redistributed, or otherwise made available in whole or part without the prior written consent from the developer.



**LINDSAY
GRAHAM**
CHARTERED SURVEYORS & ESTATE AGENTS

16 Main Street, Newcastle,
County Down BT33 0AD
Telephone 028 4372 3408
www.lindsaygraham.co.uk



HAGAN[®]

**CREATING
HOMES**
SINCE 1988

 @HaganHomes
www.haganhomes.co.uk