



THE APARTMENTS
— at —
KIRBY'S MEADOW
— MUCKAMORE • CO. ANTRIM —

Welcome to Life at a more leisurely pace





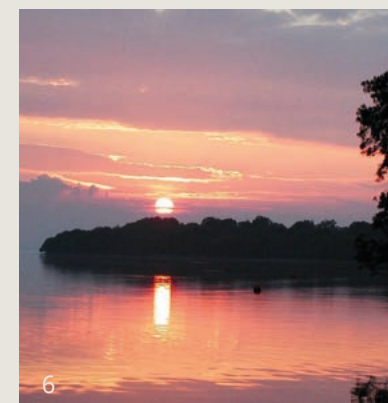
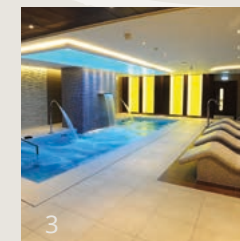
THE APARTMENTS
at
KIRBY'S MEADOW

Castle Gardens
one of
Antrim's hidden
gems



THE APARTMENTS
at
KIRBY'S MEADOW

Entertainment,
leisure and shopping.
Antrim has it all.



1. The Rabbit Hotel & Retreat
2. Muckamore Cricket Club
3. Antrim Forum Leisure Centre
4. Rea's Wood
5. The Ornamental Gardens
6. Lough Shore
7. Massereene Golf Course



THE APARTMENTS
at
KIRBY'S MEADOW



THE APARTMENTS
at
KIRBY'S MEADOW



Enjoy the peaceful
ambience of this private,
mature parkland setting

CGI shown for illustration purposes only

Muckamore Cricket and Tennis Club, Club House



THE APARTMENTS
at
KIRBY'S MEADOW

Aerial Site Layout



THE LOCAL AREA

1 Muckamore Cricket & Tennis Club.....0.1 miles	5 Antrim Forum1.4 miles	9 The Junction.....3.0 miles
2 Town Centre1.0 miles	6 Lough Shore Park2.4 miles	10 Antrim Area Hospital3.2 miles
3 Castle Gardens1.6 miles	7 Massereene Golf Club2.1 miles	
4 Clotworthy House1.6 miles	8 Antrim Omniplex.....3.0 miles	



THE APARTMENTS
at
KIRBY'S MEADOW

Location map (not to scale)



OUT OF TOWN CONNECTIONS

• Templepatrick 4.4 miles	• Glengormley 11 miles	• Ballymena..... 13 miles
• International Airport..... 4.8 miles	• Belfast City..... 18 miles	• Lisburn City 16 miles
• Ballyclare 9.8 miles		



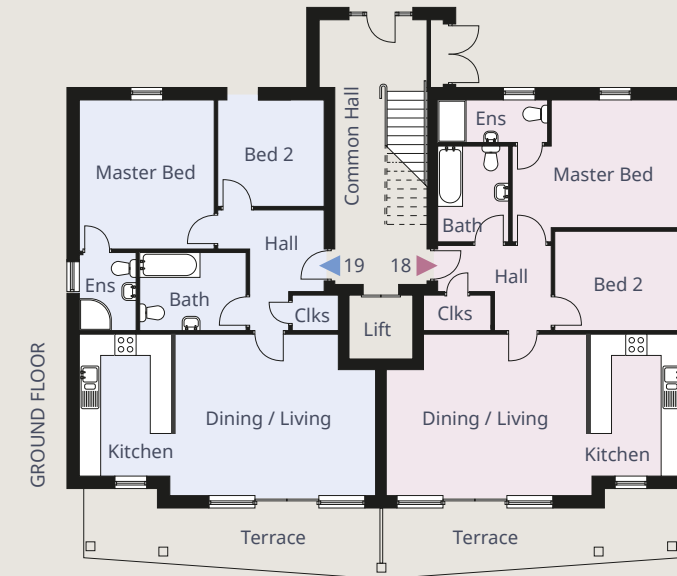
THE APARTMENTS
at
KIRBY'S MEADOW

BLOCK A: Nos. 18-23, 2 Bedroom Apartments

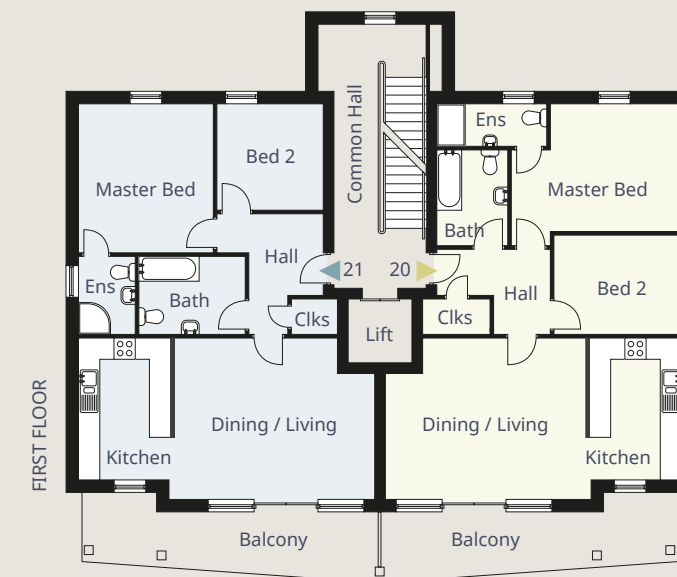
Floor area nos. 18 - 21: 871 sq ft Floor area nos. 22 & 23: 879 sq ft



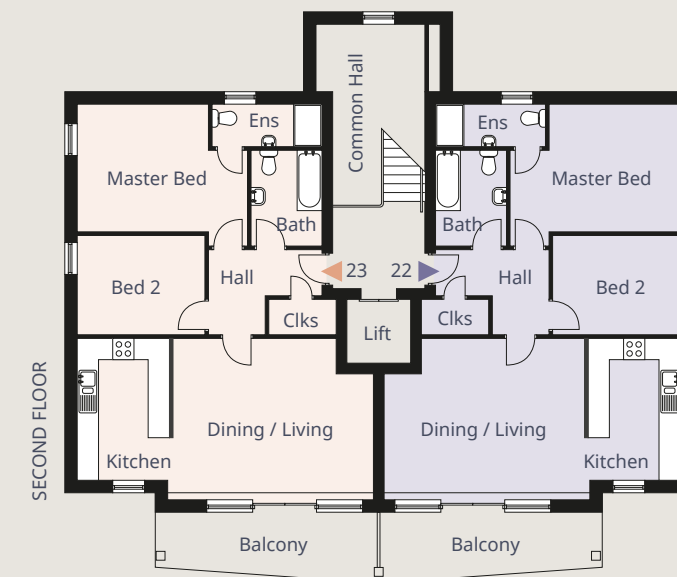
THE APARTMENTS
at
KIRBY'S MEADOW



GROUND FLOOR APT 18	ft in	metres
Entrance Hall with cloakroom		
Living Kitchen Dine max 27'4"	x 14'5"	8.35 x 4.40
Master Bedroom max 13'7"	x 11'8"	4.15 x 3.55
Ensuite 10'2"	x 3'10"	3.10 x 1.20
Bedroom 2..... 11'8"	x 9'8"	3.60 x 2.95
Bathroom 8'8"	x 6'6"	2.65 x 2.00
Terrace		



FIRST FLOOR APT 20	ft in	metres
Entrance Hall with cloakroom		
Living Kitchen Dine max 27'4"	x 14'5"	8.35 x 4.40
Master Bedroom max 15'9"	x 11'8"	4.80 x 3.55
Ensuite 10'2"	x 3'10"	3.10 x 1.20
Bedroom 2..... 11'8"	x 9'2"	3.60 x 2.80
Bathroom 8'8"	x 6'6"	2.65 x 2.00
Balcony		



SECOND FLOOR APT 22	ft in	metres
Entrance Hall with cloakroom		
Living Kitchen Dine max 27'4"	x 14'7"	8.35 x 4.45
Master Bedroom max 15'9"	x 11'8"	4.80 x 3.60
Ensuite 10'2"	x 4'1"	3.10 x 1.25
Bedroom 2..... 11'8"	x 9'2"	3.60 x 2.80
Bathroom 8'8"	x 6'6"	2.65 x 2.00
Balcony		

SECOND FLOOR APT 23	ft in	metres
Entrance Hall with cloakroom		
Living Kitchen Dine max 27'4"	x 14'7"	8.35 x 4.45
Master Bedroom max 15'9"	x 11'8"	4.80 x 3.60
Ensuite 10'2"	x 4'1"	3.10 x 1.25
Bedroom 2..... 11'8"	x 9'2"	3.60 x 2.80
Bathroom 8'8"	x 6'6"	2.65 x 2.00
Balcony		



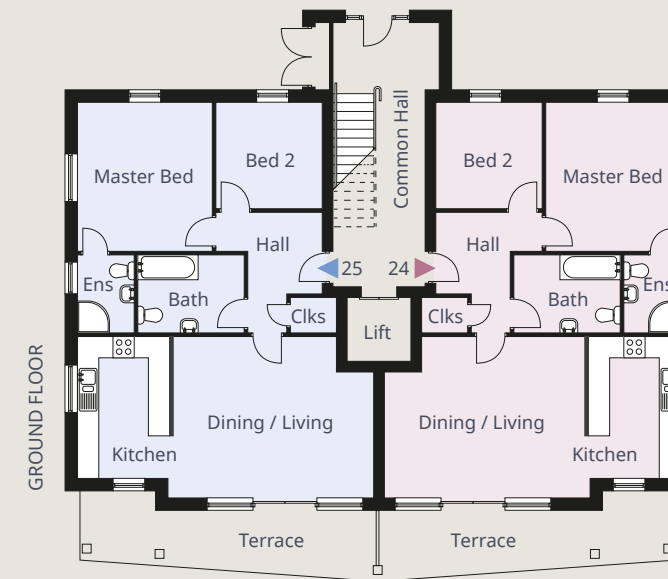
THE APARTMENTS
at
KIRBY'S MEADOW

BLOCK B: Nos. 24-29, 2 Bedroom Apartments

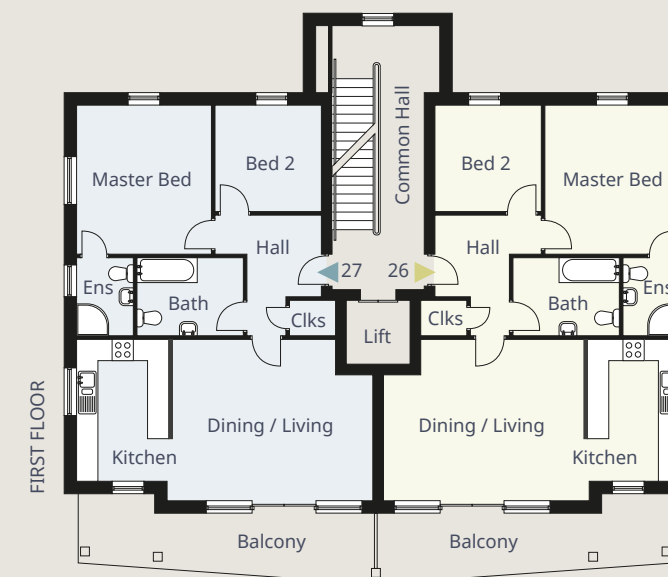
Floor area nos. 24 - 27: 871 sq ft Floor area nos. 28 & 29: 879 sq ft



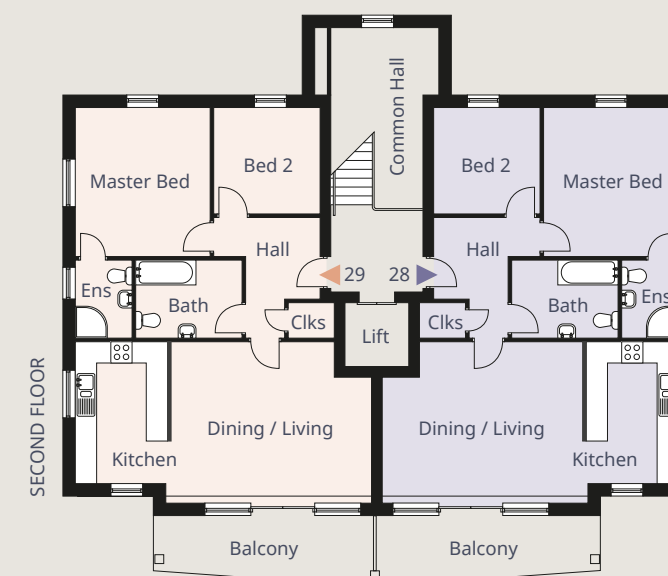
THE APARTMENTS
at
KIRBY'S MEADOW



GROUND FLOOR APT 24	ft in	metres
Entrance Hall with cloakroom		
Living Kitchen Dine max 27'4"	x 14'7"	8.35 x 4.45
Master Bedroom max 13'8"	x 12'5"	4.20 x 3.80
Ensuite 7'3"	x 5'3"	2.20 x 1.60
Bedroom 2..... 9'10"	x 9'10"	3.00 x 3.00
Bathroom 9'10"	x 7'3"	3.00 x 2.20
Terrace		



FIRST FLOOR APT 26	ft in	metres
Entrance Hall with cloakroom		
Living Kitchen Dine max 27'4"	x 14'7"	8.35 x 4.45
Master Bedroom max 13'8"	x 12'5"	4.20 x 3.80
Ensuite 7'3"	x 5'3"	2.20 x 1.60
Bedroom 2..... 9'10"	x 9'10"	3.00 x 3.00
Bathroom 9'10"	x 7'3"	3.00 x 2.20
Balcony		



SECOND FLOOR APT 28	ft in	metres
Entrance Hall with cloakroom		
Living Kitchen Dine max 27'4"	x 14'7"	8.35 x 4.45
Master Bedroom max 13'8"	x 12'5"	4.20 x 3.80
Ensuite 7'3"	x 5'3"	2.20 x 1.60
Bedroom 2..... 9'10"	x 9'10"	3.00 x 3.00
Bathroom 9'10"	x 7'3"	3.00 x 2.20
Balcony		

SECOND FLOOR APT 29	ft in	metres
Entrance Hall with cloakroom		
Living Kitchen Dine max 27'4"	x 14'7"	8.35 x 4.45
Master Bedroom max 13'8"	x 12'5"	4.20 x 3.80
Ensuite 7'3"	x 5'3"	2.20 x 1.60
Bedroom 2..... 9'10"	x 9'10"	3.00 x 3.00
Bathroom 9'10"	x 7'3"	3.00 x 2.20
Balcony		



THE APARTMENTS
at
KIRBY'S MEADOW



THE APARTMENTS
at
KIRBY'S MEADOW

Designed for living

KITCHENS

- Contemporary kitchen with choice of luxury kitchen units, door handles and worktops
- Integrated appliances in kitchen to include electric hob, electric oven, extractor hood, fridge freezer and washer / dryer
- Plumbed for dishwasher
- Recessed energy efficient LED spotlights to ceilings
- Choice of ceramic floor tiling to kitchen
- Fully tiled splashback for kitchen with choice of tiles

BATHROOMS & ENSUITES

- Contemporary white sanitary ware with chrome fittings
- Recessed energy efficient LED spotlights to ceilings in bathroom and ensuite
- Choice of ceramic floor tiling
- Multi board (choice of colours) finish around shower enclosures
- Thermostatically controlled showers
- Tiled splashback around bath and sinks with choice of tiles

INTERNAL FEATURES

- Lift to all floors
- Interior painted finish to all walls (elephants breath), ceilings (white) and woodwork
- Pre finished interior doors
- Bevelled skirting and architrave
- Choice of carpets to lounge, hall and bedrooms
- Wall mounted focal point gas fire as optional extra
- Mains supply smoke, carbon monoxide and heat detectors
- Comprehensive range of electrical sockets, switches, TV and telephone points
- One USB charging socket to kitchen and one to each bedroom
- Wired for satellite TV
- Wired for security alarm
- Gas fired central heating
- Video and audio intercom entry system
- Movement sensor lights to internal communal area

EXTERNAL FEATURES

- 10 year warranty
- Contemporary Anthracite Grey PVC windows with feature full height glazing to Living Area
- Large Terrace facing cricket green to ground floor apartments
- Large Balcony overlooking cricket green to first and second floor apartments
- PVC fascia and soffits
- Seamless aluminium guttering



SCAN OUR QR CODES BELOW WITH
YOUR CAMERA AND LOOK AROUND
OUR VIRTUAL SHOW HOMES

SCAN OR TAP



VIRTUAL TOUR

SCAN OR TAP



HOUSE TYPES

SCAN OR TAP



VIDEO





THE APARTMENTS
at
KIRBY'S MEADOW



THE APARTMENTS
at
KIRBY'S MEADOW

Time to live,
to relax, refresh & recharge



B L O C K
creative property marketing

These particulars do not constitute any part of an offer or contract. None of the statements contained in these particulars are to be relied on as statements or representations of fact and intending purchasers must satisfy themselves by inspection or otherwise as to the correctness of each of the statements contained in these particulars. All measurements of area are quoted as Net Sales Area which is calculated in accordance with the RICS Code of Measuring Practice (6th Edition) APP21. Configures of kitchens, bathrooms and wardrobes may be subject to alteration from those illustrated without prior notification. Purchasers should satisfy themselves as to the current specification at the time of booking. The Vendor does not make or give, and neither the Selling Agent, nor any person in their employment, has any authority to make or give any representation or warranty whatever in relation to any property. Artist's impressions and internal photographs are for illustration only. Plans are not to scale and all dimensions shown are approximate E. & O. E.

CGI shown for illustration purposes only

