

the Bramley

DETACHED, 1080 sq ft



BROOMHILL MANOR

Dobbin Road Portadown

the Bramley | DETACHED, 1080 sq ft

First Floor



Ground Floor



Ground Floor

Room Dimensions

Kitchen/Dining	4.7m x 3.1m	15' 4" x 10' 1"
Utility Room	2.1m x 1.6m	6' 8" x 5' 2"
Lounge	4.55m x 3.9m	14' 9" x 12' 7"
WC	2.1m x 1.1m	6' 8" x 5' 7"

First Floor

Room Dimensions

Bedroom 1	3.55m x 3.9m	11' 6" x 12' 7"
En Suite	2.6m x 0.9m	8' 5" x 2' 9"
Bedroom 2	3.66m x 3.1m	12' x 10' 1"
Bedroom 3	3.1m x 2.65m	10' 1" x 8' 6"
Bathroom	2.4m x 2.45m	7' 8" x 8'

the Phippen | SEMI-DETACHED 1080 sq ft



BROOMHILL MANOR

Dobbin Road Portadown

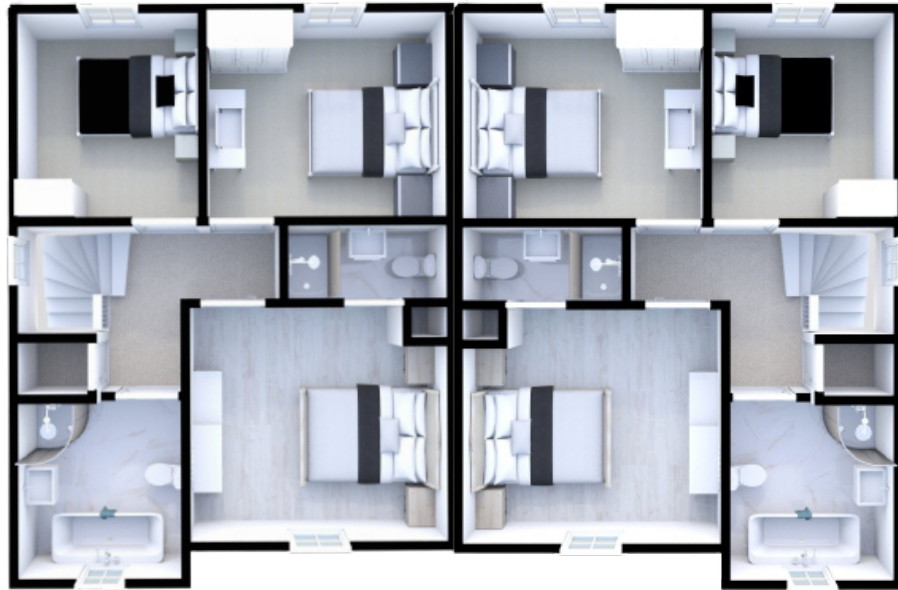
the Phippen

SEMI-DETACHED, 1080 sq ft

First Floor



Ground Floor



Ground Floor

Room Dimensions

Kitchen/Dining	4.7m x 3.1m	15' 4" x 10' 1"
Utility Room	2.1m x 1.6m	6' 8" x 5' 2"
Lounge	4.55m x 3.9m	14' 9" x 12' 7"
WC	2.1m x 1.1m	6' 8" x 5' 7"

First Floor

Room Dimensions

Bedroom 1	3.55m x 3.9m	11' 6" x 12' 7"
En Suite	2.6m x 0.9m	8' 5" x 2' 9"
Bedroom 2	3.66m x 3.1m	12' x 10' 1"
Bedroom 3	3.1m x 2.65m	10' 1" x 8' 6"
Bathroom	2.4m x 2.45m	7' 8" x 8'

The architectural perspective is for illustration purposes only, as such, the elevation shown may vary from the actual finish on site. Floor plans are not drawn to scale and dimensions are approximate. L-shaped kitchen standard. Whilst we endeavour to make our sales information accurate and reliable, they should not be relied upon as statements or representations of fact and do not constitute as part of an offer or contract.

BROOMHILL MANOR

Dobbin Road Portadown

the Site Plan

