

CRAWFORDSBURN VILLAGE BROW

Crawfordsburn



SITE 36

Computer visual.

SITE 36

GROUND FLOOR

Entrance Hall with separate WC

Living 16'5" x 13'9"

Dining 11'6" x 7'10"

Kitchen 13'5" x 11'6" min

Utility Room 6'5" x 5'11"

FIRST FLOOR

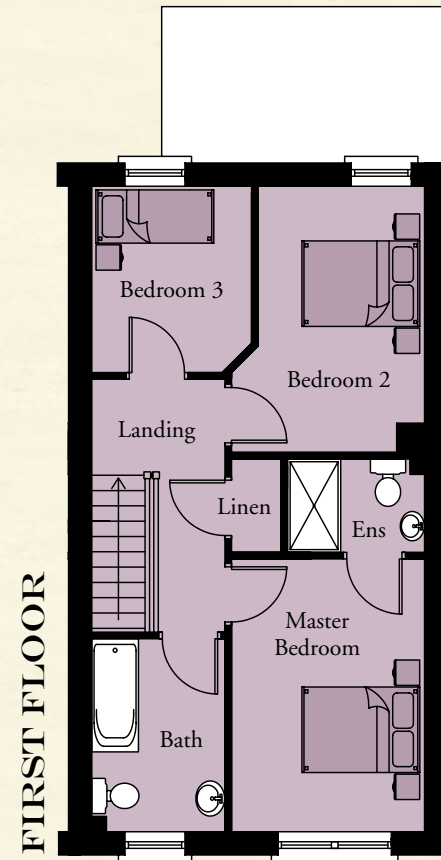
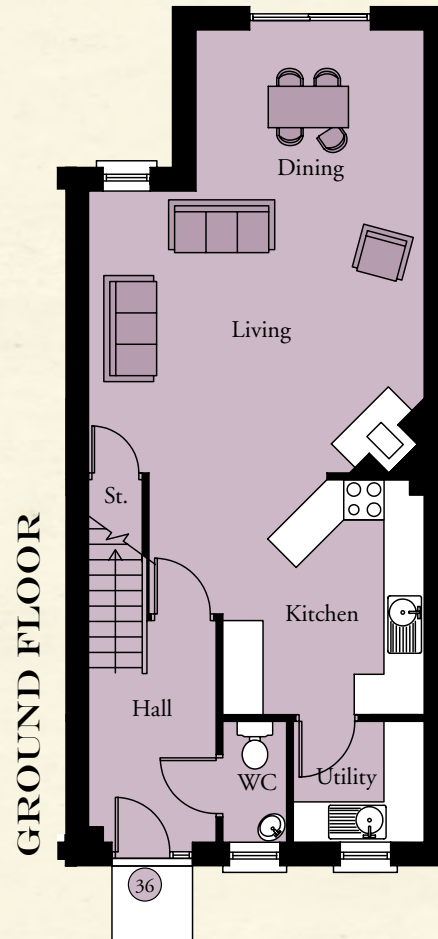
Master Bedroom 13'5" x 9'6"

Ensuite 6'9" x 4'7"

Bedroom 2 13'1" x 8'2"

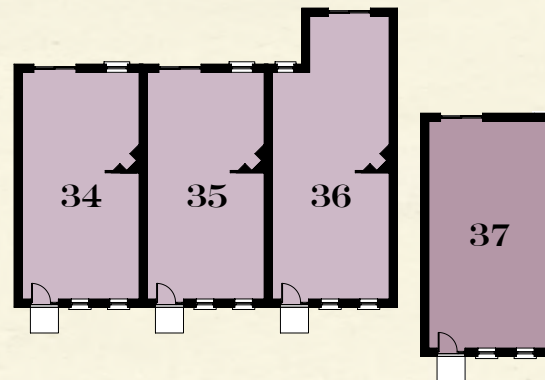
Bedroom 3 9'2" x 7'10"

Bathroom 9'6" x 6'7"



**TOTAL FLOOR AREA:
1135 SQ. FT. APPROX.**

KEY - SITES 34-37



NORTH DOWN

54 High Street
Holywood
Co Down
BT18 9AE

028 9042 4747

WWW.TEMPLETONROBINSON.COM



**CRAWFORDSBURN
VILLAGE BROW**

CGI computer visual is for illustrative purposes only. Floorplans are not to scale and all measurements are approximate.