

# CRAWFORDSBURN VILLAGE BROW

*Crawfordsburn*

34

35

36

37

SITES 34 & 35

*Computer visual.*

# SITES 34 & 35

## GROUND FLOOR

Entrance Hall with separate WC

Living / Dining 16'5" x 13'9"

Kitchen 13'5" x 11'6" min

Utility Room 6'5" x 5'11"

## FIRST FLOOR

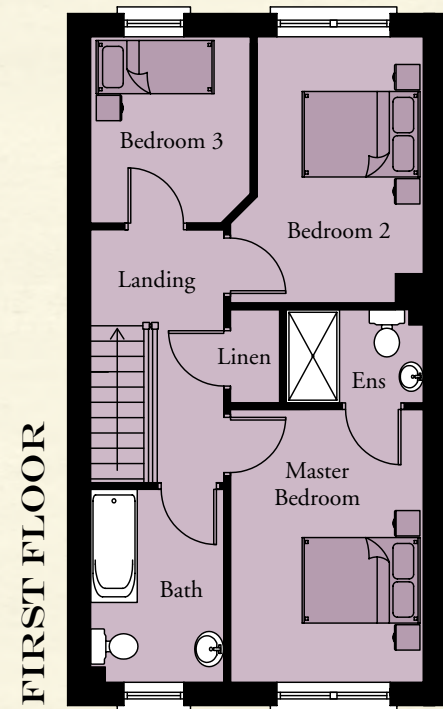
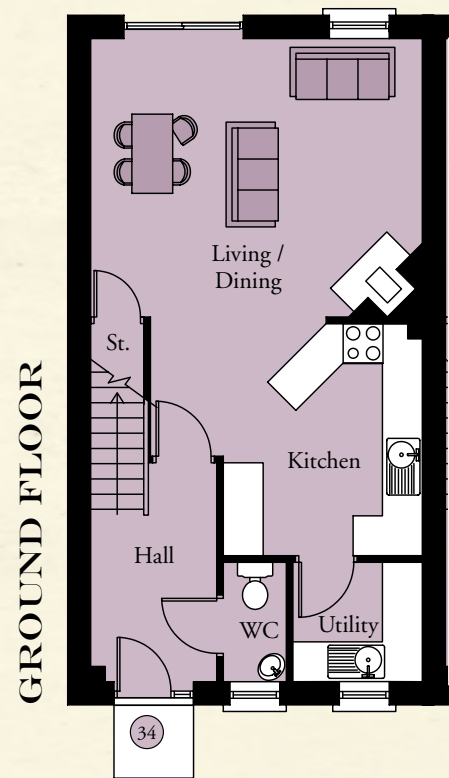
Master Bedroom 13'5" x 9'6"

Ensuite 6'9" x 4'7"

Bedroom 2 13'1" x 8'2"

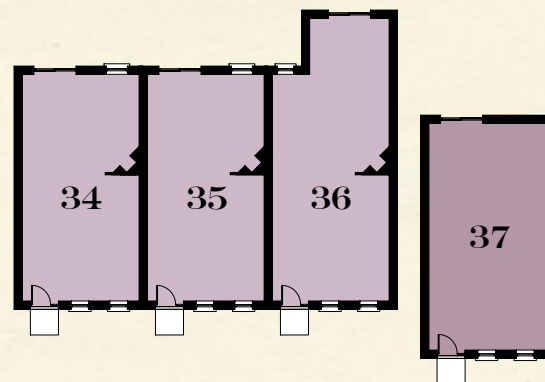
Bedroom 3 9'2" x 7'10"

Bathroom 9'6" x 6'7"



**TOTAL FLOOR AREA:  
1045 SQ. FT. APPROX.**

## KEY - SITES 34-37



**CRAWFORDSBURN  
VILLAGE BROW**

**TEMPLETON  
ROBINSON**

**NORTH DOWN**  
54 High Street  
Holywood  
Co Down  
BT18 9AE

**028 9042 4747**

WWW.TEMPLETONROBINSON.COM

*CGI computer visual is for illustrative purposes only. Floorplans are not to scale and all measurements are approximate.*