

CRAWFORDSBURN VILLAGE BROW

Crawfordsburn



SITES 28 & 29

Computer visual.

SITES 28 & 29

GROUND FLOOR

Entrance Hall with separate WC

Living / Dining 16'7" x 13'5"

Kitchen 11'6" x 10'10" min

Utility Room

FIRST FLOOR

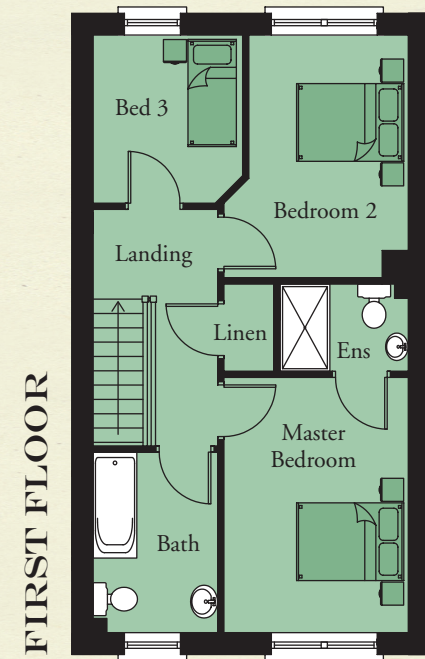
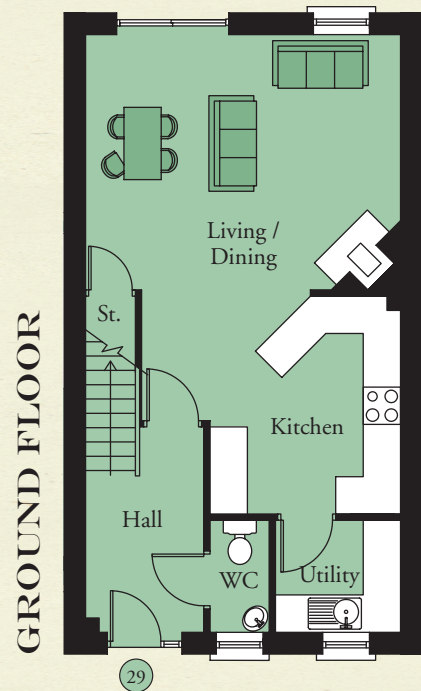
Master Bedroom 13'5" x 9'9"

Ensuite 6'9" x 4'7"

Bedroom 2 12'10" x 8'5"

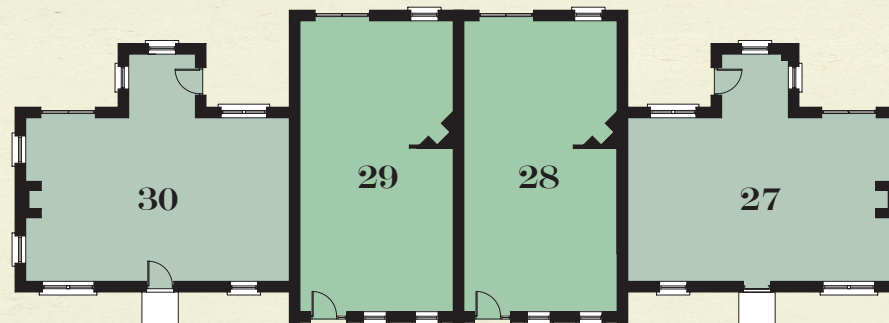
Bedroom 3 8'10" x 7'10"

Bathroom 9'6" x 6'7"



**TOTAL FLOOR AREA:
1046 SQ. FT. APPROX.**

KEY - SITES 30-27



**CRAWFORDSBURN
VILLAGE BROW**

**TEMPLETON
ROBINSON**

NORTH DOWN

54 High Street
Holywood
Co Down
BT18 9AE

028 9042 4747

WWW.TEMPLETONROBINSON.COM

CGI computer visual is for illustrative purposes only. Floorplans are not to scale and all measurements are approximate.