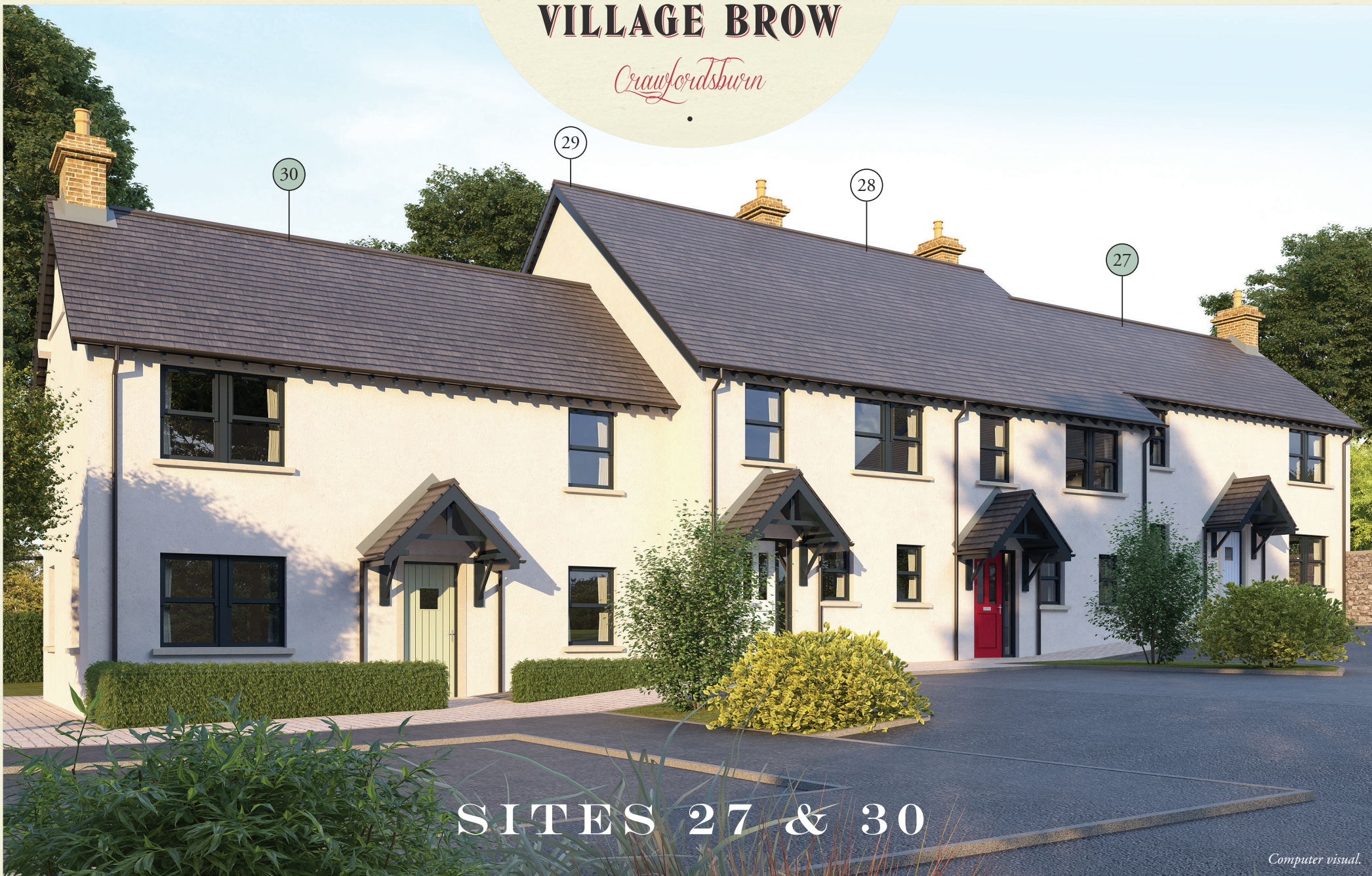


CRAWFORDSBURN VILLAGE BROW

Crawfordsburn



SITES 27 & 30

Computer visual.

SITES 27 & 30

GROUND FLOOR

Entrance Hall with separate WC

Lounge 17'9" x 10'10"

Kitchen / Dining 17'9" x 9'10" min

Utility Room 7'3" x 6'7"

FIRST FLOOR

Master Bedroom 12'6" x 9'10"

Ensuite 9'10" x 4'11"

Bedroom 2 10'10" x 9'10"

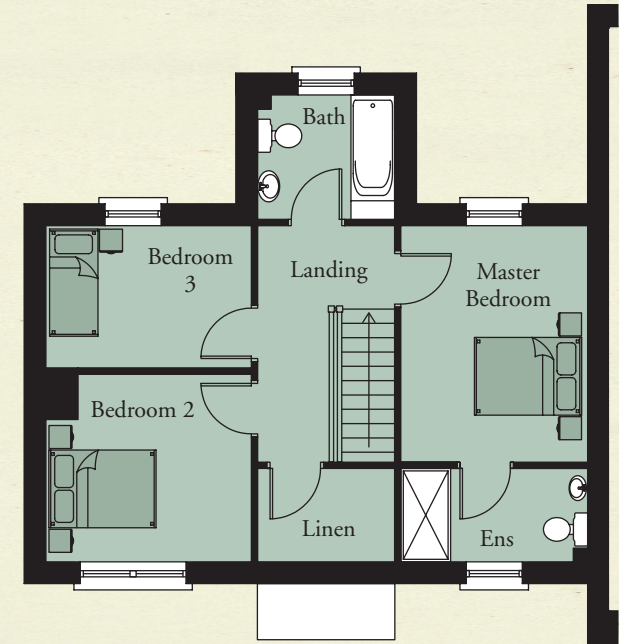
Bedroom 3 10'10" x 7'7"

Bathroom 7'3" x 6'7"

Linen 7'3" x 4'11"



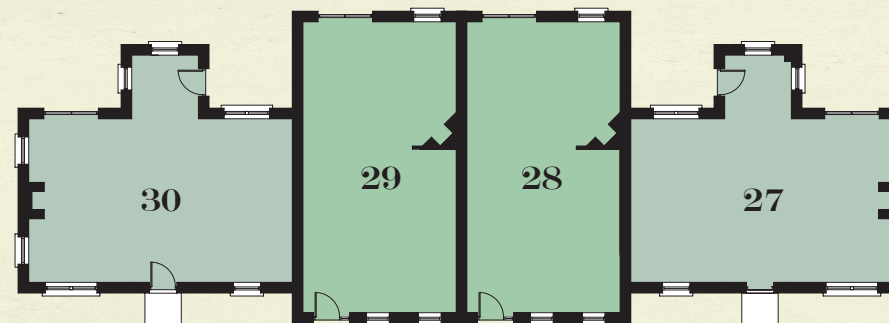
GROUND FLOOR



FIRST FLOOR

TOTAL FLOOR AREA:
1172 SQ. FT. APPROX.

KEY - SITES 30-27



**CRAWFORDSBURN
VILLAGE BROW**

TEMPLETON
ROBINSON

NORTH DOWN

54 High Street
Holywood
Co Down
BT18 9AE

028 9042 4747

WWW.TEMPLETONROBINSON.COM

CGI computer visual is for illustrative purposes only. Floorplans are not to scale and all measurements are approximate.