

CRAWFORDSBURN VILLAGE BROW

Crawfordsburn



SITES 11-15

Computer visual.

SITES 11-15

GROUND FLOOR

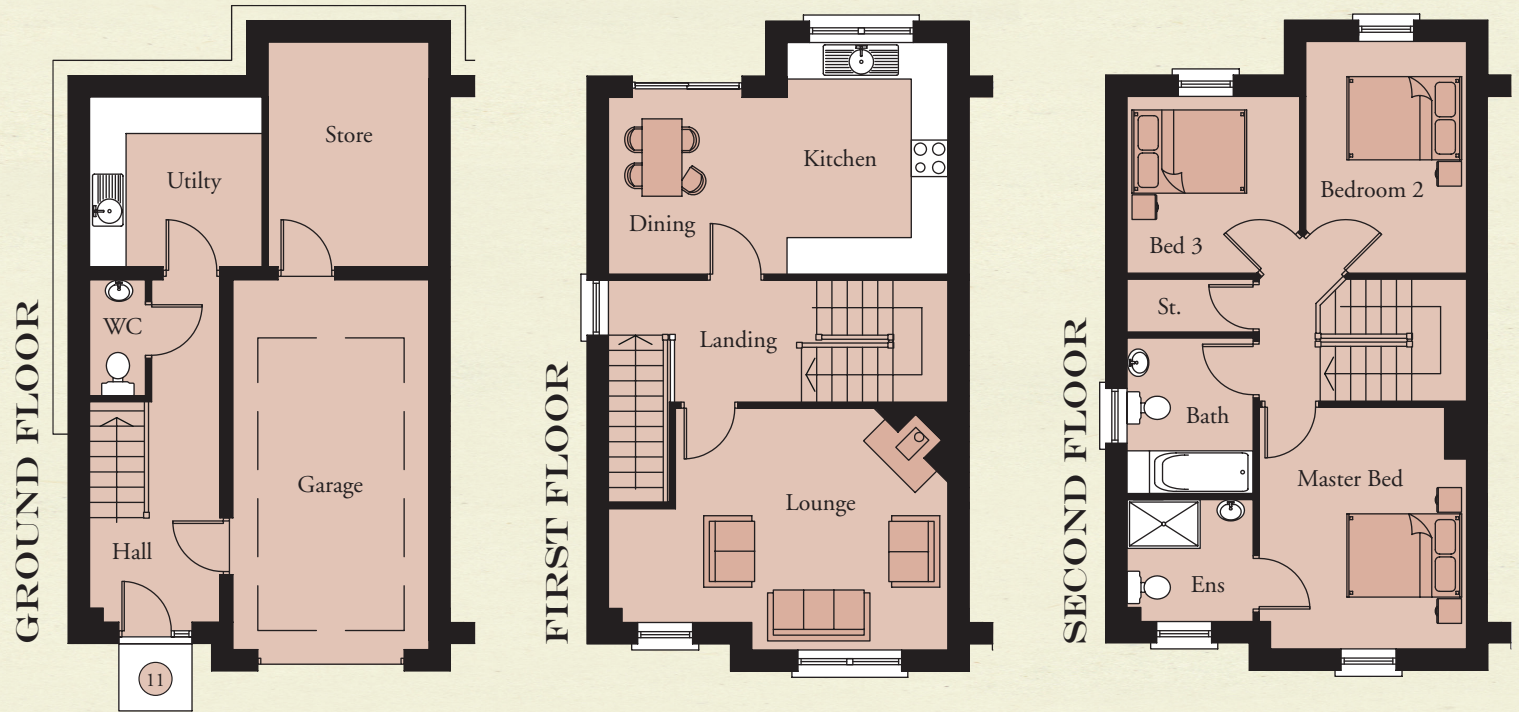
Entrance Hall with separate WC	
Garage	19'11" x 10'7"
Utility	9'3" x 9'2"
Store	12'1" x 8'8"

FIRST FLOOR

Lounge	18'3" x 13'0" max
Kitchen / Dining	18'3" x 12'6" max

SECOND FLOOR

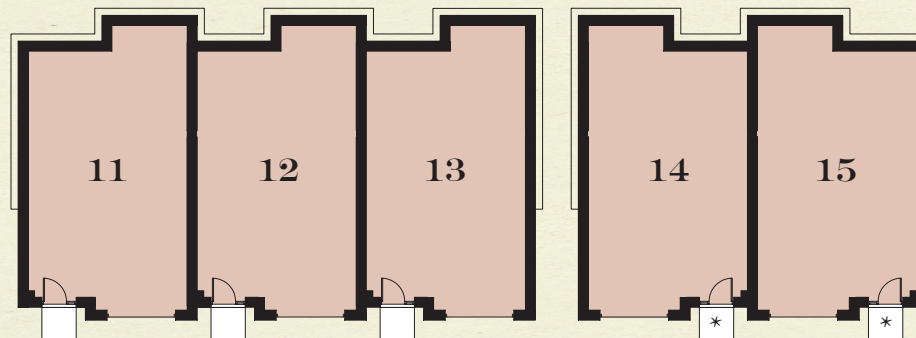
Master Bedroom	13'0" x 11'2"
Ensuite	6'9" x 6'7"
Bedroom 2	12'6" x 8'8" max
Bedroom 3	9'6" x 9'3" max
Bathroom	8'4" x 6'9"



**TOTAL FLOOR AREA:
1634 SQ. FT. APPROX.**

**Note sites 14 & 15 are a handed version of the floor plans shown*

KEY - SITES 11-15



**CRAWFORDSBURN
VILLAGE BROW**

**TEMPLETON
ROBINSON**

NORTH DOWN
54 High Street
Holywood
Co Down
BT18 9AE

028 9042 4747

WWW.TEMPLETONROBINSON.COM

CGI computer visual is for illustrative purposes only. Floorplans are not to scale and all measurements are approximate.