

CRAWFORDSBURN VILLAGE BROW

Crawfordsburn



SITE 16

Computer visual.

SITE 16

GROUND FLOOR

Entrance Hall with separate WC

Living / Dining 25'10" x 15'1"

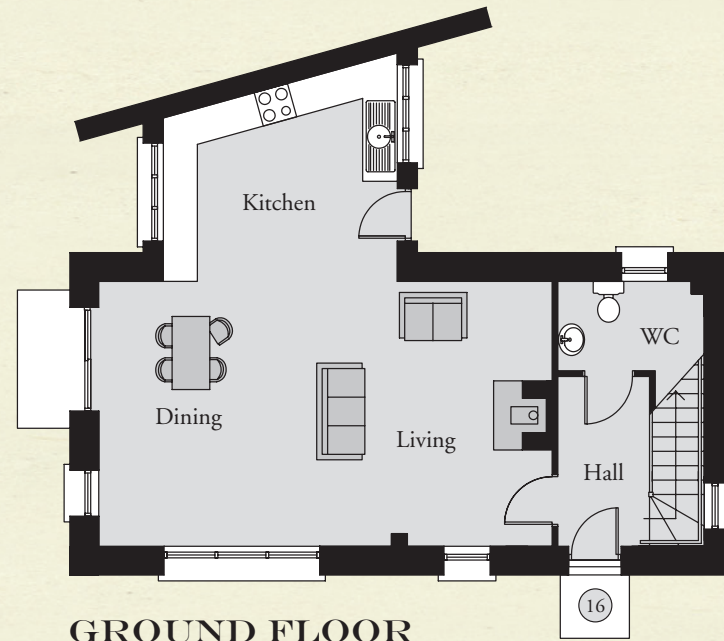
Kitchen 13'4" x 9'0" min

FIRST FLOOR

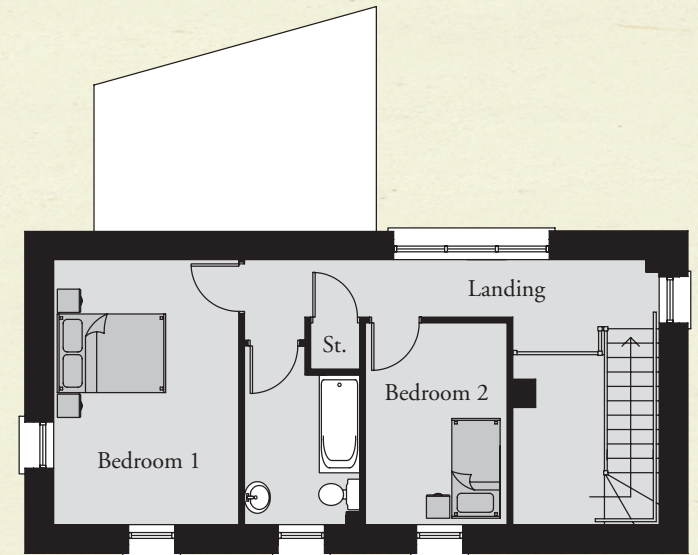
Bedroom 1 15'1" x 10'6"

Bedroom 2 10'6" x 8'1"

Bathroom 10'2" x 6'7" max



GROUND FLOOR



FIRST FLOOR

TOTAL FLOOR AREA:
1188 SQ. FT. APPROX.

TEMPLETON
ROBINSON

NORTH DOWN

54 High Street
Holywood
Co Down
BT18 9AE

028 9042 4747

WWW.TEMPLETONROBINSON.COM

CGI computer visual is for illustrative purposes only. Floorplans are not to scale and all measurements are approximate.



CRAWFORDSBURN
VILLAGE BROW