

# CRAWFORDSBURN VILLAGE BROW

*Crawfordsburn*



SITE 26

*Computer visual.*



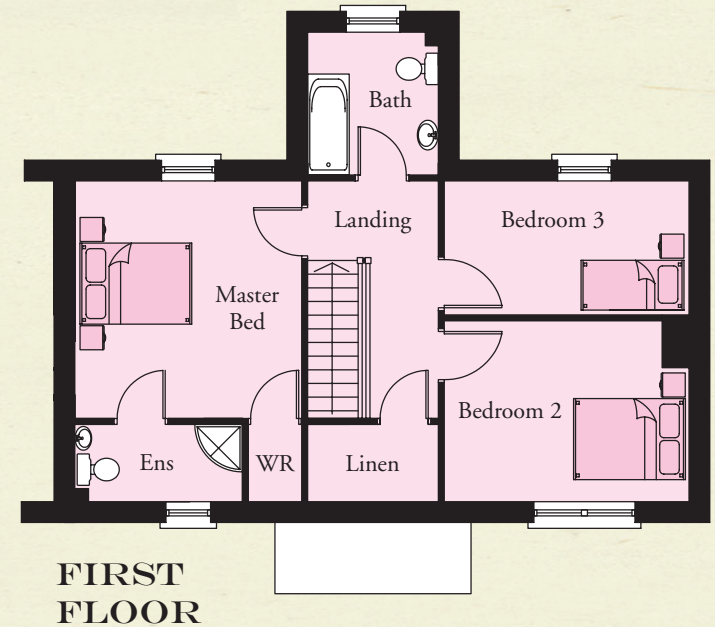
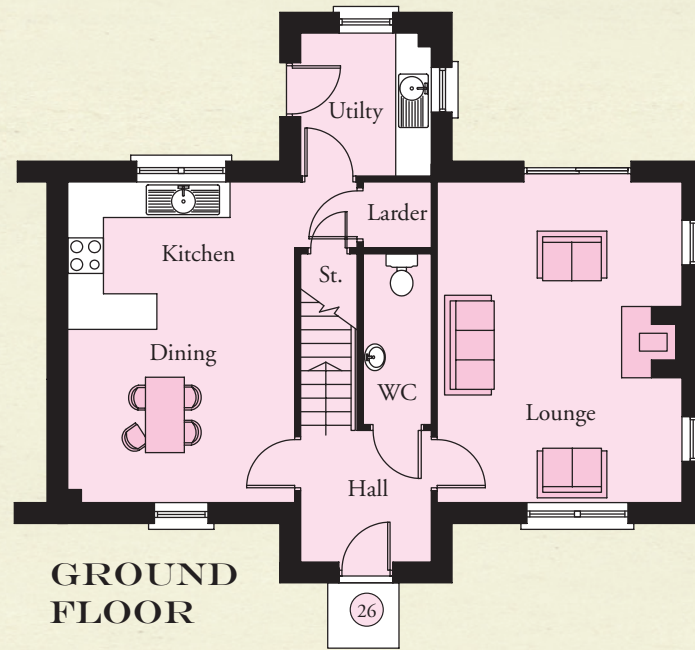
# SITE 26

## GROUND FLOOR

Entrance Hall with separate WC	
Lounge	17'9" x 13'6"
Kitchen / Dining	17'9" x 12'6"
Utility	7'11" x 7'3"

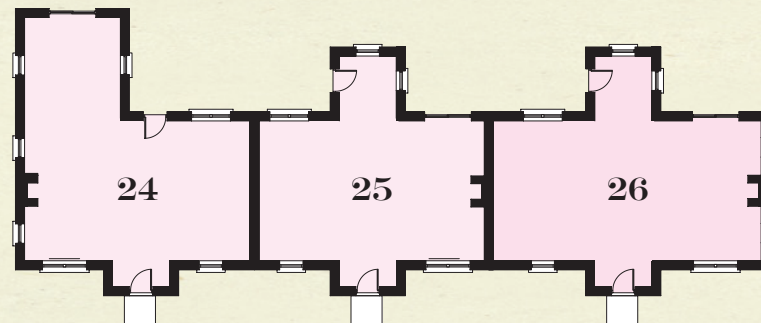
## FIRST FLOOR

Master Bedroom	13'1" x 12'6"
Ensuite	9'3" x 4'3"
Bedroom 2	13'6" x 10'0"
Bedroom 3	13'6" x 7'5"
Bathroom	7'11" x 7'3"
Linen	7'3" x 4'3"



TOTAL FLOOR AREA:  
1350 SQ. FT. APPROX.

## KEY - SITES 24, 25 & 26



**CRAWFORDSBURN  
VILLAGE BROW**

TEMPLETON  
ROBINSON

NORTH DOWN  
54 High Street  
Holywood  
Co Down  
BT18 9AE

028 9042 4747

WWW.TEMPLETONROBINSON.COM

CGI computer visual is for illustrative purposes only. Floorplans are not to scale and all measurements are approximate.