

CRAWFORDSBURN VILLAGE BROW

Crawfordsburn



SITE 25

Computer visual.

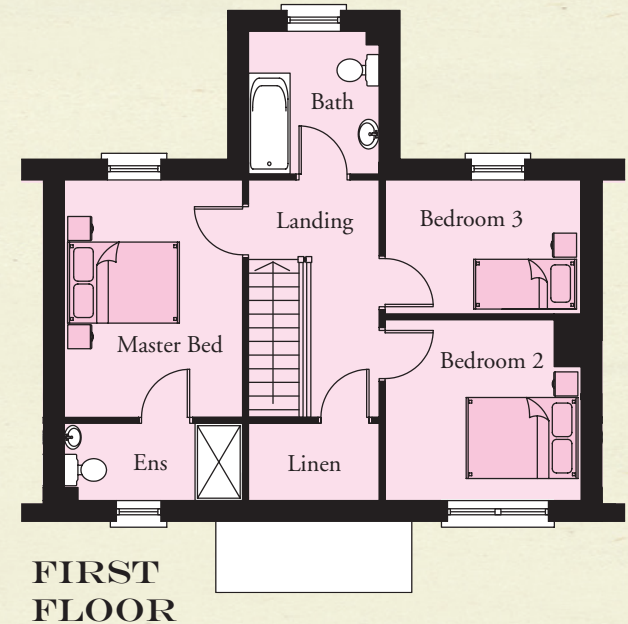
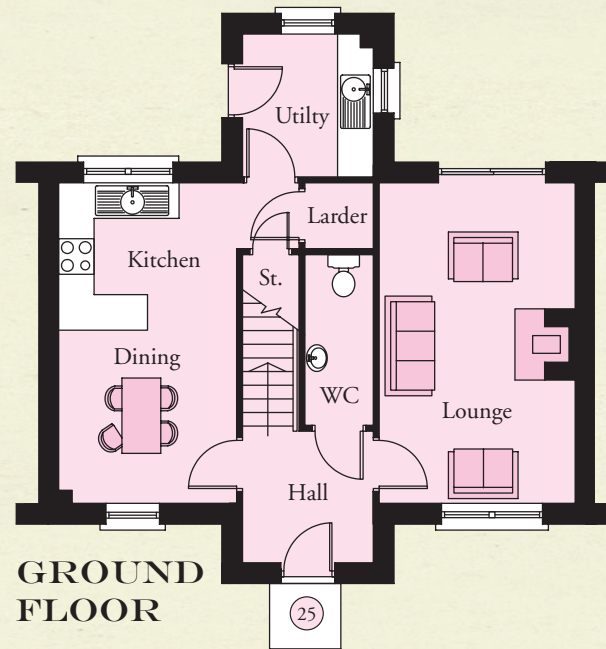
SITE 25

GROUND FLOOR

Entrance Hall with separate WC	
Lounge	17'9" x 10'10"
Kitchen / Dining	17'9" x 9'10"
Utility	7'3" x 6'9"

FIRST FLOOR

Master Bedroom	13'1" x 9'10"
Ensuite	9'10" x 4'3"
Bedroom 2	10'10" x 10'0"
Bedroom 3	10'10" x 7'5"
Bathroom	7'3" x 6'9"
Linen	7'3" x 4'3"

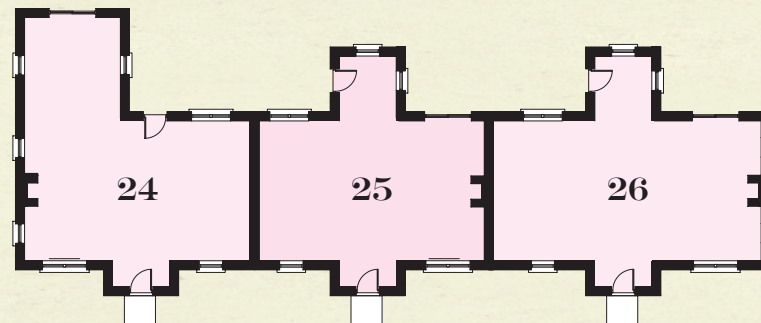


**GROUND
FLOOR**

**FIRST
FLOOR**

**TOTAL FLOOR AREA:
1150 SQ. FT. APPROX.**

KEY - SITES 24, 25 & 26



**CRAWFORDSBURN
VILLAGE BROW**

**TEMPLETON
ROBINSON**

NORTH DOWN
54 High Street
Holywood
Co Down
BT18 9AE

028 9042 4747
WWW.TEMPLETONROBINSON.COM

CGI computer visual is for illustrative purposes only. Floorplans are not to scale and all measurements are approximate.